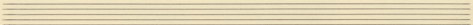
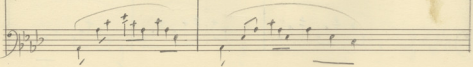
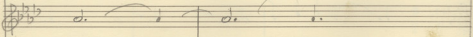
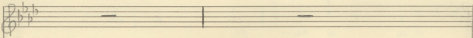
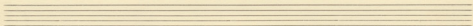
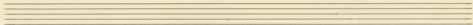
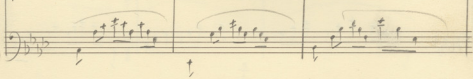
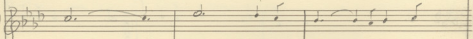
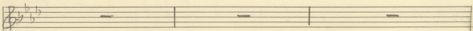
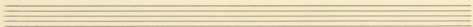


Handwritten musical notation for the first system. It consists of three staves. The top staff is a treble clef with a key signature of three sharps (F#, C#, G#) and a common time signature (C). It contains a whole rest. The middle staff is a treble clef with the same key signature and time signature, followed by a double bar line and the handwritten text "« ENOZATE »". The bottom staff is a bass clef with the same key signature and time signature, followed by a double bar line.

Handwritten musical notation for the second system. It consists of three staves. The top staff is a treble clef with a key signature of three flats (Bb, Eb, Ab) and a common time signature (C). It contains a whole rest. The middle staff is a treble clef with the same key signature and time signature, followed by the text "2. or". The bottom staff is a bass clef with the same key signature and time signature, followed by a whole rest.

Handwritten musical notation for the third system. It consists of three staves. The top staff is a treble clef with a key signature of three flats (Bb, Eb, Ab) and a common time signature (C). It contains a circled symbol that looks like a stylized 'S' or '8'. The middle staff is a treble clef with the same key signature and time signature, followed by a circled symbol that looks like a stylized 'S' or '8'. It contains a melodic line with notes and rests. The bottom staff is a bass clef with the same key signature and time signature, followed by a circled symbol that looks like a stylized 'S' or '8'. It contains a bass line with notes and rests. There are some handwritten markings below the bass staff, including a vertical line and a small 't'.



II Ο ΧΡΗΣΜΟΣ

Na 03 pas fo du ue xpa 0 epas zai da lya
 Na 10 24 kai pu sou ero gi ero pai po
 Ti ai ps zi NUX za o xa pas Man zo yu

sa w xe - pi
 zai zo zo - sou
 po Ma kai - pia

Handwritten musical score for the first system. The top staff is a vocal line in G major (one sharp) and 4/4 time, with lyrics in Greek. The bottom staff is a piano accompaniment line in G major, featuring a rhythmic pattern of eighth notes and quarter notes.

Lyrics:
 κι'θ' σου ζωο Κερ πογγ' αμ' δε φ'ος
 πα'ρ' πο' ραι' υλ'ρ' αν' σο' θ'ου' γι'
 (φ'ε'ν) τι' υ'ος' η' ζαρ' ο' Χ'ρ'ισ'τος' φ'ος'

Handwritten musical score for the second system. The top staff is a vocal line in G major and 4/4 time, with lyrics in Greek. The bottom staff is a piano accompaniment line in G major, continuing the rhythmic pattern from the first system.

Lyrics:
 φ'ω'ς' σου' δε' υ'ι'ε' η'ς' νε' υ'αν'
 κ'αι' υ'ο'υ' αυ'τ'ου' η'ν' η'ν' ε'κ' ε'κ'
 τ'ου' πα'τρ'ος' ο'υ'κ' ε'γεν'η' εν' ο'υ'κ' ο'υ'κ' ε'κ' ε'κ'

Handwritten musical notation in G major (one sharp) and 4/4 time. The melody is written in a treble clef. The lyrics are written below the notes.

Handwritten lyrics:
pés
j'ai
pés

Handwritten lyrics:
c'est
sa
pe

Handwritten lyrics:
un
sa
un

Handwritten lyrics:
et
un
un

Handwritten lyrics:
na
re
un

Handwritten lyrics:
- so
- et
- pi

Handwritten musical notation in G major (one sharp) and 4/4 time. The melody is written in a treble clef. The bass line is written in a bass clef. The lyrics are written below the notes.

Handwritten lyrics:
na
re
un

Handwritten musical notation in G major (one sharp) and 4/4 time. The melody is written in a treble clef. The lyrics are written below the notes.

Handwritten lyrics:
un
na
c'est

Handwritten lyrics:
P'
pea

Handwritten lyrics:
sou
na

Handwritten musical notation in G major (one sharp) and 4/4 time. The melody is written in a treble clef. The bass line is written in a bass clef. The lyrics are written below the notes.

Handwritten lyrics:
na
re
un