

2) ΑΙ ΕΥΧΑΙ

ΑΝΔΡΕΑΣ ΚΑΡΒΟΣ

Κυβερνήσι Ἁγῶν = Μορσά //

①

Ἔνις βα γῆς οὐς κα γῆ ζε πα γου σου

κί να ζά κί πα ζα ve ὄνι γου ζῶν ἴα κί εἰα φου

ΑΙ ΑΙΥΧΑΙ ΑΝΔΡΕΑΣ ΚΑΒΟΣ

Handwritten musical score for the first system. The vocal line is in G major (one sharp) and 2/4 time. The lyrics are: "Ω βάρ α δέσσι σπι μου 'ε - πν πορ Βα -". The piano accompaniment consists of two staves: the right hand plays chords and the left hand plays a bass line with chords.

Two empty musical staves, one for the vocal line and one for the piano accompaniment.

Handwritten musical score for the second system. The vocal line starts with a whole rest followed by the lyrics: "φuar Ιησ' Ιησ' φάρ σιό' πο' σι' α". A circled number "2" is written above the first measure of the vocal line. The piano accompaniment continues with chords in the right hand and a bass line in the left hand.

Handwritten musical score for the third system. The vocal line has a whole rest followed by a circled number "2" above the first measure. The piano accompaniment continues with chords in the right hand and a bass line in the left hand.

Handwritten musical notation for the first system. The vocal line is in treble clef with a key signature of one flat and a 4/4 time signature. The lyrics are: "Ka - ja zis pa pi-av (pa) -". The piano accompaniment is in bass clef, featuring a steady eighth-note bass line.

Handwritten musical notation for the second system, continuing the vocal and piano parts from the first system. The vocal line continues with the lyrics: "na i du iia noi Xu f's noi Tpi ju car di -- gus". The piano accompaniment continues with the same eighth-note bass line.

Two empty musical staves, one in treble clef and one in bass clef, positioned between the second and third systems of notation.

Handwritten musical notation for the third system. The vocal line is in treble clef with a key signature of one flat and a 4/4 time signature. The lyrics are: "ya na i du iia noi Xu f's noi Tpi ju car di -- gus". The piano accompaniment is in bass clef, featuring a steady eighth-note bass line.

Handwritten musical notation for the fourth system, continuing the vocal and piano parts from the third system. The vocal line continues with the lyrics: "na i du iia noi Xu f's noi Tpi ju car di -- gus". The piano accompaniment continues with the same eighth-note bass line.

Two empty musical staves, one in treble clef and one in bass clef, positioned at the bottom of the page.



Handwritten musical score for the first system. The top staff is a vocal line in G major (one flat) and 3/4 time. The lyrics are: "ve vá zft xw si zov ko's pov fi è ja újw fi - - ruw". The piano accompaniment consists of two staves: the right hand plays chords and the left hand plays a bass line with some chords. The system ends with a double bar line.

Two empty musical staves, one for the vocal line and one for the piano accompaniment, indicating the start of the second system.

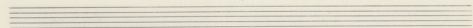
Handwritten musical score for the second system. The top staff continues the vocal line with the lyrics: "xú pa ψw - po jm zov - zes.". The piano accompaniment continues with chords and a bass line. The system ends with a double bar line.

(4)

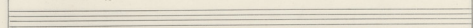
To - σι φος επι στα ρς εδ ην ves τα ο πα ρ

(4)

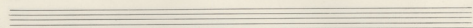
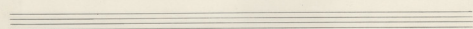
α σα ση εν ω σα ρς δουλευσαι ου πα νους ηπο ρα νει ο δε



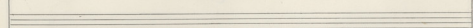
Handwritten musical notation on a single staff. The key signature has one flat (Bb) and the time signature is 3/4. The lyrics are: "os ho - vos eds a - vai Klov -".



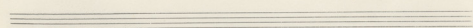
Handwritten musical notation on a grand staff (treble and bass clefs). The treble clef part contains notes and rests. The bass clef part contains a series of rests, each marked with a double slash (//).



Handwritten musical notation on a single staff. It starts with a circled number (5) above the staff. The key signature has one flat (Bb) and the time signature is 3/4. The lyrics are: "v de os vai röp fa za pa".



Handwritten musical notation on a grand staff. It starts with a circled number (5) above the staff. The treble clef part contains notes and rests. The bass clef part contains notes and rests.



Handwritten musical score for the first system. The top staff is a vocal line in G-clef with lyrics in Greek: *ἰαί ψω βί κα ἰαί 25 πα*. The bottom two staves are piano accompaniment. The first measure of the piano part contains a double bar line with a repeat sign. The second measure contains a double bar line with a repeat sign. The third measure contains a double bar line with a repeat sign.

Handwritten musical score for the second system. The top staff is a vocal line in G-clef with lyrics in Greek: *260ν κί θαί πω -- va τοῦ π μω*. The bottom two staves are piano accompaniment. The first measure of the piano part contains a double bar line with a repeat sign. The second measure contains a double bar line with a repeat sign. The third measure contains a double bar line with a repeat sign.



(6)

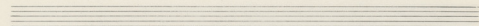
Jes tra - pä Aij ö sov Ei - van

(6)

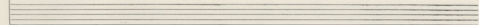
(6)

Tu - ksin uuni suynpo zä -

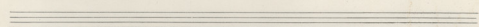
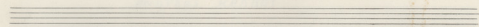
(6)



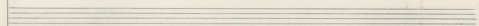
pa *f* *rit.* zu pav. vis te sou zov za Xu ze - pav a



*f*



voi pav za sou an - pi - oi du - pai



*f*

