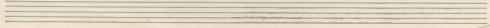
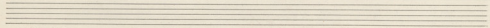
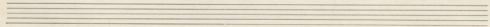
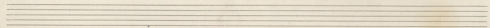
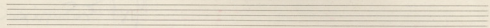
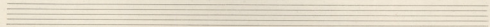
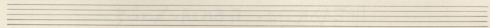
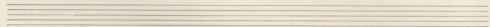
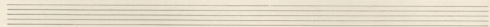
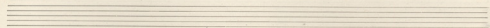
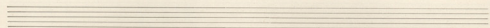
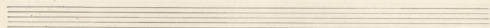


ΠΡΕΛΩΝΤΙΟ - ΠΕΝΙΑ - ΧΟΡΟΣ

- Για τέσσερα χέρια -

Μιχ. Θεοδωράκης



# ΓΕΝΙΑ

Mrs. D. K. ...

*Andino*

ΠΡΩΤΟΣ  
(Δξιόν)

ΔΕΥΤΕΡΟΣ  
(Αριστερά)

Musical notation for the first system. It features two staves. The top staff is for the first part (ΠΡΩΤΟΣ) and the bottom for the second part (ΔΕΥΤΕΡΟΣ). Both are in G major (one sharp) and common time (C). The first part begins with a double bar line and a fermata. The second part starts with a piano (*p*) dynamic and a *legato* marking. There are handwritten annotations including a blue 'S' and a red 'p'.

Musical notation for the second system. It consists of two staves. The top staff continues the melody with various rhythmic values and rests. The bottom staff provides a complex accompaniment with many sixteenth notes. A piano (*p*) dynamic is indicated. There are red wavy lines under the notes in both staves.

Musical notation for the third system. It consists of two staves. The top staff has a dense texture of chords, possibly a tremolo or a series of repeated chords. The bottom staff has a rhythmic accompaniment with many sixteenth notes. There are red wavy lines under the notes in both staves.

Musical notation for the fourth system. It consists of two staves. The top staff has a dense texture of chords. The bottom staff has a rhythmic accompaniment. The system concludes with a double bar line and the word 'Τελος' (The End) written above the staff. There are red wavy lines under the notes in both staves.

ΔΕΥΤΕΡΟΣ

Handwritten musical score for the second system. It consists of two staves, A and B. Staff A is the upper voice, and Staff B is the lower voice. The music is in a key with one sharp (F#) and a 2/4 time signature. The notation includes chords, eighth notes, and sixteenth notes. There are red annotations: a red 'p' in the first measure of Staff A, a red 'F' with a '3' above it in the third measure of Staff A, and a red 'p' in the fourth measure of Staff A. There are also red lines underlining the first and third measures of Staff A.

Handwritten musical score for the third system. It consists of two staves, A and B. Staff A is the upper voice, and Staff B is the lower voice. The music continues from the previous system. There are red annotations: a red 'F' with a '3' above it in the first measure of Staff A, a red 'pp' in the second measure of Staff A, and a red 'pp' in the third measure of Staff B. There are also red lines underlining the first and second measures of Staff A.

Handwritten musical score for the fourth system. It consists of two staves, A and B. Staff A is the upper voice, and Staff B is the lower voice. The music continues. There are red annotations: a red 'f' in the second measure of Staff A, a red 'p' in the third measure of Staff A, and a red '3' with a 'mf' above it in the third measure of Staff B. There are also red lines underlining the first and second measures of Staff A.

Handwritten musical score for the fifth system. It consists of two staves, A and B. Staff A is the upper voice, and Staff B is the lower voice. The music continues. There are red annotations: a red 'cresc' in the first measure of Staff B, a red 'dim' in the second measure of Staff B, and a red '7' above the first measure of Staff B. There are also red lines underlining the first and second measures of Staff B.

Handwritten musical score for the first system, featuring two staves labeled A and B. The music is in a key with one flat (B-flat) and a 4/4 time signature. The upper staff (A) contains complex rhythmic patterns with many beamed notes and rests. The lower staff (B) features a more melodic line with some rests. A red wavy line underlines the lower staff, with the word "cresc" written in red above it and "dim" written in red above the second measure of the lower staff. There are also some blue markings on the lower staff.

Handwritten musical score for the second system, featuring two staves labeled A and G. The music continues in the same key and time signature. The upper staff (A) has dense rhythmic passages. The lower staff (G) has a melodic line with some rests. A red wavy line underlines the lower staff, with the word "quasi" written in red below it. There are also some blue markings on the lower staff.

Handwritten musical score for the third system, featuring two staves labeled A and B. The music continues in the same key and time signature. The upper staff (A) has dense rhythmic passages. The lower staff (B) has a melodic line with some rests. A red wavy line underlines the lower staff.

*crase*

*dim*

Handwritten musical score for two staves, labeled A and B. The music is in a key with two flats (B-flat and E-flat) and a 7/8 time signature. The notation includes complex rhythmic patterns with many beamed notes and rests. A red wavy line is drawn across the bottom of the first system.

Handwritten musical score for two staves, labeled A and B. The music continues with similar complex rhythmic patterns. A red wavy line is drawn across the bottom of the second system. The notation includes dynamic markings: *F sempre* (written in red) and *pp* (written in black).

Five empty musical staves, indicating the end of the written music on this page.

Allo Mollo

A

*mp sempre crescendo*

B

*mp sempre crescendo*

Allo Mollo

F

F

F

*mp cresc*

3va Bass -

Handwritten musical score for the first system, consisting of two staves. The top staff features a treble clef and a wavy line with the marking *trb* above it. The bottom staff features a bass clef. Both staves contain complex rhythmic patterns with many beamed notes. A red *crisp* marking is present in the first measure of the top staff. A red *p* marking with a hairpin symbol is in the first measure of the bottom staff, and a red *molto* marking is in the second measure of the bottom staff.

Handwritten musical score for the second system, consisting of two staves. The top staff features a treble clef and contains several measures of music with a red *FF* marking in the first measure. The bottom staff features a bass clef and contains several measures of music with a red *FF* marking in the first measure. The notation includes various rhythmic values and some accidentals.

Handwritten musical score for the third system, consisting of two staves. The top staff features a treble clef and contains several measures of music with a red *pp* marking in the first measure and a red *mp* marking in the third measure. The bottom staff features a bass clef and contains several measures of music with a red *p* marking in the second measure and a red *mp* marking in the third measure. The notation includes various rhythmic values and some accidentals.



*molto cres - cen - do*  
*do*

*molto cres - cen - do*

**FF**

**FF**

*pp* *crescendo*

*pp* *crescendo*

Handwritten musical score system 1, consisting of three staves. The top staff features a dense texture of notes with a red 'FF' dynamic marking. The middle staff has a red 'PP' marking. The bottom staff contains a complex rhythmic pattern with a red 'FF' marking. A red scribble is present at the beginning of the system.

Handwritten musical score system 2, consisting of three staves. The top staff has a red 'PP' marking. The middle staff has a red 'PP' marking. The bottom staff has a red 'PP' marking. A red scribble is present at the end of the system.

Handwritten musical score system 3, consisting of three staves. The top staff has a red 'FF' marking. The middle staff has a red 'FF' marking. The bottom staff has a red 'FF' marking. A red scribble is present at the beginning of the system.

Meno mosso

Handwritten musical notation for the first system, measures 1-3. The top staff has a treble clef and a key signature of two sharps (F# and C#). The bottom staff has a bass clef. The music consists of eighth and sixteenth notes. Handwritten annotations in red include 'mf' and 'crescendo'.

Handwritten musical notation for the second system, measures 4-6. The top staff has a treble clef and a key signature of two sharps. The bottom staff has a bass clef. Handwritten annotations in red include 'mf'.

Handwritten musical notation for the third system, measures 7-9. The top staff has a treble clef and a key signature of two sharps. The bottom staff has a bass clef. Handwritten annotations in red include 'mf'.

Handwritten musical notation for the fourth system, measures 10-12. The top staff has a treble clef and a key signature of two sharps. The bottom staff has a bass clef. Handwritten annotations in red include 'mf'.

Handwritten musical notation for the fifth system, measures 13-15. The top staff has a treble clef and a key signature of two sharps. The bottom staff has a bass clef. Handwritten annotations in red include 'Temp. + f' and 'f'.

Handwritten musical notation for the sixth system, measures 16-18. The top staff has a treble clef and a key signature of two sharps. The bottom staff has a bass clef. Handwritten annotations in red include 'Temp. f' and 'f'.

*mp cresc - cen - do*

*mp cresc - cen - do*

*molto*

*FFF sempre*

*molto*

*FFF sempre*

Handwritten musical score for the first system. It consists of three staves. The top staff is in treble clef and contains a melodic line with triplets and slurs, marked with *pp* and *pp* in red. The middle staff is in bass clef and contains a bass line with triplets and slurs, also marked with *pp* and *pp* in red. The bottom staff is in bass clef and contains a bass line with triplets and slurs, marked with *Fpp* in red. The system concludes with a *sp* marking in red.

Handwritten musical score for the second system. It consists of three staves. The top staff is in treble clef and contains a melodic line with triplets and slurs. The middle staff is in bass clef and contains a bass line with triplets and slurs. The bottom staff is in bass clef and contains a bass line with triplets and slurs, marked with *pp* in red. The system concludes with a *pp* marking in red.

Handwritten musical score for the third system. It consists of three staves. The top staff is in treble clef and contains a melodic line with triplets and slurs, marked with *pp* in red. The middle staff is in bass clef and contains a bass line with triplets and slurs. The bottom staff is in bass clef and contains a bass line with triplets and slurs. The system concludes with a *pp* marking in red.

Handwritten musical score for the first system, consisting of two staves. The top staff begins with a treble clef and a key signature of one sharp (F#). It contains several measures of music, including a rest, followed by a series of notes with stems pointing up. A dynamic marking of *pp* is written in red ink. The bottom staff starts with a bass clef and a key signature of one sharp. It contains notes with stems pointing down, followed by a rest, and then more notes with stems pointing up. A dynamic marking of *pp* is also present in red ink.

Handwritten musical score for the second system, consisting of two staves. The top staff begins with a treble clef and a key signature of one sharp. It contains notes with stems pointing up, followed by a rest, and then more notes with stems pointing up. A dynamic marking of *pp* is written in red ink. The bottom staff starts with a bass clef and a key signature of one sharp. It contains notes with stems pointing down, followed by a rest, and then more notes with stems pointing up. Dynamic markings include *F* in red ink, followed by *pp* in red ink, and *pp pp* in red ink.

Handwritten musical score for the third system, consisting of two staves. The top staff begins with a treble clef and a key signature of one sharp. It contains notes with stems pointing up, followed by a rest, and then more notes with stems pointing up. A dynamic marking of *pp* is written in red ink. The bottom staff starts with a bass clef and a key signature of one sharp. It contains notes with stems pointing down, followed by a rest, and then more notes with stems pointing up. A dynamic marking of *pp* is written in red ink. At the bottom of the page, the word "A mio" is written vertically in red ink under each staff.

Handwritten musical score for two systems. The first system includes a treble clef staff with a *quasi* marking and a bass clef staff with a *meno* marking. Both systems feature a red *cresc.* (crescendo) hairpin leading to a red *molto* hairpin, followed by a red *FF* (fortissimo) marking. The notation includes complex rhythmic patterns and accidentals.

Handwritten musical score for two systems. The first system has a treble clef staff with a *pp* (pianissimo) marking. The second system has a bass clef staff with a *pp* marking. The notation consists of rhythmic patterns and rests.

Handwritten musical score for two systems. The first system has a treble clef staff with a *pp* marking and a red *molto* hairpin. The second system has a bass clef staff with a *pp* marking and a red *molto* hairpin. The notation includes complex rhythmic patterns and accidentals.

Handwritten musical score for the first system, consisting of two staves. The music is written in a complex, rhythmic style with many beamed notes. The dynamic marking **FF** is written in red ink on both staves. The notation includes various rhythmic values and rests.

Meno mosso

Handwritten musical score for the second system, consisting of two staves. The music is written in a complex, rhythmic style. The dynamic marking **mf** is written in red ink on the first staff, and the tempo marking Comstabile is written in red ink below the first staff. The notation includes various rhythmic values and rests.

**mf** Meno mosso

Handwritten musical score for the third system, consisting of two staves. The music is written in a complex, rhythmic style. The dynamic marking **mf** is written in red ink on the first staff, and the tempo marking Comstabile is written in red ink below the first staff. The notation includes triplets, indicated by a '3' above the notes.

Handwritten musical score for the fourth system, consisting of two staves. The music is written in a complex, rhythmic style. The notation includes various rhythmic values and rests.

Handwritten musical score for the fifth system, consisting of two staves. The music is written in a complex, rhythmic style. The notation includes various rhythmic values and rests.



Handwritten musical score for the first system, consisting of two staves. The top staff contains a melodic line with various rhythmic values and accidentals. The bottom staff provides harmonic accompaniment. A fermata is placed over a measure in the top staff, with the number '3' written above it. A circled '9' is written above the final measure of the system.

Handwritten musical score for the second system, consisting of two staves. A fermata is placed over a measure in the top staff, with the instruction 'ma x 5' written to its right. A red underline is drawn under the first two measures of the top staff, with the word 'molto' written in red below it.

Handwritten musical score for the third system, consisting of two staves. A fermata is placed over a measure in the top staff, with the instruction 'ma x 5' written to its right. A red underline is drawn under the first two measures of the top staff, with the word 'molto' written in red below it.

Coda. Poco più mosso

Handwritten musical score for the fourth system, consisting of two staves. The top staff begins with the dynamic marking 'pp' and the instruction 'cres. cen. do' written in red. The bottom staff continues the accompaniment.

Coda

Handwritten musical score for the fifth system, consisting of two staves. The top staff begins with the dynamic marking 'F' and 'pp' written in red. The bottom staff continues the accompaniment.

Handwritten musical notation for the first system, featuring a treble clef and a key signature of two flats. The notation includes a series of chords and melodic lines. Handwritten annotations in red ink include *F*, *mp*, *cres - cendo*, and *p*.

Handwritten musical notation for the second system, featuring a bass clef. The notation includes a series of chords and melodic lines. Handwritten annotations in red ink include *p*, *mp*, and *cres - cendo*.

Handwritten musical notation for the third system, featuring a treble clef. The notation includes a series of chords and melodic lines. Handwritten annotations in red ink include *molto* and *FFF sempre*.

Handwritten musical notation for the fourth system, featuring a bass clef. The notation includes a series of chords and melodic lines. Handwritten annotations in red ink include *molto* and *FFF sempre*.

Handwritten musical notation for the fifth system, featuring a treble clef. The notation includes a series of chords and melodic lines. Handwritten annotations in red ink include *pp*.

Handwritten musical notation for the sixth system, featuring a bass clef. The notation includes a series of chords and melodic lines. Handwritten annotations in red ink include *molto* and *pp*.

