

APRADIA VII

o Eritzuw

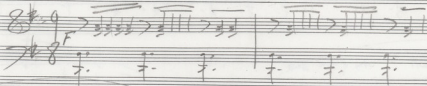
Disini:
TATAS SYRANASAS

Opus VIII No. 270

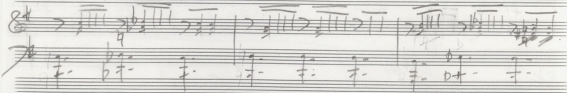
RE



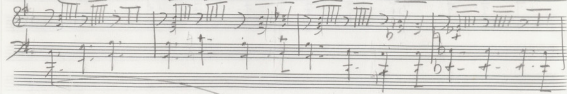
F | d. | F |
w. | | 960



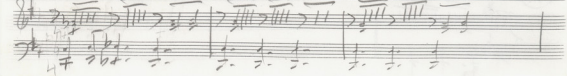
Do RE do RE Sim mba sa
- - - - w. nu a - - - ven



RE RE Das
Sim or aiaa ka pa pa - pa pa ke ya pa pa pa pa



Das RE RE RE
pa - via no u - no pa xi pa pa pa



2
>TT >TT >TT >TT >TTTT

RE RE min son A

Handwritten musical notation for the first system. It consists of a vocal line and a piano accompaniment line. The vocal line is in G major and 4/4 time, with lyrics: "Do da ya po te - - - - -". The piano accompaniment features a rhythmic pattern of eighth notes and chords. A circled 'A' is written at the end of the system.

min son LA - sin fatis sua RE Do rex Do

Handwritten musical notation for the second system. The vocal line has lyrics: "LA - sin fatis sua". The piano accompaniment continues with similar rhythmic patterns. A circled 'A' is written at the end of the system.

RE Do rex Do RE sin anba

Handwritten musical notation for the third system. The vocal line has lyrics: "Do rex Do". The piano accompaniment continues with similar rhythmic patterns.

do >>> |
son son

Handwritten musical notation for the fourth system. It shows a vocal line with lyrics "do >>> | son son" and a piano accompaniment line. A circled 'A' is written at the beginning of the system.

Sim *forte* *sim* *forte* *sim* *forte* *fin*

do - na - te pas - por - ti - o - nem no - stram tu - am

LA *mf* *forte* *for* *si* *sim*

pe - c - ca - rum no - strarum et om - nium in - i - quita - rum

for LA *for* *mf*

tu - a - rum in - ter - ce - ptis et in - ter - ce - ptis

mf *for* LA *for* LA *for* *mf*

in - ter - ce - ptis et in - ter - ce - ptis

RE RE Da RE Da RE

Handwritten musical notation for the first system. The vocal line (treble clef) has lyrics: "RE RE Da RE Da RE". The piano accompaniment (treble and bass clefs) consists of rhythmic patterns and chords.

Handwritten musical notation for the second system, showing piano accompaniment with rhythmic patterns and chords in both treble and bass clefs.

Do RE Do RE A2 sin mba sin

Handwritten musical notation for the third system. The vocal line (treble clef) has lyrics: "Do RE Do RE A2 sin mba sin". The piano accompaniment (treble and bass clefs) continues with rhythmic patterns and chords.

Handwritten musical notation for the fourth system, showing piano accompaniment with rhythmic patterns and chords in both treble and bass clefs.

pa' kama pa' em ka va di o'oi vai Xra'o

Handwritten musical notation for the fifth system. The vocal line (treble clef) has lyrics: "pa' kama pa' em ka va di o'oi vai Xra'o". The piano accompaniment (treble and bass clefs) continues with rhythmic patterns and chords.

Handwritten musical notation for the sixth system, showing piano accompaniment with rhythmic patterns and chords in both treble and bass clefs.

pa' via mo' a'o

Handwritten musical notation for the seventh system. The vocal line (treble clef) has lyrics: "pa' via mo' a'o". The piano accompaniment (treble and bass clefs) continues with rhythmic patterns and chords.

Handwritten musical notation for the eighth system, showing piano accompaniment with rhythmic patterns and chords in both treble and bass clefs.

Handwritten musical notation for the first system, featuring a treble clef, a key signature of one sharp (F#), and a 2/4 time signature. The notation includes a melody line with a circled '2' above it and a bass line with chords. There are dynamic markings such as '>' and '>>' above the notes.

Handwritten musical notation for the second system, including a treble clef, a key signature of one sharp (F#), and a 2/4 time signature. The tempo is marked 'Allegro = 54'. The melody line contains the lyrics 'Kis - - ju' and 'ra'. The bass line features chords and a bass line with notes.

Handwritten musical notation for the third system, including a treble clef, a key signature of one sharp (F#), and a 2/4 time signature. The melody line contains the lyrics 'in pa-ra-se-ni-ko-ki ju-pan-se-ko-ki ju-ko-i-ko-ki no-ki'. The bass line features chords and a bass line with notes.

Handwritten musical notation for the fourth system, including a treble clef, a key signature of one sharp (F#), and a 2/4 time signature. The melody line contains the lyrics 'ju-ko-i-ko-ki no-ki'. The bass line features chords and a bass line with notes.

Handwritten musical notation on a single staff, featuring a treble clef and a 4/4 time signature. The notes are mostly quarter notes with stems pointing upwards. Below the staff, there are handwritten lyrics: "ve ro pa ti er".

Handwritten musical notation on two staves. The top staff is a treble clef with a 4/4 time signature. The bottom staff is a bass clef with a 4/4 time signature. The music consists of chords and single notes. There are no lyrics visible for this system.

Handwritten musical notation on a single staff with a treble clef and a 6/8 time signature. The notes are mostly quarter notes. Below the staff, there are handwritten lyrics: "ra - - - - - pa ro na pa pe ve - - - - - ra".

Handwritten musical notation on two staves. The top staff is a treble clef with a 6/8 time signature. The bottom staff is a bass clef with a 6/8 time signature. The music consists of chords and single notes. There are no lyrics visible for this system.

Handwritten musical notation on a single staff with a treble clef and a 4/4 time signature. The notes are mostly quarter notes. Below the staff, there are handwritten lyrics: "ni - - - - - ra pa - - - - - ra".

Handwritten musical notation on two staves. The top staff is a treble clef with a 4/4 time signature. The bottom staff is a bass clef with a 4/4 time signature. The music consists of chords and single notes. There are no lyrics visible for this system.

Handwritten musical notation on a single staff with a treble clef and a 6/8 time signature. The notes are mostly quarter notes. Below the staff, there are handwritten lyrics: "A na - - - - - ra pa - - - - - ra".

Handwritten musical notation on two staves. The top staff is a treble clef with a 6/8 time signature. The bottom staff is a bass clef with a 6/8 time signature. The music consists of chords and single notes. There are no lyrics visible for this system.

Handwritten musical notation for the first system. The top staff is a vocal line in 8/4 time with lyrics: "Tā kōu tā kōu pōi - - - - - eia pōi a kōu pōi tā kōu". The bottom staff shows a piano accompaniment with chords and a bass line.

Handwritten musical notation for the second system. The top staff is a vocal line with lyrics: "pōi - - - - - eia pōi kōu pōi pōi pōi pōi - - - - - a". The bottom staff shows a piano accompaniment with chords and a bass line.

Handwritten musical notation for the third system. The top staff is a vocal line with lyrics: "kōu pōi tā kōu pōi kōu pōi e - - - - - a e - - - - - Hāp. and". The bottom staff shows a piano accompaniment with chords and a bass line.

Handwritten musical notation for the fourth system. The top staff is a vocal line with lyrics: "e - - - - - pōi pōi - - - - - tā pōi tā". The bottom staff shows a piano accompaniment with chords and a bass line.

Handwritten musical score for the first system. The top staff is a vocal line in G major, 4/4 time, with lyrics: "pt' q' or or - val - je - re - ra -", "kou - ou - e - il - fu - je - re - ra -". The bottom two staves are piano accompaniment, with the left hand playing chords and the right hand playing chords and some melodic fragments.

Handwritten musical score for the second system. The top staff is a vocal line in G major, 4/4 time, with lyrics: "h - w Xa", "no - ra - ei - je - re - ra -". The tempo is marked "Allegro moderato". The bottom two staves are piano accompaniment, with the left hand playing chords and the right hand playing chords and some melodic fragments.

Handwritten musical score for the third system. The top staff is a vocal line in G major, 4/4 time, with lyrics: "h - w Xa", "no - ra - ei - je - re - ra -". The bottom two staves are piano accompaniment, with the left hand playing chords and the right hand playing chords and some melodic fragments.

Handwritten musical score for the fourth system. The top staff is a vocal line in G major, 4/4 time, with lyrics: "w -", "re - - - - -". The tempo is marked "Tempo I". The bottom two staves are piano accompaniment, with the left hand playing chords and the right hand playing chords and some melodic fragments.

9.

Handwritten musical score for the first system. It consists of three staves: a vocal line in G major with lyrics, a piano accompaniment in treble clef, and a bass line in bass clef. The lyrics are: "Wau mau in - vac Wau mau in - vac".

Handwritten musical score for the second system. It consists of three staves: a vocal line in G major with lyrics, a piano accompaniment in treble clef, and a bass line in bass clef. The lyrics are: "miba, sim RE sim miba, sim".

Handwritten musical score for the third system. It consists of three staves: a vocal line in G major with lyrics, a piano accompaniment in treble clef, and a bass line in bass clef. The lyrics are: "sim LA PAB", "Tau tau in - a Kai va", "Tau Bau va kau".

Handwritten musical score for the fourth system. It consists of three staves: a vocal line in G major with lyrics, a piano accompaniment in treble clef, and a bass line in bass clef. The lyrics are: "sim miba, sim", "PC mu kau Xee tau an ai N ay", "or tau tau in - a".

Sim LA Sol¹⁰ FA# Sol

Kau van tu Sol van ab apa ga

Sim Sol mis. LA

Ku ya dar per van fol tang Xupis pu- vs kas

Sim mis. Sim RB

ju aw su fan w

mis. Sim RB

Sim mis. Sim RB

ju aw su fan w

mis. Sim RB

Handwritten musical score for the first system. It consists of three staves: a treble clef staff at the top, a bass clef staff in the middle, and a bass clef staff at the bottom. The key signature is one flat (B-flat). The music includes various rhythmic patterns, notes, and rests. There are some markings above the treble staff, possibly indicating phrasing or dynamics.

Do Re Do Re

Handwritten musical score for the second system. It features a vocal line on a treble clef staff and a piano accompaniment on a bass clef staff. The lyrics are written below the vocal line.

na par te ei pa ray se vai dea sa ya na pa ya

Handwritten musical score for the third system, continuing the piano accompaniment from the previous system. It features a bass clef staff with various musical notations.

Do Re Do Re

Handwritten musical score for the fourth system. It features a vocal line on a treble clef staff and a piano accompaniment on a bass clef staff. The lyrics are written below the vocal line.

va ya na pa ray sa vai dea sa ya na pa ya ei pa

Handwritten musical score for the fifth system, continuing the piano accompaniment from the previous system. It features a bass clef staff with various musical notations.

sim mima si

Handwritten musical score for the sixth system. It features a vocal line on a treble clef staff and a piano accompaniment on a bass clef staff. The lyrics are written below the vocal line.

ta ya sa va dea sa ya na pa ray va sa na

Handwritten musical score for the seventh system, continuing the piano accompaniment from the previous system. It features a bass clef staff with various musical notations.

sim fater sim fater Ser LA fater sim

HA WU Tay hi pa ri pa roo kau ote

Ser Fa Ser LA Ser

Tay Tay tis e no XES

Sin

XIV nuve Tay kai XIV

fater sim fater sim

qui Tay qoe Tay na pa su pa qru

LA Sol RB *min* *Ando Sol LA*

Handwritten musical notation for the first system. The vocal line (treble clef) contains the lyrics "LA Sol RB" and "Ando Sol LA". The piano accompaniment (bass clef) features a complex rhythmic pattern with many beamed notes. The system concludes with a double bar line.

Sol LA Sol *min* *q RB*

Handwritten musical notation for the second system. The vocal line (treble clef) contains the lyrics "Sol LA Sol" and "Ken San". The piano accompaniment (bass clef) continues with a similar rhythmic pattern. The system concludes with a double bar line.

sim *min sim* *RB*

Handwritten musical notation for the third system. The vocal line (treble clef) contains the lyrics "Kai". The piano accompaniment (bass clef) continues with a similar rhythmic pattern. The system concludes with a double bar line.

sim *min sim*

Handwritten musical notation for the fourth system. The vocal line (treble clef) contains the lyrics "an". The piano accompaniment (bass clef) continues with a similar rhythmic pattern. The system concludes with a double bar line.

15

RE Doh REB Doh REB

W an z - van W an

Doh REB Doh REB Sin mits

an a - van W an z -

Sin q RE

van W

Handwritten notes in German:

Handwritten notes in German:
 Die Armen bei der
 der Morion der Armen
 (Mit die Armen
 in der Welt der Armen)