

ΒΡΑΧΟΣ Η ΑΓΑΠΗ

The first system of the handwritten musical score consists of two staves. The top staff is in treble clef with a key signature of two sharps (F# and C#) and a 2/4 time signature. It begins with a circled '5' above the staff, followed by a double bar line. The bottom staff is in bass clef with the same key signature and time signature. It contains a series of notes and rests, with a circled '5' above the staff at the end of the first measure. A double bar line is present in the middle of the system.

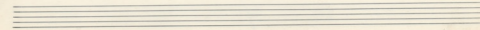
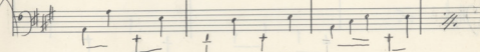
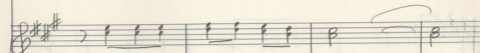
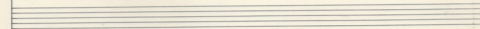
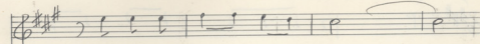
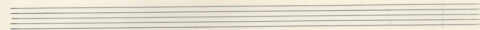
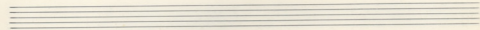
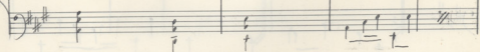
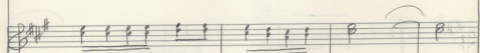
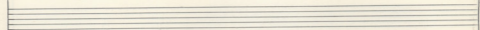
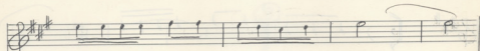
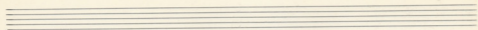
The second system of the handwritten musical score consists of two staves. The top staff is in treble clef with a key signature of two sharps (F# and C#). The bottom staff is in bass clef with the same key signature. The system contains several measures of music with notes and rests. A double bar line is present in the middle of the system.

ΒΡΑΧΟΣ Η ΑΓΑΠΗ

I VOLTA II VOLTA

I VOLTA II VOLTA





The first system of the handwritten musical score consists of two staves. The upper staff is in treble clef with a key signature of two sharps (F# and C#). It begins with a double bar line and a fermata over the first measure, followed by a series of eighth notes and a final whole note. The lower staff is in bass clef with the same key signature. It starts with a double bar line and a fermata, followed by a sequence of notes including quarter notes and eighth notes, with some notes marked with a '+' sign and a horizontal line below them. The system concludes with a double bar line and a fermata.

The second system of the handwritten musical score also consists of two staves. The upper staff is in treble clef with a key signature of two sharps. It begins with a double bar line and a fermata, followed by a series of eighth notes. The lower staff is in bass clef with the same key signature. It starts with a double bar line and a fermata, followed by a sequence of notes including quarter notes and eighth notes, with some notes marked with a '+' sign and a horizontal line below them. The system concludes with a double bar line and a fermata.

Handwritten musical score for two staves. The top staff uses a treble clef and the bottom staff uses a bass clef. Both staves are in the key of D major (two sharps). The top staff contains a single note 'd' followed by a bar line, another 'd', and a circled 'S' above a note. The bottom staff contains a sequence of notes: a quarter note 'd', a quarter note 'e', a quarter note 'f', a quarter note 'g', a bar line, a quarter note 'd', a quarter note 'e', a quarter note 'f', a quarter note 'g', a bar line, a circled 'S' above a note, a quarter note 'd', and a quarter note 'e'. There are some additional markings like a double bar line and a 't' in the bottom staff.

Seven empty musical staves, each consisting of five horizontal lines, arranged vertically on the page.

