

ELEFTERIOU MANOS
THEODORAKIS MIKIS

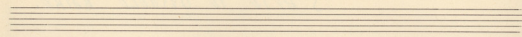
-1-

18

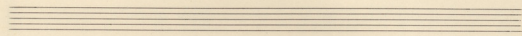
S' AFTO TO DYSKOLO KAIRO.

9

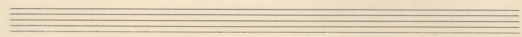
1 = 24.



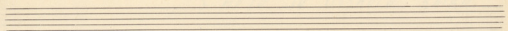
Handwritten musical score system 1. The vocal line (treble clef) contains the lyrics: "div-no-ge Kai-po' i". The piano accompaniment (grand staff) includes chords and a bass line.



Handwritten musical score system 2. The vocal line (treble clef) contains the lyrics: "ma'i-ge-tu-nu-pi-ra'i-ri-ka'". The piano accompaniment (grand staff) includes chords and a bass line.

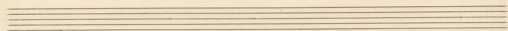


Handwritten musical score system 3. The vocal line (treble clef) contains the lyrics: "tu-pis-ua-pi-ka-pu-ya-pi". The piano accompaniment (grand staff) includes chords and a bass line.



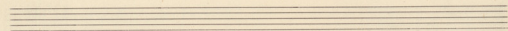
Handwritten musical notation for the first system. It consists of three staves: a vocal line in G major (one sharp) and 2/4 time, and two piano accompaniment staves. The lyrics are written below the vocal line.

και με πιη αι-ου-ωνη ανα-βαι-



Handwritten musical notation for the second system. It consists of three staves: a vocal line in G major and 2/4 time, and two piano accompaniment staves. The lyrics are written below the vocal line.

νω-πις ανα-πιη αι-ου-ωνη



Handwritten musical notation for the third system. It consists of three staves: a vocal line in G major and 2/4 time, and two piano accompaniment staves. The lyrics are written below the vocal line.

και με πιη αι-ου-ωνη ανα-βαι-

Handwritten musical score for the first system. The vocal line is in G major (one sharp) and 2/4 time. The lyrics are: *Ti'-pa-ra ep'-ous nai ste- ra' Ma'i-zar zoi*. The piano accompaniment consists of chords and moving lines in the right and left hands.

Handwritten musical score for the second system. The vocal line continues with the lyrics: *ori - - - zar ste- ra' Pa-pa-ni zo*. The piano accompaniment continues with similar harmonic support.

Handwritten musical score for the third system. The vocal line concludes with the lyrics: *gn'-pi-ze ohi ste na-nti-ns ste na-nti-ns ste na-nti-ns*. The piano accompaniment ends with a double bar line and the word **FIN** written below the staff.