

ELEFTERIOU MANDS

-1-

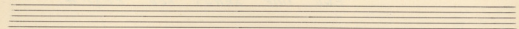
1A

THEODOBAKIS MIKIS

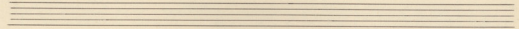
EGO IME XENOS POU PERNA.

7

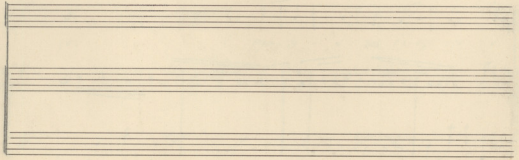
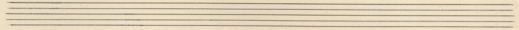
$\text{♩} = 76.78$

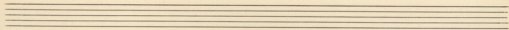


Handwritten musical score system 1. It consists of three staves: a vocal line in G major with lyrics, a piano accompaniment in G major, and a bass line. The lyrics are: "xiol-zoi xoi ps' el-na-on-ye u u xi-rov zo". The system contains six measures of music.

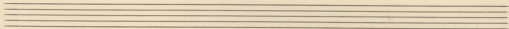


Handwritten musical score system 2. It consists of three staves: a vocal line in G major with lyrics, a piano accompaniment in G major, and a bass line. The lyrics are: "ai-pa pa-ja-ra". The system contains two measures of music, ending with a double bar line.

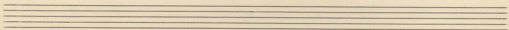




Handwritten musical score for the first system. It consists of a vocal line and a piano accompaniment. The vocal line begins with the lyrics "Ε-χὴ ἄ-". The piano accompaniment features a steady bass line and a more active treble line.



Handwritten musical score for the second system. The vocal line continues with the lyrics "μήν ἡμ-μῶν καὶ τῶν ἁγ-". The piano accompaniment continues with similar rhythmic patterns.



Handwritten musical score for the third system. The vocal line includes the lyrics "καὶ τῶν ἁγ-". The piano accompaniment concludes the system with a final chord.

Handwritten musical score for the first system. The top staff is a vocal line in G major (one sharp) with lyrics: *ni' ei-na-oms ni' ei-na-oms zo' re*. The bottom staff is a piano accompaniment with chords and some melodic lines.

Handwritten musical score for the second system. The top staff is a vocal line in G major with lyrics: *no. nae' zu' pa' ze' ros. au' asp-*. The bottom staff is a piano accompaniment with chords and some melodic lines.

Handwritten musical score for the third system. The top staff is a vocal line in G major with lyrics: *ru' rui-uis au' pi' ze' zu' ra' re.*. The bottom staff is a piano accompaniment with chords and some melodic lines.