

ELEFTERIOW MANDOS

THEODOBAKIS MIXIS

-1-

2
B 5

TO PALLIKARI ECHI KAYMO.

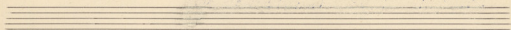
1

$\text{♩} = 96 - 100$

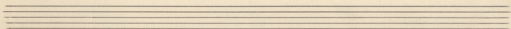
Handwritten musical score for the first system. It consists of three staves: a vocal line in G major (one sharp), a piano accompaniment in G major, and a bass line. The vocal line has lyrics: "ju - a - so - ze a -". The piano accompaniment features a melody in the right hand and a bass line in the left hand. The system concludes with a double bar line and repeat signs.

Handwritten musical score for the second system. It consists of three staves: a vocal line in G major, a piano accompaniment in G major, and a bass line. The vocal line has lyrics: "na - za - mi - za - mi - za - mi - za -". The piano accompaniment features a melody in the right hand and a bass line in the left hand. The system concludes with a double bar line and repeat signs.

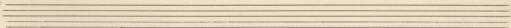
Handwritten musical score for the third system. It consists of three staves: a piano accompaniment in G major, a piano accompaniment in G major, and a bass line. The piano accompaniment features a melody in the right hand and a bass line in the left hand. The system concludes with a double bar line and repeat signs.



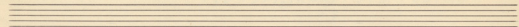
Musical notation system 1. Treble clef, key signature of two sharps (F# and C#), 4/4 time signature. The first staff contains a whole rest. The second staff contains a melodic line with eighth notes, including a triplet of eighth notes marked with a '3' above it. The third staff contains a whole rest.



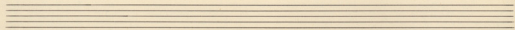
Musical notation system 2. Treble clef, key signature of two sharps (F# and C#), 4/4 time signature. The first staff contains a whole rest. The second staff contains a melodic line with eighth notes. The third staff contains a bass line with eighth notes.



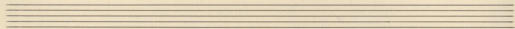
Musical notation system 3. Treble clef, key signature of two sharps (F# and C#), 4/4 time signature. The first staff contains a whole rest. The second staff contains a melodic line with eighth notes, ending with a half note chord. The third staff contains a bass line with eighth notes. The lyrics "To sug-ge-" are written below the second staff.



Handwritten musical score for the first system. It consists of three staves: a vocal line in treble clef with a key signature of one sharp (F#) and a common time signature (C), and two piano accompaniment staves in G major. The lyrics "kai - pi - zu nai - pi." are written below the vocal line. The piano accompaniment features a rhythmic pattern of eighth notes in the left hand and chords in the right hand.



Handwritten musical score for the second system. It consists of three staves: a vocal line in treble clef with a key signature of one sharp (F#) and a common time signature (C), and two piano accompaniment staves in G major. The lyrics "kai - pi - zu nai - pi." are written below the vocal line. The piano accompaniment continues with similar rhythmic patterns.



Handwritten musical score for the third system. It consists of three staves: a vocal line in treble clef with a key signature of one sharp (F#) and a common time signature (C), and two piano accompaniment staves in G major. The lyrics "kai ro nai - zu nai ovi pi -" are written below the vocal line. The piano accompaniment concludes with a final chord.

ELEFTERIOU MANDOS

THEODORAKIS MIXIS

-1-

4

MIA NYCHTERIDA STI SKEPI

2

Handwritten musical notation for the first system. The top staff is labeled "Recitativo" and contains a vocal line with a sixteenth-note triplet marked with a "6". The bottom staff shows piano accompaniment with chords and a few notes.

Handwritten musical notation for the second system. The top staff continues the vocal line with a sixteenth-note triplet marked with a "6". The bottom staff continues the piano accompaniment with chords and a fermata over a note.

Handwritten musical notation for the third system. It begins with a tempo marking "♩ = 48-50" and a 9/4 time signature. The top staff contains a vocal line with quarter notes. The bottom staff contains piano accompaniment with quarter notes and a double bar line.

Handwritten musical score for the first system. It consists of three staves: a vocal line (treble clef), a piano accompaniment line (treble clef), and a bass line (bass clef). The key signature is two sharps (F# and C#). The lyrics are written below the vocal line.

Lyrics: *ä- ve- pos tai sef- ve kläv os- suvv kai stai kv- pa- zov*

Handwritten musical score for the second system. It consists of three staves: a vocal line (treble clef), a piano accompaniment line (treble clef), and a bass line (bass clef). The key signature is two sharps (F# and C#). The lyrics are written below the vocal line. The system concludes with a fermata over the final note of the vocal line and the word "FIN." written below the piano accompaniment line.

Lyrics: *vi- ov ja- va- tai sef- ve. —*

FIN.

Handwritten title or subtitle at the top of the page, partially obscured by the page number.

Handwritten musical notation for the first system. It consists of three staves: a treble clef staff with a key signature of one sharp (F#) and a common time signature (C), a middle treble clef staff with notes and rests, and a bass clef staff with rests. The notation is in ink and shows the beginning of a piece.

Empty musical staff lines.

Handwritten musical notation for the second system. It consists of three staves: a treble clef staff with a key signature of one sharp (F#) and a common time signature (C), a middle treble clef staff with notes and rests, and a bass clef staff with rests. The notation continues from the first system.

Empty musical staff lines.

Handwritten musical notation for the third system. It consists of three staves: a treble clef staff with a key signature of one sharp (F#) and a common time signature (C), a middle treble clef staff with notes and rests, and a bass clef staff with notes and rests. The notation concludes with a double bar line and repeat dots.

Handwritten musical score for the first system. It consists of three staves: a vocal line in G major (one sharp) and 3/4 time, and a piano accompaniment in G major. The lyrics are: "ous a - pa - je ou rō rō nō rā". The music includes a key signature change from G major to D major (two sharps) in the second measure of the piano part.

Handwritten musical score for the second system. It consists of three staves: a vocal line in G major (one sharp) and 3/4 time, and a piano accompaniment in G major. The lyrics are: "pa - òs rōr nōi -". The music includes a key signature change from G major to D major (two sharps) in the second measure of the piano part.

Handwritten musical score for the third system. It consists of three staves: a vocal line in G major (one sharp) and 4/4 time, and a piano accompaniment in G major. The lyrics are: "pov sou rōg - rō zōu - ps - rō - pa rā nō". The word "REFRAIN" is written below the piano part. The music includes a key signature change from G major to D major (two sharps) in the second measure of the piano part.

ELEFTERIΩV ΜΑΝΩΣ
THEODORAKIS MIKIS

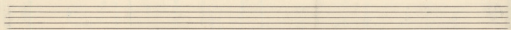
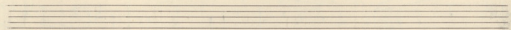
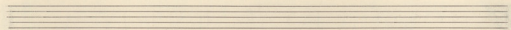
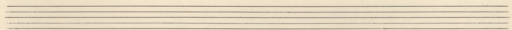
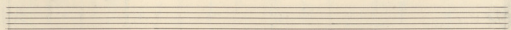
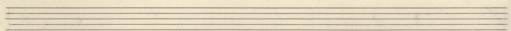
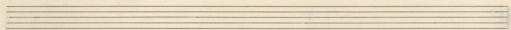
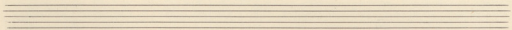
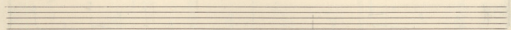
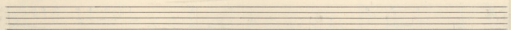
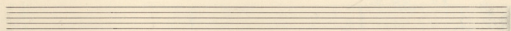
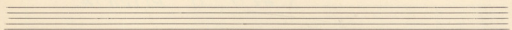
-1-

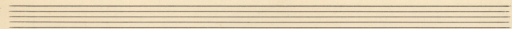
B 6⁶

ΣΑΦΤΙ ΤΙ ΕΙΤΟΝΙΑ.

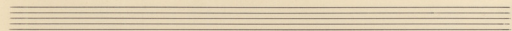
3

88-90

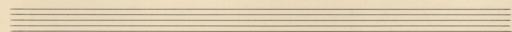




Handwritten musical score for the first system. It consists of three staves: a vocal line in G major (one sharp) and 2/4 time, and two piano accompaniment staves. The lyrics are: *Εὐ-ρί-τι-μη-το-*



Handwritten musical score for the second system. It consists of three staves: a vocal line in G major and 2/4 time, and two piano accompaniment staves. The lyrics are: *να εὐ-ρί-τι-μη-το-να εὐ-*



Handwritten musical score for the third system. It consists of three staves: a vocal line in G major and 2/4 time, and two piano accompaniment staves. The lyrics are: *ρί-τι-μη-το-να' και ἁ-γι-ὸς και ἁ-γι-*

Handwritten musical score for the first system. It consists of three staves: a vocal line in G major (one sharp) and a piano accompaniment in G major. The vocal line begins with a fermata over a dotted quarter note, followed by the lyrics "τε- πα- ρα- με και αυ- ρα- με ο-". The piano accompaniment features a simple harmonic accompaniment with chords and moving bass lines.

Handwritten musical score for the second system. The vocal line continues with the lyrics "ζου- ζυ- πε ζυ- η. τε- πα- ρα- με και". The piano accompaniment continues with similar harmonic support.

Handwritten musical score for the third system. The vocal line concludes with the lyrics "αυ- ρα- με ο- ζου- ζυ- πε ζυ- η. —". The piano accompaniment ends with a final chord. The word "FIN" is written in the bottom right corner of the system.

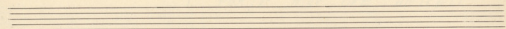
1 PORTA MOY IXE ANICHTI.

4

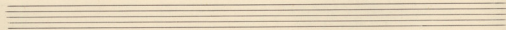
$\text{♩} = 54-56$

(5)

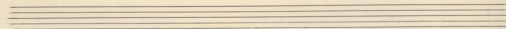
The image shows a handwritten musical score on aged paper. The score is written in a system of three staves. The top staff is a treble clef with a key signature of one sharp (F#) and a 4/4 time signature. The second and third staves are bass clefs. The music is written in a style that appears to be a piano accompaniment for a vocal line. The first system of music is marked with a circled '5' and a tempo marking of '♩ = 54-56'. Above the first system, the number '4' is written and underlined. The score consists of three systems of music, each with a treble and two bass staves. The notation includes various rhythmic values, accidentals, and phrasing slurs. The paper shows signs of age, including some staining and a slightly yellowed tone.



Handwritten musical score for the first system. It consists of three staves: a vocal line in G major (one sharp), a piano accompaniment in G major, and a bass line. The lyrics are: "spis id — kai va ps gn- ryo- m —".



Handwritten musical score for the second system. It consists of three staves: a vocal line in G major, a piano accompaniment in G major, and a bass line. The lyrics are: "ons. mo- po- ni — ons. E- gn re-".



Handwritten musical score for the third system. It consists of three staves: a vocal line in G major, a piano accompaniment in G major, and a bass line. The lyrics are: "po na va ag- ons. upel- hi- ni-".

THEODORAKIS MIKIS

KATHE PROI POU XANAKIZI

5

♩ 84-88

Handwritten musical notation for the first system. It consists of a treble clef staff and a bass clef staff. The treble staff contains a series of eighth notes, while the bass staff contains a series of chords. The key signature is one sharp (F#) and the time signature is 4/4. The tempo marking is quarter note = 84-88.

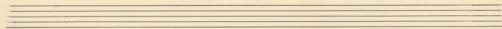
Handwritten musical notation for the second system. It consists of a treble clef staff and a bass clef staff. The treble staff contains a series of eighth notes, while the bass staff contains a series of chords. The key signature is one sharp (F#) and the time signature is 4/4.

Handwritten musical notation for the third system. It consists of a treble clef staff and a bass clef staff. The treble staff contains a series of eighth notes, while the bass staff contains a series of chords. The key signature is one sharp (F#) and the time signature is 4/4. The lyrics "Ka-de epu-i oia fa-rag" are written below the treble staff.

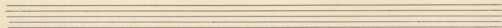
Handwritten musical score for the first system. The top staff is a vocal line in G major (one sharp) with lyrics: *xi - gu pas e - gu vai - pu vai nag - vai pas. -*. The bottom two staves are a piano accompaniment. The music is in 4/4 time and consists of three measures.

Handwritten musical score for the second system. The top staff is a vocal line with lyrics: *ois pa - pa - pas vai i - o - pi - a. Ju - pa - ve - vai vai vai -*. The bottom two staves are a piano accompaniment. The music is in 4/4 time and consists of three measures.

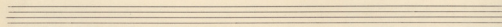
Handwritten musical score for the third system. The top staff is a vocal line with lyrics: *u pas. Ois pa - pa - pas vai i - o - pi - a,*. The bottom two staves are a piano accompaniment. The music is in 4/4 time and consists of three measures.



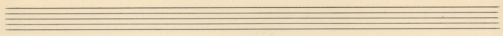
γο-ρῆ-ρα οὐδὲν ἔστιν ἔτι - αὐ - τῶν. Μὰ σὺν ἡ-μῶν γὰρ



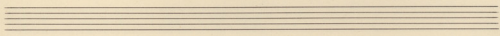
ὁ - - - γὰρ - τὰ καὶ σὺν ἡμῶν - τὰ ἐν ἡμῶν - - - γὰρ.



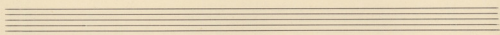
τῶν ἐν ἡμῶν - τὰ οὐδὲν ἔστιν ἔτι



Handwritten musical notation for a vocal line and piano accompaniment. The vocal line is in treble clef with a key signature of one sharp (F#) and a common time signature. The lyrics are: *naí anís dá zú - - zú spa - - - gn.* The piano accompaniment is in bass clef with the same key signature and time signature. The music consists of two measures.



Handwritten musical notation for piano accompaniment. It consists of three staves: treble clef, alto clef, and bass clef. The key signature is one sharp (F#) and the time signature is common time. The notation shows a few notes and rests, with some lines being mostly empty.



Two empty musical staves, one in treble clef and one in bass clef, with five lines each.

ZOI PIKRI

6

$\text{♩} = 54-56$

Handwritten musical score for the first system of 'Zoi Pikri'. It features a grand staff with treble and bass clefs. The key signature has one flat (B-flat). The tempo is marked as quarter note = 54-56. The music consists of a vocal line and a piano accompaniment. The piano part includes chords with a sharp sign (♯) and a plus sign (+).

Handwritten musical score for the second system of 'Zoi Pikri'. It continues the grand staff notation from the first system. The piano accompaniment features chords with a sharp sign (♯) and a plus sign (+). The system concludes with a double bar line.

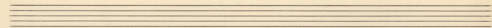
Handwritten musical score for the third system of 'Zoi Pikri'. It includes the vocal line with lyrics: "Τὸ ἐπι-τε ποὺ σὶ-ραὶ πι-". The piano accompaniment continues with chords, including one with a sharp sign (♯) and a plus sign (+). The system ends with a double bar line.

Handwritten musical notation on a page with ten staves. The first three staves contain a musical score in G major and 3/4 time. The score includes a treble clef, a key signature of one sharp (F#), and a 3/4 time signature. The first staff has a whole note G4, followed by a double bar line with a repeat sign and a second ending bracket. The second staff has a quarter note G4, a quarter note A4, and a quarter note B4, followed by a double bar line with a repeat sign and a second ending bracket. The third staff has a quarter note G4, a quarter note A4, and a quarter note B4, followed by a double bar line with a repeat sign and a second ending bracket. The remaining seven staves are empty.

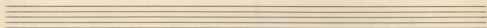
Handwritten musical score for the first system. The vocal line (treble clef) contains the lyrics: *apò noi per pa-ria-pa-ria per*. The piano accompaniment (grand staff) includes chords and a bass line.

Handwritten musical score for the second system. The vocal line (treble clef) contains the lyrics: *ois per noi de-ja-ri ri apò*. The piano accompaniment (grand staff) includes chords and a bass line.

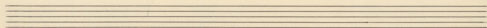
Handwritten musical score for the third system. The vocal line (treble clef) contains the lyrics: *Zu-ri pi-ri Zu-ri a-ri*. The piano accompaniment (grand staff) includes chords and a bass line.



Handwritten musical score for the first system. It consists of three staves: a vocal line in G major with a treble clef, a piano accompaniment in G major with a treble clef, and a piano accompaniment in G major with a bass clef. The lyrics are written below the vocal line: "nu-ya pi zo pa-ru - - - pi".



Handwritten musical score for the second system. It consists of three staves: a vocal line in G major with a treble clef, a piano accompaniment in G major with a treble clef, and a piano accompaniment in G major with a bass clef. The lyrics are written below the vocal line: "Phi-rua yap-pi-ru ed-ru - a".



Handwritten musical score for the third system. It consists of three staves: a vocal line in G major with a treble clef, a piano accompaniment in G major with a treble clef, and a piano accompaniment in G major with a bass clef. The lyrics are written below the vocal line: "ru-ru - ra na-jo-ru - pi -". There are first and second endings marked with 'I' and 'II' above the final notes of the vocal line.

ELEFTERIOU MANDOS

-1-

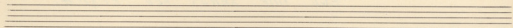
1A

THEODOBAKIS MIKIS

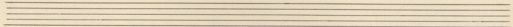
EGO IME XENOS POU PERNA.

7

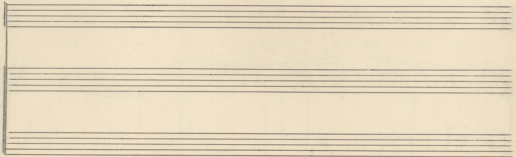
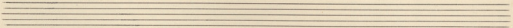
$\text{♩} = 76.78$



Handwritten musical score for the first system, featuring a vocal line with lyrics and piano accompaniment. The lyrics are: "xiol-zoi xoi ps el-na-on-ye u u xi-rov zo".



Handwritten musical score for the second system, featuring a vocal line with lyrics and piano accompaniment. The lyrics are: "ai-pa pa-ja-ra".



Handwritten musical score for the first system. The top staff is a vocal line in G major (one sharp) with lyrics: *ni' ei-na-oms ni' ei-na-oms zo' re*. The bottom staff is a piano accompaniment with chords and some melodic lines.

Handwritten musical score for the second system. The top staff is a vocal line in G major with lyrics: *no. nae' zu' pa' ze' ros. au' asp-*. The bottom staff is a piano accompaniment with chords and some melodic lines.

Handwritten musical score for the third system. The top staff is a vocal line in G major with lyrics: *ru' rui-uis au' pi' ze' zu' ra' re.*. The bottom staff is a piano accompaniment with chords and some melodic lines.

Handwritten musical score for the first system. It consists of three staves: a vocal line in G major (one sharp), a piano accompaniment in G major, and a bass line. The lyrics are written below the vocal line.

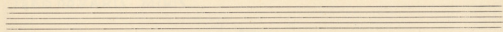
ap̄ō eo xp̄ō vo ga p̄ōpi ua ev̄ āj̄ or oia opa

Handwritten musical score for the second system. It consists of three staves: a vocal line in G major, a piano accompaniment in G major, and a bass line. The lyrics are written below the vocal line.

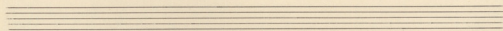
14 ā xw pis vā ōi iu

Handwritten musical score for the third system. It consists of three staves: a vocal line in G major, a piano accompaniment in G major, and a bass line. The lyrics are written below the vocal line.

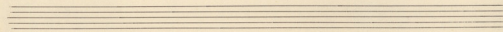
ōp̄ ī Du ua pis oia pu xa tis oia tu



Handwritten musical score for the first system. It consists of a vocal line and a piano accompaniment. The vocal line is in treble clef with a key signature of one sharp (F#) and a common time signature (C). The lyrics are: "Ka vou epi - a Ma' zo yw". The piano accompaniment is in bass clef with a key signature of one sharp (F#). The system concludes with a double bar line and repeat dots.



Handwritten musical score for the second system. It consists of a vocal line and a piano accompaniment. The vocal line is in treble clef with a key signature of one sharp (F#) and a common time signature (C). The lyrics are: "ki pou a vai yw co". The piano accompaniment is in bass clef with a key signature of one sharp (F#). The system concludes with a double bar line and repeat dots.



Handwritten musical score for the third system. It consists of a vocal line and a piano accompaniment. The vocal line is in treble clef with a key signature of one sharp (F#) and a common time signature (C). The lyrics are: "Kai zo upa si ya zi". The piano accompaniment is in bass clef with a key signature of one sharp (F#). The system concludes with a double bar line and repeat dots.

Handwritten musical score for the first system. The top staff is a vocal line in G major (one sharp) and 4/4 time, with lyrics: "yu zú pa wou è wu pa wou è pa da wu". The bottom two staves are piano accompaniment, with the left hand playing a simple bass line and the right hand playing chords.

Handwritten musical score for the second system. The top staff is a vocal line in G major and 4/4 time, with lyrics: "yu ... i pò da wán i pò da". The bottom two staves are piano accompaniment, continuing the harmonic support for the vocal line.

Handwritten musical score for the third system. The top staff is a vocal line in G major and 4/4 time, with lyrics: "wán yu pi yu". The bottom two staves are piano accompaniment, concluding the piece with a final cadence.

ELEFTERIOU MANOS
THEODORAKIS MIKIS

-1-

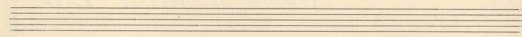
18

S' AFTO TO DYSKOLO KAIRO.

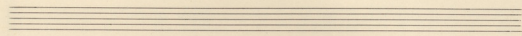
9

1 = 84.

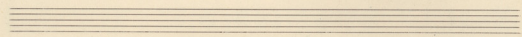
Επι-τί τί



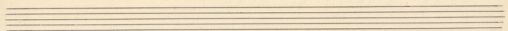
Handwritten musical notation for the first system. It consists of three staves: a vocal line in G major with lyrics "div-no-ge nos-po' w", and two piano accompaniment staves. The piano part features a bass line with eighth notes and chords in the right hand.



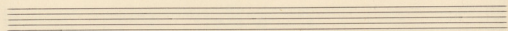
Handwritten musical notation for the second system. It consists of three staves: a vocal line in G major with lyrics "moy-ty-za nos-pis ra' os' sp", and two piano accompaniment staves. The piano part continues with similar rhythmic patterns and chordal accompaniment.



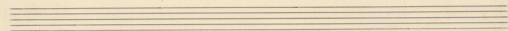
Handwritten musical notation for the third system. It consists of three staves: a vocal line in G major with lyrics "zr-pis nos-pis da-pn-ya - pia'", and two piano accompaniment staves. The piano part concludes with sustained chords in the right hand and a final bass line.



Handwritten musical notation for the first system. It consists of three staves: a vocal line in G major (one sharp) and 2/4 time, and a piano accompaniment. The lyrics are written below the vocal line: *καὶ πάλιν ἀπο-στειλάμεθα*



Handwritten musical notation for the second system. It consists of three staves: a vocal line in G major (one sharp) and 2/4 time, and a piano accompaniment. The lyrics are written below the vocal line: *καὶ πάλιν ἀπο-στειλάμεθα*



Handwritten musical notation for the third system. It consists of three staves: a vocal line in G major (one sharp) and 2/4 time, and a piano accompaniment. The lyrics are written below the vocal line: *καὶ πάλιν ἀπο-στειλάμεθα*

THEODORAKIS MIKIS

TO TRAINO FEFGI STIS OKTO.

10

p = 58-60

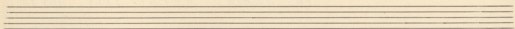
To' zmi-ra pu' - pu' o'is ex-

mf

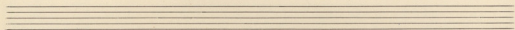
ra-fi' - di pu' tal' ha-te-

mf

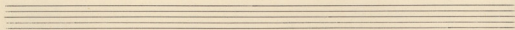
no - spu - lous pu' - ras e'iv dei pu' - ri.



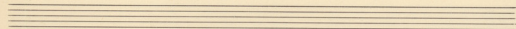
Handwritten musical notation for the first system. It consists of three staves. The top staff is a treble clef with a key signature of one sharp (F#) and contains two measures of whole rests. The middle staff is a treble clef with a key signature of one sharp (F#) and contains two measures of music. The first measure has a quarter note G4, an eighth note A4, a quarter note B4, and a quarter note C5. The second measure has a quarter note D5, an eighth note E5, a quarter note F#5, and a quarter note G5. A circled '8' is written to the right of the second measure. The bottom staff is a bass clef with a key signature of one sharp (F#) and contains two measures of music. The first measure has a quarter note G2, an eighth note A2, a quarter note B2, and a quarter note C3. The second measure has a quarter note D3, an eighth note E3, a quarter note F#3, and a quarter note G3. A circled '8' is written to the right of the second measure.



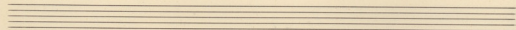
Handwritten musical notation for the second system. It consists of three staves. The top staff is a treble clef with a key signature of one sharp (F#) and contains two measures of whole rests. The middle staff is a treble clef with a key signature of one sharp (F#) and contains two measures of music. The first measure has a quarter note G4, an eighth note A4, a quarter note B4, and a quarter note C5. The second measure has a quarter note D5, an eighth note E5, a quarter note F#5, and a quarter note G5. A circled '8' is written to the right of the second measure. The bottom staff is a bass clef with a key signature of one sharp (F#) and contains two measures of music. The first measure has a quarter note G2, an eighth note A2, a quarter note B2, and a quarter note C3. The second measure has a quarter note D3, an eighth note E3, a quarter note F#3, and a quarter note G3. A circled '8' is written to the right of the second measure.



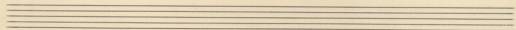
Handwritten musical notation for the third system. It consists of three staves. The top staff is a treble clef with a key signature of one sharp (F#) and contains two measures of whole rests. The middle staff is a treble clef with a key signature of one sharp (F#) and contains two measures of music. The first measure has a quarter note G4, an eighth note A4, a quarter note B4, and a quarter note C5. The second measure has a quarter note D5, an eighth note E5, a quarter note F#5, and a quarter note G5. A circled '8' is written to the right of the second measure. The bottom staff is a bass clef with a key signature of one sharp (F#) and contains two measures of music. The first measure has a quarter note G2, an eighth note A2, a quarter note B2, and a quarter note C3. The second measure has a quarter note D3, an eighth note E3, a quarter note F#3, and a quarter note G3. A circled '8' is written to the right of the second measure.



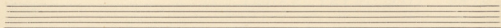
in pi du-pa-ae rai-oi- zo'



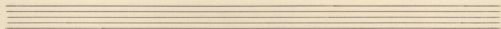
in pi du-pa-ae rai-oi- zo'



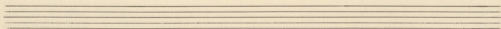
zo' ipai-ro yui rai-ka-ze-pi-rn



Handwritten musical score for the first system. It consists of three staves: a vocal line in G major (one sharp), a piano accompaniment in G major, and a bass line in G major. The lyrics are: "No - spus pi - vas ser - va - mi -". The music is in common time (C) and features a simple harmonic structure with quarter and eighth notes.



Handwritten musical score for the second system. It consists of three staves: a vocal line in G major, a piano accompaniment in G major, and a bass line in G major. The lyrics are: "No - spus pi - vas ser - va - mi -". The music continues with similar notation to the first system.



Handwritten musical score for the third system. It consists of three staves: a vocal line in G major, a piano accompaniment in G major, and a bass line in G major. The lyrics are: "No - spus pi - vas ser - va - mi -". The music concludes with a final cadence.

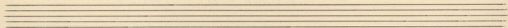
ELEFTERIOU MANOS
THEODORAKIS MIKIS

- 1 -

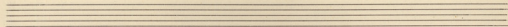
22

ECHI O THEOS

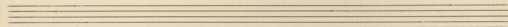
11



ma - re mi - se ra - pa - tri mi - se - ran - ti - bus. E -



mi - se - ran - ti - bus. E - no - bis quoniam tu so - lus san - ctus, tu so - lus



lus, tu so - lus san - ctus, tu so - lus san - ctus, tu so - lus san - ctus, tu so -

Handwritten musical score for the first system. It consists of three staves: a vocal line in G major (one sharp) and two piano accompaniment staves. The vocal line begins with a whole note rest labeled "pós" and then continues with the lyrics "Ni-d' go wás é-ze — wás é-ze ó de-". The piano accompaniment features a rhythmic pattern of eighth and sixteenth notes.

Handwritten musical score for the second system. It consists of three staves: a vocal line in G major and two piano accompaniment staves. The vocal line starts with a whole note rest labeled "is." followed by the lyrics "Tús é-ze mi". The piano accompaniment continues with a similar rhythmic pattern.

Handwritten musical score for the third system. It consists of three staves: a vocal line in G major and two piano accompaniment staves. The vocal line contains the lyrics "Óv pás ze-ze-a — Táv mi-ó". The piano accompaniment concludes with a double bar line and repeat signs.

Handwritten musical score for the first system. It consists of three staves. The top staff is a vocal line with lyrics: "spu - tu us in - vi - sibilis" (I) and "spu - tu us in - vi - sibilis" (II). The middle staff is a piano accompaniment with chords and melodic lines. The bottom staff is a bass line with chords and a melodic line. The music is in G major and 4/4 time. The first staff has a repeat sign at the end of the second measure.

Handwritten musical score for the second system. It consists of three staves. The top staff is a vocal line with lyrics: "vis" (I) and "vis" (II). The middle staff is a piano accompaniment with chords and melodic lines. The bottom staff is a bass line with chords and a melodic line. The music is in G major and 4/4 time. The first staff has a repeat sign at the end of the second measure.

Four empty musical staves at the bottom of the page, arranged vertically. Each staff has a treble clef and a key signature of one sharp (F#).

FEVGOUR I MERES KI'D KAIROS.

12

$\text{♩} = 60-63$

Handwritten musical score for the first system. It consists of two staves: a treble clef staff and a bass clef staff. The treble staff begins with a circled '5' and contains a melodic line with eighth and sixteenth notes. The bass staff provides a harmonic accompaniment with eighth and sixteenth notes. The key signature has one flat (B-flat) and the time signature is 4/4.

Handwritten musical score for the second system, continuing the melody and accompaniment from the first system. It features the same two-staff structure with treble and bass clefs, maintaining the 4/4 time signature and one flat key signature.

Handwritten musical score for the third system. The treble staff includes the lyrics: "Hp - bar ra ba - - ra ra ra - pis". The musical notation continues with notes and rests on both staves. The system concludes with a double bar line.

Handwritten musical score for the first system. The top staff is a vocal line in G major, starting with a whole note G4 and a quarter note A4. The lyrics "zia" are written below the first note, and "za' dai-ya' zai' riv' f2-m" are written below the subsequent notes. The piano accompaniment consists of two staves: the upper staff has a treble clef and a key signature of one sharp (F#), with chords and a melodic line; the lower staff has a bass clef and a key signature of two flats (Bb), with a bass line. The system concludes with a double bar line.

Handwritten musical score for the second system. The vocal line continues with a whole note G4 and a quarter note A4, with the lyrics "zia" below. The piano accompaniment continues with chords and a melodic line in the upper staff, and a bass line in the lower staff. A circled '5' is written above the end of the system, and a '5' is written below the piano staff. The system concludes with a double bar line.

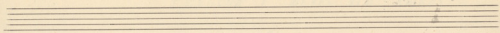
Four empty musical staves at the bottom of the page, consisting of four sets of five-line staves.

Handwritten musical score for the first system. The vocal line is in G major, 4/4 time, with lyrics: "nó-ze ná uga-jos ói-poo-pús." followed by "uga-é óé". The piano accompaniment consists of chords in the left hand and a melodic line in the right hand. There are first and second endings marked with "1." and "2." above the vocal line.

Handwritten musical score for the second system. The vocal line continues with lyrics: "on-je ó nai-pós" followed by "nai fpa-óv n' ói-uga na-ó's-". The piano accompaniment continues with chords and a melodic line.

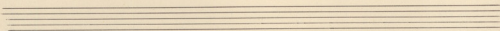
Handwritten musical score for the third system. The vocal line has lyrics: "rós" followed by "deú-jos ói ps-ps nó nau-". The piano accompaniment concludes with chords and a melodic line. There are some markings in the piano part, including a sharp sign (#) and a plus sign (+).

7-300



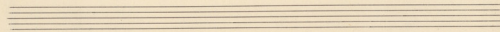
Handwritten musical notation for the first system. The vocal line (treble clef) contains the lyrics "pos" and "Mi' w' pa- rós si- val pe-". The piano accompaniment (bass clef) features a triplet of eighth notes in the first measure.

Handwritten musical notation for the second system, continuing the vocal and piano parts from the first system.



Handwritten musical notation for the third system. The vocal line (treble clef) contains the lyrics "nos." and "pa' m' pu- pi- en' in' qu-".

Handwritten musical notation for the fourth system, continuing the vocal and piano parts from the third system.



Handwritten musical notation for the fifth system. The vocal line (treble clef) contains the lyrics "zin'" and "zo' e' a- r'p' m' m' m' m' m' m'".

Handwritten musical notation for the sixth system, continuing the vocal and piano parts from the fifth system.