

-1-
NYXTA ΘΑΝΑΤΟΥ.

8 ΓΕΝΝΕΘΑΙΑ

Handwritten musical score for the first system of 'ΓΕΝΝΕΘΑΙΑ'. It features a treble clef with a key signature of one sharp (F#) and a 4/4 time signature. The music consists of a single melodic line in the treble clef and a bass line in the bass clef. The bass line is primarily composed of chords, with some notes written as stems and flags. The piece concludes with a double bar line and repeat dots.

Handwritten musical score for the second system of 'ΓΕΝΝΕΘΑΙΑ'. It features a treble clef with a key signature of one sharp (F#) and a 2/4 time signature. The music includes a vocal line with five numbered variations and a piano accompaniment. The piano part consists of a treble line with chords and a bass line with chords. The vocal line is written as a single melodic line with lyrics in Greek. The piece concludes with a double bar line and repeat dots.

1) μου τις τοί -
2) μου τις τία -
3) μου τία έα έα
4) μου τία έα
5) μου τί έμ

ΓΕΝΗΣΙΑ

1) εἰ - ναὶ εὐ - χαρί - στες
 2) εἰ - ναὶ εὐ - χαρί - στες
 3) εἰ - ναὶ εὐ - χαρί - στες
 4) εἰ - ναὶ εὐ - χαρί - στες
 5) εἰ - ναὶ εὐ - χαρί - στες

1) τὸ - τεύ - χος
 2) τὸ - τεύ - χος
 3) τὸ - τεύ - χος
 4) τὸ - τεύ - χος
 5) τὸ - τεύ - χος

Handwritten musical score for the first system. The top staff is a vocal line in G-clef with a treble clef. It contains five variations of lyrics, numbered 1) through 5). The lyrics are in Greek. The bottom staff is a guitar accompaniment in G-clef with a bass clef, featuring a rhythmic pattern of sixteenth notes with a '6' above the staff, indicating a sixteenth-note figure. The guitar part consists of two measures, each with a sixteenth-note figure and a bass line.

1) Ἐ ΧΕΙΣ ΠΕΙ να ΔΕΙ
2) ΔΕΙ ΧΕΙΣ ΓΑ να ΔΕΙ
3) Ἐ να ΧΕΙ να ΧΕΙΣ
4) ΠΕΙ να ΠΟΥ ΕΙ μι
5) ΠΕΙ να ΔΕΙ να ΠΕΙ

Handwritten musical score for the second system. The top staff is a vocal line in G-clef with a treble clef. It contains five variations of lyrics, numbered 1) through 5). The lyrics are in Greek. The bottom staff is a guitar accompaniment in G-clef with a bass clef, featuring a rhythmic pattern of sixteenth notes with a '6' above the staff, indicating a sixteenth-note figure. The guitar part consists of two measures, each with a sixteenth-note figure and a bass line.

1) να ΠΟΙΕΙ πο
2) ΚΑΙ δε πο
3) ΠΑΙ ΚΙ να
4) ΠΟΥ ΔΕΙ ΣΕ
5) Ἐ γω ΠΕ

ΓΕΝΝΗΘΙΑ

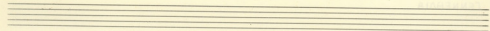
1) α
2) α
3) α
4) α
5) α

σα, σου, και, Τη, αν
α, σου, δια, σου, α
α, σου, μου, σου, α

6

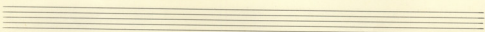
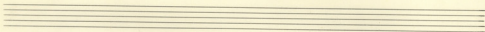
1) α σου Κι
2) α σου σου Χω
3) α σου σου Τη
4) α σου σου Κι
5) α σου σου Τη

6



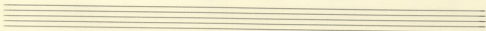
Handwritten musical score for the first system. It consists of five vocal staves and a piano accompaniment. The vocal parts are numbered 1 through 5. The lyrics are in Greek. The piano part features a treble and bass clef with chords and a melodic line.

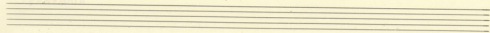
1) Xa u	Ho	pe	va	Tia	Xa
2) pis	a	pa	Tu	Kai	re o
3) oiw	pas	fu	vouy	Tai	ai
4) u	Kev	pe	va	ti	Xes e
5) ps	uai	va	pe	oiv	oiv



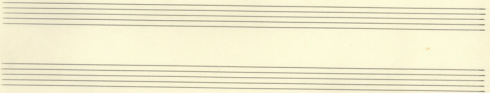
Handwritten musical score for the second system. It consists of five vocal staves and a piano accompaniment. The vocal parts are numbered 1 through 5. The lyrics are in Greek. The piano part features a treble and bass clef with chords and a melodic line.

1) d	ju	deoy
2) oiw	Kai	de
3) Eis	pa E	pe
4) uir	pev	de
5) pas	E	ju

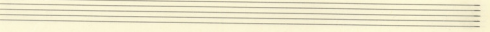




1)	qu	ra	ca	de	apo
2)	po	pa	kai	o'as	jous
3)	ra	m	kap	dei	fu
4)	ses	co	ta	je	soi
5)	pe	jo	ju	ca	pe



1)	a	oou	ka'e
2)	co	oou	ku
3)	se'	psi	tiw
4)	coi	zi	ki'8
5)	co	ses	ti'w



Handwritten musical score for the first system. The vocal line is in G-clef with a key signature of one flat (F major/D minor). It contains five numbered options for lyrics. The piano accompaniment is in F-clef and features a rhythmic pattern of sixteenth notes with slurs and accents.

1) x6 a	no,	d
2) p5	a	ce
3) 6v	pa,	ra
4) 22	kev	pi
5) 7es	Kai	va

Handwritten musical score for the second system. The vocal line is in G-clef with a key signature of one flat (F major/D minor). It contains five numbered options for lyrics. The piano accompaniment is in F-clef and features a rhythmic pattern of sixteenth notes with slurs and accents.

1) va	na	na	66
2) 6m	naa'	Noo	66
3) 7our	na	n	255
4) 7es	ei	XESE	Kai
5) 7E	ay	Xu	7es

Handwritten musical score on page 54, page number -8-. The score consists of ten staves. The first two staves are empty. The third staff contains a treble clef, a key signature of one sharp (F#), and a 3/4 time signature. It features a melodic line with a triplet of eighth notes, a slur over a group of notes, and a '6' above a slur. The fourth staff contains a bass clef, a key signature of one sharp (F#), and a 3/4 time signature. It features a bass line with a triplet of eighth notes, a slur over a group of notes, and a '6' above a slur. The fifth staff contains a treble clef, a key signature of one sharp (F#), and a 3/4 time signature. It features a melodic line with a triplet of eighth notes, a slur over a group of notes, and a '6' above a slur. The sixth staff contains a bass clef, a key signature of one sharp (F#), and a 3/4 time signature. It features a bass line with a triplet of eighth notes, a slur over a group of notes, and a '6' above a slur. The seventh staff contains a treble clef, a key signature of one sharp (F#), and a 3/4 time signature. It features a melodic line with a triplet of eighth notes, a slur over a group of notes, and a '6' above a slur. The eighth staff contains a bass clef, a key signature of one sharp (F#), and a 3/4 time signature. It features a bass line with a triplet of eighth notes, a slur over a group of notes, and a '6' above a slur. The ninth staff contains a treble clef, a key signature of one sharp (F#), and a 3/4 time signature. It features a melodic line with a triplet of eighth notes, a slur over a group of notes, and a '6' above a slur. The tenth staff contains a bass clef, a key signature of one sharp (F#), and a 3/4 time signature. It features a bass line with a triplet of eighth notes, a slur over a group of notes, and a '6' above a slur.