

ELEFTERIOU MANOS
THEODORAKIS MIKIS

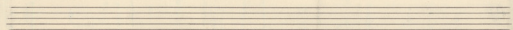
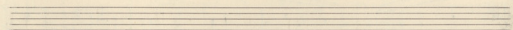
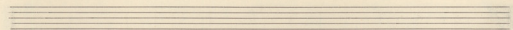
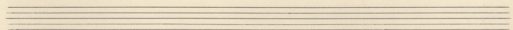
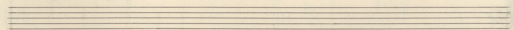
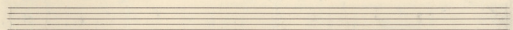
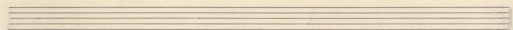
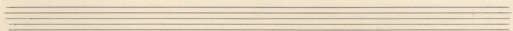
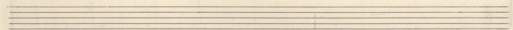
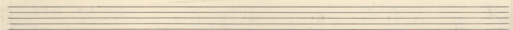
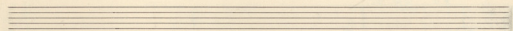
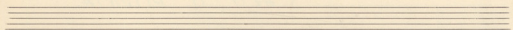
-1-

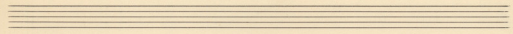
B 6⁶

S' AFTI TI GITONIA.

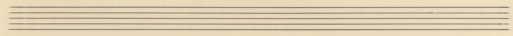
3

88-90

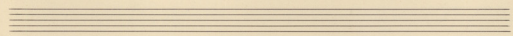




Handwritten musical notation for the first system. It consists of three staves: a vocal line in G major (one sharp) and 2/4 time, and two piano accompaniment staves. The lyrics are: *Εὐ- τὴ τὴ γη- τὴ-*



Handwritten musical notation for the second system. It consists of three staves: a vocal line in G major and 2/4 time, and two piano accompaniment staves. The lyrics are: *να εὐ- τὴ τὴ γη- τὴ- εὐ-*



Handwritten musical notation for the third system. It consists of three staves: a vocal line in G major and 2/4 time, and two piano accompaniment staves. The lyrics are: *τὴ τὴ γη- τὴ- τὴ- και εὐ- τὴ και εὐ-*

Handwritten musical score for the first system. It consists of three staves: a vocal line in G major (one sharp) and a piano accompaniment in G major. The vocal line begins with a fermata over a dotted quarter note, followed by the lyrics "τε- πα- ρα- με και αυ- ρα- με ο-". The piano accompaniment features a simple harmonic accompaniment with chords and moving bass lines.

Handwritten musical score for the second system. The vocal line continues with the lyrics "ζου- ζυ- πε ζυ- η. τε- πα- ρα- με και". The piano accompaniment continues with similar harmonic support.

Handwritten musical score for the third system. The vocal line concludes with the lyrics "αυ- ρα- με ο- ζου- ζυ- πε ζυ- η. —". The piano accompaniment ends with a final chord. The word "FIN" is written in the bottom right corner of the system.