

15

ΕΥΑΓΓΕΛΙΑ ΠΙΣΣΑ

Τε πα θαν ζα χρο νια θαν ζο ελω ρει νο το ζα ρι

Handwritten musical notation for piano accompaniment, including chords and a melodic line.

Τε πα ος αυ ου Τε πα ος αυ ου Τε πα ος αυ ου

Handwritten musical notation for piano accompaniment, including chords and a melodic line.

Εὐαγγέλιον Πίπτα

Handwritten musical notation for the first system, featuring a vocal line and a piano accompaniment line. The vocal line includes the lyrics: "μή σα - ρεν γω ἢ πού. Τῷ πα. ἁγίῳ ἡ δὴ πατὴρ ἡ δὴ".

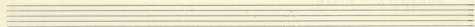
Handwritten musical notation for the second system, continuing the vocal and piano parts from the first system.

Two empty musical staves, likely intended for a second system of music.

Handwritten musical notation for the third system, featuring a vocal line with the lyrics: "ἡ δὴ πατὴρ ἡ δὴ Τῷ πα. ἁγίῳ ἡ δὴ πατὴρ ἡ δὴ".

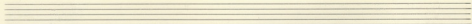
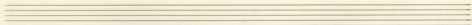
Handwritten musical notation for the fourth system, continuing the vocal and piano parts.

Two empty musical staves at the bottom of the page.



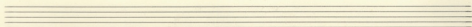
Handwritten musical notation in G major (one sharp) and 3/4 time. The melody is written on a treble clef staff. The lyrics are: *α φη σου και ουρα σου τη σα νε*

Handwritten musical notation in G major and 3/4 time. The accompaniment is written on a grand staff (treble and bass clefs). The bass line features a steady eighth-note accompaniment.



Handwritten musical notation in G major and 3/4 time. The melody is written on a treble clef staff. The lyrics are: *τω πα σου να δε ηε πα γιο σου ου ε.*

Handwritten musical notation in G major and 3/4 time. The accompaniment is written on a grand staff (treble and bass clefs). The bass line features a steady eighth-note accompaniment.

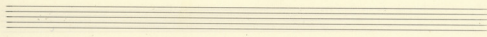


Handwritten musical notation for the first system. The vocal line is in G major (one flat) and 2/4 time. The lyrics are: Κηι vαι ωου παρ ωδ ve ουv ο Γαι παρ.

Handwritten musical notation for the second system, showing piano accompaniment. The upper staff contains chords, and the lower staff contains bass notes with stems. The notation is in G major and 2/4 time.

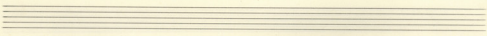
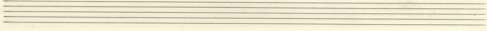
Handwritten musical notation for the third system. The vocal line is in G major (one flat) and 2/4 time. The lyrics are: Ορη ua ve ουι Νυ Χτα ουι Νυ Χτα ζει θα va ζου 'Ε.

Handwritten musical notation for the fourth system, showing piano accompaniment. The upper staff contains chords, and the lower staff contains bass notes with stems. The notation is in G major and 2/4 time.



Handwritten musical notation for the first system. It features a treble clef, a key signature of two flats (B-flat and E-flat), and a common time signature. The melody consists of eighth and quarter notes. Below the staff, the lyrics are written in Greek: "γῶ οὐ οὐ το πᾶ γῶ εἰ γῶ οὐ οὐ το πᾶ γῶ εἰ".

Handwritten musical notation for the second system. It includes a treble clef, a key signature of two flats, and a common time signature. The melody continues with eighth and quarter notes. Below the staff, there are no lyrics. The system concludes with a double bar line and a key signature change to one flat (B-flat).



Handwritten musical notation for the third system. It features a treble clef, a key signature of two flats, and a common time signature. The melody consists of eighth and quarter notes. Below the staff, the lyrics are written in Greek: "γῶ οὐ οὐ το πᾶ γῶ κα ρα ρα γῶ γῶ".

Handwritten musical notation for the fourth system. It includes a treble clef, a key signature of two flats, and a common time signature. The melody continues with eighth and quarter notes. Below the staff, there are no lyrics. The system concludes with a double bar line and a key signature change to one flat (B-flat).

