

(4)

ΣΕ ΛΕΝΕ ΜΑΝΑ ΤΟΥ ΧΡΙΣΤΟΥ

Ποικιλία ἁφροσύνη = < Ἄρδη στο Τρέπας >

8

Musical notation for the first system, including a vocal line and a piano accompaniment line. The key signature has two flats (B-flat and E-flat). The vocal line contains the lyrics: Σε - λε - νε μα - να / Σε - λε - νε μα - να.

8

Musical notation for the second system, including a vocal line and a piano accompaniment line. The key signature has two flats. The vocal line contains the lyrics: μα - να λε - νε - χρι - στου / Μα - να λε - νε - χρι - στου.

Musical notation for the third system, including a vocal line and a piano accompaniment line. The key signature has two flats. The vocal line contains the lyrics: ce jew uia jia bar / και μα να λε νε ωι.

Musical notation for the fourth system, including a vocal line and a piano accompaniment line. The key signature has two flats. The vocal line contains the lyrics: και μα να λε νε ωι.

ΣΕ ΑΕΝΕ ΜΑΝΑ ΤΟΥ ΧΡΙΣΤΟΥ

Handwritten musical notation for the first system, featuring a treble clef, a key signature of two flats (B-flat and E-flat), and a 2/4 time signature. The melody is written on a single staff with the following lyrics:

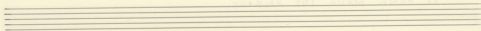
Εα - - πα
 Κηρ δι του κα ρπου του - υγι -
 να - - του
 παρ ου αυ πα πι να - και -

Handwritten musical notation for the first system, featuring a bass clef and a key signature of two flats. The accompaniment consists of chords and single notes on a single staff.

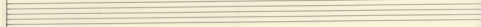
Handwritten musical notation for the second system, featuring a treble clef, a key signature of two flats, and a 3/4 time signature. The melody is written on a single staff with the following lyrics:

ε του
 ε γης
 ομο πα τος αν αρ τα - -
 ρις υις του πα να - -

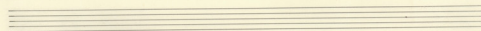
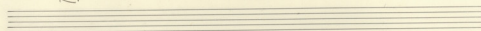
Handwritten musical notation for the second system, featuring a bass clef and a key signature of two flats. The accompaniment consists of chords and single notes on a single staff.



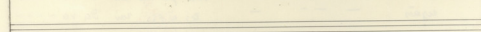
Musical notation for the first system, featuring a vocal line in G major with lyrics "d. pa 200" and "Am".



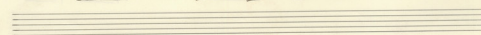
Piano accompaniment for the first system, showing chords and bass lines.

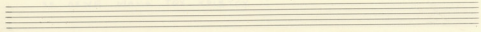


Musical notation for the second system, featuring a vocal line in G major with lyrics "ou va sai" and "Kai Sap Dus".



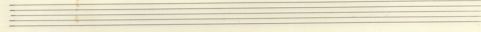
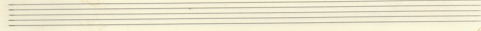
Piano accompaniment for the second system, showing chords and bass lines.





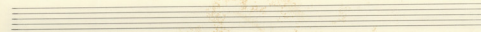
Handwritten musical notation for the first system, featuring a vocal line with lyrics in Greek: "Kai pwsao stera-pi yn - ces" and "po' sou av". The notation includes a treble clef, a key signature of one flat (B-flat), and a common time signature (C).

Handwritten musical notation for the piano accompaniment of the first system, including treble and bass staves with chords and melodic lines.



Handwritten musical notation for the second system, featuring a vocal line with lyrics in Greek: "Epi' tou Kiri Epe Esi - ti ou ew". The notation includes a treble clef, a key signature of one flat (B-flat), and a common time signature (C).

Handwritten musical notation for the piano accompaniment of the second system, including treble and bass staves with chords and melodic lines.



Handwritten musical score on page 5. The score is written on a grand staff consisting of two staves: a treble clef staff on top and a bass clef staff on the bottom. The key signature is one flat (B-flat). The music begins with a treble clef and a B-flat key signature. The first staff contains a series of chords, each marked with a sharp sign (#). The second staff contains a series of chords, each marked with a sharp sign (#). A fermata is placed over the final chord of the second staff. The word "FIN." is written above the final chord of the second staff. The score ends with a double bar line and a repeat sign. There are several empty staves below the main score.