

(3) ТОУ ХАРДЫ Н МАНА.

Алқисамы "Алқисамы" - "Ера Сегіз"»

Handwritten musical score for the first system. It consists of three staves. The top staff is a treble clef with a key signature of two flats (B-flat and E-flat) and a 9/8 time signature. The middle staff is a treble clef with the same key signature and time signature, containing a melodic line with eighth and quarter notes. The bottom staff is a bass clef with the same key signature and time signature, containing a harmonic accompaniment of chords. Vertical dashed lines indicate bar boundaries.

Handwritten musical score for the second system. It consists of three staves. The top staff is a treble clef with a key signature of two flats (B-flat and E-flat) and a 4/4 time signature. The middle staff is a treble clef with the same key signature and time signature, containing a melodic line with eighth and quarter notes. The bottom staff is a bass clef with the same key signature and time signature, containing a harmonic accompaniment of chords. Vertical dashed lines indicate bar boundaries.

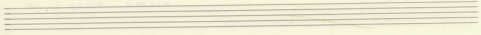
ΤΟΥ ΚΑΡΟΥ Η ΜΑΥΑ.

Handwritten musical score for the first system. It consists of a vocal line and a piano accompaniment. The key signature is two flats (B-flat and E-flat), and the time signature is 4/4. The vocal line begins with a treble clef and contains the lyrics "ΤΟΥ ΚΑΡΟΥ Η ΜΑΥΑ." written above the staff. The piano accompaniment is written in a grand staff (treble and bass clefs) and features a steady bass line with chords in the right hand.

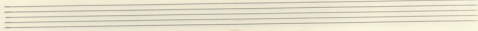
Handwritten musical score for the second system. It continues the vocal line and piano accompaniment from the first system. The vocal line includes the following lyrics: "Χα ου η Με ρα α ες ες", "Ξε γιν φα γι, ομ Τε ρα γα υα", and "Τα ρα γα υε υαυ ου γα υε". The piano accompaniment continues with similar harmonic support.

Spó to Kí a m' eó - pi K'áio zov ío  
evn to vo te vi - zis Tpa ul eoi  
ma ppa pé m' epe - va Kú pavis zis

ú á ra ses ra ppo (F) Th pav za  
vía ve cu ro deá vai xi zoi é  
no xa po te zó rov xa paví



σάι τια πα πα από τα δέντρα σε πο έδ -  
 υπάκουε τα σάα βού Του χάρ οι γο γι σποι -  
 φαρά ες πι γά δει εα φα να κι αν -



p  
 mos.  
 sei

DACCAPÒ

