



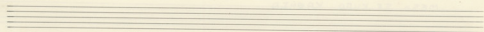
MESA SE KHTO KATHENA

Musical notation for the first system, featuring a treble clef and a key signature of two flats (B-flat and E-flat). The melody is written on a single staff with lyrics underneath. The lyrics are: "MÉ sa se khí wo ká en sa kai óē ra te pí / Tw pa o khí wo xá en ut kai pí poi sé tēp".

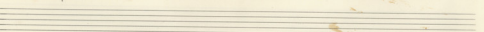
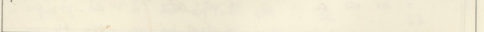
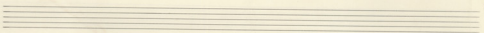
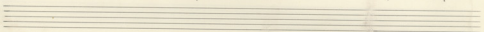
Musical notation for the second system, including a bass clef and a key signature of two flats. It features a piano accompaniment with chords and a melodic line. The text "(Κοιμή)" is written above the staff.

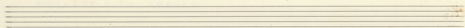
Musical notation for the third system, including a treble clef and a key signature of two flats. The melody includes a repeat sign. The lyrics are: "bó - te má ku pia mi á wó ya pa / bó - te kai zé sep pí ve séē xú pa".

Musical notation for the fourth system, including a bass clef and a key signature of two flats. It features a piano accompaniment with chords and a melodic line, including a repeat sign.

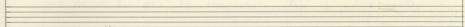


mid ku pia un uai juo - jm  
paip de ran ua de guo - jm

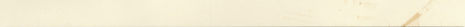
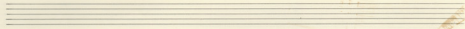




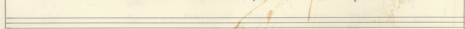
Musical staff with lyrics: Tous les jours pour eu



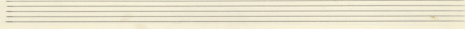
Musical staff with lyrics: FIN

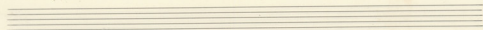


Musical staff with lyrics: rân zîn sa uai ou ya fi sêp - ma - vi

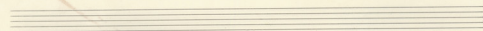
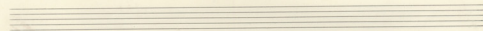
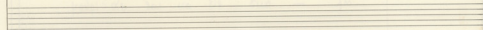


Musical staff with lyrics: rân zîn sa uai ou ya fi sêp - ma - vi

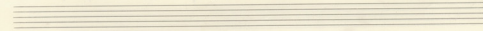
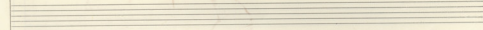


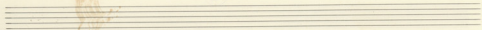


Σεις Τεφ φη Δι ασ ρα ρε να και ρε θα σα ρι

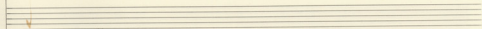


κα - ρι ρεις Τεφ φη Δι ασ ρα ρε να





Musical notation for the first staff, including a treble clef, a key signature of two flats (B-flat and E-flat), and a 4/4 time signature. The melody consists of two measures. The first measure contains the notes G4, A4, Bb4, and A4. The second measure contains the notes G4, A4, Bb4, and a whole note G4. Below the notes, the lyrics "Kai oú tha sa gi ma - vi" are written. A small cross symbol is placed above the 'ma' syllable.



Musical notation for the second system, including a treble clef, a key signature of two flats, and a 4/4 time signature. The melody consists of two measures. The first measure contains the notes G4, A4, Bb4, and A4. The second measure contains the notes G4, A4, Bb4, and a whole note G4. Below the notes, the lyrics "Kai oú tha sa gi ma - vi" are written. A small cross symbol is placed above the 'ma' syllable. Below the melody, a guitar accompaniment is shown with chords: G4, A4, Bb4, and A4. A small cross symbol is placed above the 'ma' syllable. The text "DA CAPO." is written to the right of the second measure.

