

Ἄπειρος  
Τραγοειδὲς Πιναίο

8-IV-46

Αθήνα

Μ. Γ. Οροδωπάκης

Χαριζόμενοι ἐν Μυστρῶν  
 πᾶσι ἀνθρώποις καὶ ἀφ' ἑαυτῶν  
 ἑαυτοὺς καὶ τοὺς ἀδελφοὺς ἑαυτῶν  
 ὡς ἑαυτοὺς ἀγαπήτω

Μουσ. Δαρίμα 8 Απριλίου 1946

ΑΓΓΡΙΑ Η Σ  
 (Τρα γοῦδ. Πιάνο)

Α. Γ. Θεοδωροπούλου

Poco Andante quasi, budino

Τὴν δ' οὐκ ἔλατο, γὰρ ἐστὶν ἄνοητος ὁ ἄλλος

Ἐννοεῖται ὁ δὲ καὶ ἡμεῖς καὶ ἡμεῖς ἐννοεῖται ὁ δὲ καὶ ἡμεῖς

*f* poco più mosso

Rall. *dim*  $\text{rit.}$

Ποῦ εἶναι ἡ αἰτία καὶ πῶς νὰ ἴσῃ ποῖ. οὐκ ἔστιν ἡ ἀπορία τοῦ ἔργου.

Handwritten musical score for the first system. It consists of a vocal line and a piano accompaniment. The piano part is marked "legato". The music is in a major key and 4/4 time. The vocal line has a melodic contour that rises and then falls. The piano accompaniment provides harmonic support with chords and moving lines.

*p* Tempo

Ὁμοίως εἶναι καὶ νὰ πῶς εἶναι ἡ ἀπορία καὶ πῶς.

Handwritten musical score for the second system. It consists of a vocal line and a piano accompaniment. The piano part includes the instruction "p". The music is in a major key and 4/4 time. The vocal line has a melodic contour that rises and then falls. The piano accompaniment provides harmonic support with chords and moving lines.

*cel.*

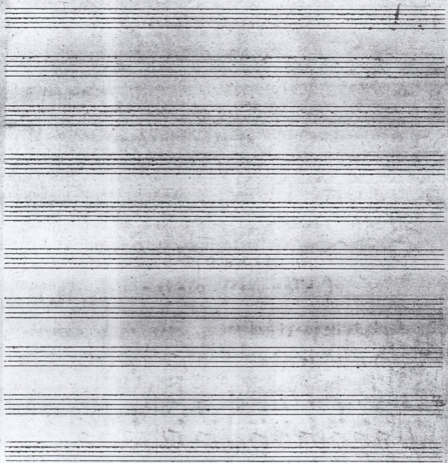
*f*

*Tempo*

Ποῦ εἶναι ἡ ἀπορία καὶ πῶς εἶναι ἡ ἀπορία καὶ πῶς.

Handwritten musical score for the third system. It consists of a vocal line and a piano accompaniment. The piano part includes the instruction "cel." and "Tempo". The music is in a major key and 4/4 time. The vocal line has a melodic contour that rises and then falls. The piano accompaniment provides harmonic support with chords and moving lines.



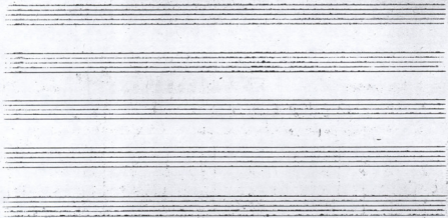


ΑΡΧΗ ΤΗΣ ΣΥΜΦΩΝΙΑΣ  
- ΤΡΑΓΟΥΔΙΟΥ -

Μα. Γ. Δαλιανός

Αθήνα

8.10.46



ΑΡΡΙΑΣ  
- Τραγούδι. νιάρο -

M. P. Gerasimopoulos

Poco Andante quasi Andino

Τὴν ἀ-γί-αν ἐκ-κλ-η-σί-αν τὴν καθολικὴν ἀ-γί-αν ἐκ-κλ-η-σί-αν

Πα-τὴρ ὁ Θεὸς ὁ πα-τήρ ὁ μονο-θε-ὸς ὁ ἀ-ει-ὸν ὁ ἀ-όρα-τος ὁ ἀ-κρίβητος ὁ ἐκ-κλ-η-σί-αν

*F più mosso* *sulito rall*  
*pramissimo* *dim.* *♩*

ἦν - να νε - λὴ κα - ρί - α καί - τιν' ἄ - λ - λ - α - ρί - ον κί - α κα - ρί - α ἐ - σ - τὶ - ον πα

*Tempo* *mf* *con più mosso*

ὄ - παν - σοῖ κί - α - να - ρί - α ἀ - λ - λ - α ἐ - σ - τὶ - ον κα - ρί - α κα - ρί - α ἐ - σ - τὶ - ον κα - ρί - α ἐ - σ - τὶ - ον

*over* *F* *Tempo*

σπ - ῖ - ρον κί - α - ρί - ον τοῦ - τος το - ρί - ον

8. IV. 46  
A. 1. 1. 1.





*dim* *p*

Ki pia kai pia tha xo pro ou kiou xap sia sto sto pa

*dim* *p*

O pates san xpo va pia an-thi epi va ht pia

*dim*

*Compte Plume*

Xo pi At vras a-ny epi you kai epi ta vt r Xop

*dim*

*dim*

*dim*

15

ΑΝΤΥΒΕΧΕΙΣ ΑΝΤΩΝ ΗΛΙΟ  
 ΤΗ ΧΑΡΑ.....  
 (Μίκης Θεοδωράκης)

*Andante*

*Andante*

Av-γυ-ρού-με αν-τών

Η- λιο- τή χα- ρά κι' αν-τών άσπυ-νο- σο-υ.

*Rit*

τό- το- πόν- τή γα- λή- νη Μή- να κραινής τήν καρ-  
 Μή- λυ- τή- σας ναύ- πειρ

*Rit*

55

Sia soua ti si-ky- kou  
 pu ya- kpa no-ke va  
 nou  
 sa.3

Si- pa ya- pu  
 kau. ca. ve ky)

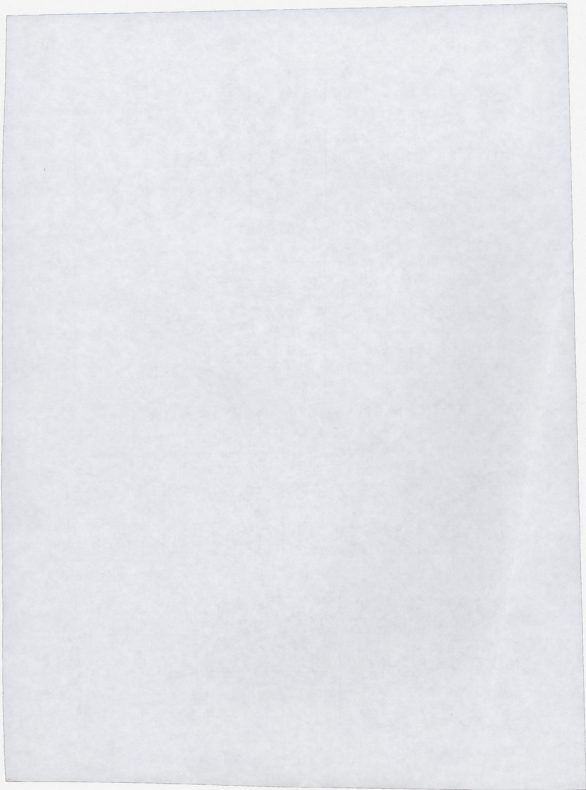
*Comme prima*

As pu- pe you- ke av- ta ya- tu xa- pa  
 Sav tou ti- ho no- lo obi- vei kia to se

Rit *ritardat* STENOS

noio no tu kia- no ra- sri pia kis oiv op w- ta ka  
 sap te vi lou ot Kap sri tis kay te ca en ya- tu

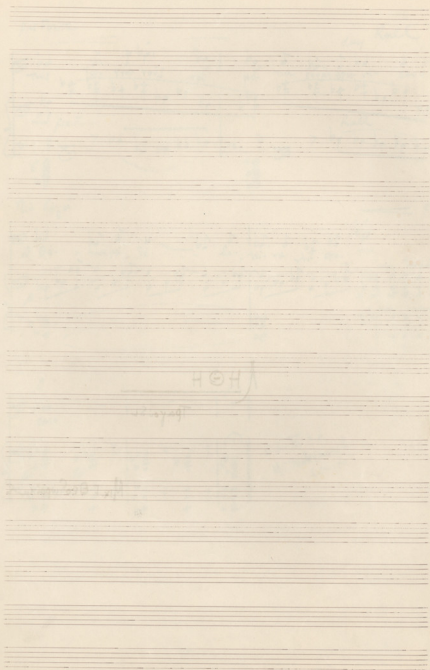
*Involta.*



Λ Η ⊕ Η  
\_\_\_\_\_

Τραγούδι

Μητ. Γ. Θεοδωροπούλου



Στίχ. Δ. Μαρτί

ΛΗΘΗ  
- Λ. Μολιζού -

Μ. Γ. Θεοδωράκης

*Andante molto espressivo*

*Rall pp*

Tempo

Δ.Χ. *ff* *mf* *pp*

Α.Χ. *ff* *mf* *pp*

Δ.Χ. *ff* *mf* *pp*

Α.Χ. *ff* *mf* *pp*

Α.Χ. *ff* *mf* *pp*

*mf*

*cresc*

Καὶ λὸς τοῦ οἴ. Ἰε-ϋ

*mf*

*ped*

Κποι του. λης. ηο

*Poco piu mosso*

ο. υαδ. ου. φη. εη. ο η. λιοδ και. το. σου. που ηηδ. κηου

*cresc molto*

ση. ου



*Lento*

Mi - Tois kraïs

*cantabile*

*Tempo poco*

dem - jostit kam - jost

*Rall* *Tempo. ma poco meno mosso*

sen - ses kai va. va. Te. rolav w. pa t. yu.

*Rall*

*Tempo. ma poco meno mosso*

*MF*

ces - cen - do Xes Si - viv kai noi - ve stis th - sta - ras thv

FF

Kp. - sta - te - via - spu - sy - Ma -

loop - - - Kos To - - - ve

*dim* *rall* *sec* *meno mosso*

pa - xi - da - par - pi -

pa - - - sta - - - dex - - - yau -

tes - - - Sa - xpo - - - do - - - ya - na - ve

*dim.*

Tempo

*rall*

Kra - - - nion - - - do - - - xo - - - ve - - - pa - - - fa -

Handwritten musical score for the first system. The vocal line includes the lyrics "Va-ou- Houv. Tou". The piano accompaniment features dynamic markings *mf* and *espress.*, and a *dim* marking. The system concludes with a repeat sign.

Handwritten musical score for the second system. The vocal line includes the lyrics "O Sia- Sou. va. vras xri- Sou. Si- a. nas- po- Si-". The piano accompaniment includes the marking *dim* and ends with a repeat sign.

Handwritten musical score for the third system, marked "Sotto voce". The vocal line includes the lyrics "Ho- - vous na- Anou nov- Me- sa tou xri- Houv Tou". The piano accompaniment includes dynamic markings *mf* and *mf*. The system concludes with a repeat sign.

Handwritten musical score for the fourth system, marked "Tempo I Ma poco meno mosso". The vocal line includes the lyrics "A- na- pa- va. xri- Sou. Si-". The piano accompaniment includes dynamic markings *mf* and *dim*. The system concludes with a repeat sign.

*piu Forte*

Tous  
 Tu. yra vous  
 ta

*dim* *Rall*

Tia. souv. vi- souv

*piu F*

*Rall*

*Trio* *Andante*

Θι.  
 σουχοι σε.  
 ρει. να  
 σου.

*F*

*p*

souv

*pp*

*f*

*f*

*f*

*f*

*f*

*f*

5-6. III. 48  
 M. P. Pedalissimo  
 Andante

ΛΗΘΗ - τραγούδι -

- Α. Μάβιου -

Μ. Γ. Θεοδωράκης

Αθήνα

1948

Handwritten musical score for a string quartet. The score is written on four staves. The first staff is marked with a forte dynamic (**FF**) and includes the instruction *con forza*. The second staff is marked with a piano dynamic (**p**). The third staff is marked with a forte dynamic (**FF**). The fourth staff is marked with a piano dynamic (**p**). The score includes various musical notations such as notes, rests, and dynamic markings. There are also some handwritten annotations and symbols, including a large '3' in the fourth staff.

Handwritten musical notation on a single staff. The notation includes various time signatures and notes. The first measure is marked with a 7/8 time signature and a piano dynamic (**p**). The second measure is marked with a 2/4 time signature and a piano dynamic (**p**). The third measure is marked with a 7/8 time signature and a piano dynamic (**p**). The fourth measure is marked with a 2/4 time signature and a piano dynamic (**p**). The notation includes notes, rests, and dynamic markings.

# ΛΘΗ

(Α. Μάβινο)

*Audante molto espressivo* *hall* *Tempo* *M. f. Decisamente*

*M. f.*

*o. ccc*

Ka-ro-tu-xo-ya-

*dmp*

Koι - nov. λi-σπο-ya

Th. πi. Kpa

*Poco più mosso*

*mp*

O. Vra-δu. O. O. O. O.

*cresc* *molto*

11- Xios Kai To sou-poo-ros Khou. 94 *seu*

*FF* *lamentoso*

Mh! *FF* *Mh* *Tous*

*poco*

Xrais *dum* *poco*

*cantabile* *poco*

*hall* *Tempo*

- sou-s - sos Kai var var *hall*

ote. *Tempo* Touzou in pa ot-yy



cre - ce V ndo

Xes - si - vōōv kai nā - ve stās. An - tho - viās thv

FF

Kpu - sta te via epū. sn. Ma

gōp. ka to - ve

*Rall* *dim*

pa ki sta kav - pi - ste

*Meno mosso*

A Meno mosso sta the - yāw

tes

Sa - kvōōv ēā - ya - nā - ve

*F* *dim*

*Rall* Tempo

*Rall* *pp* *mf* *express*

ΚΙ-ΑΙ-ΝΟΥ-ΘΟ-Ι-Σ-ΠΟ-ΛΙ-ΤΑ-Ν  
 Ya bu-lyit. Tan

*pp* *mf* *dim.*

ΣΑ-ΒΑΙ-ΤΑ-ΥΙΑΣ ΧΕΙ-ΡΑ-ΣΙ-Ω-Ν  
 Ta-epo-shi-  
 Ta-epo-

*sotto voce* *mf*

Η-ΘΕ-ΛΟΥΜΕΝ  
 Ho - You - ta - lyo - noi - ye - sa - tou - kol - lyo - lyit - Tan

*sotto voce* *mf*

Tempo I

*mf*

Α-ΓΑ-ΠΗ ΠΙΣ-ΤΙ-ΝΑ  
 A - ga - pi - tis - ti - na - pa - ra - Krau - to - Sei -

*mf*

*piu forte*

Tous - tu. xia - xis ra - va

*dim Rall*

*piu F*

*dim Rall*

ra - va sou - vi - vi - sou - vi

*lii apai*

de sou - va - xi - vi

*F*

*pp*

*pp*

*pp*

*pp*

*pp*

*pp*

5-6-III-48

M. J. ...

...

ΕΡΟΣ ΚΑΙ ΘΑΝΑΤΟΣ  
(A. Mabitxas)

Mixis Despaix

Handwritten musical notation for the first system. It features a treble clef staff with a vocal line and a bass clef staff with piano accompaniment. The key signature is one sharp (F#) and the time signature is common time (C). The tempo marking is *simile*. The system concludes with a double bar line and a 3/4 time signature.

Εὐχὴ κατὰ τὴν για -  
Με. ἔ-κοι-τα-φε-va-

Handwritten musical notation for the second system. It features a treble clef staff with a vocal line and a bass clef staff with piano accompaniment. The key signature is one sharp (F#) and the time signature is common time (C). The system concludes with a double bar line and a 3/4 time signature.

να ἦρα κοῦρη-κι- γα Εὐ - τα χί' α-νοῦ-τοῦ  
σοῦ-παρ-ηο-τα. Μα η- το. το-σο-βα-β-στρ-vo ...

Handwritten musical notation for the third system. It features a treble clef staff with a vocal line and a bass clef staff with piano accompaniment. The key signature is one sharp (F#) and the time signature is common time (C). The system concludes with a double bar line and a 3/4 time signature.

ΕΡΟΣ ΚΑΙ ΘΑΝΑΤΟΣ  
(Α. ΜΑΘΙΟΥ)

Μίκης Θεοδωράκης

*Andante*

*Andante*

2. - δὴ - πα- τῆ- ρα - τῆ- ρα -  
1. - ἡ - εἰ - λη - σῆ - να -

νά - τῆ - βού - λη - σῆ - να. va. εἰ - το - χί - α - σου - τὸ - γῆ -  
σοῦ - πα - το - ς - ἡ - εἰ - για - τὸ - βί - ο - λο - γο - σῆ - να -

Sé - vá - no - bu - tri - - - - - si .

*Ma - n - ro - bu - tri - - - - - va*

*Ma - o - no - bu - tri - - - - - va*

*Ma - o - no - bu - tri - - - - - va*

*Ma - o - no - bu - tri - - - - - va*

*Ma - o - no - bu - tri - - - - - va*

*Ma - o - no - bu - tri - - - - - va*

*Ma - o - no - bu - tri - - - - - va*

Φαί-η-  
 Ma-ρι-α το-ση ρο  
 f *dim...* *pp* *pp*  
 Solo.

του.  
 ο-ση-μα-ρι-α το-ση ρο-ση α-μαρ-τια-ν η-μιν κα-θη-ροι τρι  
*mf* *mf* *mf*

βα-σα-να-του.  
 ο-ση-μα-ρι-α το-ση ρο-ση α-μαρ-τια-ν η-μιν κα-θη-ροι τρι  
*pp* *pp*

βα-σα-να-του.  
 ο-ση-μα-ρι-α το-ση ρο-ση α-μαρ-τια-ν η-μιν κα-θη-ροι τρι  
 ο-ση-μα-ρι-α το-ση ρο-ση α-μαρ-τια-ν η-μιν κα-θη-ροι τρι

Handwritten musical score for the first system. The top staff is a vocal line in treble clef, 2/4 time, with lyrics: "a. pa. vi. te. tu. - q. tu. - ra. tu. - is. - vi. -". The bottom two staves are piano accompaniment in treble and bass clefs. The piano part includes a *rit.* marking and a *Roll* instruction. A checkmark is drawn above the vocal line.

Handwritten musical score for the second system. The top staff is a vocal line in treble clef, 2/4 time, with a fermata over the final note and the word "finis" written above. The bottom two staves are piano accompaniment in treble and bass clefs, with a fermata over the final chord and the word "finis" written above. A *leg.* marking is present in the piano part.

A series of ten empty musical staves, each consisting of a five-line staff with a clef and a key signature, intended for further musical notation.