

10

D ANTPEAS

1E ELZAI EADHNAS

1^o ΕΙΣΑΙ ΕΛΛΗΝΑΣ

(2)

Αὐτὸ πρὸς τὸν

(3)

(2)

Καὶ ὡς εἶπεν ἡμεῖς ἴσμεν ὅτι

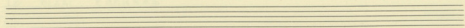
(2)

-2-

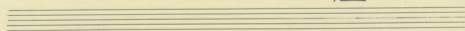
ΕΙΣΑΙ ΕΛΛΗΝΗΣ

πρὶ αὐτῶν γίνεσθαι πρὶ αὐτῶν

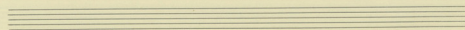
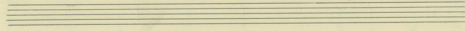
Καὶ ψαλμοὶ ἱερουργίας σου γὰρ



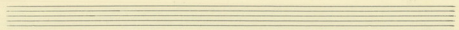
yi vu zi - - - - - yu os



ni - - - - - ek top - - - - - du on va

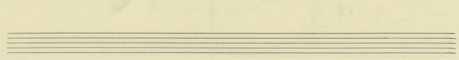


ΕΣΑΙ ΕΛΛΗΝΑΣ



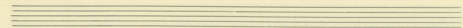
φρα σε us ves pi zu ει Bar vuv.

Ei ra ει - fu ves



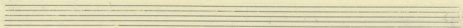
Handwritten musical score for the first system. The vocal line is in G major (one flat) and contains the lyrics: "Ei - - - sai Ei - - - - in von". The piano accompaniment consists of chords in the right hand and bass notes in the left hand. A triplet of eighth notes is marked with a circled "3" above the final measure of the system.

Handwritten musical score for the second system. The vocal line is in G major and contains the lyrics: "Ti vas - - - zw' tipo do si a fi zo". The piano accompaniment continues with chords and bass notes, including double bar lines in the left hand. A circled "2)" is written above the first measure of the vocal line, and a circled "3)" is written above the final measure of the piano accompaniment.



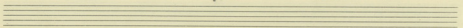
Handwritten musical notation in G-flat major (one flat). The melody consists of quarter notes: G⁴, A⁴, B⁴, G⁴. The lyrics are: ya za ———— ni vasa

Handwritten piano accompaniment for the first system. The right hand plays chords: G⁴ (quarter), A⁴ (quarter), B⁴ (quarter), G⁴ (quarter). The left hand plays chords: G² (quarter), A² (quarter), B² (quarter), G² (quarter). There are rests in the left hand for the first two measures.



Handwritten musical notation in G-flat major. The melody consists of quarter notes: G⁴, A⁴, B⁴, G⁴, A⁴, B⁴, G⁴, A⁴, B⁴, G⁴. The lyrics are: zwi Tpo So ri a pi zo Kea ri. There are circled numbers (3) above the 5th and 10th notes.

Handwritten piano accompaniment for the second system. The right hand plays chords: G⁴ (quarter), A⁴ (quarter), B⁴ (quarter), G⁴ (quarter), A⁴ (quarter), B⁴ (quarter), G⁴ (quarter), A⁴ (quarter), B⁴ (quarter), G⁴ (quarter). The left hand plays chords: G² (quarter), A² (quarter), B² (quarter), G² (quarter), A² (quarter), B² (quarter), G² (quarter), A² (quarter), B² (quarter), G² (quarter). There are rests in the left hand for the first two measures.

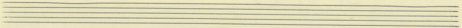




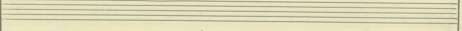
Handwritten musical notation on a single staff in G-flat major (one flat). The melody consists of quarter notes and eighth notes. The lyrics are written below the staff: "0 i sw ce gi op'os ou va ji va".

(3)

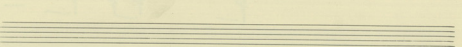
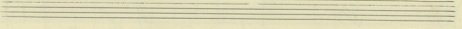
Handwritten musical notation for a piano accompaniment, consisting of two staves. The upper staff is in G-flat major and the lower staff is in C minor. The music features chords and rhythmic patterns.

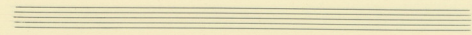


Handwritten musical notation on a single staff in G-flat major. The melody includes a long note with a fermata. The lyrics are: "a' - - - - - u os pi' ou va'".



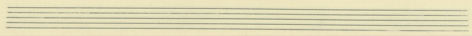
Handwritten musical notation for a piano accompaniment, consisting of two staves. The upper staff is in G-flat major and the lower staff is in C minor. The music features chords and rhythmic patterns.





Handwritten musical notation in G major (one flat) with lyrics: *δὲν ——— Τῆς αἰῶνι καὶ αἰῶνι αἰῶνι*

Handwritten piano accompaniment for the first system, including a (3) marking above the right hand.



Handwritten musical notation in G major with lyrics: *οὐδὲν καὶ αἰῶνι αἰῶνι*

Handwritten piano accompaniment for the second system, ending with a double bar line and repeat sign.

The image shows a handwritten musical score on page 9. The score is written on two staves. The top staff is a vocal line, and the bottom staff is a piano accompaniment line. The key signature is one flat (B-flat), and the time signature is common time (C). The vocal line consists of four notes: 'ri', 'rus', 'a', and 'vá'. The piano accompaniment consists of four chords: a triad of F, A, and C; a triad of F, A, and C with a horizontal line below the notes; a triad of F, A, and C with a horizontal line below the notes; and a triad of F, A, and C. The page is otherwise blank.