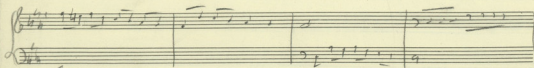
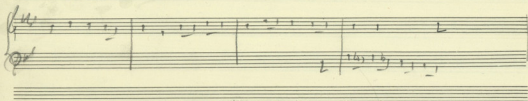
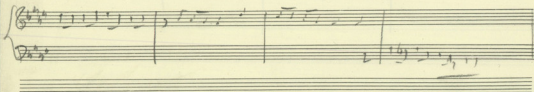
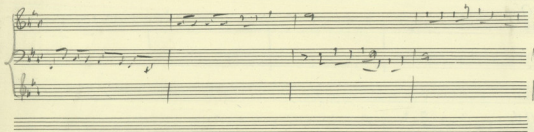
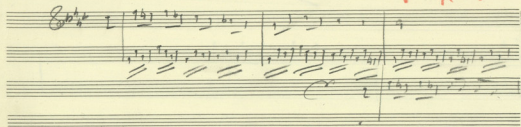
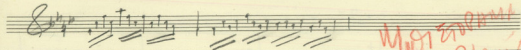


Μουσική Εργασία
Αβραάμ '68



Handwritten musical notation on a grand staff (treble and bass clefs). The key signature is two sharps (F# and C#), and the time signature is 4/4. The notation includes various note values, rests, and dynamic markings.

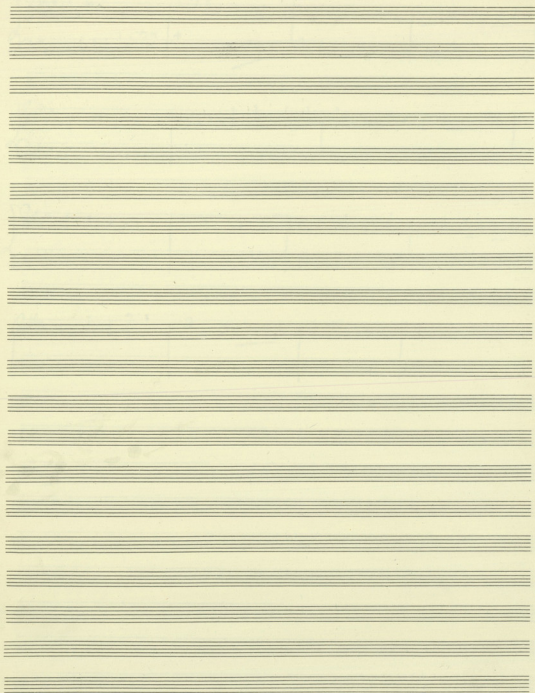
Handwritten musical notation on a grand staff. The key signature is two sharps (F# and C#), and the time signature is 4/4. The notation includes various note values, rests, and dynamic markings.

Handwritten musical notation on a grand staff. The key signature is two sharps (F# and C#), and the time signature is 4/4. The notation includes various note values, rests, and dynamic markings.

Handwritten musical notation on a grand staff. The key signature is two sharps (F# and C#), and the time signature is 4/4. The notation includes various note values, rests, and dynamic markings.

Empty musical staves on the page, consisting of ten sets of five-line staves.

A series of 20 blank musical staves arranged vertically on a page. Each staff consists of five horizontal lines. The staves are evenly spaced and occupy the majority of the page's vertical space.



ΜΟΥΣΙΚΗ ΑΡΧΗ '68

A handwritten musical score for guitar, consisting of 12 staves. The notation is written in black ink on aged paper. The score begins with a treble clef and a key signature of one sharp (F#). The first staff contains a complex melodic line with many sixteenth and thirty-second notes. The second staff features a bass line with a prominent bass clef and a 'basso continuo' style. The third staff continues the melodic line with some rests. The fourth staff has a bass line with a '5' written below it, possibly indicating a fifth fret. The fifth staff continues the melodic line. The sixth staff has a bass line with a '9' written below it. The seventh staff continues the melodic line. The eighth staff has a bass line with a '4' written below it. The ninth staff continues the melodic line. The tenth staff has a bass line with a '5' written below it. The eleventh staff continues the melodic line. The twelfth staff has a bass line with a '5' written below it. The notation includes various rhythmic values, accidentals, and dynamic markings.

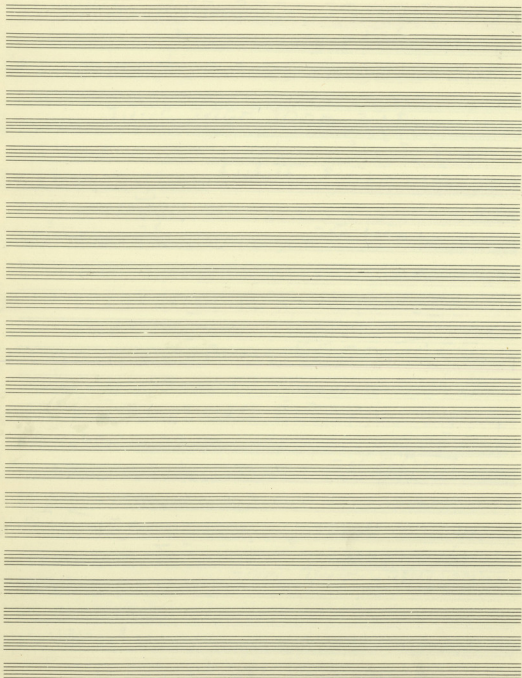
Handwritten musical notation on a five-line staff, featuring a treble clef, a key signature of one flat (B-flat), and a 4/4 time signature. The notation includes a series of notes and rests, with some notes marked with accents and a '2' below the staff.

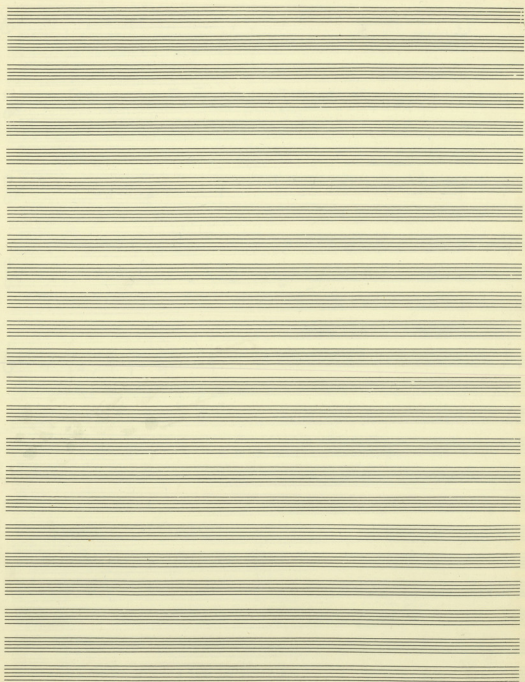
Handwritten musical notation on a five-line staff, featuring a treble clef, a key signature of one flat (B-flat), and a 4/4 time signature. The notation includes a series of notes and rests, with some notes marked with accents.

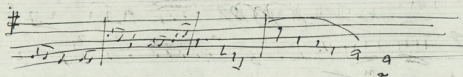
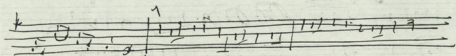
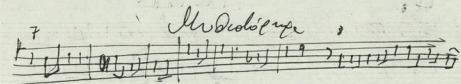
Handwritten musical notation on a five-line staff, featuring a treble clef, a key signature of one flat (B-flat), and a 4/4 time signature. The notation includes a series of notes and rests, with some notes marked with accents.

Handwritten musical notation on a five-line staff, featuring a treble clef, a key signature of one flat (B-flat), and a 4/4 time signature. The notation includes a series of notes and rests, with some notes marked with accents.

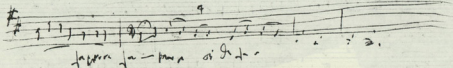
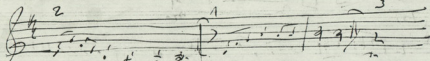
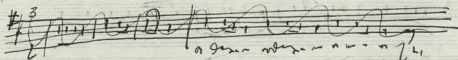
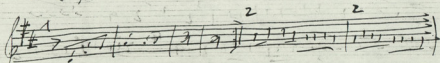
Handwritten musical notation on a five-line staff, featuring a treble clef, a key signature of one flat (B-flat), and a 4/4 time signature. The notation includes a series of notes and rests, with some notes marked with accents.







Kr (76)



Handwritten musical score on ten staves. The notation includes treble and bass clefs, a key signature of one sharp (F#), and a 3/4 time signature. The score is heavily annotated with numbers (1, 2, 3, 4, 5, 6, 7, 8, 9, 10, 11, 12) and various musical symbols such as slurs, ties, and dynamic markings. The notation is dense and appears to be a complex piece of music, possibly a study or a composition. The handwriting is in black ink on aged paper.

1E' (66)

o i mpa rija sa i va stitje xristu rje to a va — sa —
 ov i va stitje xristu rje to a va — sa —

pa sa i xristu pisanu ayanos — kai ta fa a i xristu

k xristu xristu xristu xristu xristu xristu xristu xristu

Ta xristu xristu xristu xristu xristu xristu xristu xristu

Ka xristu xristu xristu xristu xristu xristu xristu xristu

Ka xristu xristu xristu xristu xristu xristu xristu xristu

10. I. 68
A 66120

ΦΟΥΛΑΚΕ
ΑΒΕΡΡΟΦ

10. I. 92

Handwritten musical notation on a five-line staff. The notation includes a treble clef, a key signature of two sharps (F# and C#), and a common time signature (C). The notes are mostly quarter and eighth notes. There is a large, dark scribble on the left side of the staff, partially obscuring the beginning of the piece.

Handwritten musical notation on a five-line staff, continuing from the previous system. It features a treble clef, a key signature of two sharps, and a common time signature. The notation consists of quarter and eighth notes. There is a large, dark scribble on the left side of the staff, partially obscuring the beginning of the piece.

Handwritten signature and page number: *Handwritten signature* (99) 21

2 3

Handwritten musical notation for the first system, featuring a treble and bass clef staff with notes and rests.

2 4

Handwritten musical notation for the second system, including a grand staff with piano and forte dynamics.

Handwritten musical notation for the third system, showing piano and forte dynamics.

Handwritten musical notation for the fourth system, featuring a large bracketed section with piano and forte dynamics.

Handwritten musical notation for the fifth system, including piano and forte dynamics.

Handwritten musical notation for the sixth system, including piano and forte dynamics.

WAGNER: Die Walküre Act 1, Scene 1

Handwritten musical score for voice and piano. The score is written on ten systems of five-line staves. The first system includes a vocal line with a melodic line and a piano accompaniment with chords and rhythmic markings. The second system continues the piano accompaniment with various chordal textures. The third system shows the vocal line with lyrics: "MICH SEHST DU FAHREN FAHREN MICH RE". The fourth system continues the vocal line with lyrics: "SIEHST DU ROSEN ROSTEN". The fifth system shows the vocal line with lyrics: "SIEHST DU ROSEN ROSTEN". The sixth system shows the vocal line with lyrics: "SIEHST DU ROSEN ROSTEN". The seventh system shows the vocal line with lyrics: "SIEHST DU ROSEN ROSTEN". The eighth system shows the vocal line with lyrics: "SIEHST DU ROSEN ROSTEN". The ninth system shows the vocal line with lyrics: "SIEHST DU ROSEN ROSTEN". The tenth system shows the vocal line with lyrics: "SIEHST DU ROSEN ROSTEN".

Μουσική ΠΑΜΑ

Handwritten musical notation on a five-line staff, featuring various rhythmic values and melodic lines.

Handwritten musical notation on a five-line staff, including the labels "FA", "Sto", and "do".

Handwritten musical notation on a five-line staff, showing complex rhythmic patterns.

Handwritten musical notation on a five-line staff, with labels "FA", "MID", "FA", and "Sto".

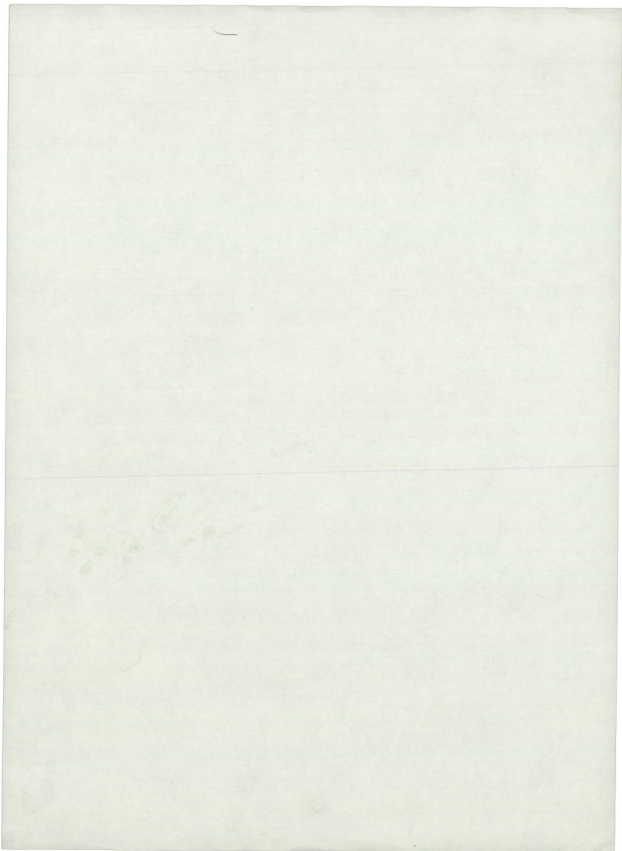
Handwritten musical notation on a five-line staff, including a large bracketed section.

~~ΠΑΡΚ
 8213920
 8217369
 8225747~~

Handwritten musical notation on a five-line staff, showing a dense melodic line.

Handwritten musical notation on a five-line staff, with various rhythmic markings.

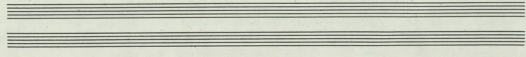
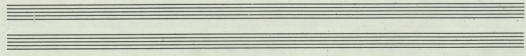
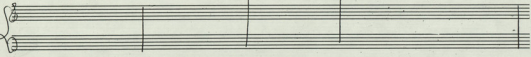
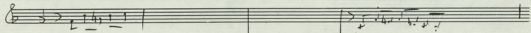
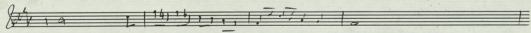
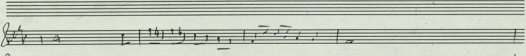
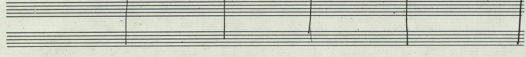
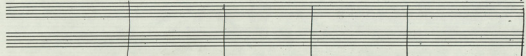
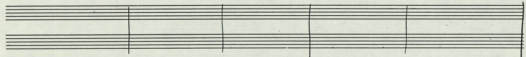
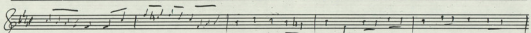
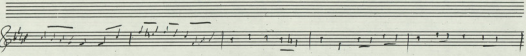
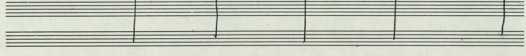
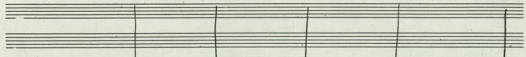
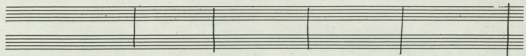
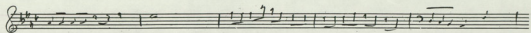
Handwritten musical notation on a five-line staff, showing a continuation of the melodic line.



Handwritten musical score system 1. It consists of five staves. The top staff is a vocal line in G major, 4/4 time, with lyrics written below it. The second staff is a piano accompaniment. The third and fourth staves are empty. The fifth staff contains the handwritten text "ΑΡΧΗ 1968" in large letters.

Handwritten musical score system 2. It consists of five staves. The top staff is a vocal line in G major, 4/4 time, with lyrics written below it. The second staff is a piano accompaniment. The third staff is a bass line with the word "στανδον" written above it. The fourth and fifth staves are empty.

Handwritten musical score system 3. It consists of five staves. The top staff is a vocal line in G major, 4/4 time, with lyrics written below it. The second staff is a piano accompaniment. The third and fourth staves are empty. The fifth staff contains some handwritten notes and symbols.



WALTZOPHANA 1868

Handwritten musical notation on a single staff with treble clef and a key signature of one sharp (F#). The notation includes a treble clef, a sharp sign, and a time signature of 3/4. The notes are: G4, A4, B4, C5, B4, A4, G4, F#4, E4, D4. Above the staff, the notes are labeled: Si mi RE. There is a fermata over the final note.

Handwritten musical notation on a single staff with treble clef. The notes are: G4, A4, B4, C5, B4, A4, G4, F#4, E4, D4. Above the staff, the notes are labeled: Sa Do Sa Do si la Sa.

Handwritten musical notation on a single staff with treble clef. The notes are: G4, A4, B4, C5, B4, A4, G4, F#4, E4, D4. Above the staff, the notes are labeled: la Do Si mi la MI la MI.

Handwritten musical notation on a single staff with treble clef. The notes are: G4, A4, B4, C5, B4, A4, G4, F#4, E4, D4. Above the staff, the notes are labeled: Si mi RE Sa.

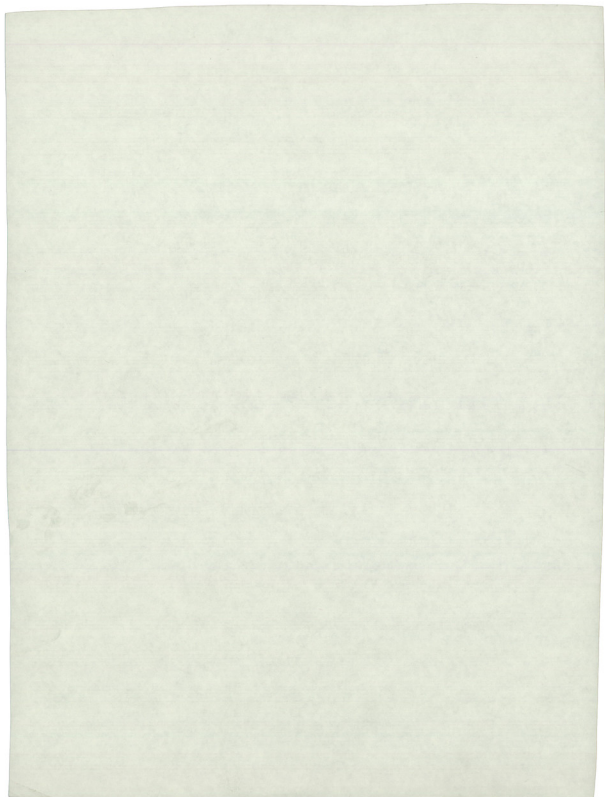
Handwritten musical notation on a single staff with treble clef. The notes are: G4, A4, B4, C5, B4, A4, G4, F#4, E4, D4. Above the staff, the notes are labeled: Sa Do si la Si la Si.

Handwritten musical notation on a single staff with treble clef. The notes are: G4, A4, B4, C5, B4, A4, G4, F#4, E4, D4. Above the staff, the notes are labeled: la Si Si la Si Do Sa Sa la Si.

Handwritten musical notation on a single staff with treble clef. The notes are: G4, A4, B4, C5, B4, A4, G4, F#4, E4, D4. Above the staff, the notes are labeled: Sa Sa RE mi RE ma RE si mi.

Handwritten musical notation on a single staff with treble clef. The notes are: G4, A4, B4, C5, B4, A4, G4, F#4, E4, D4. Above the staff, the notes are labeled: si mi RE la si mi Sa Do.

Handwritten musical notation on a single staff with treble clef. The notes are: G4, A4, B4, C5, B4, A4, G4, F#4, E4, D4. Above the staff, the notes are labeled: RE Do Sa mi Do la Si mi.



LA si LA si LA RO MI LA si MI

W. J. ZUPANA
 ABOUT '68

LA^{7#} RE⁵ FA⁷ SI⁷ RE MI KOL⁷ LA⁷ SI⁷ RE MI

MUSICIENNA

ΒΕΡΓΙΝΟΣ

Φούκος Ηρώσης 40
1908

8^m

So Do So Do si la So

la Do si

la Mi la

la Mi la Mi

So Do So Do si

Handwritten musical notation, first system. Treble clef, key signature of one sharp (F#). The melody is written on a single staff with lyrics: *la si la si la si*. The piano accompaniment is on a grand staff (treble and bass clefs).

Handwritten musical notation, second system. Treble clef, key signature of one sharp. The melody is written on a single staff with lyrics: *la si do sol sol la si do sol re*. The piano accompaniment is on a grand staff.

Handwritten musical notation, third system. Treble clef, key signature of one sharp. The melody is written on a single staff with lyrics: *mi re mi re si si mi si mi*. The piano accompaniment is on a grand staff.

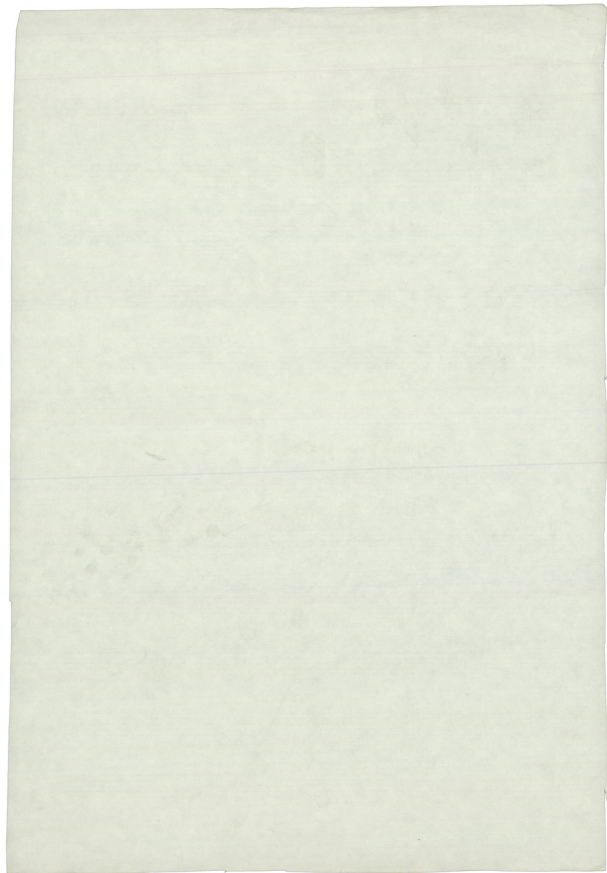
Handwritten musical notation, fourth system. Treble clef, key signature of one sharp. The melody is written on a single staff with lyrics: *re la si mi do do do do do do do*. The piano accompaniment is on a grand staff.

Handwritten musical notation, fifth system. Treble clef, key signature of one sharp. The melody is written on a single staff with lyrics: *re do sol mi do la si mi do do do do do do mi re mi*. The piano accompaniment is on a grand staff.

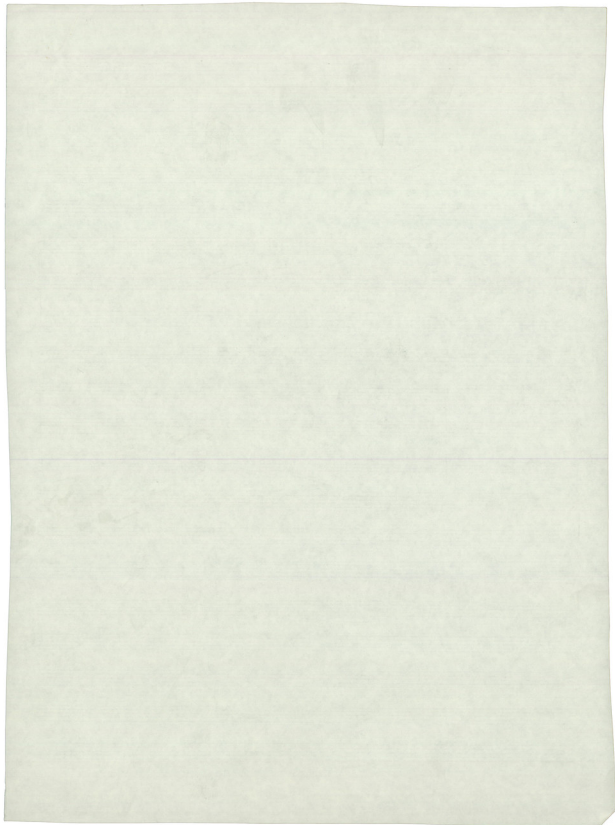
1967

ΔΟΥΛΑΚΗΣ
 ΑΣΕΡΟΠ
 1967-68

(Σημειώθηκε
 ως πρόγραμμα
 του Διευθυντή Φυλακίων
 ως Σχολική
 αι Χείρα
 Νεοεργασίας)



RE Son si Do RE Do si la si mi



mi RE mi RE Son si Do RE Do Son la si mi

mi la si

la mi la mi si mi

Violoncello

