

⑥

καὶ τὴν ἐκείνην ἡμέραν [Παρασκευή]

- 31 -

Handwritten musical score for the first system. The vocal line (treble clef) begins with a rest, followed by a melodic phrase. The piano accompaniment (grand staff) consists of chords in the right hand and a bass line in the left hand. The lyrics "καὶ τὴν ἐκείνην ἡμέραν" are written above the vocal line. A tempo marking "Allegretto" is present.

Handwritten musical score for the second system. The vocal line continues with the lyrics "καὶ τὴν ἐκείνην ἡμέραν". The piano accompaniment continues with chords and a bass line. A tempo marking "Allegretto" is present.

Handwritten musical score for the third system. The vocal line concludes with the lyrics "καὶ τὴν ἐκείνην ἡμέραν". The piano accompaniment concludes with chords and a bass line. A tempo marking "Allegretto" is present.

ΣΤΟ ΔΙΣΤΕ ΠΙΣΤΕ ΦΑΙΝΑ ΚΑΙ ΠΕ ΠΟ ΔΙΑ

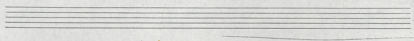
The first system of the handwritten musical score consists of three staves. The top staff is a vocal line in G-clef with a treble clef and a key signature of one sharp (F#). The lyrics are written below the notes. The middle staff is a piano accompaniment in G-clef with a treble clef, and the bottom staff is in C-clef with a bass clef. The music is written in a style characteristic of early 20th-century Greek folk or church music.

ΚΑΙ ΒΑΡΥΤΗΤΟΣ ΤΗΝ ΔΑΤΕ ΜΕ ΚΙΕ

The second system of the handwritten musical score consists of three staves. The top staff is a vocal line in G-clef with a treble clef and a key signature of one sharp (F#). The lyrics are written below the notes. The middle staff is a piano accompaniment in G-clef with a treble clef, and the bottom staff is in C-clef with a bass clef. The music continues from the first system.

ΜΕΝΑΡΣΑ ΔΕΡ ΦΕΙ ΒΑ ΜΕ ΒΑΡΥΤΗΤΟΣ ΒΑΙ ΚΑ ΤΙ ΠΑΣΙ ΑΝΑΜΕΤΕ ΚΑΙ

The third system of the handwritten musical score consists of three staves. The top staff is a vocal line in G-clef with a treble clef and a key signature of one sharp (F#). The lyrics are written below the notes. The middle staff is a piano accompaniment in G-clef with a treble clef, and the bottom staff is in C-clef with a bass clef. The music concludes with a double bar line.



- 33 -

η εὐχὴ καὶ ἡ φα... ρι τῆς ἡμετέρας ἐκείνης ἡ ἡμετέρας

ἡ ἡμετέρας ἐκείνης ἡ ἡμετέρας

ὁ ἡμετέρας ἐκείνης ἡ ἡμετέρας

-34-

This system contains a vocal line and piano accompaniment. The vocal line is written in a treble clef with a key signature of one flat and a 4/4 time signature. The lyrics are: "γνώρι- ο σα πα ρος τος - σιν κεφα ρη και η γαινη κεσα σιν". The piano accompaniment consists of a grand staff with chords in the right hand and a bass line in the left hand.

γνώρι- ο σα πα ρος τος - σιν κεφα ρη και η γαινη κεσα σιν

This system continues the musical score. The vocal line has lyrics: "yu xha + . + και τοιαν πα και τοιαν". There are plus signs above the notes in the vocal line. The piano accompaniment continues with chords and a bass line.

yu xha + . + και τοιαν πα και τοιαν

This system includes two first endings, each marked "I VOLTA". The vocal line has lyrics: "για ης ημε ρων ε va - ε va πω τα κωσ τος θα". The piano accompaniment continues with chords and a bass line.

για ης ημε ρων ε va - ε va πω τα κωσ τος θα

-35-

I

πρὸς τὸν Ἰωάννην ἀποκρίσεις — Ὁμ. πρὸς συντροφίαν Ὁμ. πρὸς συντροφίαν Ὁμ.

πρὸς συντροφίαν Ὁμ. εἰτε να βρω θάνατον ἢ ἄλλο πρὸς συντροφίαν Ὁμ.

ἤλιος ἄνακτα

