

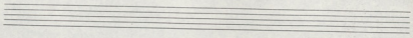




Handwritten musical score for the first system, featuring a vocal line and piano accompaniment. The lyrics are: "vay jus Avote puss - aai ja ba - kosa raja pitta sia es".

Handwritten musical score for the second system, featuring a vocal line and piano accompaniment. The lyrics are: "a jee van yu xi - - a va' tav e jo xaj uoi tu li".

Handwritten musical score for the third system, featuring a vocal line and piano accompaniment. The lyrics are: "darn ha a us va' xa ta ji o nei pi tau' h pan' mu tau tri".

















Handwritten musical score on page 35, system 1. The page is numbered "1" in the top left, "-5-" in the top center, and "35" in the top right. The score is written on four systems of two staves each. The notation includes notes, rests, and dynamic markings such as "p" (piano) and "f" (forte). There are also some handwritten annotations like "11" and "12" near the end of the first system. The paper shows signs of age and wear.

11 *qui tunc que*

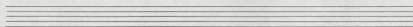


-6-

You saved me from the hands of the enemy

I have seen the sea and the mountains

I have seen the sea and the mountains





Εγὼ νεκρὸς ἦν καὶ ἡ ψυχή μου ἔξω ἦν ἀπὸ τοῦ σώματος μου· ἔζη οὖν τρεῖς ἡμέρας καὶ τρεῖς ἡμέρας ἐν τοῖς νεκροῖς, ἀλλὰ οὐκ ἔβλεπα τὸν Χριστὸν, ὅτι ἦν κρυφτός· ἀλλὰ ἔβλεπα τὸν Θεὸν τὸν πατέρα μου καὶ τὸν υἱὸν τοῦ Θεοῦ, ὁ ὢν ἰσὺς τοῦ πατρὸς, ὁ καταβὰς ἐκ τοῦ οὐρανοῦ καὶ ὁ ἐπιβὰς ἐπὶ τὸν νεκρὸν καὶ τὸν ζῶντα καὶ τὸν ἔχοντα ἐξουσίαν ἵνα ἁρπάξῃ τὸν θάνατον· ὁ καταβὰς ἐκ τοῦ οὐρανοῦ καὶ ὁ ἐπιβὰς ἐπὶ τὸν νεκρὸν καὶ τὸν ζῶντα καὶ τὸν ἔχοντα ἐξουσίαν ἵνα ἁρπάξῃ τὸν θάνατον.

ὅτι ἦν κρυφτός· ἀλλὰ ἔβλεπα τὸν Θεὸν τὸν πατέρα μου καὶ τὸν υἱὸν τοῦ Θεοῦ, ὁ ὢν ἰσὺς τοῦ πατρὸς, ὁ καταβὰς ἐκ τοῦ οὐρανοῦ καὶ ὁ ἐπιβὰς ἐπὶ τὸν νεκρὸν καὶ τὸν ζῶντα καὶ τὸν ἔχοντα ἐξουσίαν ἵνα ἁρπάξῃ τὸν θάνατον.

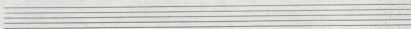
ὁ καταβὰς ἐκ τοῦ οὐρανοῦ καὶ ὁ ἐπιβὰς ἐπὶ τὸν νεκρὸν καὶ τὸν ζῶντα καὶ τὸν ἔχοντα ἐξουσίαν ἵνα ἁρπάξῃ τὸν θάνατον.



Εφαΐει και — και να — αιναίβουδα — δα — το

ἐρῆο βουνοῦ ἐρῆ — κτην — δα — δα — τας — τιν — ὄρ

ὄρ — τας — τας — ὡς — πετῶν — βετῶν — πα — ὁ — Ἰησὺς







ρε γω τε ποσ το γω υης τος οι κωυ κελυς — ρα νω γω εφοη σωυ

χη στο τωε κη στο υωυ κη σου ες ρα

ρα — ετ να ηε βα ει σωυα



Σ

τω τὰς τὰ νὰ κέ νο μου σὴ κὴ τί στον κὰ κὰ εὐ εὐ —

κὰ το κὰ δε πὰ τι κὰ κὸν ἦ τω το πρῶ το κὴ τὰν θὰ ρι βα το τὲ πω τὰς ο

τί τὸ γὰρ νο μου πο δε πὰ τι κὸν εὐ αὐ κὰ



41

τα σου τι το μυστικό σου ποδι σου τα βεστάματα σου

γιατί το έρωτάς εγώ σου κίβλο σου το πνεύμα καθαρό σου τα βεστάματα σου

δίψασμα σου βεστάματα σου και κεί ο τέτονος

ΠΙΣ ΠΕΡΙ (Andante) ⊕

⊕ Τραβήξτε γρηγορά [Pizzicato]



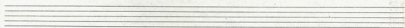
- 12 -

VII

à pi no uad pi - ym eí ja da - nad píe ton a  
 nad píe ton a

noú - hi vo - tis Awti pas sou nai - - tis  
 su - - sou

si - - Yus sou eí Sa tou éau to -







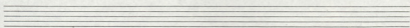
K1

-13-

μου θα ρύσῃ πο κούνη νόχ-τη τῆν πόηλας κέ- νο και νοσηλα

δαρ τῆς μομαί νού πῶς ηλα- ονς ὁ πού να ηλας κέ γὰ εἶ να

κῆρ - αὐ εἶ σα





5

③

-14-

^ Δόξα σοῦ

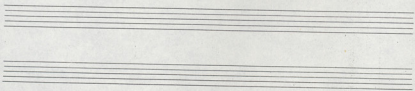
5

Choro

κτίστα ἰερωνία ἰερωνία θεοῦ καὶ ἀφ' ἡμῶν ἰδοὺ τοῦρα ἵνα δεῖ'

Κεῖνο

Κεῖνο



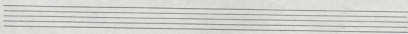
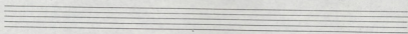


μου τῶν ἀδελφῶν μου διὰ τὴν ἀγάπην τοῦ θεοῦ.

καὶ τοῦ εὐαγγελίου ἐν τῷ κόσμῳ καὶ ἐν τῇ ἐκκλησίᾳ.



15







Σε νεβλάδα-

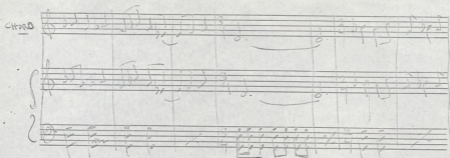
CH.

Με πόσην γοητεία δὲ φημι σὺν ἡμῶν ἐπιπέσοις δεῦθε ἐφ' ἡμῶν νιπότε τῶν εἰ κα-

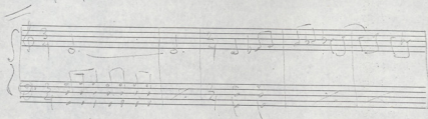
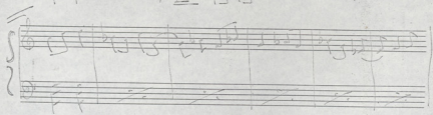
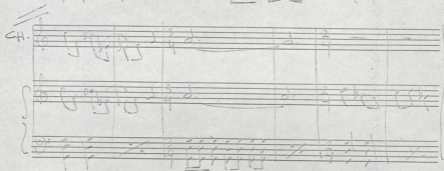
CH.



Citroo

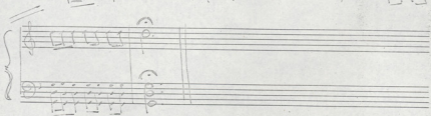
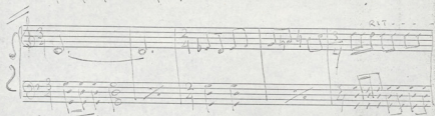
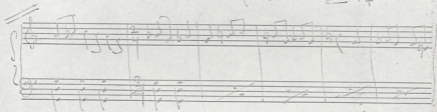
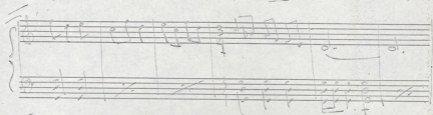
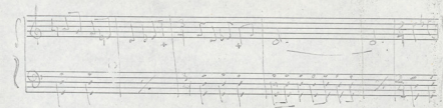


Ch.





-19-











-21-

à κέ πια τ'να κέ σα στ'ν γαβ'τι κ'νι μίσ-σ'τα αί-βα σου'

Τεσσαρί

εί π'ρα σου τ'ν'



-22-

ve - a naφ δια τον κοινωσταντο vio - ου α ju va ρi ja

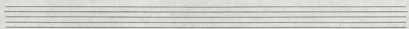
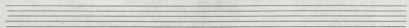
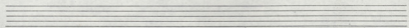
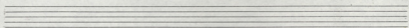
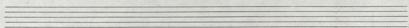
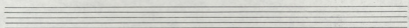
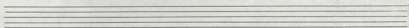
ve a naφ δια τον κοινωσταντο ευχισαται οτι οη και κρι σω



B

23

εἰς τὴν πατρίδα τῶν ἁγίων σου τῶν οὐρανῶν





⑤

-24-

" Πάντα σε ἤγα ῥα ἰσχυρά "

Handwritten musical score for the first system. It consists of three staves: a vocal line in G major (one sharp) and 2/2 time, and two piano accompaniment staves. The lyrics are written below the vocal line.

Lyrics: πρὸς βῶν δά τε ναὸν κὺ βουβέτου ἤλιο πὰ νῦ αἰτῶν

Handwritten musical score for the second system, labeled "CHORO" on the left. It consists of three staves: a vocal line in G major and 2/2 time, and two piano accompaniment staves. The lyrics are written below the vocal line.

Lyrics: πρὸς βῶν δά τε ναὸν κὺ βουβέτου ἤλιο πὰ νῦ

Handwritten musical score for the third system. It consists of three staves: a vocal line in G major and 2/2 time, and two piano accompaniment staves. The lyrics are written below the vocal line.

Lyrics: ἀνοτὸν κὺ βῶν δά τε κὺ γη γενεῆ ρόδα του βῶ

⑥





-25-

Θραση - παση

ch.

κωσ δε τε κω θυνητα βι τω βα

Θη προς παθ διανα - δε βα πα κωρα

ca.

δια κωτα αη κυ



-26-

I VOLTA.

II VOLTA



Handwritten musical score for the first system. It consists of four staves: a vocal line (treble clef), a piano line (treble clef), a guitar line (treble clef), and a bass line (bass clef). The lyrics are written below the vocal line.

Lyrics: *hos taiva ve bei o h' jus*

There is a circled symbol at the end of the first staff, and a double bar line with repeat dots is present at the end of the system.

Handwritten musical score for the second system. It consists of four staves: a vocal line (treble clef), a piano line (treble clef), a guitar line (treble clef), and a bass line (bass clef). The lyrics are written below the vocal line.

Lyrics: *jo va ma te- en dos va tou epa'is te an tu- pas tu*

The system ends with a double bar line and repeat dots.

Two empty musical staves, one for a piano part and one for a guitar part, located at the bottom of the page.



Handwritten musical score on aged paper, featuring a vocal line with Greek lyrics and a piano accompaniment. The score is divided into two systems.

**System 1:**

- Vocal Line (C.H.):** The lyrics are "σπαρξτε εν δεσ μη κε- ο να να του θραξτε". The melody is written in a treble clef with a key signature of one sharp (F#).
- Piano Accompaniment:** The right hand features a melodic line with some trills and grace notes. The left hand provides a harmonic accompaniment with chords and single notes.

**System 2:**

- Vocal Line (C.H.):** The lyrics are "αν' το - γαι να - Δε σραϊν μηα κια ται να τα ο πο". The melody continues in the same treble clef and key signature.
- Piano Accompaniment:** The right hand continues with a melodic line, and the left hand provides a steady harmonic accompaniment.

Below the second system, there are several empty musical staves, indicating the end of the written music on this page.



-28-

Handwritten musical score on aged paper. The score consists of a vocal line and piano accompaniment. The vocal line is written on a single staff with a treble clef and contains the lyrics: "au ha + toi 28sp voi ha". The piano accompaniment is written on two staves (treble and bass clefs) and includes various musical notations such as chords, arpeggios, and dynamic markings. The score is divided into systems by double bar lines. There are some handwritten annotations and corrections throughout the piece. At the bottom of the page, there are several empty musical staves.





M

-29-

C F

Handwritten musical score for the first system. It consists of three staves. The top staff is heavily scribbled out with black ink. The middle staff contains a vocal line with two phrases marked "I volta" and "II volta". The bottom staff contains a piano accompaniment with rhythmic markings. A circled cross symbol is located below the first staff.

C F

Handwritten musical score for the second system. It consists of three staves. The top staff contains a vocal line with the Greek lyrics "φοι ηου" and "ετ' προς α - εσφραδ - εσφραδισθησ' ε τω". The middle staff contains a piano accompaniment with some scribbles. The bottom staff contains a piano accompaniment with rhythmic markings.



13

Handwritten musical score for the first system. It includes a vocal line with lyrics in Greek, a piano accompaniment, and a bass line. The lyrics are: "ΕΣ ΗΕΤΑ ΚΩ ΤΗ ΤΟΥ ΣΥ ΝΡΟΣ ΟΥ- ΡΑΤΣ ΜΗ ΨΑΔΙΑ-".

Handwritten musical score for the second system. It includes a vocal line with lyrics in Greek, a piano accompaniment, and a bass line. The lyrics are: "ΤΟΥ ΚΑΘ ΤΟ ΔΙ ΓΕ Α ΣΥΨ ΨΑΙ ΚΩ".

Three sets of empty musical staves, likely intended for a second system of music or a different instrument part.

4 8



⑥

καὶ τὴν ἐκείνην ἡμέραν [Παρασκευή]

- 31 -

Handwritten musical score for the first system. The vocal line (treble clef) begins with a rest, followed by a melodic phrase. The piano accompaniment (grand staff) consists of chords in the right hand and a bass line in the left hand. The lyrics "καὶ τὴν ἐκείνην ἡμέραν" are written above the vocal line. A tempo marking "Allegretto" is present above the vocal line.

Handwritten musical score for the second system. The vocal line continues with the lyrics "καὶ τὴν ἐκείνην ἡμέραν". The piano accompaniment continues with chords and a bass line. A tempo marking "Allegretto" is present above the vocal line.

Handwritten musical score for the third system. The vocal line concludes with the lyrics "καὶ τὴν ἐκείνην ἡμέραν". The piano accompaniment concludes with chords and a bass line. A tempo marking "Allegretto" is present above the vocal line.



ΣΤΟ ΔΙΣΤΗΚΙΟΤΕ ΦΑΡΜΑΚΑΙ ΤΕ ΠΟ ΔΙΑ

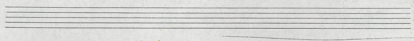
The first system of the handwritten musical score consists of three staves. The top staff is a vocal line in G-clef with a treble clef, containing the lyrics "ΣΤΟ ΔΙΣΤΗΚΙΟΤΕ ΦΑΡΜΑΚΑΙ ΤΕ ΠΟ ΔΙΑ". The middle staff is a piano accompaniment in G-clef with a treble clef, and the bottom staff is in C-clef with a bass clef. The music is written in a simple, folk-like style with some accidentals and rests.

ΚΑΙ ΒΑΡΜΑΚΙΟΝ ΑΓΙΟΥ ΒΑΝ ΔΑΤΕ ΜΕ ΚΙΕ

The second system of the handwritten musical score consists of three staves. The top staff is a vocal line in G-clef with a treble clef, containing the lyrics "ΚΑΙ ΒΑΡΜΑΚΙΟΝ ΑΓΙΟΥ ΒΑΝ ΔΑΤΕ ΜΕ ΚΙΕ". The middle staff is a piano accompaniment in G-clef with a treble clef, and the bottom staff is in C-clef with a bass clef. The music continues with similar notation to the first system.

ΜΕΒΑΡΜΑΚΙΟΝ ΚΑΙ ΤΑ ΜΕΒΑΡΜΑΚΙΟΝ ΒΑΝ ΚΑ ΤΙ ΠΑΝΑΓΙΑΝΤΟΝ ΚΑΙ

The third system of the handwritten musical score consists of three staves. The top staff is a vocal line in G-clef with a treble clef, containing the lyrics "ΜΕΒΑΡΜΑΚΙΟΝ ΚΑΙ ΤΑ ΜΕΒΑΡΜΑΚΙΟΝ ΒΑΝ ΚΑ ΤΙ ΠΑΝΑΓΙΑΝΤΟΝ ΚΑΙ". The middle staff is a piano accompaniment in G-clef with a treble clef, and the bottom staff is in C-clef with a bass clef. The music concludes with a final cadence.











-34-

This system contains the first three measures of the piece. The vocal line is written in a treble clef with a key signature of one flat and a 4/4 time signature. The lyrics are: "γνώρι- ο σα πα ρος τος - σιν κεφα ρη και η γαινη κεσα σιν". The piano accompaniment consists of a left hand with a steady bass line and a right hand with chords.

γνώρι- ο σα πα ρος τος - σιν κεφα ρη και η γαινη κεσα σιν

This system contains the next three measures. The vocal line continues with the lyrics: "yu xha + . + και τοιαν πα και τοιαν". There are plus signs above the notes in the first measure. The piano accompaniment continues with similar chordal textures.

yu xha + . + και τοιαν πα και τοιαν

This system contains the final three measures. The vocal line has the lyrics: "για ης ημερων ε va - ε va πω τα κινε τος θα". Above the second and third measures, the word "VOLTA" is written. The piano accompaniment concludes with a final chord.

για ης ημερων ε va - ε va πω τα κινε τος θα



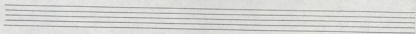
-35-

I

πρὸς τὸν Ἰωάννην ἀποκρίσεις — Ὁμ. πρὸς συντροφίαν Ὁμ. πρὸς συντροφίαν Ὁμ.

πρὸς συντροφίαν Ὁμ. εἰτε να θυμὸν θάνατον ἰδέσθαι περὶ κατὰ γινῆ δ

ἤλιος ἄνεκα





(7)

How Sweetly Sings the Love Song

Handwritten musical score for the first system. It features a vocal line in treble clef and piano accompaniment in bass clef. The lyrics are: "οι κω νει ο ρεσος εσ jes nou".

Handwritten musical score for the second system. It features a vocal line in treble clef and piano accompaniment in bass clef. The lyrics are: "ο πατρις πα-τηρ ονι νε-α τω".

Handwritten musical score for the third system. It features a vocal line in treble clef and piano accompaniment in bass clef. The lyrics are: "νει κει ου πα α'".

Four empty musical staves at the bottom of the page.





-37-

Handwritten musical score for two systems, labeled "C. I." and "C. II.".

**System 1 (C. I.):**

- Vocal line:  $\tau\omicron$  —  $\psi\iota\omicron$  —  $\acute{\alpha}\tau\omicron\alpha$  —  $\rho\iota$
- Lyrics:  $\mu\iota$   $\mu\upsilon\sigma\tau\epsilon\omicron\varsigma$   $\nu\epsilon\omicron\sigma$

**System 2 (C. II.):**

- Vocal line:  $\rho\acute{\omicron}$   $\gamma\omicron\varsigma$   $\nu\epsilon\iota$   $\delta\acute{\rho}\alpha$   $\delta\alpha\tau\alpha$   $\theta\alpha$  —  $\gamma\epsilon$

The score includes piano accompaniment for both systems, with various musical notations such as notes, rests, and dynamic markings.



-38-

Choro

στη νε-α του εφο-δα

H

vou kai eufraà to-φιο η τσα-ρι

Choro

η ηας αφης τα ηι πα-οα ηε α πο Cap-ηα ηρ Spa



-39-

Handwritten musical score for the first system, featuring a vocal line and piano accompaniment. The vocal line includes the lyrics "παι - παι". The piano accompaniment consists of two staves with chords and rhythmic markings.

Handwritten musical score for the second system, featuring a vocal line and piano accompaniment. The vocal line includes the lyrics "για να κερδισ πα να κερδισ ηρωικα χωματα - μας". The piano accompaniment consists of two staves with chords and rhythmic markings.

Handwritten musical score for the third system, featuring a vocal line and piano accompaniment. The vocal line includes the lyrics "να ξερα οσον αντοχα σε τω το γρηγορως ημει των παι". The piano accompaniment consists of two staves with chords and rhythmic markings.



-40-

πρα --- σι ο πω --- βα θυκία πότα πρωτο βραχ

The first system of the handwritten musical score consists of three staves. The top staff is a vocal line with the lyrics "πρα --- σι ο πω --- βα θυκία πότα πρωτο βραχ". The middle and bottom staves contain piano accompaniment with various chordal textures and rhythmic patterns.

Αρρι ο να θυτι ο να δε ραση κη δωδεκατη χριση

The second system of the handwritten musical score consists of three staves. The top staff is a vocal line with the lyrics "Αρρι ο να θυτι ο να δε ραση κη δωδεκατη χριση". The middle and bottom staves contain piano accompaniment with various chordal textures and rhythmic patterns.

δια --- τη ηνωτη να ορ ηι συ κιν

The third system of the handwritten musical score consists of three staves. The top staff is a vocal line with the lyrics "δια --- τη ηνωτη να ορ ηι συ κιν". The middle and bottom staves contain piano accompaniment with various chordal textures and rhythmic patterns.









-42-

Handwritten musical score for two systems. The first system is labeled "CHORO" and the second "CH.". The lyrics are in Greek.

**System 1 (CHORO):**

Lyrics: *ὦν πρὸς πατρίαν καὶ βέβορον γῆν*

**System 2 (CH.):**

Lyrics: *ναυὸς τῶν ἡμετέρων βεβόρον*

The score includes vocal lines and piano accompaniment with various musical notations such as notes, rests, and dynamic markings.

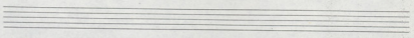
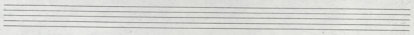






Handwritten musical score for the first system. It consists of three staves. The top staff is a vocal line with lyrics: "va tu e pa' sou he an'to dai ka on pa' rhi xepi a mi no". The middle staff is a piano accompaniment for the right hand, and the bottom staff is for the left hand. The music is written in a common time signature.

Handwritten musical score for the second system. It also consists of three staves. The top staff has lyrics: "pa dia - dia vas pa' rhi si". The middle and bottom staves are piano accompaniment for the right and left hands respectively. The notation continues with similar rhythmic patterns as the first system.





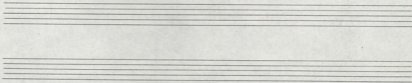


Σ

-45-

Musical score for the first system. The vocal line (top staff) is in treble clef with a key signature of one sharp (F#) and a 3/4 time signature. It contains the lyrics "pios tve" with a "dim." marking above the final notes. The piano accompaniment consists of two staves: the right hand in treble clef and the left hand in bass clef, both with a 3/4 time signature. The piano part features a complex texture with many beamed sixteenth notes and chords.

Musical score for the second system. The vocal line (top staff) is in treble clef with a key signature of one sharp (F#) and a 3/4 time signature. It contains the lyrics "fa" with a "mf." marking below. The piano accompaniment consists of two staves: the right hand in treble clef and the left hand in bass clef, both with a 3/4 time signature. The piano part features a complex texture with many beamed sixteenth notes and chords.





⑧

-46-

"Καὶ ἔπειτα ἀπὸς ἡγουμένων" [Ραβ. οὐδ' αὖ]

Εὐαγγέλιον ἐπιφανῶς καὶ τὸ εὐαγγέλιον ἡμεῖς ἐπιφανῶς

ἡμεῖς ἐπιφανῶς καὶ τὸ εὐαγγέλιον ἡμεῖς ἐπιφανῶς καὶ τὸ εὐαγγέλιον ἡμεῖς ἐπιφανῶς

ἐπιφανῶς καὶ τὸ εὐαγγέλιον ἡμεῖς ἐπιφανῶς καὶ τὸ εὐαγγέλιον ἡμεῖς ἐπιφανῶς



Handwritten musical score for the first system. The vocal line is in G major and 4/4 time, with lyrics: "πά σα-εί πά σα-εί ανω γω χρισμα εγεννηθη". The piano accompaniment consists of chords in the left hand and a rhythmic pattern in the right hand.

Handwritten musical score for the second system. The vocal line continues with lyrics: "νη ανω γω γεννηθη να των ολων υος του θεου α αμα-νηως". The piano accompaniment continues with chords and a rhythmic pattern.

Handwritten musical score for the third system. The vocal line continues with lyrics: "ναχα τα ρωματα του Ηραν και τα ρωματα του Ιουδα ου-πα χρισ να". The piano accompaniment continues with chords and a rhythmic pattern.

Four empty musical staff lines at the bottom of the page.







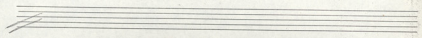


-49-

Handwritten musical score for the first system. It includes a vocal line with lyrics in Greek and piano accompaniment.

Vocal line: *Ἐπευ Ja - ωι Σας - Ἐπευ Ja - ου τρῶ φοι*

Accompaniment: Piano part with multiple staves, including a grand staff (treble and bass clefs) and a separate staff for the right hand.



Handwritten musical score for the second system, continuing the piece.

Vocal line: *CH* (Clef) *Ἐπευ Ja - ωι Σας - Ἐπευ Ja - ου τρῶ φοι*

Accompaniment: Piano part with multiple staves, including a grand staff and a separate staff for the right hand.



