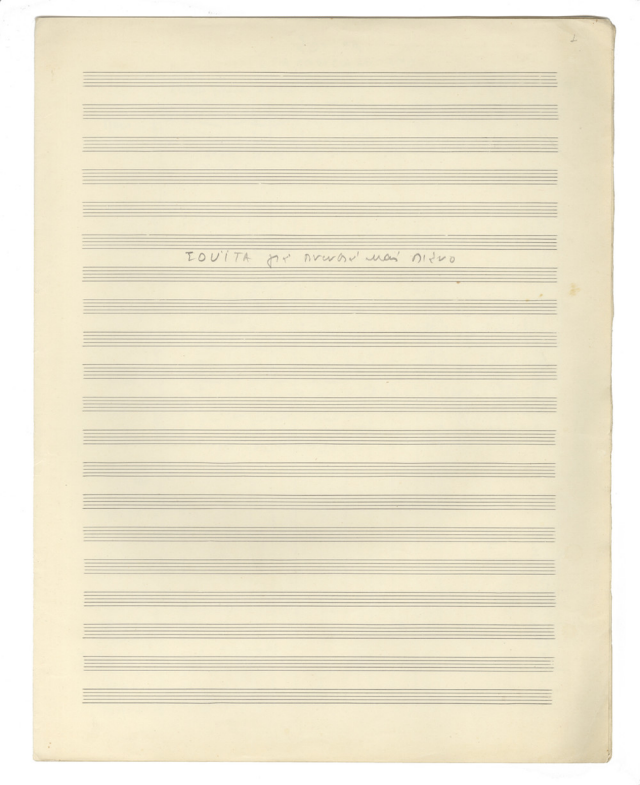
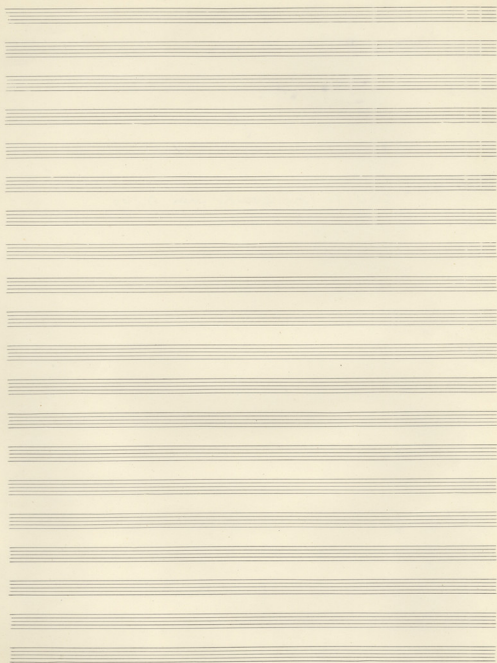


1



TOVITA per armonia mai visto



ΣΟΥΙΤΑ - ΓΙΑ ΠΙΝΕΥΣΤΑ ΚΑΙ ΜΙΑΝΟ -

2

Allegro Vivace $\text{♩} = 152$ Max. $\text{♩} = 200$ *apud* 5

Piano *FF pesante* ①

Piccolo *FF pesante*

2 Flauti

Soboe

Contr. Angl. *FF pesante*

2 Clar. in LA

Clarinete bas. LA

2 Fagotti

Contrabassini

Saxofono alto Mib

4 Corni FA

2 Trombe Sib

I. 2 Trombe

III. Tromba E tuba

Timpani *nata si in dop.*

Cassa -
Piatto -
Trippi -

I
F
HF
HF
HF
HF

cze - ce -

Piano

Piccolo

2 Flauto

2 Oboe

2 Clarinetto

2 Clarinetto in Bb

2 Fagotto

2 Trombe

2 Trombe in Sib

4 Corni

2 Trombe in Sib

2 Trombe

III Tromba Tubi

Muta pos in Sib
FA in Sol

- *ndo* (2) *ccc* *cc-* *ndob*

Handwritten musical score for the first system. It includes a piano part (left) and a violin part (right). The piano part features complex rhythmic patterns with many sixteenth and thirty-second notes. The violin part has a melodic line with similar rhythmic complexity. Dynamic markings include *mf*. Above the staves, there are handwritten annotations: *ccc*, *cc-*, and *ndob*. A circled number '2' is written above the first measure of the piano part.

(2) *ccc* *ccc* *cc*

Handwritten musical score for the second system. It continues the piano and violin parts. The piano part has several measures with rests. The violin part continues with complex rhythmic patterns. Dynamic markings include *mf* and *ff*. Above the staves, there are handwritten annotations: *ccc*, *ccc*, and *cc*. A circled number '2' is written above the first measure of the piano part.

(2) *ff*

Handwritten musical score for the third system. The piano part has a *ff* marking. The violin part has a *f* marking. The piano part has several measures with rests. The violin part continues with complex rhythmic patterns. A circled number '2' is written above the first measure of the piano part.

(2)

Handwritten musical score for the fourth system. It shows the continuation of the piano and violin parts. A circled number '2' is written above the first measure of the piano part.

Poco meno mosso

3

Piano

Musical score for Piano, featuring dense chordal textures and melodic lines in both hands.

Poco meno mosso

3

Pic
El
OB
C. Angl
Cl
Cb. Sax
Fag.
C. Fag.

Musical score for Woodwinds and Brass instruments, including Piccolo, Flute, Oboe, Clarinet in A, Bass Clarinet, Saxophone, Bassoon, and Contrabassoon. Includes dynamic markings like *subito p* and *rit.*

Poco meno mosso

3

Sax in Mb
Tuba
Tromb.
Tromb.

Musical score for Horns and Tuba, including Saxophone in Music, Trombones, and Tubas. Includes dynamic markings like *sostenuto* and *subito, sostenuto*.

3

Solo Tuba

Muta Sif in D \sharp
Sol in Sol \sharp

Empty musical staff at the bottom of the page.

A single empty musical staff with a circled number 4 above it.

Musical staff with handwritten notes and markings. A circled number 4 is above the staff. The notes are in a treble clef and include various dynamics like *mf* and *al*. There are also some handwritten annotations like *mf* and *al* written vertically.

Musical staff with handwritten notes and markings. It continues the piece with various dynamics and markings.

Musical staff with handwritten notes and markings.

Musical staff with handwritten notes and markings. It includes dynamics like *mf* and *al*.

Musical staff with handwritten notes and markings. The word "sordines" is written in the middle of the staff. Dynamics like *mf*, *al*, and *ff* are present.

An empty musical staff at the bottom of the page.

Tempo I

6

Piano

Pic

Fl

Ob

Cl.

Cl.

B. Cl.

Trng

CF

Sax

4 Cr.

Tr.

Tuba

Tuba

Temp

trump

Muta Sol# 19 Sol#

ff

Piano

Musical staff for Piano, featuring complex chordal textures and melodic lines with various articulations and dynamics.

Fl. III
Fl.

Musical staff for Flute III, showing melodic passages with slurs and dynamic markings.

OB

Musical staff for Oboe, containing melodic lines with slurs and dynamic markings.

CA

Musical staff for Clarinet A, featuring melodic lines with slurs and dynamic markings.

CL

Musical staff for Clarinet B, containing melodic lines with slurs and dynamic markings.

BCL

Musical staff for Bass Clarinet, showing melodic lines with slurs and dynamic markings.

Fg

Musical staff for Bassoon, containing melodic lines with slurs and dynamic markings.

C.Fg

Musical staff for Contrabassoon, showing melodic lines with slurs and dynamic markings.

Sax

Musical staff for Saxophone, containing melodic lines with slurs and dynamic markings.

Cor

Musical staff for Cor Anglais, showing melodic lines with slurs and dynamic markings.

Tu

Musical staff for Trombone, containing melodic lines with slurs and dynamic markings.

2 Tr. Bass

Musical staff for 2nd Trombone Bass, showing melodic lines with slurs and dynamic markings.

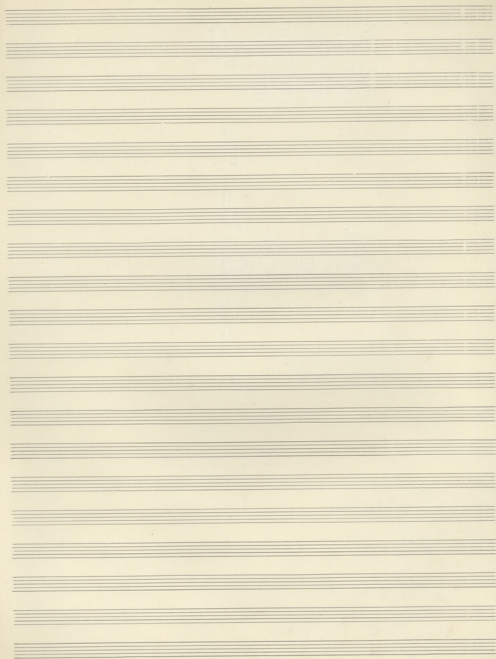
Tromboni

Musical staff for Trombones, containing melodic lines with slurs and dynamic markings.

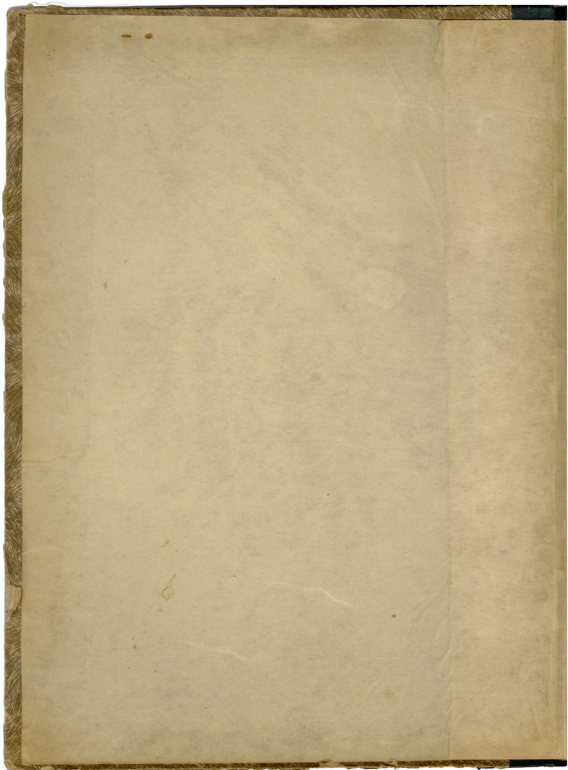
Temp

Musical staff for Timpani, showing rhythmic patterns and dynamic markings.

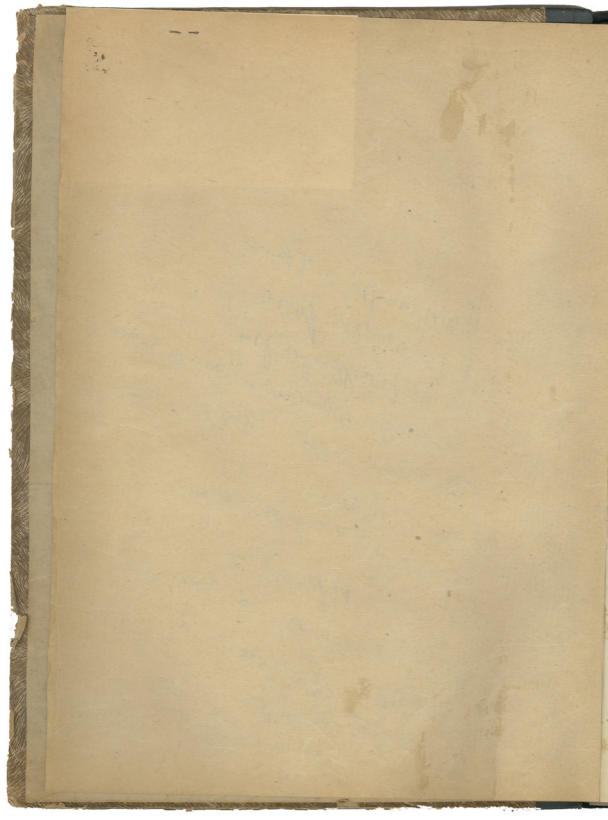
Handwritten musical score on ten staves. The notation includes notes, rests, and dynamic markings such as *ff* and *mf*. The score is densely written, particularly in the first four staves, and appears to be a sketch or a working draft of a piece. The notation includes various musical symbols, including stems, beams, and slurs, along with some handwritten annotations and corrections.



Μ. Γ. ΘΕΟΔΩΡΑΚΗΣ
° ΣΟΧΙΤΑ
— ΠΑ ΓΡΕΚΣΤΑ ΚΑΙ
914 No —



Apokrifan pui di TRIO.
 O F. Winkler, for piano.
 vi di poygpeyo pui
 oexhiope NERON - Hans-M. Kpouo
 To amava and Musica (1947-8)
 Masi a NERON
 Masi di vore ni began -
 Teyun o NERON
 Su NERON ni di susyoun
 Oasi ni sep avos
 Ewa amir
 avirteyedo



Allegro Vivace $\text{♩} = 152$

ΣΟΥΙΤΑ ΓΙΑ ΠΝΕΥΣΤΑ ΚΑΙ ΠΙΑΝΟ

Μη Θεωρείται

I

Pianoforte

2 Flauti
et flauto picc

Oboe

Contrafagotti

2 Clarineti

Clarinetti bassi

2 Fagotti

Contrabasso

Saxofono alto

4 Corni

Trombe

I-II Tromboni

III Tromboni
e Tubi

Timpani

Molto Si in Doz

OP. 111 - 123456789101112

Handwritten musical score for a symphony, featuring the following instruments and parts:

- Panof.** (Piano): Includes a circled '1' at the beginning and dynamic markings like *mf*.
- 2 Flauti** (Flutes)
- 2 Oboe** (Oboes)
- Contrap.** (Contrabass)
- 2 Clarini** (Clarinets)
- Clarin. in Bb** (Clarinet in B-flat)
- 2 Fagotti** (Bassoons)
- Contrab.** (Double Bass)
- Sax. in Bb** (Saxophone in B-flat)
- Violini** (Violins): Includes dynamic marking *mf*.
- Viola in Sib** (Viola in C)
- 2 Violoncelli** (Violoncellos)
- 2 Trombe in Sib** (Trumpets in C)
- Tromba in Sib** (Trumpet in C)
- Tromboni** (Trombones): Includes dynamic marking *mf*.
- Tubor.** (Tuba)

The score is written on a grid of staves with various musical notations, including notes, rests, and dynamic markings such as *mf*, *sfz*, and *sf*. Some parts include performance instructions like *solo* and *mf*.

cel - 3 - ce - ndo

2

Handwritten musical score for guitar, consisting of multiple staves. The score includes complex rhythmic patterns, chords, and melodic lines. The lyrics "cel - 3 - ce - ndo" are written above the first system, and "cel - ce - ndo" is written below the second system. A circled number "2" is present in the upper right corner. The score is written in blue ink on aged paper.

Lyrics: cel - 3 - ce - ndo

Lyrics: cel - ce - ndo

Dynamic markings: *f*, *pp*, *f*

Performance instructions: *Muto*, *D₂ 14 5/8*, *F# 14 5/8*

Piano Piano

Musical notation for Piano, consisting of two staves with treble and bass clefs. The music features complex chordal textures with many accidentals (sharps, flats, naturals) and dynamic markings such as *mf* and *f*.

2 Flauto Piccolo

Musical notation for 2 Flauto Piccolo, featuring a single staff with a treble clef and a key signature of one flat. The notation includes dynamic markings like *mf*.

2 Oboe 2 Flauto

Musical notation for 2 Oboe 2 Flauto, featuring a single staff with a treble clef and a key signature of one flat. The notation includes dynamic markings like *mf*.

Conti Oboe

Musical notation for Conti Oboe, featuring a single staff with a treble clef and a key signature of one flat. The notation includes dynamic markings like *mf*.

Clarin Contralto

Musical notation for Clarin Contralto, featuring a single staff with a bass clef. The notation includes dynamic markings like *mf*.

Clarin 2 Clarinet Lt

Musical notation for Clarin 2 Clarinet Lt, featuring a single staff with a treble clef and a key signature of one flat. The notation includes dynamic markings like *mf* and *sf*.

Fagotto 2 Fagotto Lt

Musical notation for Fagotto 2 Fagotto Lt, featuring a single staff with a bass clef and a key signature of one flat. The notation includes dynamic markings like *mf*.

Contro 2 Fagotto

Musical notation for Contro 2 Fagotto, featuring a single staff with a bass clef and a key signature of one flat. The notation includes dynamic markings like *mf*.

Sax Contralto

Musical notation for Sax Contralto, featuring a single staff with a bass clef and a key signature of one flat. The notation includes dynamic markings like *mf*.

Clarin Contralto

Musical notation for Clarin Contralto, featuring a single staff with a bass clef and a key signature of one flat. The notation includes dynamic markings like *mf*.

Tramite Sib

Musical notation for Tramite Sib, featuring a single staff with a bass clef and a key signature of one flat. The notation includes dynamic markings like *mf*.

2 Trombe 2 Trombe

Musical notation for 2 Trombe 2 Trombe, featuring a single staff with a treble clef and a key signature of one flat. The notation includes dynamic markings like *mf*.

Tuba

Musical notation for Tuba, featuring a single staff with a bass clef and a key signature of one flat. The notation includes dynamic markings like *mf*.

Timpani

Musical notation for Timpani, featuring a single staff with a treble clef and a key signature of one flat. The notation includes dynamic markings like *mf*.

8va -----)

ce ce no

ce ce no

ce ce no

Muta Sib in D#
Sib in Sol#

Subito p
Solo Tuba

pp sostenuto

P. Piano
 2F 2 Flauti
 2. Oboe
 C. Clarinet
 2C 2 Clarinet in LA
 Bass Clarinet in LA
 2Fagotti
 C. Contrabasso
 Sax in A/B
 4 Corni
 2 Trombe in Sib
 3 II Trombe
 III Tromba e Tubo
 Timpani

Musical score for a symphony orchestra, page 6. The score includes parts for Piano, 2 Flutes, Oboe, Clarinet, 2 Clarinets in LA, Bass Clarinet in LA, 2 Bassoons, Contrabass, Saxophone in A/B, 4 Horns, 2 Trumpets in B-flat, 3 II Trumpets, III Trumpet and Tuba, and Timpani. The music is written on staves with various notes, rests, and dynamic markings like 'mf' and 'sostenuto'.

4

Handwritten musical notation on a grand staff. The upper staff contains a melodic line with notes, rests, and dynamic markings including *mf*, *f*, and *ad*. The lower staff contains a bass line with notes and rests.

Handwritten musical notation on a grand staff. The upper staff continues the melodic line with notes and rests. The lower staff contains a bass line with notes and rests. Dynamic markings include *mf* and *p*.

Handwritten musical notation on a grand staff. The upper staff contains notes and rests, with a section labeled *scandinos*. The lower staff contains notes and rests. Dynamic markings include *mf*, *f*, *ad*, *ar*, and *FF*. A section in the lower staff is marked *sol III*.

Tempo primo

- 8 -

⑥

Piano

FF

Flauti

Oboe

Clarineti

I FF

II

Violini I

Violini II

Violoncelli

I

II

FF

Sax in Bb

Coro

Violini III

Violini IV

Violoncelli III

Violoncelli IV

FF

Truppa

FF

Nota Solista

Handwritten musical notation for the first system, including a circled number 7 and dynamic markings like *mf*.

Handwritten musical notation for the first system. It consists of two staves. The upper staff has a circled number '7' above it. The lower staff has a dynamic marking 'mf' and some notes with slurs. There are also some handwritten annotations above the notes.

Handwritten musical notation for the second system, including dynamic markings like *mf* and *And. Cant.*

Handwritten musical notation for the second system. It consists of two staves. The upper staff has a dynamic marking 'mf' and some notes with slurs. The lower staff has a dynamic marking 'mf' and some notes with slurs. There is also a handwritten annotation 'And. Cant.' above the notes.

Handwritten musical notation for the third system, including dynamic markings like *mf* and *Sans*.

Handwritten musical notation for the third system. It consists of two staves. The upper staff has a dynamic marking 'mf' and some notes with slurs. The lower staff has a dynamic marking 'mf' and some notes with slurs. There is also a handwritten annotation 'Sans' above the notes.

8

Piano *pesante*

Flauti *mf pesante*

Oboe *mf pesante*

Clarinetto *mf pesante*

Fagotto *mf pesante*

Contrabbasso *mf pesante*

Sassi (C) *mf pesante*

Coro *mf pesante*

Trombe *mf pesante*

Trombi *mf pesante*

Tubi *mf pesante*

Timpani

crescendo

Handwritten musical score on aged paper, featuring multiple staves of music. The score includes various musical notations such as notes, rests, and dynamic markings. A circled number '9' is present at the top of the first system. The notation is dense and includes complex rhythmic patterns and accidentals.

Dynamic markings include *mf* (mezzo-forte) and *sol* (solo). A section of the score is marked with a circled '9' and a 'p' (piano) dynamic. The notation includes various accidentals (sharps, flats, naturals) and complex rhythmic patterns.

At the bottom right, there are additional markings: *sol*, *mf*, *Tiboni*, and *mf*. The score concludes with a series of notes on a single staff, marked with *mf*.

Piano

Flauti

Oboe

Clarin

Bass Cl.

Fag.

O Fag.

Sax. Alt.

Cori

Tromb.

Franty

II. tromb.

Temp.

Handwritten musical score for the first system, consisting of six staves. The notation is dense and includes various musical symbols such as notes, rests, and dynamic markings. The first staff begins with a treble clef and a key signature of one sharp (F#). The music is written in a style characteristic of early 20th-century manuscript notation. The first two staves are grouped by a brace on the left. The third and fourth staves are also grouped by a brace. The fifth and sixth staves are grouped by a brace. The notation includes many accidentals and dynamic markings like 'f' and 'p'.

Handwritten musical score for the second system, consisting of four staves. The notation is complex and includes many accidentals and dynamic markings. The first staff begins with a treble clef and a key signature of one sharp (F#). The second staff begins with a bass clef and a key signature of one flat (Bb). The third staff is labeled 'Tuba' and begins with a bass clef and a key signature of one flat (Bb). The fourth staff begins with a bass clef and a key signature of one flat (Bb). The notation includes many accidentals and dynamic markings like 'f' and 'p'. The music is written in a style characteristic of early 20th-century manuscript notation.

11

Handwritten musical score for a band, featuring staves for Piano, Flaut, ab, Chm, Cl, Fag, Sax, Cor, Tr, Trombi, Tub., and Tim. The score includes various musical notations such as notes, rests, and dynamic markings like 'unis' and 'ad'. The score is written on a single page with a page number '-14-' at the top and a circled '11' in the upper right. The instruments are listed on the left side of the page. The notation is dense and includes many accidentals and dynamic markings.

This page of handwritten musical notation, page 15, features a complex arrangement of staves. The notation includes various rhythmic values, accidentals, and dynamic markings such as accents and slurs. The music is organized into systems, with some staves containing multiple lines of notes. The paper shows signs of age, including some staining and wear at the edges.

12 poco meno mosso

Piano

Handwritten musical notation for the piano part, featuring dense chordal textures in the left hand and melodic lines in the right hand.

Fl

Handwritten musical notation for the flute part, including dynamic markings such as *pp* and *pp*.

ob

Handwritten musical notation for the oboe part, including dynamic markings such as *pp* and *pp*.

Clareg

Handwritten musical notation for the clarinet part.

Cl

Handwritten musical notation for the clarinet part, including dynamic markings such as *pp*.

Fag

Handwritten musical notation for the bassoon part, including dynamic markings such as *pp*.

Sax

Handwritten musical notation for the saxophone part.

Cor

Handwritten musical notation for the cor part.

Tu

Handwritten musical notation for the trumpet part.

Tubini

Handwritten musical notation for the trumpet part, including dynamic markings such as *pp*.

Tub

Handwritten musical notation for the tuba part, including dynamic markings such as *pp*.

Tm

Handwritten musical notation for the tom-tom part.

(13)

Handwritten musical notation for the first system. It consists of two staves. The top staff has a treble clef and contains notes with dynamic markings *pp* and *mf*. The bottom staff has a bass clef and contains notes with dynamic markings *pp* and *mf*.

Handwritten musical notation for the second system. It consists of two staves. The top staff has a treble clef and contains notes with dynamic markings *pp*. The bottom staff has a bass clef and contains notes with dynamic markings *pp*.

Handwritten musical notation for the third system. It consists of two staves. The top staff has a treble clef and contains notes with dynamic markings *mf* and *f*. The bottom staff has a bass clef and contains notes with dynamic markings *f* and *mf*.

Handwritten musical notation for the fourth system. It consists of two staves. The top staff has a treble clef and contains notes with dynamic markings *p*. The bottom staff has a bass clef and contains notes with dynamic markings *p*.

Handwritten musical notation for the fifth system. It consists of two staves. The top staff has a treble clef and contains notes with dynamic markings *pp* and *mf*. The bottom staff has a bass clef and contains notes with dynamic markings *pp* and *mf*.

Handwritten musical notation for the sixth system. It consists of two staves. The top staff has a treble clef and contains notes with dynamic markings *pp*. The bottom staff has a bass clef and contains notes with dynamic markings *pp*.

Tempo primo

Piano

Fl

ob

Cl

Fag

Saxo

Cromi

Tr

Tim

pesante

sempre marcato

Adagio

1 = 55

Handwritten musical score for Adagio, page 19. The score consists of 12 staves. The first staff is a grand staff with treble and bass clefs. The remaining 11 staves are single-line staves. The music is written in a key with one sharp (F#) and a common time signature (C). The score includes various dynamic markings such as 'pp', 'p', 'ff', and 'al'. There are also performance instructions like 'rit.' and 'cresc.' and some handwritten notes like 'gambale'. The right margin contains time signatures: 4/4, 2/4, 2/4, 2/4, 2/4, 2/4, 2/4, 2/4, 2/4, 2/4, 2/4.

Handwritten musical score for a symphony orchestra, page 20. The score is arranged in a standard orchestral layout with woodwinds, strings, and percussion.

Instrumentation and Parts:

- Piano:** Two staves with complex rhythmic patterns and dynamic markings.
- Flute (Fl):** One staff with a melodic line.
- Oboe (Ob):** One staff with a melodic line.
- Clarinet (Cl):** Two staves with melodic lines.
- Bassoon (Fag):** Two staves with melodic lines.
- Saxophone (Sax):** One staff with a melodic line.
- Cor:** Two staves with melodic lines.
- Trumpet (Tr):** One staff with a melodic line.
- Trombone (Trom):** Two staves with melodic lines.
- III Trumpets (III Tr):** One staff with a melodic line.
- Timpani (Timp):** One staff with rhythmic patterns.

Key Features and Markings:

- Tempo/Character:** *cantabile* (written under the Clarinet part).
- Dynamic Markings:** *mf* (mezzo-forte) appears in several places, including under the Clarinet and Bassoon parts.
- Performance Instructions:** *dim* (diminuendo) is written above the Cor part.
- Rehearsal Markers:** Roman numerals I, II, III, and IV are used to mark specific sections of the score.
- Time Signatures:** The score is primarily in 3/4 time, with some changes indicated by the numbers 3 and 4.