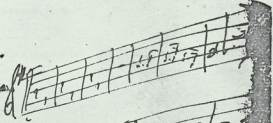


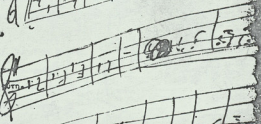
13

Ἔνα ἕσος κλέρες.

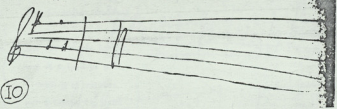
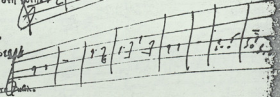
Ἔνα ἕσος κλέρες  
ἦνε κι ἔρχοντασ ἀπὸ χῆρα,  
γιὰ τὸ Παλαμῶρες,  
τὸ Βιανῶρ καὶ τὸ λιρὸ Πάρι.



Ἰὸν ἔχρηστο, τὸν κλέρη  
τὸ χωρὶς τὴν ἄλφρα,  
μὲ τὴ μῦτη τὴ μεγάλη  
ποὺ τοὺς ἔχει μὲτ' αὐτῆ



Με' χα τῶσος κλέρες,  
ὅς καὶ μὲνον ἀπὸ χωρὶς  
ὅς μ' ἄρα λαβῆι,  
ὅς ὅς μ' ἔνισα ὁ κτ' ἔρα.



10