

«ΑΥΣΙΣΤΡΑΤΗ»
ΤΕΤΑΡΤΟ ΣΤΑΣΙΜΟ: Η ΣΥΜΦΙΛΙΩΣΗ

ΧΟΡΟΙ ΓΡΑΙΩΝ - ΓΕΡΟΝΤΩΝ:

Αγαπητοί θεατές
δεν τόχω κατά νου
για συνανθρώπους
να πούμε ποτέ
κακό κανενού!
Καλό θα λέω, καλό θα κάνω,
καλός θα γίνω!
(καλά θα τρώω,
καλά θα πίνω!)

Γιατί -

ήρθε η Ειρήνη!
ΗΡΘΕ Η ΕΙΡΗΝΗ!
(Ηρθε η Ειρήνη;)

Κι όποιος δανειστεί
μη χυρίσει πίσω
δεκάρα τσασιστή!
(Αν κανείς γελαστεί
πως θα γελαστώ
και θα του δανείσω!)
Κι ο ουρανός γελαστός,
κι από τώρα κι εμπρός
θάνατι φίλος κι ο εχθρός, -

Γιατί -

ήρθε η Ειρήνη!
ΗΡΘΕ Η ΕΙΡΗΝΗ!
(Ηρθε η Ειρήνη;)

REPORT OF THE COMMISSIONER OF THE GENERAL LAND OFFICE
FOR THE YEAR 1881

THE GENERAL LAND OFFICE
HAS THE HONOUR TO ACKNOWLEDGE
THE RECEIPT OF THE REPORT
OF THE COMMISSIONER OF THE
GENERAL LAND OFFICE
FOR THE YEAR 1881
AND TO STATE THAT THE
SAME HAS BEEN FORWARDED
TO THE SECRETARY OF STATE
FOR THE HOME DEPARTMENT
AND TO THE SECRETARY OF THE
TREASURY

IN WITNESS WHEREOF
I HAVE SIGNED THESE
OFFICIAL PAPERS
AT THE GENERAL LAND OFFICE
THIS 15TH DAY OF JANUARY
1882

Handwritten musical notation on a single staff with lyrics: *Et in Spiritu Sancto, qui ex Patre Filioque procedit. Qui cum Patre Filioque simul et co-*

Handwritten musical notation on a single staff with lyrics: *aequus, qui procedit de Patre Filioque, procedit et adoratur et conglorificatur. Qui locutus est per Prophetas.*

Handwritten musical notation on a single staff with lyrics: *Et qui ex Patre Filioque procedit. Qui cum Patre Filioque simul et co-*

Handwritten musical notation on a single staff with lyrics: *aequus, qui procedit de Patre Filioque, procedit et adoratur et conglorificatur. Qui locutus est per Prophetas.*

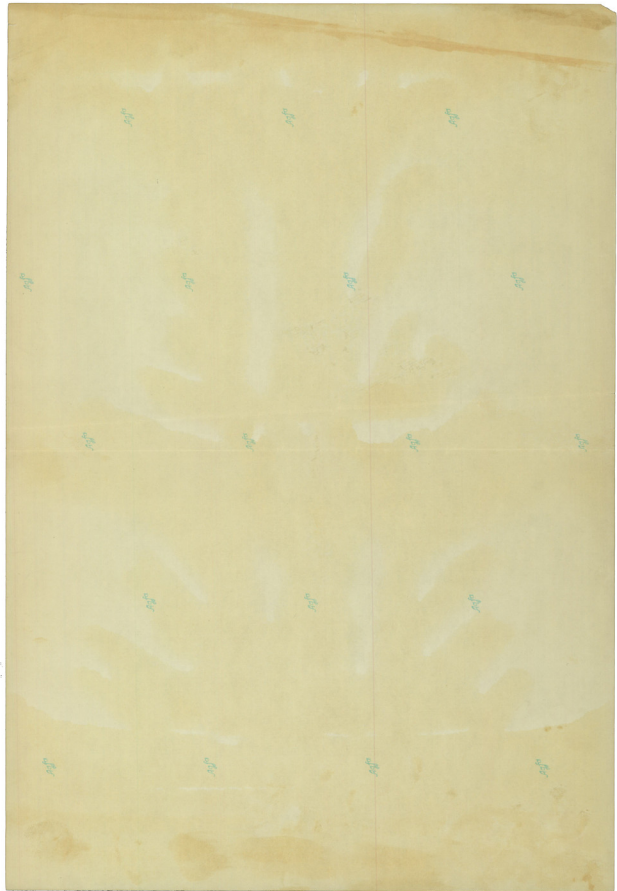
Handwritten musical notation on a single staff with lyrics: *Et qui ex Patre Filioque procedit. Qui cum Patre Filioque simul et co-*

Handwritten musical notation on a single staff with lyrics: *aequus, qui procedit de Patre Filioque, procedit et adoratur et conglorificatur. Qui locutus est per Prophetas.*

Handwritten musical notation on a single staff with lyrics: *Et qui ex Patre Filioque procedit. Qui cum Patre Filioque simul et co-*

Handwritten musical notation on a single staff with lyrics: *aequus, qui procedit de Patre Filioque, procedit et adoratur et conglorificatur. Qui locutus est per Prophetas.*

Handwritten musical notation on a single staff with lyrics: *Et qui ex Patre Filioque procedit. Qui cum Patre Filioque simul et co-*



Γ

I

ΤΟ ΣΠΟΡΟ

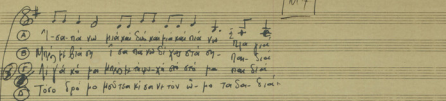
M5

M6

M7

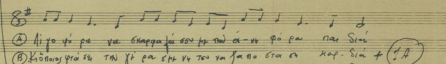
NEW I

①



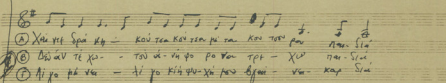
① A 1 - σα - να να κιό - ται σου να πα να σου να
 B Μην πι βιά - εις ί - σα θη - στί - χος σου οι - τια σου
 C Αι γέ - νη - τες να κη - ρύ - ξα - ξί - σεις να να - ρι - σι
 D Το έ - σπι - πο ηού - τας κι ε - ν - τος ω - πο το - σο - σι - νι

②



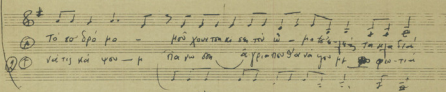
② A Αι γέ - νη - τες να να - ρι - σι - σεις να να - ρι - σι - σεις
 B Κιό - ται σου να να - ρι - σι - σεις να να - ρι - σι - σεις
 C Αι γέ - νη - τες να να - ρι - σι - σεις να να - ρι - σι - σεις
 D Μην πι βιά - εις ί - σα θη - στί - χος σου οι - τια σου

③



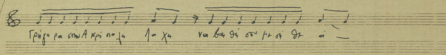
③ A Χέ - ρη - τες σου ηού - τας κι ε - ν - τος ω - πο το - σο - σι - νι
 B Αί - σι - νη - τες σου ηού - τας κι ε - ν - τος ω - πο το - σο - σι - νι
 C Αι γέ - νη - τες να να - ρι - σι - σεις να να - ρι - σι - σεις

④



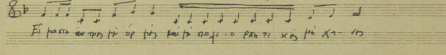
④ A Το έ - σπι - πο ηού - τας κι ε - ν - τος ω - πο το - σο - σι - νι
 B να να - ρι - σι - σεις να να - ρι - σι - σεις

II



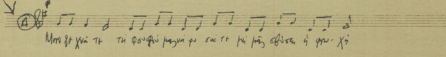
Σπύ - ρα σου Α - κρι - στέ - ρη - σου να να - ρι - σι - σεις να να - ρι - σι - σεις

III

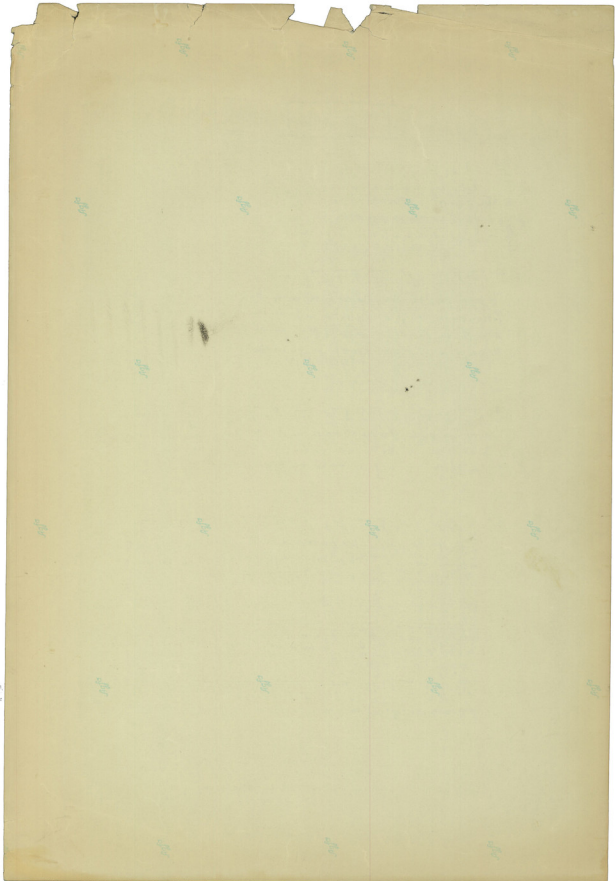


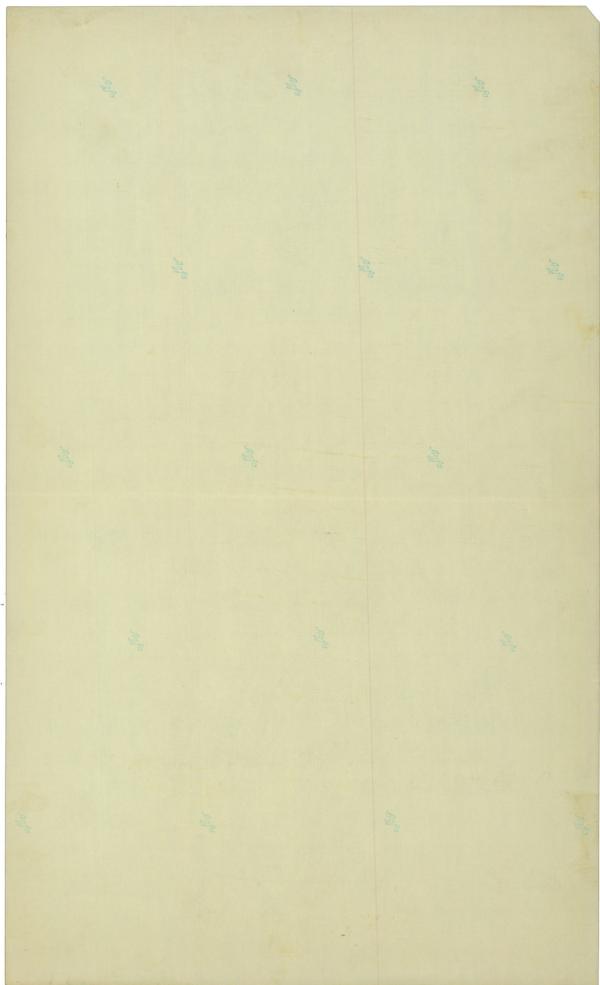
Εί - πας σου να να - ρι - σι - σεις να να - ρι - σι - σεις

IA



Μην πι βιά - εις ί - σα θη - στί - χος σου οι - τια σου





Νομ. I

I

ΠΡΩΤΟ ΧΟΡΙΚΟ

1

(A) 1-σα-να να κούκας σου και κούκας σου να
 (B) Μην πει βία σου τ' ουκ αν παρ' ει χαι στα συ-
 (C) Αι γα κ' ουκ αν κούκας σου και κούκας σου να
 (D) Τοσο ερα πο κούκας σου και κούκας σου να

2

(A) Αι γο φ' ουκ αν κούκας σου και κούκας σου να
 (B) Κούκας σου και κούκας σου να κούκας σου και κούκας σου να
 (C) Αι γο κ' ουκ αν κούκας σου και κούκας σου να
 (D) Μην κούκας σου και κούκας σου να

3

(A) Χαι κ' ουκ αν κούκας σου και κούκας σου να
 (B) Ουκ αν κούκας σου και κούκας σου να
 (C) Αι γο κ' ουκ αν κούκας σου και κούκας σου να

4

(A) Τοσο ερα πο κούκας σου και κούκας σου να
 (B) να κ' ουκ αν κούκας σου και κούκας σου να

II

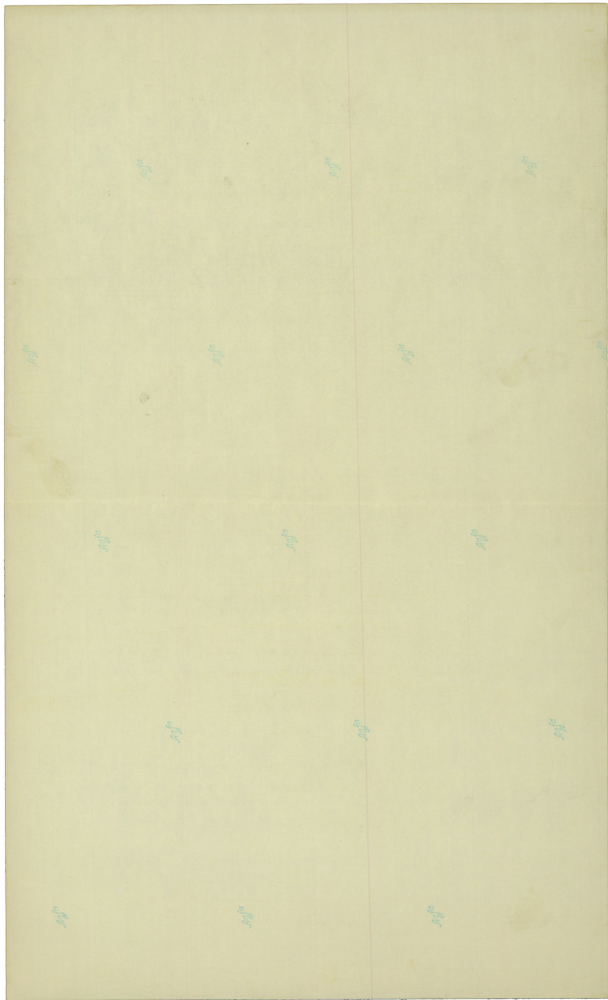
Γράφα σου Α και πο 1-α να να β' ουκ αν κούκας σου να

III

Ει παρ' ουκ αν κούκας σου και κούκας σου να

IA

Μην κούκας σου και κούκας σου να



M 8

ΠΡΩΤΟ ΧΟΡΟΣ (CANTATA)

Nai 2

(A)

Ανθρώποι 8/8 RE MI LA

Απανάσι θύνα καὶ ἰάχα· σὺν σὺν τῷ φῶ· τὸν οὐρανὸν καὶ τὴν γῆν·

8/8 RE LA MI

ὡς τὸν κτίοντα· Νικηθῆναι οὐ θέλοντα· τὸν πατέρα καὶ τὸν υἱόν·

8/8 SO LA MI LA MI MI LA

ὁ πατήρ καὶ ὁ υἱὸς· Νικηθῆναι οὐ θέλοντα· τὸν πατέρα καὶ τὸν υἱόν·

8/8 LA MI LA MI LA MI LA MI LA

ὁ πατήρ καὶ ὁ υἱὸς

(B)

Τουλάχιστον 8/8 SI SI SI

Ὁ ἐταρταρῆτα ἠὲ τὰ ἠὲ τὰ Νικηθῆναι

8/8 SI MI LA

Ὁ σὺν ἡμῶν καὶ ἡμῶν τῶν κατὰ τὸν κόσμον τῶν ἡμετέρων κατὰ τὸν κόσμον τῶν ἡμετέρων τῶν κατὰ τὸν κόσμον τῶν ἡμετέρων

8/8 RE MI RE MI RE MI MI

Ὁ σὺν ἡμῶν τῶν κατὰ τὸν κόσμον τῶν ἡμετέρων τῶν κατὰ τὸν κόσμον τῶν ἡμετέρων

(C)

8/8

Ὁ σὺν ἡμῶν τῶν κατὰ τὸν κόσμον τῶν ἡμετέρων τῶν κατὰ τὸν κόσμον τῶν ἡμετέρων

8/8

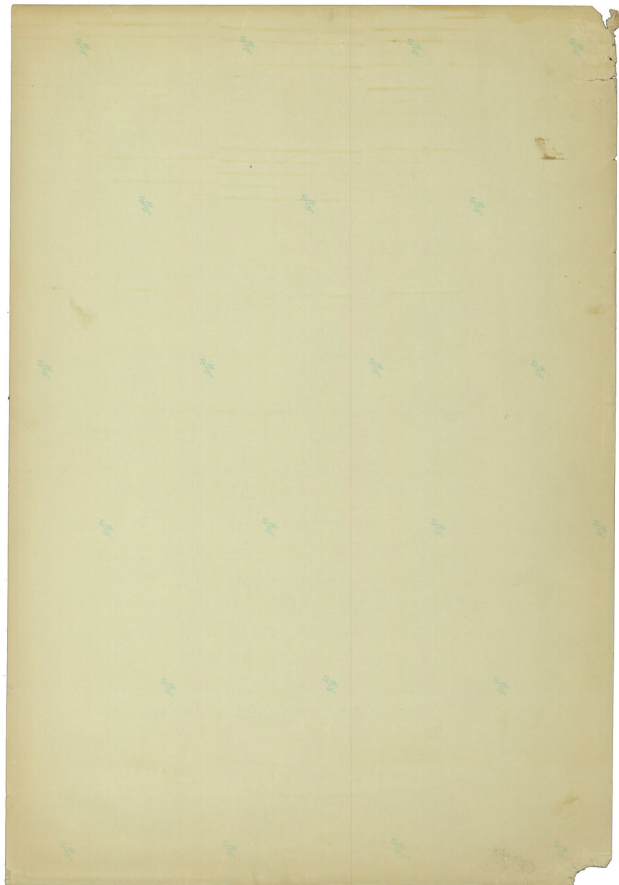
Ὁ σὺν ἡμῶν τῶν κατὰ τὸν κόσμον τῶν ἡμετέρων τῶν κατὰ τὸν κόσμον τῶν ἡμετέρων

6/8

Ὁ σὺν ἡμῶν τῶν κατὰ τὸν κόσμον τῶν ἡμετέρων τῶν κατὰ τὸν κόσμον τῶν ἡμετέρων

8/8

Ὁ σὺν ἡμῶν τῶν κατὰ τὸν κόσμον τῶν ἡμετέρων τῶν κατὰ τὸν κόσμον τῶν ἡμετέρων



1

M5
M6
M7

Coro
Klarinet
Tromboni
Saxofoni
Oboe
Fagotti

A B C A B C

M8 (A)

AKOPIATA
PUBBIA

RE RE mi LA LA LA

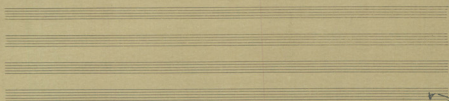
LA mi mi LA

LA (PUBBIA)
SI LA

LA LA LA LA LA LA LA LA

FINALE (A) (PUBBIA)

- AKOPIATA: 2 MANTOINI & KLABES
- PUBBIA: SAMPOLI, VCELLO, OBOE, FAGOTTI, KRATA



Handwritten musical score for a string quartet. The score is written on five staves. The instruments are labeled on the right: Violin I (Vcln I), Violin II (Vcln II), Viola, Violoncello (Vcllo), and Contrabasso (Cb). The music is in 2/2 time. The notes are mostly half notes and whole notes. There are some handwritten annotations like "5/4" and "3/4" between the staves. At the top right, there is a circled "1" and a scribble. At the bottom right, there is a box containing "M10" and another scribble.

Handwritten musical score for a piano accompaniment. The score is written on five staves. The instruments are labeled on the right: Piano (P), Mandolin (Mand), and Guitar (G). The music is in 2/2 time. The piano part has a steady eighth-note accompaniment. The mandolin and guitar parts have a rhythmic pattern. There are circled "SI" markings. At the bottom right, there is a box containing "M9" and another scribble.

Handwritten musical score for a piano accompaniment. The score is written on five staves. The instruments are labeled on the right: Piano (P), Mandolin (Mand), and Guitar (G). The music is in 2/2 time. The piano part has a steady eighth-note accompaniment. The mandolin and guitar parts have a rhythmic pattern. There are circled "SI" markings. At the bottom right, there is a box containing "M9" and another scribble.

(5)

M11A

Piano (A) (contra M11)

Amor 8/16 2

Amor 8/16

M12 MAXH

Amor Amor

(A) 1 2 3 4 5 6

(B) 1 2 3 4

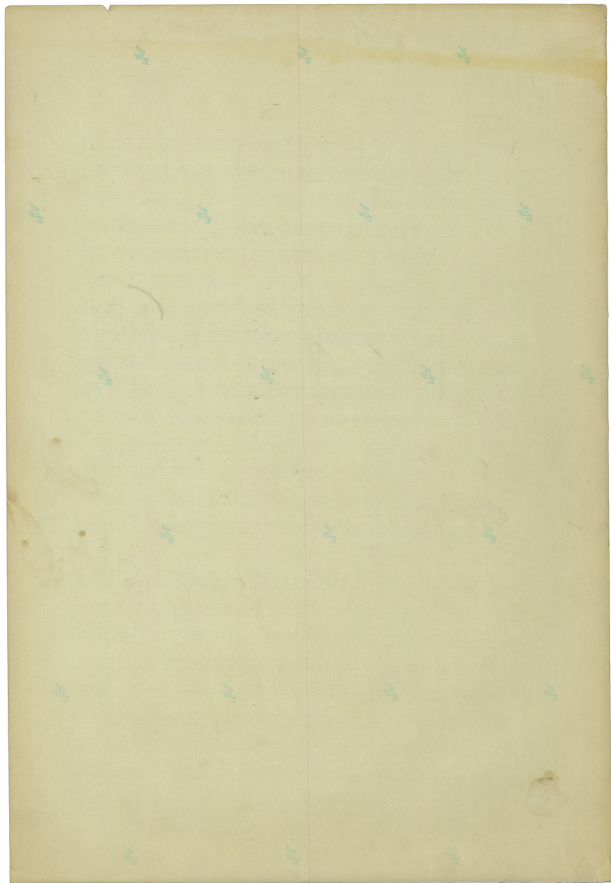
(A)

(B)

(A)

(B)

Succendo



10/10

10/10

10/10

10/10

10/10

10/10

10/10

(7A)

Handwritten musical notation for a single instrument, possibly a flute or clarinet. The notation includes a treble clef, a key signature of two flats (B-flat and E-flat), and a 2/4 time signature. Above the staff, there are boxes containing the text "MERS DEBRO" and "M20". The notes are written in a rhythmic pattern with stems and beams.

Handwritten musical notation for two instruments: Flute (Fl) and Harmonica (Hac). The Flute part is in a treble clef with a key signature of two flats. The Harmonica part is in a bass clef with a key signature of two flats. Below the notes, there are handwritten labels: "FA", "mib", "solb", "FA", "FA", "mib", "FA".

Handwritten musical notation for Flute (Fl) and Harmonica (Hac). The Flute part is in a treble clef with a key signature of two flats. The Harmonica part is in a bass clef with a key signature of two flats. Below the notes, there are handwritten labels: "mib", "mib", "FA", "solb", "mib", "FA", "FA", "solb".

Handwritten musical notation for Flute (Fl) and Harmonica (Hac). The Flute part is in a treble clef with a key signature of two flats. The Harmonica part is in a bass clef with a key signature of two flats. Below the notes, there are handwritten labels: "FA", "mib", "solb", "FA", "mib", "ze", "solb", "solb", "solb", "solb", "mib", "mib".

Handwritten musical notation for Mandolin. The notation includes a treble clef, a key signature of two flats, and a 2/4 time signature. Above the staff, there is a box containing the text "MERS DEBRO". The notes are written in a rhythmic pattern with stems and beams.

MERS DEBRO	MERS DEBRO	MERS DEBRO	MERS DEBRO	MERS DEBRO	MERS DEBRO
Clarin	Mandolin (A)	Pitang (B)	Kisapa	(A) Harmon	Pitang
Kisapa	Kisapa (Pitang) (B)	Pitang (B)	Kisapa	(B) Pitang	Pitang
	Pitang (B)		Kisapa		

1/2

1/2

1/2

1/2

1/2

1/2

1/2

1/2

1/2

1/2

1/2

1/2

1/2

1/2

1/2

1/2

1/2

1/2

1/2

1/2

1/2

1/2

1/2

M19

Ξόδος ΚΙΝΗΣΙΑ

ΣΑ 8

Melo

MERO SOUTERO

(A) *Mandolin*

Ai Ai Ai Ai w- sur- poi- pe sé- a-
 Vá nu tu ypi-m é- ne- ses kai sé- vai yo- éf-
 pa Ai Ai Ai- Ai kai-eros pí- vu tu- é- pe Bas
 pú- us Ai ñ Kap- Sía nou ena- pá fa- yu-
 Xi á- na- tu- pe va Ai Ai Ai Ai noi- ve- ypaí noi- yu-
 Xi av- te Xúv noi- vú av- trós tá- óm- pi- sím noi- á-
 yu- va au-ís ku- jó- va tév- tíw- vón- sa tí- jó- á- jó-
 hi éw ta to éf- jó- tov E- pu- ta- va fúv é Xúv- óv- va- to

ei jóv

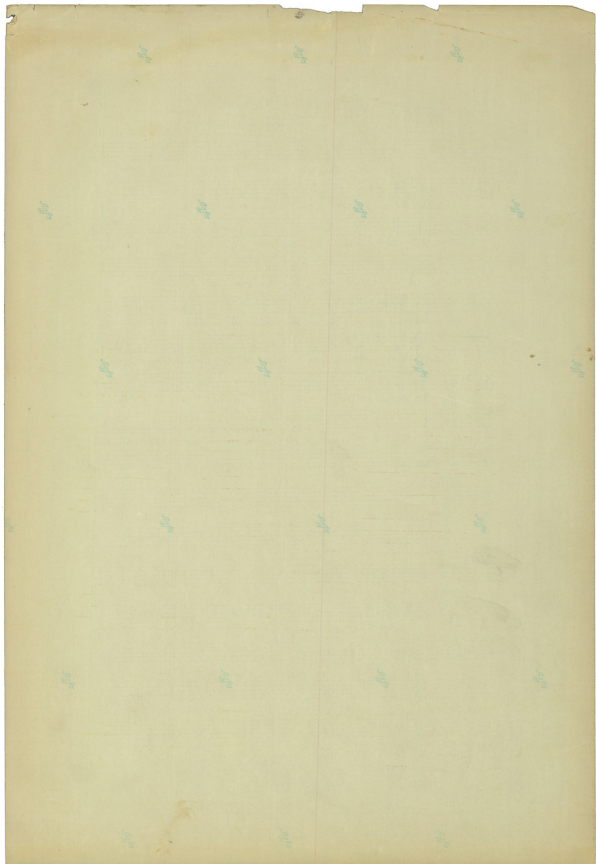
(B)

(C)

AKOINTA

bas
 2/8
 3/8
 2/4

Ki Saen | Cello
 Sampi | Pomo



۱۰۰

۱۰۰

۱۰۰

۱۰۰

۱۰۰

۱۰۰

۱۰۰

۱۰۰

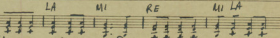
M22

10

1. Cop. cell.
From S. P. (T. J. M.)
Just

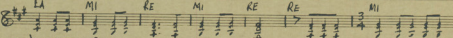
ARANTON DEATES

LA LA MI RE MI LA

LA LA | >  LA LA MI RE MI LA

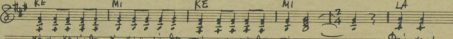
A tes me tes a tes. X. P. de vu jai sup-va-

LA MI RE MI RE RE MI

 LA MI RE MI RE RE MI

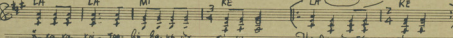
A tes me tes pe va tes pa ki ka va vo. Ka jo bu X. u. ka jo bu.

RE MI RE MI LA

 RE MI RE MI LA

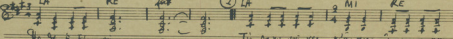
ka jo bu fi en ka jo bu mi u ka jo bu mi va. Phi-vaud

LA LA MI RE LA (RE-TD) Sout RE

 LA LA MI RE LA RE-TD Sout RE

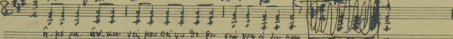
o ca va va pa pa va pa va o ca va pa pa va. He. de à Et. pa va

LA RE ② LA MI RE

 LA RE ② LA MI RE

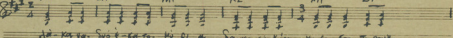
He. de à Et. pa va. Tu pa va va va va va va va va va va va va

MI LA LA MI V RE

 MI LA LA MI V RE


fi pa va va va va va va va va va va va va va va va va va

MI LA MI RE MI LA

 MI LA MI RE MI LA


A. ka va. Suo à ka va. fi pa va va va va va va va va va va va va

LA MI RE MI RE

 LA MI RE MI RE


fi pa va va va va va va va va va va va va va va va va va

LA (RE-TD) Sout RE 3 LA MI RE

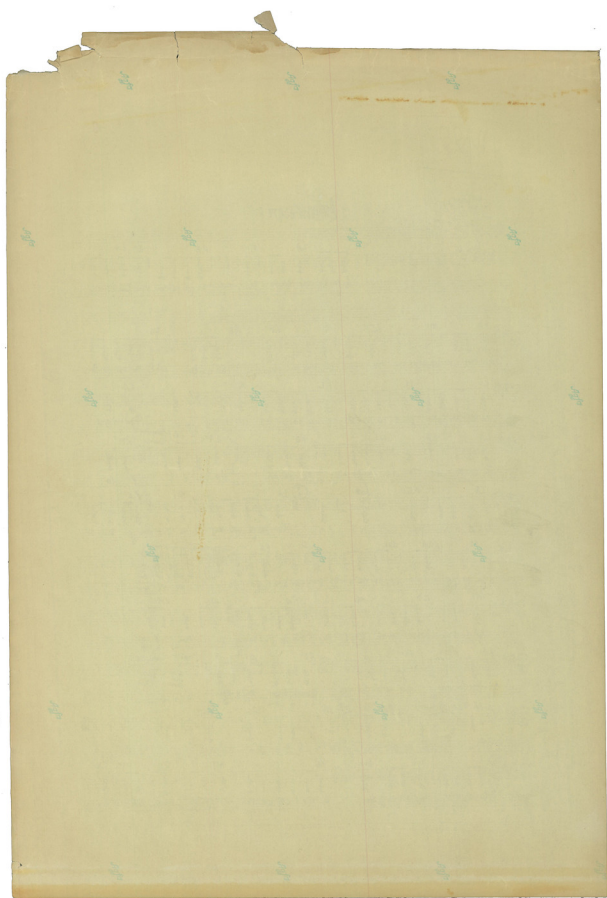
 LA (RE-TD) Sout RE 3 LA MI RE

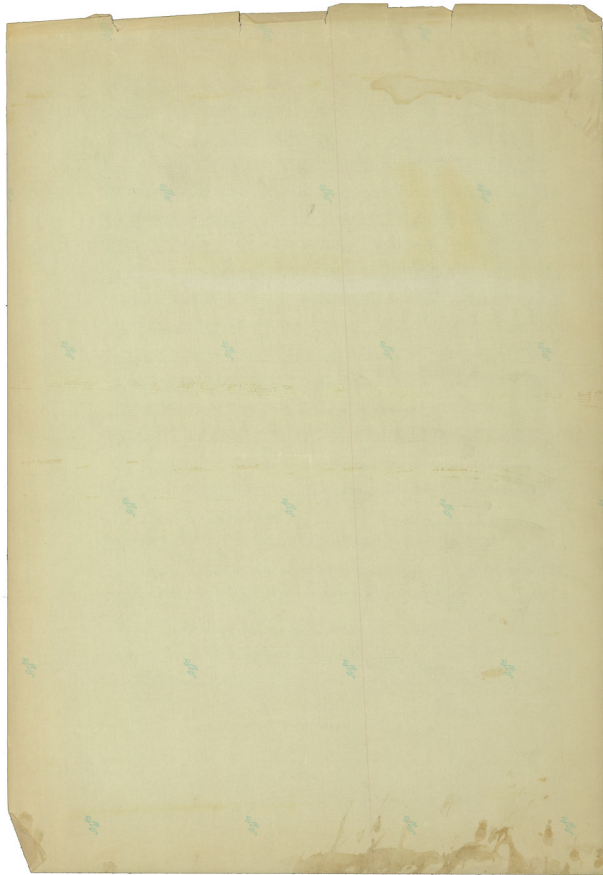
He. de à Et. pa va va va va va va va va va va va va

③ LA LA ① RE MI RE

 ③ LA LA ① RE MI RE

Ki. de va va va va va va va va va va va va va va va va va





6

ΑΡΙΣΤΟΦΑΝΗ
ΑΥΞΙΣΤΡΑΤΗ
(ΠΕΤ. Μ. ΒΟΥΝΑΚΑ)

M 24

Σελ 13

ΜΝΗΜΟΣΥΝΗ

ΜΙΚΡΟΣ ΟΡΧΗΣΤΡΟΣ

Handwritten musical score for a string quartet. The score is written on ten staves, with the first staff for Violin I and the others for Violin II, Viola, and Cello/Double Bass. The music is in 3/4 time and features various rhythmic patterns, including triplets and sixteenth-note runs. There are several dynamic markings such as *f*, *w*, *sfz*, and *pp*. The score includes Greek lyrics in both uppercase and lowercase letters. Some parts of the score are marked with "Timpani Cassa" and "Timp.".

Violin I: *f w* ... *sfz* ...

Violin II: *w* ... *pp* ... *sfz* ... *pp* ...

Viola: *w* ... *pp* ... *sfz* ... *pp* ...

Cello/Double Bass: *w* ... *pp* ... *sfz* ... *pp* ...

Lyrics (Greek):
 - *cu tis Mra* ... *Has* ... *ne tis po em ar spu rias*
 - *pa ve cu pu ra tis - pa pu, ces A-θa rai es, to Ap-te pi. ci. o. Se : o. Pop-φs*
 - *tuy - Nepoay. tis Mpa-φs* ... *v a vti xpi-σu v vi- kn' go psi*
 - *Tou A-w vi. su tis Mpa-φs u-ka, vi. for tis pto-va. Ki a. l'pou ete xpi-σu. v r' o' p'is ete*
 - *oxe lu to af. pu* ... *Koi Nepoay u k e - Ten. i. Toi* ... *cu. xpe. up. pu. os. θu.* ... *Alb' tou uy; po.*

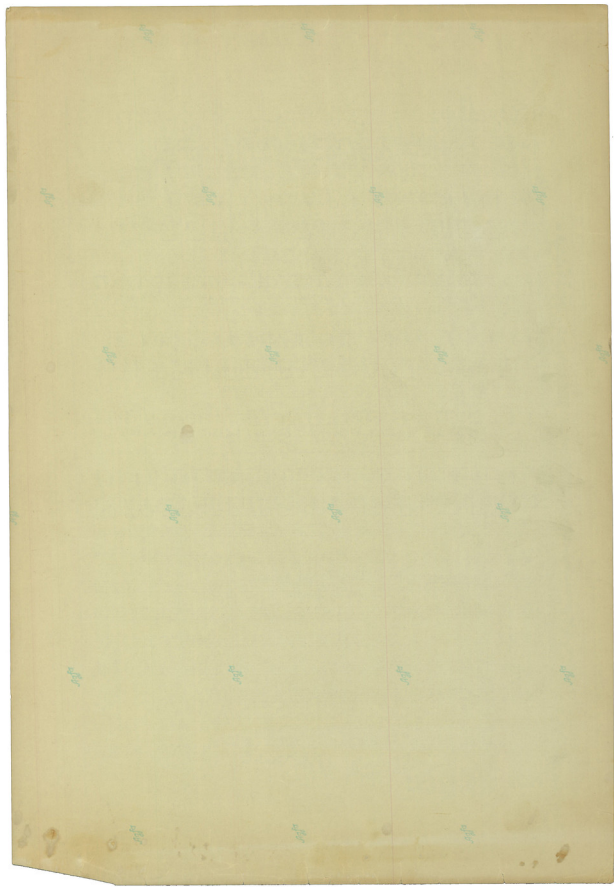
Annotations: *Schwarz*, *Timpani*, *Cassa*, *Timp.*, *Cassa*.

Handwritten musical score for the first system. It features a vocal line and a piano accompaniment. The vocal line includes the lyrics: "Uy pa-ee e. Su Uy pa-ee e. Su". Above the vocal line, there are handwritten annotations: "mandala" and "L. 2/4". The piano accompaniment consists of chords and rhythmic patterns.

Handwritten musical score for the second system. It features a vocal line and a piano accompaniment. The vocal line includes the lyrics: "o Su ffe Ray Se". Above the vocal line, there are handwritten annotations: "rap. 2/4" and "pa". The piano accompaniment continues with chords and rhythmic patterns.

Handwritten musical score for the third system. It features a vocal line and a piano accompaniment. The piano accompaniment includes a handwritten signature and the date "12.10.66".

Seven empty musical staves, indicating that the page is mostly blank.



M 26



AMITON TAUVETO

Musique

TAM TAM

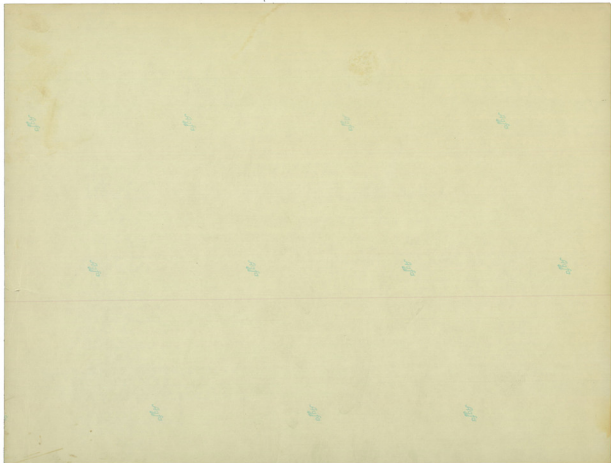
Solo Trombone

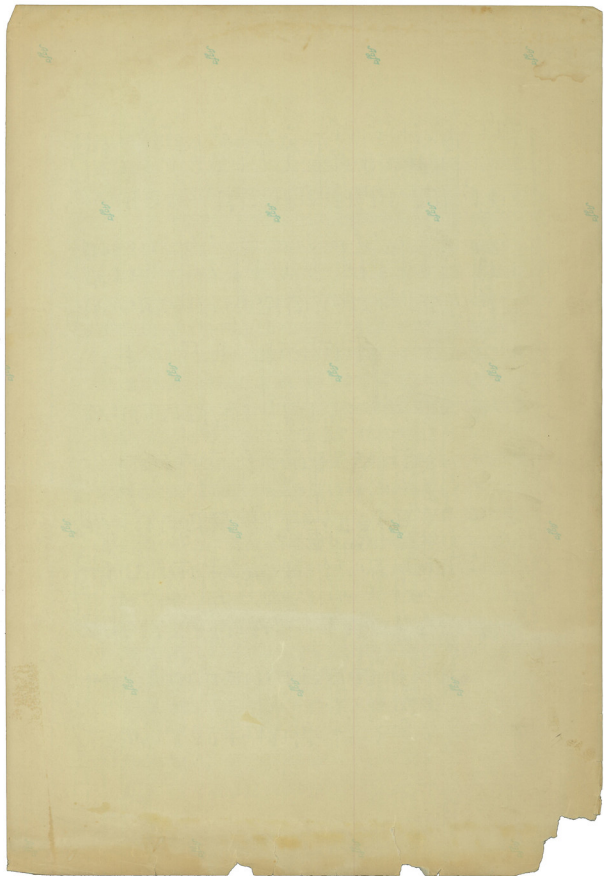
Ae-tia. Ta. ü-ga to ier. Spa. Bai vi fap ut ä-fio. Pü-Si. Ma. ca. Ma. Kau. Kau. Kau.

Vei-mo to xi-n. TA-naj. ju. va. Ká-er. ju. juu. ni. A. pu. xmas. K'i. pu. se. Tau. Kau. Ki. Kau. A. 99.

va. Ká. Di. ó. esu. pas. ar. f'p. ma. 9t. o. ge. ó. cap. Ka.

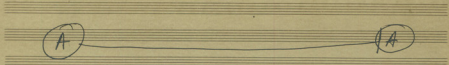
au. x. av. á. 9. pa. r. e. i. pa. r. á. ja. tu. tar. ses. E. i. pá. ra. tu. ve. cu.



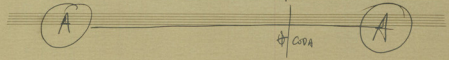


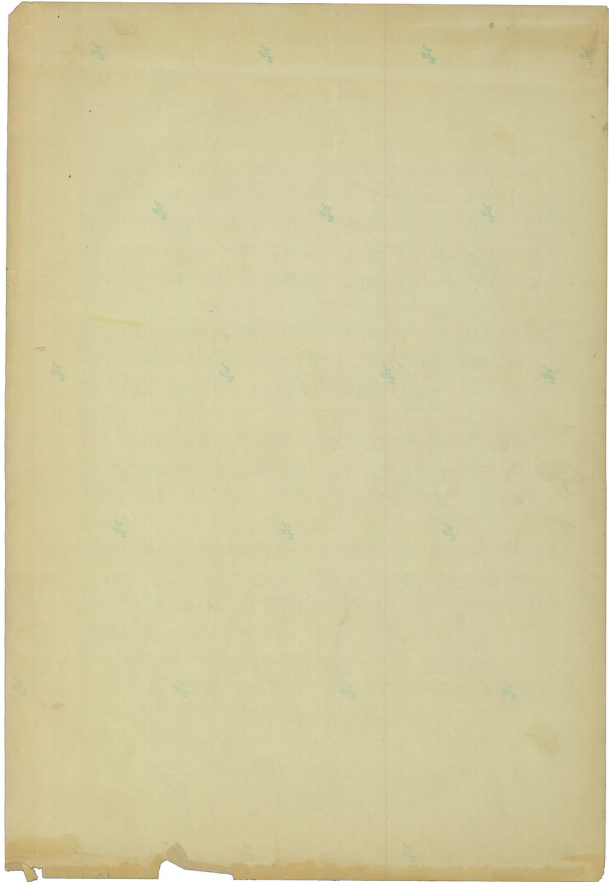
W26 *Empire*

20 



①





M26 *comp. f*

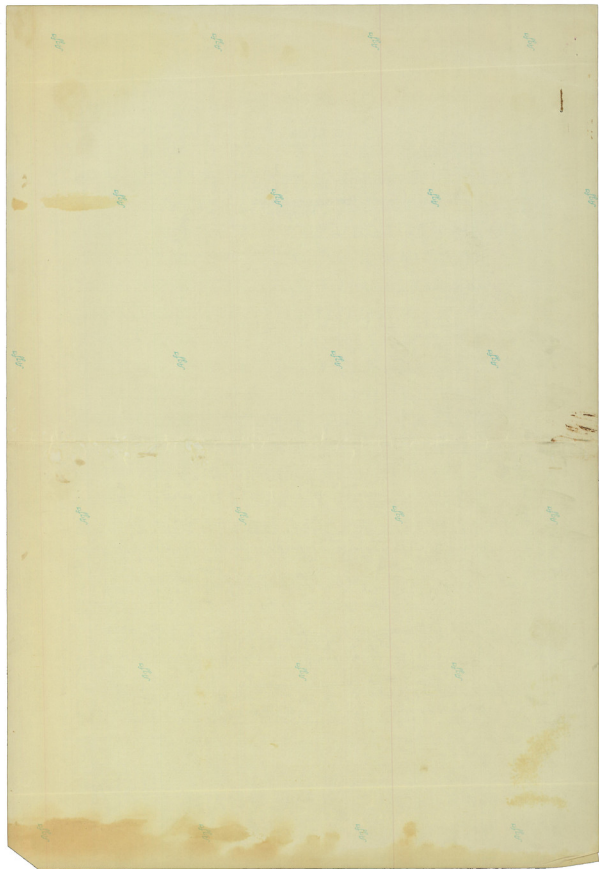
21 ²²

Φ Coda

Handwritten musical notation for the first system of a Coda section. It consists of three staves: Treble, Bass, and Cello/Double Bass. The key signature is two sharps (F# and C#). The first measure is in 9/8 time with notes G4, A4, B4, C5. The second measure is in 10/8 time with notes G4, A4, B4, C5, D5, E5, F#5, G5. The third measure is in 7/8 time with notes G4, A4, B4. The bass staff has notes LA# in the first two measures and LA in the third. The cello/bass staff has a rhythmic pattern of eighth notes in the first two measures and a similar pattern in the third.

Handwritten musical notation for the second system of a Coda section. It consists of three staves: Treble, Bass, and Cello/Double Bass. The key signature is two sharps (F# and C#). The first three measures are in 3/4 time, and the final measure is in 4/4 time. The notes in the treble staff are G4, A4, B4, C5, D5, E5, F#5, G5. The bass staff has notes LA in all measures. The cello/bass staff has a rhythmic pattern of eighth notes in all measures. The final measure is marked "4 prin".





ME MABO ZE MABO

XOPOT PANEN

divisi 3

DO DO

Me hi horepi bo

Yase e si pa

To-mi-yu

Yase e si pa ni ur

To-ti hore pi bo

ni tu pa ni ur

Yase e si pa

uasi

ni tu pa ni ur

ff

Yase e si pa ni ur

Me hi vi ur

Kapisi ni Ti pa na

To-ti hore pi bo

Yase e si pa ni ur

ni tu pa ni ur

DO

ni tu pa ni ur

Yase e si pa ni ur

To-ti hore pi bo

ni tu pa ni ur

Yase e si pa ni ur

ni tu pa ni ur

Yase e si pa ni ur

To-ti hore pi bo

ni tu pa ni ur

Yase e si pa ni ur

ni tu pa ni ur

Yase e si pa ni ur

ni tu pa ni ur

Yase e si pa ni ur

To-ti hore pi bo

ni tu pa ni ur

Yase e si pa ni ur

ni tu pa ni ur

Yase e si pa ni ur

ni tu pa ni ur

Yase e si pa ni ur

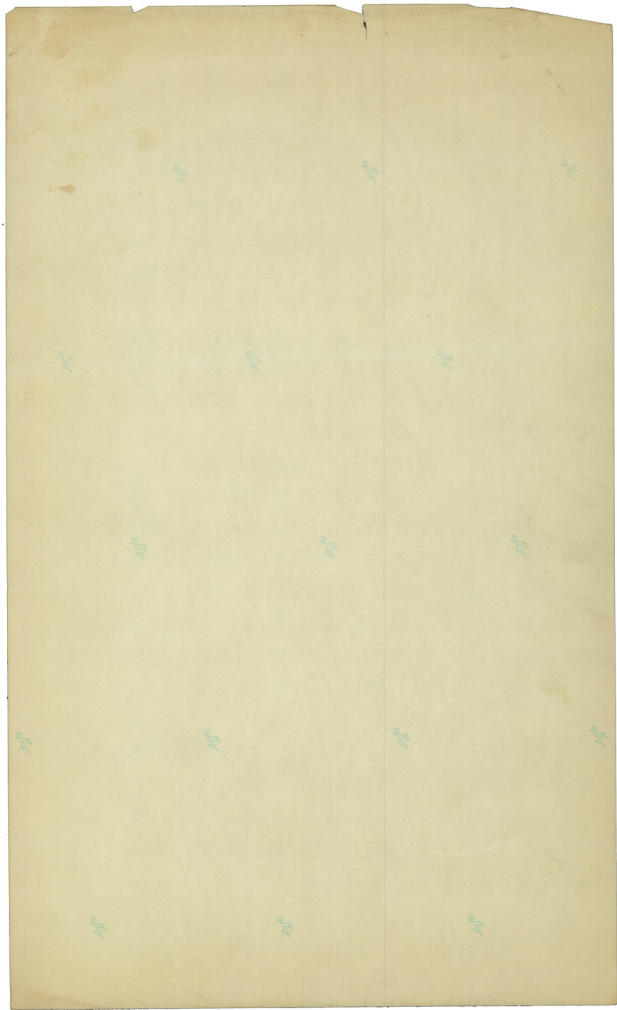
To-ti hore pi bo

ni tu pa ni ur

Yase e si pa ni ur

ni tu pa ni ur

Yase e si pa ni ur



ΑΡΧΕΙΟ

Ε=0002 1^{RS}

ΑΡΙΣΤΟΦΑΝΗ
ΛΥΣΙΣΤΡΑΤΗ
(ΠΕΙ. Μ. ΒΡΑΖΝΑΧ)



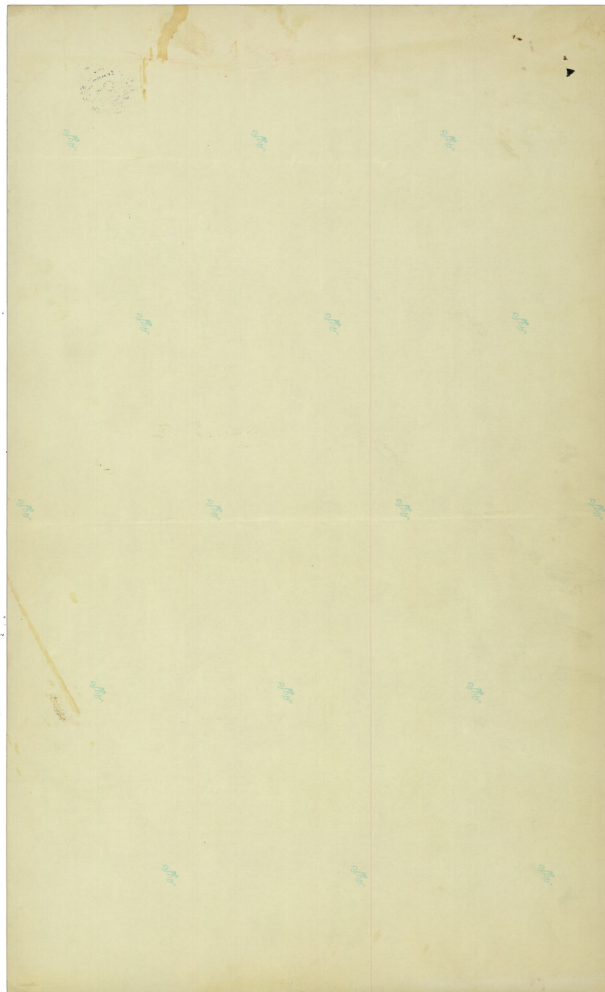
ΜΝΗΜΟΣΥΝΗ

MIKHS ΘΕΟΔΩΡΑΚΗΣ

Handwritten musical score for the hymn "Mnimosyni" (Memorial Hymn) by Mikhs Theodorakis. The score is written on ten systems of five-line staves, each containing a vocal line and a piano accompaniment line. The music is in 3/4 time and features various musical notations including treble and bass clefs, notes, rests, and dynamic markings like 'f' and 'w'. The lyrics are in Greek and are written below the vocal lines.

Lyrics (from top to bottom):

F W. 1-
 W. εμν. σε Μνη. πο συ. - νη. Μου -
 - σα της Μνη. - - - - - μας νε. τει πο πια αυ. οπι γεει
 ημεις και παττα το - πα μα. - - - - - ος Α. θη. ραι ες ο. αρ. τε μι. - σι. ο. θε. ο. πορ. φο
 των. Περσευ. - τισ Πρω. περ - - - - - νει νη. κρο. ουν νη. κη. φο ροι
 του Α. θη. νη. σου τας μαρτυ. ραι. - - - - - νη. τον ρα προ. σο. νη. - - - - - κη. ε. ρπας στα χη. λη. κη. ρπας στα
 ος Α. τα το α. μα - - - - - και Περσευ. α. πε. τρη. τοι. συν. τη. υπ. πο. ρο. συ. - - - - - ης τον υπ. πο. - - - - -



ΑΡΧΕΙΟ ΕΣ. 2

- 2.



(LUS) (ΟΛΟΙ)

ΚΙΨ. ΠΗ-ΕΕ-ΣΩ ΚΙΨ. ΠΗ-ΕΕ-ΣΩ

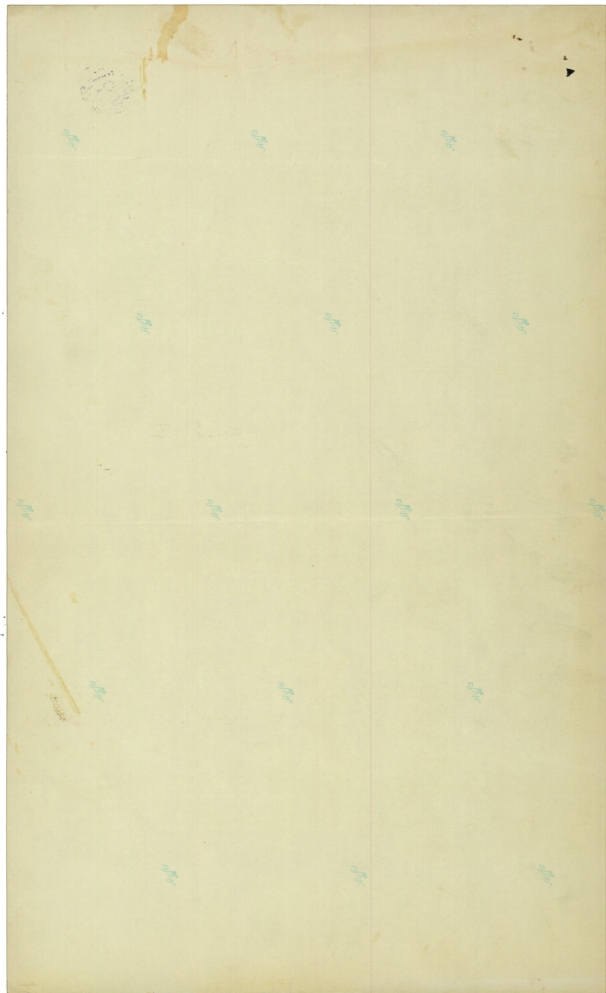
ΚΕ-ΣΥ-ΑΡ-ΤΕ-ΠΗ-ΝΑΡ-ΣΕ-ΒΑ ΠΑΡ-ΣΕ-ΒΑ-Σ-

3

ΝΕΡ-ΜΑ-ΧΗ Α-ΠΟ-ΚΟ-ΡΗ ΚΙΨ. ΠΗ-ΕΕ-ΣΩ

ΣΕΣ ΤΙΣ ΤΕΡΕ. ΣΕΣ ΜΑΔ ΣΕ-ΡΕ ΜΑΔ ΟΣ-ΥΝ-ΕΝ' ΙΝΟ-ΤΟ-

ΧΡΟ- - - - - ΒΙΑ ΝΕ- - - - - ΦΙ-ΛΙ- - - - - Α-ΑΙ-Ω- - - - - ΥΙΟ ΚΑΡΠΟ ΦΟ-ΠΑ



3. ΑΡΧΕΙΟ

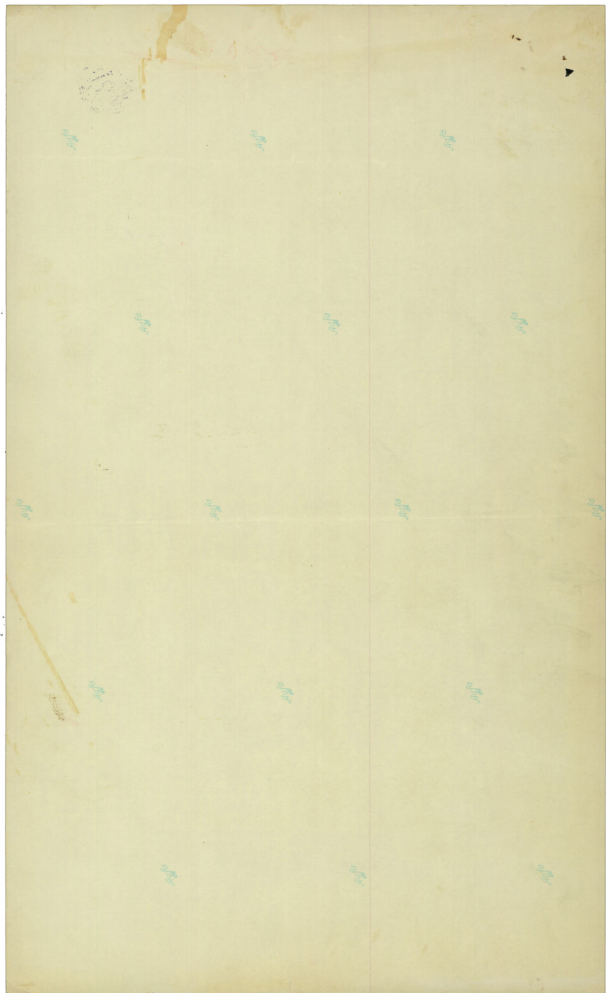


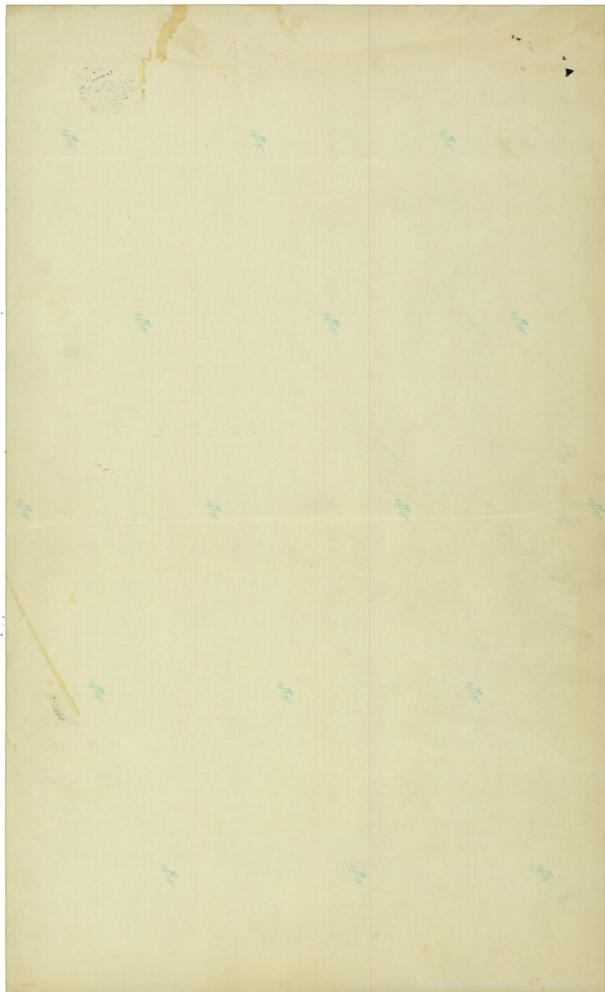
Handwritten musical score for the first system. It consists of a vocal line and a piano accompaniment. The vocal line has lyrics in Greek: "Αρχε ο ε. σω αρχε ο ε σω". The piano part features a rhythmic accompaniment with eighth and sixteenth notes.

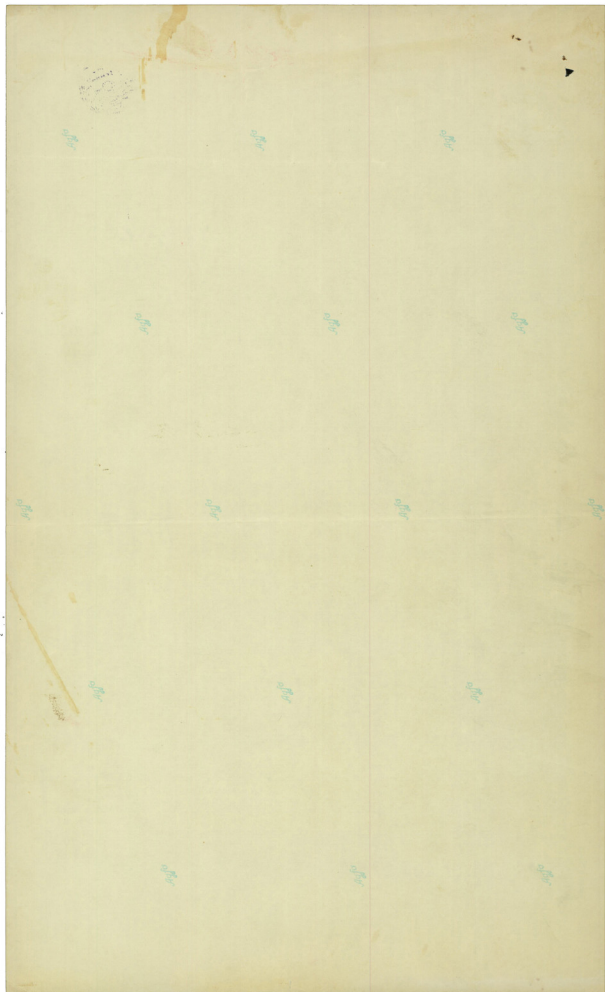
Handwritten musical score for the second system. It includes a vocal line with lyrics "Αρχε ο ε σω αρχε ο ε σω" and a piano accompaniment. The piano part continues with a similar rhythmic pattern, including some rests and dynamic markings.

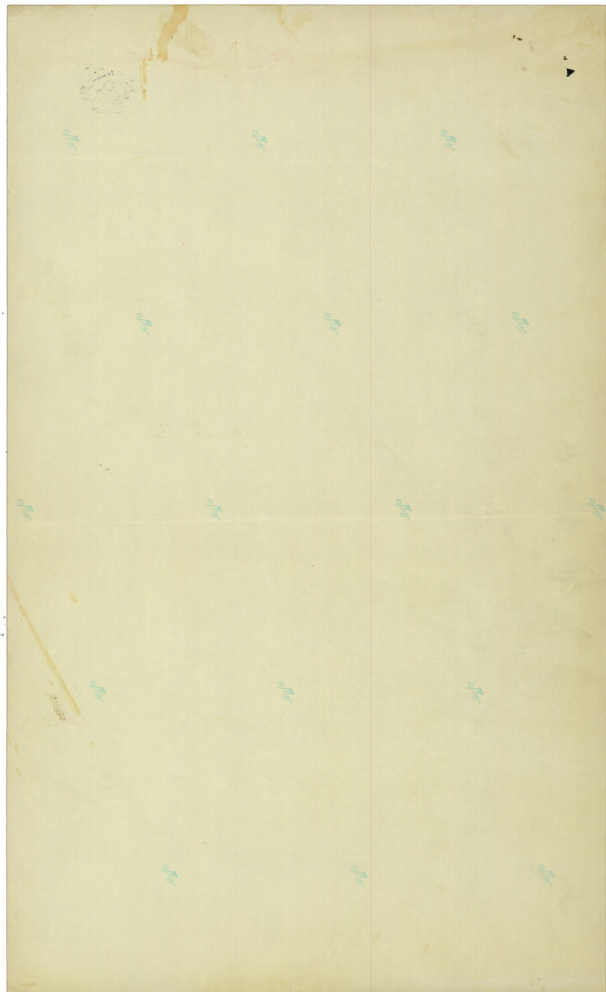
Handwritten musical score for the third system, which is mostly blank. It shows a few notes in the vocal line and a piano accompaniment. A signature and date are present: "Α. Μ. Μ. 13.10.66".

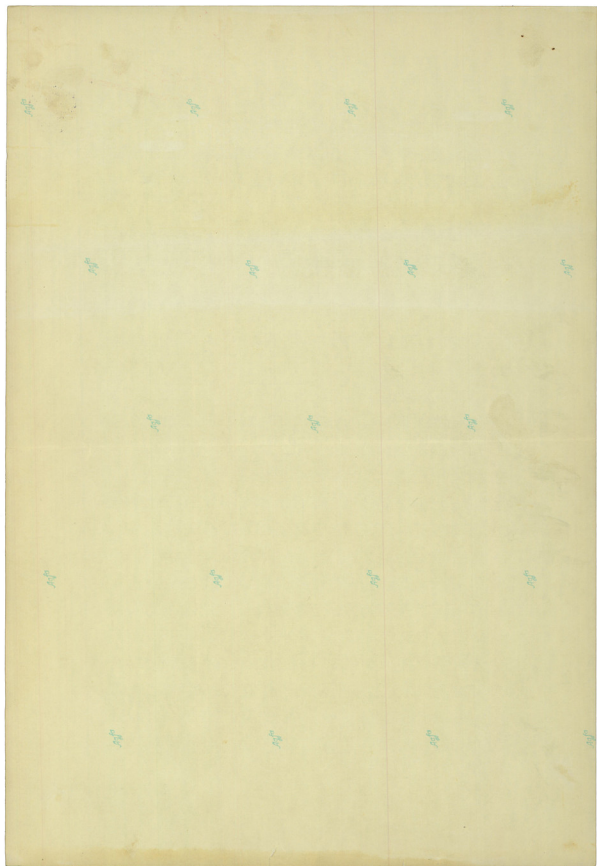
A series of ten empty musical staves, providing space for further notation or performance.











ΑΡΧΕΙΟ



2

rit

Κυ-ριε ε-ξω-τος
α-δω-τος υψι-στος
υψι-στος υψι-στος υψι-στος

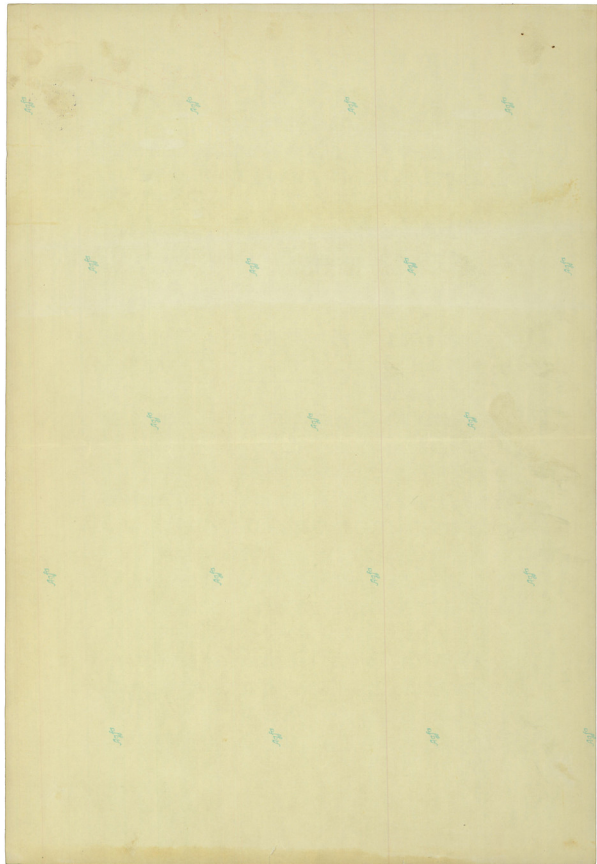
rit

Πα-τηρ τα-ξι-της
ουρα-νου και
γης
και
υψι-στος υψι-στος υψι-στος

Τα-χι-θη-της
και
υψι-στος υψι-στος υψι-στος

και
υψι-στος υψι-στος υψι-στος

*ΝΟΤΑ ΗΑ ΣΟΦΙΑΣ Η ΑΝΘΡΩΠΟΥ
ΑΝ ΤΟ ΑΔΕΙΟΧΡΗΜΑΤΙΣΤΟ ΕΙΝΑΙ ΕΝΤΟΙΜΟΝ



ΑΡΧΕΙΟ

E =

8

3-



τό περ κιά γ' α-ρι-ν
 ούδ' εἰ ποτα-τα ἔ-πα

ἄρα οὐκ ἔ-στιν
 καὶ ποταμός πο-ταμός

οὐκ -
 εὐραίοι καὶ ἡμετέροι ἔ-στιν

οὐκ ἔ-στιν
 καὶ οὐκ ἔ-στιν

ἄρα οὐκ ἔ-στιν
 καὶ οὐκ ἔ-στιν

Fa

E=9

4.

37



Handwritten musical notation for the first system, consisting of two staves. The left staff is a bass clef with a treble clef bracketed above it, and the right staff is a treble clef. The music is in 8/8 time. The lyrics are: "ti - va o 3p. va o". The notation includes various rhythmic values and accidentals.

Handwritten musical notation for the second system, consisting of two staves. The left staff is a bass clef with a treble clef bracketed above it, and the right staff is a treble clef. The music is in 8/8 time. The lyrics are: "a - - - - - xi Xaf. xi OI xo 494- va vai o- oie pa X- - - -". The notation includes various rhythmic values and accidentals. A bracket on the right side of the second staff is labeled "(4 trn)".

10/10

10/10

10/10

10/10

10/10

10/10

10/10