

deux. ^{deux} Complaines. La prière du mort - "Complaintes Rustiques" 7
 de deux. Complaines d'une femme Prière à l'orphelin *Helute*

Pastorales
 Funèbres

Prologue.

C.G.
d.
tr. mod. lège

tes mains à l'oraison d'eu-ly, te a dieu
 E. mato te sui no-ya - leus,
 mais ce-s'com
 stitu me en toud'pay vis-ion

moi, je m'arrose ta am et ie te, lade eu raiu - heru pers eler, leus da-se pau -
 Si tes par te port ent non ly - piele etler, si - ves de c'he-he Cher-che la n'el

sein ai né e Re les natus d'eu-ly
 Nyl-lus et dis lui qu'il est l'ère un l'oy
 deuil - Ann le fil qu'il n'ère-oss -

bras-se-poit. Couche-ant sille et vai-se. Rien-instant se ca
 ré-ve s'in-2. Dieu et pleu-se. Quel'aven-gé mon-tré-

mf

mie!

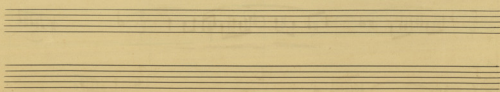
ah! ta v'ce plara moi! Et l'é-ter-nel-ment me se-ra ve-de toi! Et se-rais
 Pass-donc - et si ja-mais à l'é-ter-nité je ton-be - tu ren-intre au pied d'un

seule au monde! - o! di-i - tes ja-lou-ses! - o! Dieu-x
 C'est un d'a-re tombe u-ne femme au front blanc - j'ai vu au noir

Dieux de la mort En-ne-mis les ci-ens, se, que *vous saige*
 - lan beau - Ap. pro-che tri - ne crains ai la
 Sola.

fait? *à* *reine et ange* *qui!*... *Trois*
 mit ni ses, char - mes - - - - - est ma

nois en-lacata peine! - - - - - *O sois l'ami en-mi!* *O*
meille, a - tra. cer *qui sur un vain tom-beau en*
rit. 2da *pp.*



tombe ou - ve tes bras à la scave ex - pi - rante i - st

ame une ar - ne side et l'cu - plit de ses lar

h.

puisqu'il ne vit plus, comment se ré - com - pen - se - ra - t - il

mes

Cba

h. p.

puisqu'il ne vit plus, comment se ré - com - pen - se - ra - t - il

Emmeruod

Réce au rendez vous où je vi-rais pour toi,
Vrai cette nuit

pleurs, avec lui tes bras et ^{leurs} ~~leurs~~ ^{les} ~~les~~ baisers.

à Madame Righetti-Garland,
en souvenir de Joseph.

Melodies antiques //

Épigramme Funéraire.

La prière d'un mort.

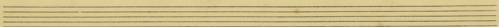
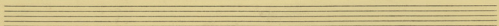
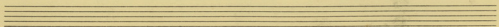
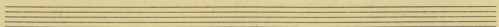
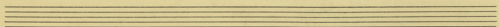
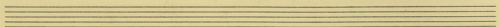
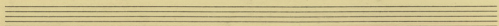
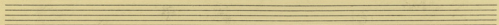
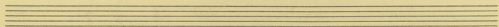
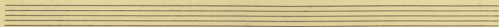
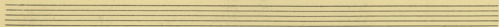
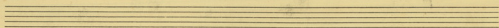
parles

de J. M. de Heredia

musique

de Emile Riadi

Paysage idyllique, au ciel, aux lignes nettes et pures,
au coloris varié. Sous l'ombrelle d'un figuier des bergers
se reposent. Des sons graves d'instruments primitifs,
sourdissent lentement sous le grand soleil d'un
midi d'été, et s'évaporent sans hâte
dans la prairie plaines ... — Riadi —



pour deux instruments à vent. *Allegro.*

Tutti.

et profusamente venis de rivis caelestibus altissimis in

Handwritten musical score for the first system, featuring three staves with notes and rests. The top staff is in treble clef with a key signature of two flats and a 3/4 time signature. The middle staff is in bass clef with a key signature of two flats and a 3/4 time signature. The bottom staff is in bass clef with a key signature of two flats and a 3/4 time signature. The music includes various note values, rests, and dynamic markings such as *mf* and *f*.

Handwritten musical score for the second system, featuring three staves with notes and rests. The top staff is in treble clef with a key signature of two flats and a 3/4 time signature. The middle staff is in bass clef with a key signature of two flats and a 3/4 time signature. The bottom staff is in bass clef with a key signature of two flats and a 3/4 time signature. The music includes various note values, rests, and dynamic markings such as *mf* and *f*.

Handwritten musical score for the third system, featuring three staves with notes and rests. The top staff is in treble clef with a key signature of two flats and a 3/4 time signature. The middle staff is in bass clef with a key signature of two flats and a 3/4 time signature. The bottom staff is in bass clef with a key signature of two flats and a 3/4 time signature. The music includes various note values, rests, and dynamic markings such as *mf* and *f*.

Handwritten musical score for the fourth system, featuring three staves with notes and rests. The top staff is in treble clef with a key signature of two flats and a 3/4 time signature. The middle staff is in bass clef with a key signature of two flats and a 3/4 time signature. The bottom staff is in bass clef with a key signature of two flats and a 3/4 time signature. The music includes various note values, rests, and dynamic markings such as *mf* and *f*.

Longa - de res-te, sit i - ca - chaet. lucif - ne - be

mf *mf* *p*

Et in hoc saeculo quibus sae - cu - lae sine et pe - re

intra ven - ge - mae sui - mae

et semel passio

condem - et si quis Chamae - lom - tu - ren - cadis an - per - den

7.

forte in vane toute a - ne femme au front blanc germe en noir lam-beau

hu - che tri - ne main ni la nuit ni ser

den - ner

dim

C'est ma mère, a - rangon

qui

dim



Ret - AA.

su - ra - va - is - tou - beau - em - brase - me - ar - re - vide - et - la - plit - de - la - sa -

u

lan - mes

Leut.

Handwritten musical score for voice and piano. The score is written on four systems of staves. The first system includes a vocal line with lyrics "A-re-te E-con-te-mu-ser-ga-gem" and a piano accompaniment. The second system continues the vocal line with lyrics "Et in Spi-ri-tu Sancto Do-mi-no et Coe-li et Ter-rae et Aquae et Ignis" and the piano accompaniment. The third system continues the vocal line with lyrics "Et qui ex Patre Filio-que Pro-cedens simul adoratus et con-glora-tus" and the piano accompaniment. The score is heavily obscured by large, dark, scribbled-out areas that cover the notes and lyrics in the first two systems.

Five empty musical staves, each consisting of a five-line staff with a clef and a key signature, arranged vertically.

This image shows a page of aged, yellowed musical manuscript paper. The page is ruled with 12 horizontal staves, each consisting of five lines. The staves are arranged vertically down the page. The paper shows signs of wear, including some foxing and a small dark stain on the left side of the fourth staff from the top. In the top right corner, there is a small, rectangular stamp or label that reads "No 2", "12 Lines", and "Musical Manuscript" in a small, serif font. The overall appearance is that of an old, unused sheet of music paper.