

du poète ~~\_\_\_\_\_~~

Musique  
sur le rot d'une fille du ciel.

Les parfums de mon char  
tourbillonnent dans l'air  
Comme un <sup>trille d'hirondelle</sup> ~~vol de pigeons~~.  
Quel est l'oiseau qui  
pourrait chanter la  
Grâce de votre corps...

~~\_\_\_\_\_~~  
pour chant et piano.

paroles et musique de :

emikoriadis

I. Persepolis

II. Oïdes du raga

III. Vent dans les nuages

Vent  
oies sauvages  
La danse de la tresse

Le vent <sup>propre</sup> souffle la haut  
Dans les nuages  
Son troupeau de nuages  
Le vent vole la haut  
plus vite qu'un vol de cygne

int.

b

1 1

~~int. 1 1 1 1~~  
1 1 1 1

~~int. 1 1 1 1~~

~~1 1 1 1~~

1 1 1 1 1 1  
Trompe

Grosse  
caisse.

Tam-tam

Symphonies en métal

air

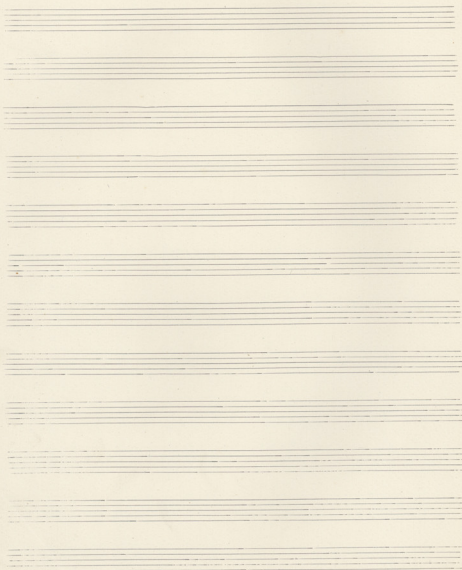
m

Nocturne

Des sautres

Le Rossignol

vent



Nocturnes

Tranquille et fleurie Sz 180. I. à Dies saurages

Handwritten musical score for the first system. The vocal line is written on a treble clef staff with lyrics: "au la, sou pié sa", "à bla", "sue". The piano accompaniment is on a grand staff (treble and bass clefs). The tempo/mood is marked "p.p. fleurie".

Handwritten musical score for the second system. The vocal line continues with lyrics: "sue", "ra -", "pide", "sa -", "ves". The piano accompaniment continues on the grand staff.

Handwritten musical score for the third system. The vocal line has lyrics: "les", "ra -", "saur". The piano accompaniment continues on the grand staff.

Handwritten musical score for the fourth system. The vocal line has lyrics: "sa", "ho", "tre". The piano accompaniment concludes on the grand staff.

bar - que mes. Qui mes. juit ce

The first system of handwritten musical notation consists of two staves. The upper staff is a vocal line in treble clef with a 2/4 time signature. It contains the lyrics "bar - que mes. Qui mes. juit ce". The notes are written in a cursive style, with some slurs and dynamic markings. The lower staff is a piano accompaniment line in bass clef, showing chords and rhythmic patterns corresponding to the vocal line. The key signature has one sharp (F#).

le ce son de

The second system continues the musical piece. The vocal line (treble clef) has the lyrics "le ce son de". The piano accompaniment (bass clef) continues with chords and rhythmic figures. The notation is dense and handwritten, with some corrections and slurs visible.

fois - son - nan - te de

The third system of the handwritten score features the lyrics "fois - son - nan - te de". The vocal line (treble clef) and piano accompaniment (bass clef) continue. The notation shows various chordal structures and rhythmic patterns, with some slurs and dynamic markings.

lac

The fourth system shows the lyrics "lac". The vocal line (treble clef) and piano accompaniment (bass clef) continue. The notation is dense and handwritten, with some slurs and dynamic markings.

gaut at - ta - die a

This system contains the first two measures of the piece. The vocal line is written in a soprano clef with a treble clef and a key signature of one flat. The lyrics 'gaut at - ta - die a' are written below the notes. The piano accompaniment is written in a bass clef with a treble clef and a key signature of one flat. The music is in 8/8 time. The first measure contains the notes G4, A4, B4, C5, and the second measure contains the notes D5, E5, F5, G5.

sen ray ons u - ta sans ce

This system contains the next two measures. The vocal line continues with the lyrics 'sen ray ons u - ta sans ce'. The piano accompaniment continues with a similar rhythmic pattern. The notes in the vocal line for the second measure are G4, A4, B4, C5, and for the third measure are D5, E5, F5, G5.

monument de - ses

This system contains the next two measures. The vocal line has the lyrics 'monument de - ses'. The piano accompaniment continues. The notes in the vocal line for the third measure are G4, A4, B4, C5, and for the fourth measure are D5, E5, F5, G5.

les re - sans

This system contains the final two measures. The vocal line has the lyrics 'les re - sans'. The piano accompaniment concludes the piece. The notes in the vocal line for the fourth measure are G4, A4, B4, C5, and for the fifth measure are D5, E5, F5, G5.

Handwritten musical notation on a five-line staff. The notation includes various notes, rests, and accidentals (sharps and flats). There are some markings above the staff, possibly indicating dynamics or articulation.

Sur le ciel loin-tein

Handwritten musical notation on a five-line staff with the lyrics "Sur le ciel loin-tein" written above it. The notation includes notes, rests, and accidentals.

ser

Handwritten musical notation on a five-line staff with the lyric "ser" written above it. The notation includes notes, rests, and accidentals.

lan-stra

Handwritten musical notation on a five-line staff with the lyric "lan-stra" written above it. The notation includes notes, rests, and accidentals.



*rit.*  
*nocturne*

pas -  
sent  
sompne p p t -

*nocturne*

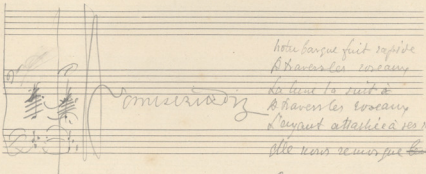
topus are à d'ens fidels  
pp en talon - au -

*deus*

rall. Ant. *Antico*

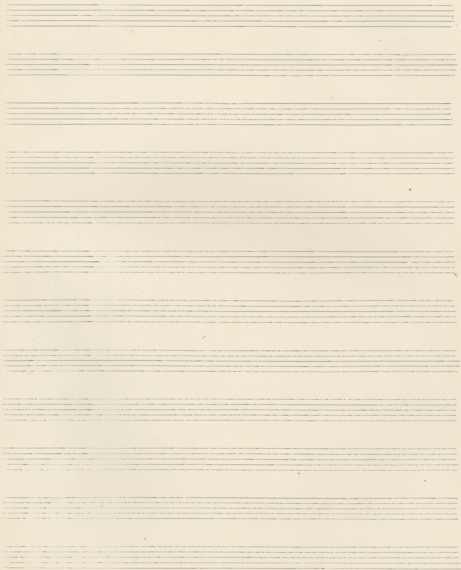


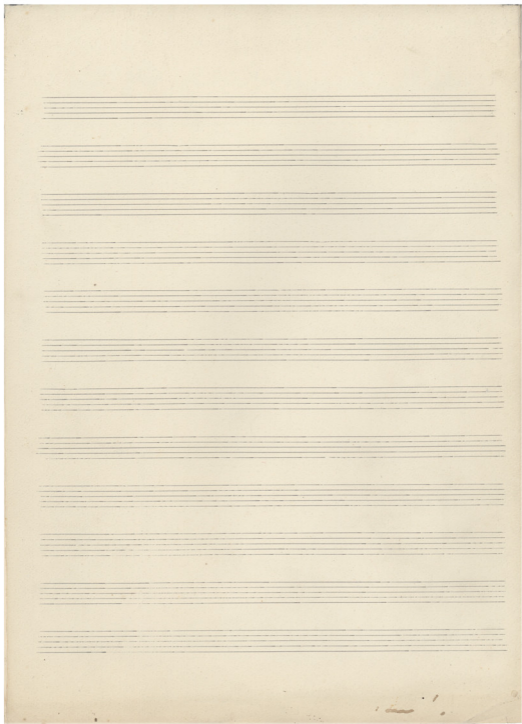
rit. *ritardando*

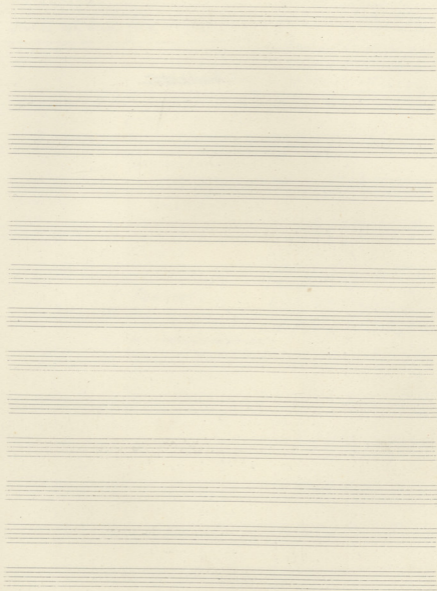


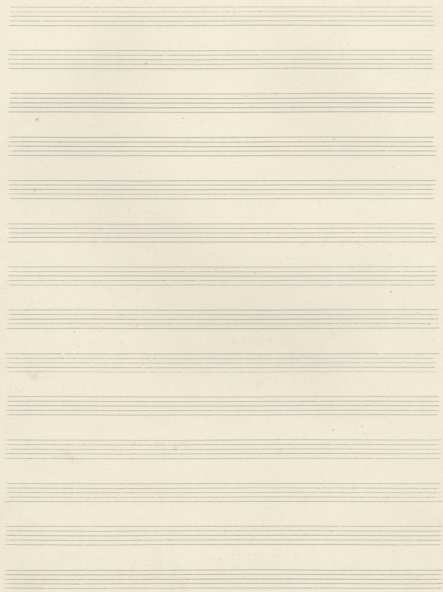
notre barque fuit rapide  
A travers les roseaux  
La lune la suit à  
A travers les roseaux  
L'oyseau attaché à ses rayons  
Où vous remarque l'écoulement.

Sur le ciel lointain  
Les oiseaux passent.









Oies sauvages.

Très lent P = 50.

II

clarinettes jouent - à trois vers les 20. seauy

Le bon plaisir. Tu n'as tant de plaisir toujours lointain.

une fois  
le 2<sup>e</sup> 8  
8.

**Allegro.** *M. Aph. toujours à temps*

*graziosa.* Le la ne nous suit à trois vers les 20. seauy

2 flûtes *pp*

2 clarinettes jouant.

*Rit poco clarinettes.* à deux

de quatre en fin au cas de à ses 20.

*pp*

*Rit poco.*

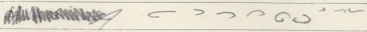
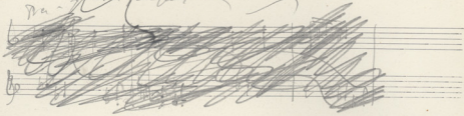
you Et le nous v. jouant à trois vers les 20. seauy

*pp*





Ma - Xmas Proques



Sablonique

