

Prelude aux vicissitudes de St-Jean de Lug. Louise Brada 20.

Assez lent  $\text{♩} = 108$ .

Handwritten musical notation for the first system, consisting of two staves. The upper staff features a complex melodic line with many beamed notes and slurs. The lower staff provides a harmonic accompaniment with chords and moving lines. Dynamics markings include *ff* and *f*.

Handwritten musical notation for the second system, consisting of two staves. The upper staff continues the melodic development with dense beaming. The lower staff has a more rhythmic accompaniment. A dynamic marking of *mf* is present.

Handwritten musical notation for the third system, consisting of two staves. The upper staff shows a melodic line with a *dim* marking. The lower staff has a more active accompaniment. A dynamic marking of *mf ass.* is present.

Handwritten musical notation for the fourth system, consisting of two staves. The upper staff features a melodic line with a *dim* marking. The lower staff has a more active accompaniment. A dynamic marking of *mf* is present.

Handwritten musical notation on a single staff with a treble clef. The notation consists of a dense sequence of notes, likely a melodic line or a complex chordal texture, spanning the entire staff. The notes are closely spaced, suggesting a fast tempo or a highly rhythmic passage.

A blank musical staff with five lines, serving as a separator between the first and second systems of notation.

Handwritten musical notation on two staves. The top staff has a treble clef and contains several measures of music with notes and rests. The bottom staff has a bass clef and contains more complex notation, including many beamed notes and rests, possibly representing a bass line or accompaniment.

A blank musical staff with five lines, serving as a separator between the second and third systems of notation.

Handwritten musical notation on two staves. The top staff has a treble clef and contains several measures of music with notes and rests. The bottom staff has a bass clef and contains more complex notation, including many beamed notes and rests, possibly representing a bass line or accompaniment.

A blank musical staff with five lines, serving as a separator between the third and fourth systems of notation.

Handwritten musical notation on two staves. The top staff has a treble clef and contains several measures of music with notes and rests. The bottom staff has a bass clef and contains more complex notation, including many beamed notes and rests, possibly representing a bass line or accompaniment.

A blank musical staff with five lines, serving as a separator between the fourth and fifth systems of notation.

A blank musical staff with five lines, serving as a separator between the fifth and sixth systems of notation.

Handwritten musical notation on a five-line staff. The music features a melodic line with eighth and sixteenth notes, and a bass line with chords. A dynamic marking 'mf' is present. There are some handwritten annotations above the staff, including a '3' and a '2'.

Handwritten musical notation on a five-line staff. The music is more complex, with many notes and some crossed-out sections. A dynamic marking 'f' is visible. There are several handwritten annotations, including arrows and 'x' marks.

*Allegro.*

Handwritten musical notation on a five-line staff. The music is very dense and fast, with many notes. A dynamic marking 'f' is present. There are some handwritten annotations, including a '3' and a '7'.

Handwritten musical notation on a five-line staff. The music features a melodic line with eighth notes and a bass line with chords. A dynamic marking 'meno f' is present. There are some handwritten annotations, including a 'Poco' marking.

Handwritten musical score for the first system, featuring two staves with complex rhythmic patterns and a key signature of one sharp (F#).

Handwritten musical score for the second system, including dynamic markings *p* and *mp*, and the tempo instruction *Allegretto D = 84*.

Handwritten musical score for the third system, showing dense musical notation with many notes and rests.

Handwritten musical score for the fourth system, concluding with a double bar line and some scribbled-out notes.

Handwritten musical score system 1. The system consists of two staves. The upper staff is in treble clef with a key signature of one sharp (F#) and a 3/4 time signature. It contains several measures of music, including a section with a 'rall.' (rallentando) marking. The lower staff is in bass clef and contains a dense, rhythmic accompaniment. There are some scribbles and corrections in the upper right portion of the system.

Handwritten musical score system 2. The system consists of two staves. The upper staff is in treble clef with a key signature of one sharp (F#) and a 3/4 time signature. It begins with the tempo marking 'Tempo res.' and contains several measures of music. The lower staff is in bass clef and contains a dense, rhythmic accompaniment. There are some scribbles and corrections in the upper right portion of the system.

Handwritten musical score system 3. The system consists of two staves. The upper staff is in treble clef with a key signature of one sharp (F#) and a 3/4 time signature. It contains several measures of music, including a section with a 'cres.' (crescendo) marking. The lower staff is in bass clef and contains a dense, rhythmic accompaniment. There are some scribbles and corrections in the upper right portion of the system.

Handwritten musical score system 4. The system consists of two staves. The upper staff is in treble clef with a key signature of one sharp (F#) and a 3/4 time signature. It contains several measures of music, including a section with a 'mf' (mezzo-forte) marking. The lower staff is in bass clef and contains a dense, rhythmic accompaniment. There are some scribbles and corrections in the upper right portion of the system.

Handwritten musical score, first system. The upper staff is in treble clef with a key signature of one sharp (F#) and a common time signature (C). It contains several measures of music with notes, rests, and dynamic markings such as *mf* and *mf*. The lower staff is in bass clef and contains a dense, multi-measure passage of notes, possibly representing a piano accompaniment or a complex rhythmic pattern.

Handwritten musical score, second system. The upper staff is in treble clef with a key signature of one sharp (F#) and a common time signature (C). It contains several measures of music with notes, rests, and dynamic markings such as *mf*. The lower staff is in bass clef and contains a dense, multi-measure passage of notes, possibly representing a piano accompaniment or a complex rhythmic pattern.

Handwritten musical score, third system. The upper staff is in treble clef with a key signature of one sharp (F#) and a common time signature (C). It contains several measures of music with notes, rests, and dynamic markings such as *mf*. The lower staff is in bass clef and contains a dense, multi-measure passage of notes, possibly representing a piano accompaniment or a complex rhythmic pattern.

Handwritten musical score, fourth system. The upper staff is in treble clef with a key signature of one sharp (F#) and a common time signature (C). It contains several measures of music with notes, rests, and dynamic markings such as *mf*. The lower staff is in bass clef and contains a dense, multi-measure passage of notes, possibly representing a piano accompaniment or a complex rhythmic pattern.

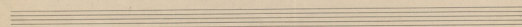
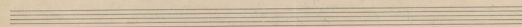
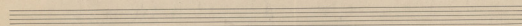
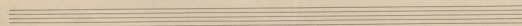
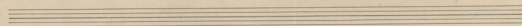
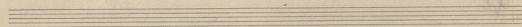
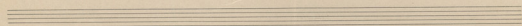
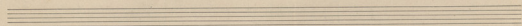
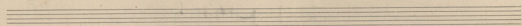
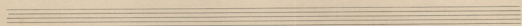
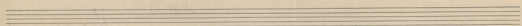
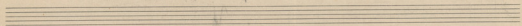
A single staff of handwritten musical notation. The notes are densely packed and connected by a long, sweeping slur that extends across the entire staff. The notation is somewhat obscured by the slurring and some ink bleed-through from the reverse side of the page.

*Mus lent ga' au commencement.*

Handwritten musical notation on a single staff. The piece begins with a dynamic marking of *pp* and a tempo marking of *Alla*. The notation includes various rhythmic values and rests. A tempo change to *rall* is indicated in the middle of the staff. The piece concludes with a final chord and a dynamic marking of *ppp*. There is a large, stylized signature or flourish on the right side of the staff.

Seven empty musical staves, each consisting of five horizontal lines, arranged vertically below the first staff.





II Sarabande pour la main droite.  
lent et unie  $\text{♩} = \frac{8}{4}$

Luile Riadis

Handwritten musical score, first system. It consists of two staves. The upper staff contains a melodic line with various ornaments and slurs. The lower staff contains a bass line with chords and some rhythmic notation.

Handwritten musical score, second system. It consists of two staves. The upper staff is heavily scribbled over with dark ink, obscuring the original notation. The lower staff contains some legible musical notation. Above the staves, the text "Risp. più mosso." is written.

Handwritten musical score, third system. It consists of two staves. The upper staff contains a melodic line with slurs and ornaments. The lower staff contains a bass line with chords. Above the staves, the text "Rit. moder. à tempo." is written.

Handwritten musical score, fourth system. It consists of two staves. The upper staff contains a melodic line with slurs and ornaments. The lower staff contains a bass line with chords. Above the staves, the text "L'Espresso" is written. At the bottom right of the page, the text "L'Espresso" is written.

*noia rall -* *ou*  
*tra, rasi, cabuya.*  
*sempre.*

This system contains two staves of handwritten musical notation. The top staff has a treble clef and the bottom staff has a bass clef. The music is dense with notes and rests. Annotations include "noia rall -" above the first staff, "ou" above the second staff, and "tra, rasi, cabuya." and "sempre." below the second staff. There are several large, sweeping scribbles over the lower part of the system.

*A tempo* *contando* *3* *5* *7* *9* *11* *13* *15* *17* *19* *21* *23* *25* *27* *29* *31* *33* *35* *37* *39* *41* *43* *45* *47* *49* *51* *53* *55* *57* *59* *61* *63* *65* *67* *69* *71* *73* *75* *77* *79* *81* *83* *85* *87* *89* *91* *93* *95* *97* *99* *101* *103* *105* *107* *109* *111* *113* *115* *117* *119* *121* *123* *125* *127* *129* *131* *133* *135* *137* *139* *141* *143* *145* *147* *149* *151* *153* *155* *157* *159* *161* *163* *165* *167* *169* *171* *173* *175* *177* *179* *181* *183* *185* *187* *189* *191* *193* *195* *197* *199* *201* *203* *205* *207* *209* *211* *213* *215* *217* *219* *221* *223* *225* *227* *229* *231* *233* *235* *237* *239* *241* *243* *245* *247* *249* *251* *253* *255* *257* *259* *261* *263* *265* *267* *269* *271* *273* *275* *277* *279* *281* *283* *285* *287* *289* *291* *293* *295* *297* *299* *301* *303* *305* *307* *309* *311* *313* *315* *317* *319* *321* *323* *325* *327* *329* *331* *333* *335* *337* *339* *341* *343* *345* *347* *349* *351* *353* *355* *357* *359* *361* *363* *365* *367* *369* *371* *373* *375* *377* *379* *381* *383* *385* *387* *389* *391* *393* *395* *397* *399* *401* *403* *405* *407* *409* *411* *413* *415* *417* *419* *421* *423* *425* *427* *429* *431* *433* *435* *437* *439* *441* *443* *445* *447* *449* *451* *453* *455* *457* *459* *461* *463* *465* *467* *469* *471* *473* *475* *477* *479* *481* *483* *485* *487* *489* *491* *493* *495* *497* *499* *501* *503* *505* *507* *509* *511* *513* *515* *517* *519* *521* *523* *525* *527* *529* *531* *533* *535* *537* *539* *541* *543* *545* *547* *549* *551* *553* *555* *557* *559* *561* *563* *565* *567* *569* *571* *573* *575* *577* *579* *581* *583* *585* *587* *589* *591* *593* *595* *597* *599* *601* *603* *605* *607* *609* *611* *613* *615* *617* *619* *621* *623* *625* *627* *629* *631* *633* *635* *637* *639* *641* *643* *645* *647* *649* *651* *653* *655* *657* *659* *661* *663* *665* *667* *669* *671* *673* *675* *677* *679* *681* *683* *685* *687* *689* *691* *693* *695* *697* *699* *701* *703* *705* *707* *709* *711* *713* *715* *717* *719* *721* *723* *725* *727* *729* *731* *733* *735* *737* *739* *741* *743* *745* *747* *749* *751* *753* *755* *757* *759* *761* *763* *765* *767* *769* *771* *773* *775* *777* *779* *781* *783* *785* *787* *789* *791* *793* *795* *797* *799* *801* *803* *805* *807* *809* *811* *813* *815* *817* *819* *821* *823* *825* *827* *829* *831* *833* *835* *837* *839* *841* *843* *845* *847* *849* *851* *853* *855* *857* *859* *861* *863* *865* *867* *869* *871* *873* *875* *877* *879* *881* *883* *885* *887* *889* *891* *893* *895* *897* *899* *901* *903* *905* *907* *909* *911* *913* *915* *917* *919* *921* *923* *925* *927* *929* *931* *933* *935* *937* *939* *941* *943* *945* *947* *949* *951* *953* *955* *957* *959* *961* *963* *965* *967* *969* *971* *973* *975* *977* *979* *981* *983* *985* *987* *989* *991* *993* *995* *997* *999* *1001* *1003* *1005* *1007* *1009* *1011* *1013* *1015* *1017* *1019* *1021* *1023* *1025* *1027* *1029* *1031* *1033* *1035* *1037* *1039* *1041* *1043* *1045* *1047* *1049* *1051* *1053* *1055* *1057* *1059* *1061* *1063* *1065* *1067* *1069* *1071* *1073* *1075* *1077* *1079* *1081* *1083* *1085* *1087* *1089* *1091* *1093* *1095* *1097* *1099* *1101* *1103* *1105* *1107* *1109* *1111* *1113* *1115* *1117* *1119* *1121* *1123* *1125* *1127* *1129* *1131* *1133* *1135* *1137* *1139* *1141* *1143* *1145* *1147* *1149* *1151* *1153* *1155* *1157* *1159* *1161* *1163* *1165* *1167* *1169* *1171* *1173* *1175* *1177* *1179* *1181* *1183* *1185* *1187* *1189* *1191* *1193* *1195* *1197* *1199* *1201* *1203* *1205* *1207* *1209* *1211* *1213* *1215* *1217* *1219* *1221* *1223* *1225* *1227* *1229* *1231* *1233* *1235* *1237* *1239* *1241* *1243* *1245* *1247* *1249* *1251* *1253* *1255* *1257* *1259* *1261* *1263* *1265* *1267* *1269* *1271* *1273* *1275* *1277* *1279* *1281* *1283* *1285* *1287* *1289* *1291* *1293* *1295* *1297* *1299* *1301* *1303* *1305* *1307* *1309* *1311* *1313* *1315* *1317* *1319* *1321* *1323* *1325* *1327* *1329* *1331* *1333* *1335* *1337* *1339* *1341* *1343* *1345* *1347* *1349* *1351* *1353* *1355* *1357* *1359* *1361* *1363* *1365* *1367* *1369* *1371* *1373* *1375* *1377* *1379* *1381* *1383* *1385* *1387* *1389* *1391* *1393* *1395* *1397* *1399* *1401* *1403* *1405* *1407* *1409* *1411* *1413* *1415* *1417* *1419* *1421* *1423* *1425* *1427* *1429* *1431* *1433* *1435* *1437* *1439* *1441* *1443* *1445* *1447* *1449* *1451* *1453* *1455* *1457* *1459* *1461* *1463* *1465* *1467* *1469* *1471* *1473* *1475* *1477* *1479* *1481* *1483* *1485* *1487* *1489* *1491* *1493* *1495* *1497* *1499* *1501* *1503* *1505* *1507* *1509* *1511* *1513* *1515* *1517* *1519* *1521* *1523* *1525* *1527* *1529* *1531* *1533* *1535* *1537* *1539* *1541* *1543* *1545* *1547* *1549* *1551* *1553* *1555* *1557* *1559* *1561* *1563* *1565* *1567* *1569* *1571* *1573* *1575* *1577* *1579* *1581* *1583* *1585* *1587* *1589* *1591* *1593* *1595* *1597* *1599* *1601* *1603* *1605* *1607* *1609* *1611* *1613* *1615* *1617* *1619* *1621* *1623* *1625* *1627* *1629* *1631* *1633* *1635* *1637* *1639* *1641* *1643* *1645* *1647* *1649* *1651* *1653* *1655* *1657* *1659* *1661* *1663* *1665* *1667* *1669* *1671* *1673* *1675* *1677* *1679* *1681* *1683* *1685* *1687* *1689* *1691* *1693* *1695* *1697* *1699* *1701* *1703* *1705* *1707* *1709* *1711* *1713* *1715* *1717* *1719* *1721* *1723* *1725* *1727* *1729* *1731* *1733* *1735* *1737* *1739* *1741* *1743* *1745* *1747* *1749* *1751* *1753* *1755* *1757* *1759* *1761* *1763* *1765* *1767* *1769* *1771* *1773* *1775* *1777* *1779* *1781* *1783* *1785* *1787* *1789* *1791* *1793* *1795* *1797* *1799* *1801* *1803* *1805* *1807* *1809* *1811* *1813* *1815* *1817* *1819* *1821* *1823* *1825* *1827* *1829* *1831* *1833* *1835* *1837* *1839* *1841* *1843* *1845* *1847* *1849* *1851* *1853* *1855* *1857* *1859* *1861* *1863* *1865* *1867* *1869* *1871* *1873* *1875* *1877* *1879* *1881* *1883* *1885* *1887* *1889* *1891* *1893* *1895* *1897* *1899* *1901* *1903* *1905* *1907* *1909* *1911* *1913* *1915* *1917* *1919* *1921* *1923* *1925* *1927* *1929* *1931* *1933* *1935* *1937* *1939* *1941* *1943* *1945* *1947* *1949* *1951* *1953* *1955* *1957* *1959* *1961* *1963* *1965* *1967* *1969* *1971* *1973* *1975* *1977* *1979* *1981* *1983* *1985* *1987* *1989* *1991* *1993* *1995* *1997* *1999* *2001* *2003* *2005* *2007* *2009* *2011* *2013* *2015* *2017* *2019* *2021* *2023* *2025* *2027* *2029* *2031* *2033* *2035* *2037* *2039* *2041* *2043* *2045* *2047* *2049* *2051* *2053* *2055* *2057* *2059* *2061* *2063* *2065* *2067* *2069* *2071* *2073* *2075* *2077* *2079* *2081* *2083* *2085* *2087* *2089* *2091* *2093* *2095* *2097* *2099* *2101* *2103* *2105* *2107* *2109* *2111* *2113* *2115* *2117* *2119* *2121* *2123* *2125* *2127* *2129* *2131* *2133* *2135* *2137* *2139* *2141* *2143* *2145* *2147* *2149* *2151* *2153* *2155* *2157* *2159* *2161* *2163* *2165* *2167* *2169* *2171* *2173* *2175* *2177* *2179* *2181* *2183* *2185* *2187* *2189* *2191* *2193* *2195* *2197* *2199* *2201* *2203* *2205* *2207* *2209* *2211* *2213* *2215* *2217* *2219* *2221* *2223* *2225* *2227* *2229* *2231* *2233* *2235* *2237* *2239* *2241* *2243* *2245* *2247* *2249* *2251* *2253* *2255* *2257* *2259* *2261* *2263* *2265* *2267* *2269* *2271* *2273* *2275* *2277* *2279* *2281* *2283* *2285* *2287* *2289* *2291* *2293* *2295* *2297* *2299* *2301* *2303* *2305* *2307* *2309* *2311* *2313* *2315* *2317* *2319* *2321* *2323* *2325* *2327* *2329* *2331* *2333* *2335* *2337* *2339* *2341* *2343* *2345* *2347* *2349* *2351* *2353* *2355* *2357* *2359* *2361* *2363* *2365* *2367* *2369* *2371* *2373* *2375* *2377* *2379* *2381* *2383* *2385* *2387* *2389* *2391* *2393* *2395* *2397* *2399* *2401* *2403* *2405* *2407* *2409* *2411* *2413* *2415* *2417* *2419* *2421* *2423* *2425* *2427* *2429* *2431* *2433* *2435* *2437* *2439* *2441* *2443* *2445* *2447* *2449* *2451* *2453* *2455* *2457* *2459* *2461* *2463* *2465* *2467* *2469* *2471* *2473* *2475* *2477* *2479* *2481* *2483* *2485* *2487* *2489* *2491* *2493* *2495* *2497* *2499* *2501* *2503* *2505* *2507* *2509* *2511* *2513* *2515* *2517* *2519* *2521* *2523* *2525* *2527* *2529* *25*

*Pochissimo meno mosso*

*Squ. Pady*

III. Rhapsodie Célèbre et Finale.

Violoncelle d. = 89.

Handwritten musical score for Violoncelle, titled "III. Rhapsodie Célèbre et Finale." The score is written on ten systems of staves, each with a treble and bass clef. The music is in 3/4 time and features complex rhythmic patterns, including triplets and sixteenth notes. The key signature has one sharp (F#). The score includes various performance markings such as "tra" above the staves and "p" and "f" below. The notation is dense and characteristic of 19th-century manuscript notation.

Handwritten musical score, first system. The top staff is in treble clef with a key signature of one sharp (F#) and a common time signature (C). The bottom staff is in bass clef. The music features a melodic line in the treble and a harmonic accompaniment in the bass. A wavy line above the first few notes of the treble staff is labeled "su".

Handwritten musical score, second system. The top staff is in treble clef and the bottom staff is in bass clef. The notation continues with various rhythmic values and accidentals.

Handwritten musical score, third system. The top staff is in treble clef and the bottom staff is in bass clef. The music shows a continuation of the melodic and harmonic themes.

Handwritten musical score, fourth system. The top staff is in treble clef and the bottom staff is in bass clef. The notation includes complex rhythmic patterns and chordal structures.

Handwritten musical score, fifth system. The top staff is in treble clef and the bottom staff is in bass clef. The music features a dense texture with many notes and accidentals.

Handwritten musical score, sixth system. The top staff is in treble clef and the bottom staff is in bass clef. The notation concludes with a final cadence and some decorative flourishes.





Handwritten musical notation, first system. The top staff contains a melodic line with various rhythmic values and accidentals. The bottom staff contains a bass line with chords and rests. The key signature has one flat (B-flat).

Handwritten musical notation, second system. The top staff continues the melodic line. The bottom staff shows a series of chords and rests, with some dynamic markings like *mf*.

Handwritten musical notation, third system. The top staff features a melodic line with some complex rhythmic patterns. The bottom staff contains chords and rests, with some accidentals.

Handwritten musical notation, fourth system. The top staff continues the melodic line. The bottom staff shows a series of chords and rests, with some dynamic markings like *mf*.

Handwritten musical notation, fifth system. The top staff continues the melodic line. The bottom staff shows a series of chords and rests, with some dynamic markings like *mf*.

Handwritten musical notation, sixth system. The top staff continues the melodic line. The bottom staff shows a series of chords and rests, with some dynamic markings like *mf*. The system ends with a double bar line and a repeat sign.

Handwritten musical notation for the first system. The top staff is a treble clef staff containing a melodic line with various accidentals and slurs. The bottom staff is a bass clef staff with a bass line, including notes, rests, and dynamic markings such as *mf* and *mf.* There are also some handwritten annotations above the bass staff, including a large scribble and some symbols.

Handwritten musical notation for the second system. The top staff is a treble clef staff with a melodic line. The bottom staff is a bass clef staff with a bass line. This system includes a large scribble on the left side of the bass staff and various musical notations including notes, rests, and dynamic markings like *mf.* and *mf.*

Handwritten musical notation for the third system. The top staff is a treble clef staff with a melodic line. The bottom staff is a bass clef staff with a bass line. This system contains several measures with notes, rests, and dynamic markings such as *mf.* and *mf.*

Handwritten musical notation for the fourth system. The top staff is a treble clef staff with a melodic line. The bottom staff is a bass clef staff with a bass line. This system includes notes, rests, and dynamic markings like *mf.* and *mf.*

Handwritten musical score, first system. The top staff contains a melodic line with slurs and accents. The middle staff contains a bass line with a large slur and a fermata. The bottom staff is mostly empty with a few notes. The word "ral." is written above the top staff.

Handwritten musical score, second system. The top staff has a melodic line with a "tamp." marking. The middle staff has a bass line with a fermata. The bottom staff has a melodic line with a fermata.

Handwritten musical score, third system. The top staff has a melodic line with slurs. The middle staff has a bass line with a fermata. The bottom staff has a melodic line with a fermata.

Handwritten musical score, fourth system. The top staff has a melodic line with slurs. The middle staff has a bass line with a fermata. The bottom staff has a melodic line with a fermata. The word "sempre" is written above the bottom staff.

Handwritten musical score, fifth system. The top staff has a melodic line with slurs. The middle staff has a bass line with a fermata. The bottom staff has a melodic line with a fermata. The word "sempre" is written above the bottom staff.

Handwritten musical score, sixth system. The top staff has a melodic line with slurs. The middle staff has a bass line with a fermata. The bottom staff has a melodic line with a fermata.

Handwritten musical score on five staves. The notation includes treble and bass clefs, various time signatures, and complex rhythmic patterns. The score is heavily annotated with handwritten notes and symbols.

Annotations include:

- rit.* (ritardando) at the top left.
- rit.* in the middle section.
- rit.* at the bottom left.
- Allegro nuovo nuovo e marcato molto* written across the middle staff.
- Allegro* written above the middle staff.

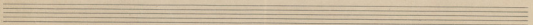
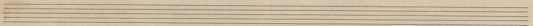
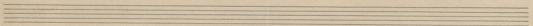
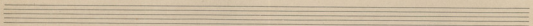
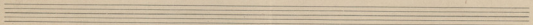
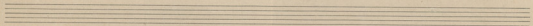
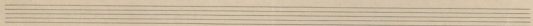
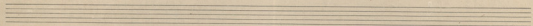
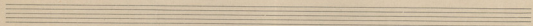
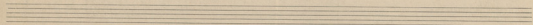
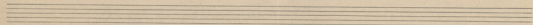
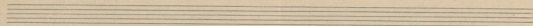
Handwritten musical score on two staves. The notation includes treble and bass clefs and complex rhythmic patterns.

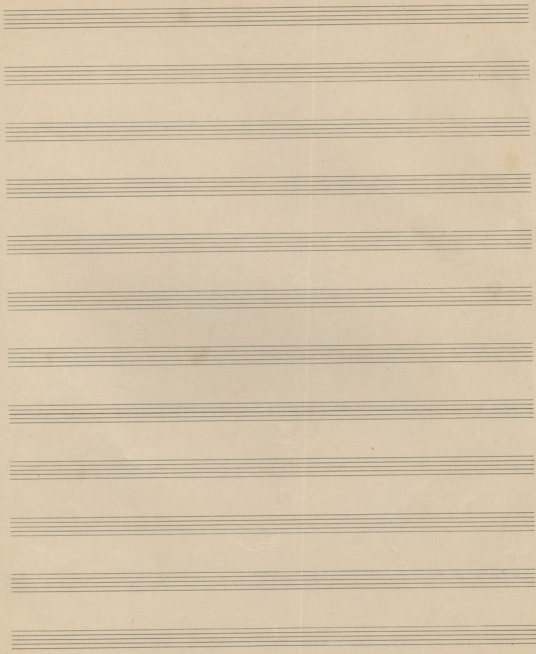
Annotation: *in fine. Paddy* written in the right margin.

Handwritten musical score on three staves. The notation includes treble and bass clefs and complex rhythmic patterns.

Annotations include:

- ral* (rallentando) written above the first staff.
- nuovo nuovo* written above the second staff.
- rit.* written above the third staff.
- rit.* written below the third staff.





Rudolf Schmitt

Hohenzollernstadt 6.