

desodaly.

Handwritten musical score for a piece titled "desodaly". The score is written on aged, yellowed paper and consists of several systems of staves. The top system features a vocal line with lyrics "injan bap" and a piano accompaniment. The second system continues the vocal line with lyrics "palle ric - mampi" and includes a tempo marking "♩ = 80". The third system shows the vocal line with lyrics "si labi do -" and "ta. vocu". The score includes various musical notations such as clefs, time signatures (5/8, 4/8, 3/8, 6/8), and dynamic markings like "mf". There are also some handwritten annotations and corrections throughout the piece.

Handwritten musical notation on a single staff, possibly a continuation or a specific rhythmic pattern.

2. *Blump*

Kali si si

Ki su

sa-ri as-ya sa-orix lu

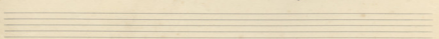
us e-ri-ra sahan sa-p-De su was uai

us e-ri-ra sahan sa-p-De su was uai

13

13

Prabasi



Andante, 3.

Handwritten musical notation for the first system. It consists of three staves. The top staff is a vocal line with lyrics: "Kai mi dia - re - Sen e -". The middle staff is a piano accompaniment with a complex rhythmic pattern. The bottom staff is a bass line with a simple harmonic accompaniment. The key signature has two flats (B-flat and E-flat), and the time signature is 3/8.

Handwritten musical notation for the second system. It consists of three staves. The top staff is a vocal line with lyrics: "Kai va Kai o - x -". The middle staff is a piano accompaniment with a complex rhythmic pattern. The bottom staff is a bass line with a simple harmonic accompaniment. The key signature has two flats (B-flat and E-flat), and the time signature is 3/8.

Handwritten musical notation for the third system. It consists of three staves. The top staff is a vocal line with lyrics: "Ais a -". The middle staff is a piano accompaniment with a complex rhythmic pattern. The bottom staff is a bass line with a simple harmonic accompaniment. The key signature has two flats (B-flat and E-flat), and the time signature is 3/8.

Handwritten musical notation for the fourth system, consisting of three empty staves.

r.

Handwritten musical score for the first system, featuring three staves with treble clefs and a 9/8 time signature. The music includes various notes, rests, and dynamic markings.

Kia rixapai a'oi a'owon

Kaip'ingra'ama

Handwritten musical score for the second system, featuring three staves with treble clefs and an 11/8 time signature. It includes lyrics in a non-Latin script and Latin characters.

Rai na - li pa' ni - ba-on'is Rai kap' dia - ow uia' ra

ai - pa' ma' g' ni - da -

Handwritten musical score for the third system, featuring three staves with treble clefs and a 5/8 time signature. It includes lyrics in a non-Latin script and Latin characters.

X'ba' a'ona

ow

ai' ai' yu - ai - ow uia' lo pa' - ow

ms a' - ra - ra ai' yu' xi' yu'

Handwritten musical score for the fourth system, featuring three staves with treble clefs and a 5/8 time signature. The music is partially obscured by scribbles.

Handwritten musical notation on a system of three staves. The top staff contains a vocal line with lyrics: "no on c' -", "si - on", "bi -", "bi -", "ca". The middle staff contains a piano accompaniment with dense chordal textures. The bottom staff contains a bass line with notes and rests.

Handwritten musical notation on a system of three staves. The top staff contains a vocal line with lyrics: "on", "Rai", "Rai". The middle staff contains a piano accompaniment with complex rhythmic patterns and some crossed-out sections. The bottom staff contains a bass line.

Handwritten musical notation on a system of three staves. The top staff contains a vocal line with lyrics: "to - u -", "p -", "on", "on", "on", "on". The middle staff contains a piano accompaniment with various time signatures and complex textures. The bottom staff contains a bass line.

Handwritten musical notation on a system of two staves. The top staff contains a piano accompaniment with the label "piano partem" above it. The bottom staff contains a bass line with the label "of dacham" above it. The notation includes rhythmic markings and some numerical indicators.

Adagio piano

Handwritten musical score for the first system. It consists of three staves: a vocal line and two piano accompaniment staves. The vocal line begins with the lyrics "no re' ai ra to la upo". The piano accompaniment features complex chordal textures and arpeggiated patterns.

Handwritten musical score for the second system. It consists of three staves: a vocal line and two piano accompaniment staves. The vocal line begins with the lyrics "no mai to so'u us". The piano accompaniment continues with intricate harmonic and melodic lines.

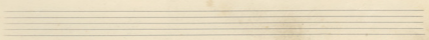
Handwritten musical score for the third system. It consists of three staves: a vocal line and two piano accompaniment staves. The vocal line begins with the lyrics "kai zis pa' eris to' sa' pu' re tis lu". The piano accompaniment features a mix of block chords and flowing arpeggios.

A single staff of handwritten musical notation at the bottom of the page, which appears to be a continuation or a separate piece of music, possibly a bass line or a specific instrumental part.

Handwritten musical score for the first system. The vocal line is in G major, 4/4 time, with lyrics: "ni - mus old - mus - Kai - zars xo". The piano accompaniment features a complex texture with triplets and sixteenth-note patterns in both hands.

Handwritten musical score for the second system. The vocal line continues with lyrics: "pa - ni mu - ni - pa - ni - mu - Kai - os - de - po - si". The piano accompaniment includes a handwritten note: "och spetsial". The system concludes with a double bar line and a repeat sign.

Handwritten musical score for the third system. The vocal line has lyrics: "na - dos - x - i - mu - ni - x - i - a". The piano accompaniment is heavily crossed out with a large 'X' drawn across the entire system, indicating that this section is to be omitted or is a correction.



x.

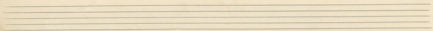
Handwritten musical score for the first system, consisting of three staves. The top staff is in 3/4 time, the middle in 2/4, and the bottom in 2/4. The music includes various rhythmic figures, including sixteenth and thirty-second notes, and rests. Dynamic markings include *mf*, *dim.*, and *mf*. There are also some handwritten annotations like "m" and "a".

acc. rit. *ral.*

Handwritten musical score for the second system, also consisting of three staves. The tempo changes from *mf* to *acc. rit.* and then to *ral.* (rallentando). The music features complex rhythmic patterns and dynamic markings such as *mf*, *acc. rit.*, and *ral.*. There are some handwritten annotations like "b" and "3".

Andantino $\frac{3}{4}$ = 100 $\frac{3}{4}$ 60.

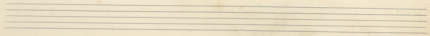
Handwritten musical score for the third system, consisting of three staves. The top staff is in 2/4 time, the middle in 2/4, and the bottom in 2/4. The music includes various rhythmic figures, including sixteenth and thirty-second notes, and rests. Dynamic markings include *mf*, *mf*, and *mf*. There are also some handwritten annotations like "a", "a", and "a".



Handwritten musical score for the first system, featuring vocal lines and piano accompaniment. The lyrics are: "Eip - - - i - - -".

Handwritten musical score for the second system, featuring vocal lines and piano accompaniment. The lyrics are: "leu - ji - - - or is hoc - a - - -".

Handwritten musical score for the third system, featuring vocal lines and piano accompaniment. The lyrics are: "zu - - - a - - -".



Handwritten musical score, first system. It consists of three staves. The top staff is a vocal line with lyrics: "Jin on zu nai - pa". The middle staff is a piano accompaniment with a complex, rhythmic pattern. The bottom staff is a bass line with a similar rhythmic pattern. The music is written in a key with one flat (B-flat) and a 4/4 time signature.

Handwritten musical score, second system. It consists of three staves. The top staff is a vocal line with lyrics: "ci - zu - na - ba - boi -". The middle staff is a piano accompaniment. The bottom staff is a bass line. The music continues in the same key and time signature as the first system.

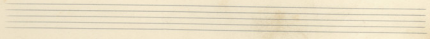
Handwritten musical score, third system. It consists of three staves. The top staff is a vocal line with lyrics: "du - ni zu yu - xa". The middle staff is a piano accompaniment. The bottom staff is a bass line. The music concludes in this system.

Baccarolle ~~~~~
 Musical notation for a Baccarolle, showing a treble clef, a key signature of one flat, and a series of notes and rests.

Handwritten musical score system 1. It consists of three staves. The top staff is a vocal line with lyrics: "ov - u - ra - ov - pas". The middle staff contains chords and some melodic fragments. The bottom staff is a piano accompaniment with a complex rhythmic pattern. The system is divided into three measures with various time signatures and key signatures.

Handwritten musical score system 2. It consists of three staves. The top staff has lyrics: "zu - si -". The middle staff contains chords and melodic lines. The bottom staff is a piano accompaniment. The system is divided into three measures with various time signatures and key signatures.

Handwritten musical score system 3. It consists of three staves. The top staff has lyrics: "pas - K'cip -". The middle staff contains chords and melodic lines. The bottom staff is a piano accompaniment. The system is divided into three measures with various time signatures and key signatures.



Handwritten musical score, first system. It consists of three staves: a vocal line in G-clef, a piano accompaniment in G-clef, and a bass line in C-clef. The music is in common time (C) and features a 3/4 time signature. The lyrics are written below the vocal line.

Vocal line: *ju nō dā hōc - dū pū zū eu - xā*

Piano accompaniment: *mf.*

Handwritten musical score, second system. It consists of three staves: a vocal line in G-clef, a piano accompaniment in G-clef, and a bass line in C-clef. The music is in common time (C) and features a 3/4 time signature. The lyrics are written below the vocal line.

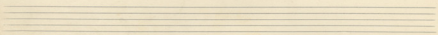
Vocal line: *ou xūc - tū ou zā*

Piano accompaniment: *acc.*

Handwritten musical score, third system. It consists of three staves: a vocal line in G-clef, a piano accompaniment in G-clef, and a bass line in C-clef. The music is in common time (C) and features a 3/4 time signature. The lyrics are written below the vocal line.

Vocal line: *di rūs vūc - cūc tū a'cip' s'*

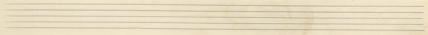
Piano accompaniment: *ff*



Handwritten musical score system 1. It consists of three staves: vocal line, piano accompaniment, and bass line. The vocal line has lyrics "ju no da na -" and "K'i". The piano accompaniment features a complex, rhythmic pattern with many beamed notes. The bass line has chords with flats.

Handwritten musical score system 2. It consists of three staves: vocal line, piano accompaniment, and bass line. The vocal line has lyrics "ju no da na" and "oh". The piano accompaniment continues with a similar rhythmic pattern. The bass line has chords with flats. Dynamics include *mf* and *acc.*

Handwritten musical score system 3. It consists of three staves: vocal line, piano accompaniment, and bass line. The vocal line has lyrics "ow" and "le' oin a'". The piano accompaniment continues with a similar rhythmic pattern. The bass line has chords with flats. Dynamics include *ff* and *mf*. There are some markings like "2." and "4" above the piano staff.



Handwritten musical score, first system. The top staff contains a vocal line with lyrics "ca - ra - ra - ra - ra - ra". The middle staff contains a piano accompaniment with complex chordal textures. The bottom staff contains a bass line with notes and rests.

Handwritten musical score, second system. The top staff contains a vocal line with lyrics "Ri - an - da - ce - cor - ra - ra". The middle staff contains a piano accompaniment with complex chordal textures. The bottom staff contains a bass line with notes and rests. Tempo marking: $\text{Andante} = 72$. Dynamic marking: ff .

Handwritten musical score, third system. The top staff contains a vocal line with lyrics "ca - ri - an - da - ce - cor - ra - ra". The middle staff contains a piano accompaniment with complex chordal textures. The bottom staff contains a bass line with notes and rests.

rit ~~1/2~~ $\frac{3}{2}$

ma - Ri - ba - pi - sou - ra - st - gra - pi - ta - ba

fff *Molto.*

rit.

psa - la - oi - na - ra - pa - ra - cu - pa

ff cresc.

mo - le - rit - no - ca - sa - oi - xa - cu

molto cresc.

rit.

pp.

And.

And.

And.

7 Mus

$\text{♩} = 46$
Moderato *And.*

Volante

da- jao vis di rã di- in - di-ya na-jã-tis-lãp-ya tã

con più dolce luttoloinstans. p. f.

ni rã-di-ya to sop-pã-ua ov, ad-ras-apa mi zã-ey-gã-er-ai ai

Andant. P. 80.

l'ao - - - - - zãp-ya - - - - -

m. f. armonioso.

Chants du Harem — 9.
Harem

Handwritten musical score for the first system. It consists of three staves: a vocal line and two piano accompaniment staves. The key signature has two flats (Bb, Eb) and the time signature is 3/4. The lyrics are: "ca' au la na - la - na cor - - - ipa in oui tis da - gas - oss". The piano accompaniment features a rhythmic pattern of eighth and sixteenth notes. The system ends with a fermata over the final notes.

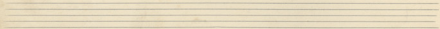
Handwritten musical score for the second system. It consists of three staves. The key signature has two flats (Bb, Eb) and the time signature is 3/4. The lyrics are: "sai sai sa'o lip - ja". The piano accompaniment continues with a similar rhythmic pattern. The system ends with a fermata over the final notes.

Handwritten musical score for the third system. It consists of three staves. The key signature has two flats (Bb, Eb) and the time signature is 3/4. The lyrics are: "ky la - no da - nas a'af' a' spu xi sui an - so -". The piano accompaniment continues with a similar rhythmic pattern. The system ends with a fermata over the final notes.

Handwritten musical score, first system. The vocal line (top staff) contains the lyrics: "ni' a-ry-da-rea' - au so". The piano accompaniment consists of two staves (treble and bass clef) with complex chordal textures and melodic lines. The key signature has one sharp (F#) and the time signature is 3/8.

Handwritten musical score, second system. The vocal line (top staff) contains the lyrics: "rea - au ni' no - du - pa - ju - so in no - u - na, ad". The piano accompaniment continues with complex textures. The key signature has one sharp (F#) and the time signature is 3/8.

Handwritten musical score, third system. The vocal line (top staff) contains the lyrics: "au - a - no -". The piano accompaniment continues with complex textures. The key signature has one sharp (F#) and the time signature is 3/8.



Mu. lento.

Handwritten musical score for the first system. It consists of three staves. The top staff is a vocal line with lyrics: "l'è-dre-ma l'è-ye x'u par-sai zè ri". The middle and bottom staves are piano accompaniment. The key signature has one sharp (F#) and the time signature is 5/8. There are various musical notations including slurs, accents, and dynamic markings.

Handwritten musical score for the second system. It consists of three staves. The top staff is a vocal line with lyrics: "pa-ma' zà-ye zà-antà-di om-mo' dia...". The middle and bottom staves are piano accompaniment. The key signature has one sharp (F#) and the time signature is 2/4. There are various musical notations including slurs, accents, and dynamic markings.

Tempo ma.

Proprio 1 = 132

Handwritten musical score for the third system. It consists of three staves. The top staff is a vocal line with lyrics: "A. w! por-nu-ria". The middle and bottom staves are piano accompaniment. The key signature has one sharp (F#) and the time signature is 2/4. There are various musical notations including slurs, accents, and dynamic markings.

A. And. mosso.

Handwritten musical score for the fourth system. It consists of two staves. The top staff is piano accompaniment. The key signature has one sharp (F#) and the time signature is 2/4. There are various musical notations including slurs, accents, and dynamic markings.

41- lu po sa- xpi- a uai

Tutti

na om nou Ep-i-ju - a mi-xa-ct po-uae

Adagio
Cui barri

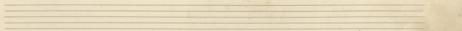
mi-ri-ta- rone- re- mpe- uae- uae- lia- li- pa- e

Fine
Cui barri

Handwritten musical score for the first system. It features a vocal line and a piano accompaniment. The vocal line is in 5/4 time and contains the lyrics: "ri-ba-ri3 as lo pi-er-ri so-uis tu yu-xa os-". The piano accompaniment includes a treble clef staff with a complex rhythmic pattern and a bass clef staff with chords. A dynamic marking "Bra" is present.

Handwritten musical score for the second system. The vocal line continues with the lyrics: "es za xu-ria so-uis cui sup-dia so". The piano accompaniment continues with similar complex rhythmic patterns. A dynamic marking "mf" is present.

Handwritten musical score for the third system. The vocal line contains the lyrics: "Rui ja-zi n'a-ra-occi ces-occi". The piano accompaniment continues with complex rhythmic patterns. A dynamic marking "ff" is present.



Handwritten musical score, first system. It consists of two staves. The top staff is a vocal line with lyrics: *mie no-ua' ju- di- o' dno'*. The bottom staff is a piano accompaniment with a complex rhythmic pattern of chords and sixteenth notes. The key signature has one sharp (F#) and the time signature is 5/4. The system is divided into two measures.

Handwritten musical score, second system. It consists of two staves. The top staff has lyrics: *in' zois yo' uous rav - fae*. The bottom staff continues the piano accompaniment. The system is divided into two measures, with a *rall.* marking in the first measure and a *rit. alto.* marking in the second.

Handwritten musical score, third system. It consists of three staves. The top staff has the word *zun* written below it. The middle staff contains a large, simple graphic or symbol consisting of a horizontal oval with vertical lines inside. The bottom staff has lyrics: *rese susproce*. The system is divided into two measures. The first measure is marked *mf* and the second is marked *fff*.