

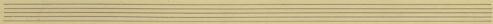
Pastorale *lento* ♩ = 69

Handwritten musical score for the first system, featuring a vocal line and piano accompaniment. The lyrics are: "Liliputian, Liliputian, Liliputian, Liliputian, Liliputian, Liliputian, Liliputian, Liliputian, Liliputian, Liliputian." The piano part includes fingerings 1, 2, and 3.

Plus *lento* et *bristain* ♩ = 54

Handwritten musical score for the second system, featuring a vocal line and piano accompaniment. The lyrics are: "Liliputian, Liliputian, Liliputian, Liliputian, Liliputian, Liliputian, Liliputian, Liliputian, Liliputian, Liliputian." The piano part includes fingerings 1, 2, 3, and 4.

Handwritten musical score for the third system, featuring a vocal line and piano accompaniment. The lyrics are: "Liliputian, Liliputian, Liliputian, Liliputian, Liliputian, Liliputian, Liliputian, Liliputian, Liliputian, Liliputian." The piano part includes fingerings 1, 2, 3, and 4.



Handwritten musical score for the first system. It features a vocal line and a piano accompaniment. The tempo is marked *Andante* and the dynamics include *mp.* and *pp.*. The lyrics "uoniam" are written above the vocal line. The piano part has a complex rhythmic pattern with many beamed notes.

uoniam 4/4 4/5

mp.

pp.

Tempo celere.

pp.

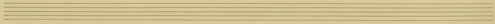
Handwritten musical score for the second system. It continues the vocal and piano parts. The lyrics "cum dicitur - hanc in - diuinitate ad -" are written below the vocal line. The piano accompaniment is dense with many beamed notes.

cum dicitur - hanc in - diuinitate ad -

Handwritten musical score for the third system. It continues the vocal and piano parts. The lyrics "deum qui a patre genitum" are written below the vocal line. The piano accompaniment is dense with many beamed notes. The system ends with a double bar line and a *rit.* marking.

deum qui a patre genitum

rit.



1ma 4da

Plur Cant 1 = 54

W - e - u - w - e - u -
 - - - - -
 - - - - -

W - e - u, ca - sa - pa - tris - si - li - ce, pro - ce - di - ti - qui - e
 lo - cutus es

pp

à - que - rum - qui - se - dit ad dex - te - ram pa - tris, si - gle - ni - genitus, et
 con - sub - stantialis pa - tris, qui ex - pat - ri - bus pro - ce - dit, et
 cum pa - tre si - mul ad - oratus et con - glori - ficatus, qui lo - cutus
 est per pro - phetas.

ppp

Tempo 1mo

de - us - qui de - o - ce - les - tis pro - ce - dit, et
 de - us, qui de - o - ce - les - tis pro - ce - dit, et
 de - us, qui de - o - ce - les - tis pro - ce - dit, et

