

Lento e lmo

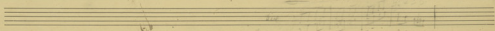
A Tempo

Poco Meno mosso = 172

Handwritten musical score for the first system, featuring a vocal line and piano accompaniment. The lyrics are: "Ka-ri-pi-phi - gi-nai-ma - sa-mis di Gi-mi di Gi-mai di-pi-ha". The piano part includes dynamic markings such as *mf* and *f*.

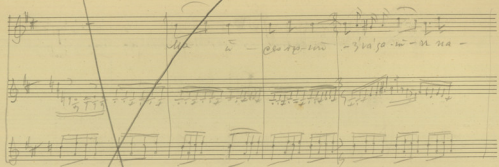
Handwritten musical score for the second system, continuing the vocal and piano parts. The lyrics are: "Ka-nis - Ka-nis". The piano part features a prominent *ff* dynamic marking and includes a *rit.* (ritardando) section.

Handwritten musical score for the third system, concluding the piece. The lyrics are: "Ka-nis di-pi-ha - di-pi-ha". The piano part includes a *rall. And. Canto* marking and ends with a large *A* marking.

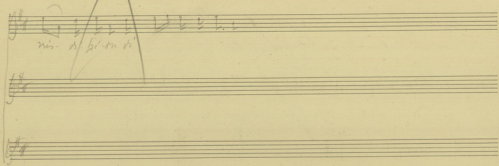


3) *Allegro* ex. Long

*Ad Tempo* - *Molto piu lento* :=



*na - ce - rta - men - te - so - no - no - na -*



*no - na - ce - rta - men - te*

