

tr. *al. viv.* *car de l'air* *En se-ron*

o *mes jo-* *ci* *Se* *e* *des* *caux.*

Handwritten musical score for the first system. It consists of three staves: a vocal line in G major with a treble clef, a piano accompaniment in G major with a grand staff (treble and bass clefs), and a bass line in G major with a bass clef. The tempo is marked 'al. viv.' and the performance instruction is 'tr.'. The lyrics are 'o mes jo-ci Se e des caux.' The piano part includes dynamic markings like 'p' and 'f'.

Le cœur qui bat.
Mon cœur pris en sa dé-roule! *(Faut-il que j'aime en sa le, pour comen-cer de-roule?)*

Tres doux et bas *l'harmonie*

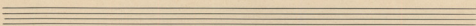
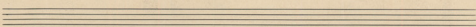
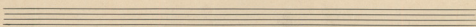
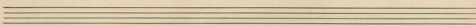
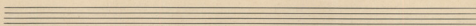
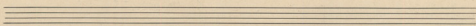
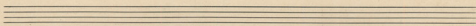
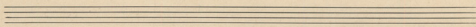
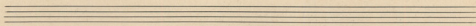
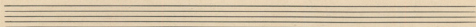
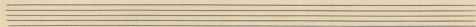
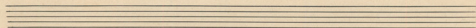
Handwritten musical score for the second system. It consists of three staves: a vocal line in G major with a treble clef, a piano accompaniment in G major with a grand staff, and a bass line in G major with a bass clef. The tempo is 'al. viv.'. The lyrics are 'Le cœur qui bat. Mon cœur pris en sa dé-roule! (Faut-il que j'aime en sa le, pour comen-cher de-roule?)'. The piano part includes dynamic markings like 'p' and 'f'.

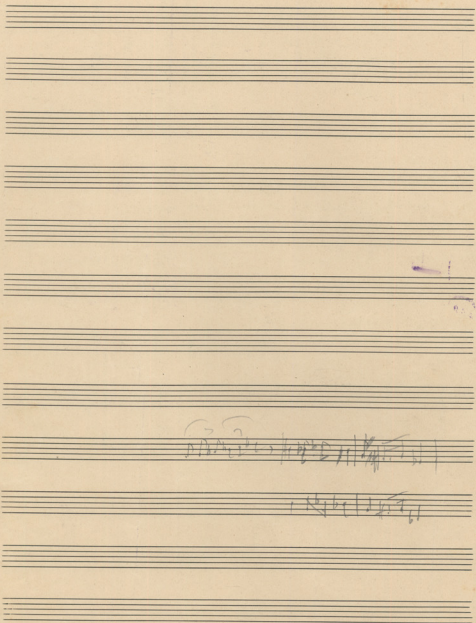
Al. viv. *car de l'air* *En se-ron*

o *mes jo-* *ci* *Se* *e* *des* *caux.*

Handwritten musical score for the third system. It consists of three staves: a vocal line in G major with a treble clef, a piano accompaniment in G major with a grand staff, and a bass line in G major with a bass clef. The tempo is 'al. viv.'. The lyrics are 'o mes jo-ci Se e des caux.' The piano part includes dynamic markings like 'p' and 'f'.

Four empty musical staves, likely for additional parts or as a placeholder.





Handwritten musical notation on the eighth staff from the top. It includes a treble clef, a key signature of one flat (B-flat), and a series of notes and rests. Above the first few notes, there are handwritten numbers: "3 2 1". The notation is somewhat faint and appears to be a short melodic phrase.

Handwritten musical notation on the ninth staff from the top. It includes a treble clef, a key signature of one flat (B-flat), and a series of notes and rests. The notation is very faint and appears to be a short melodic phrase.