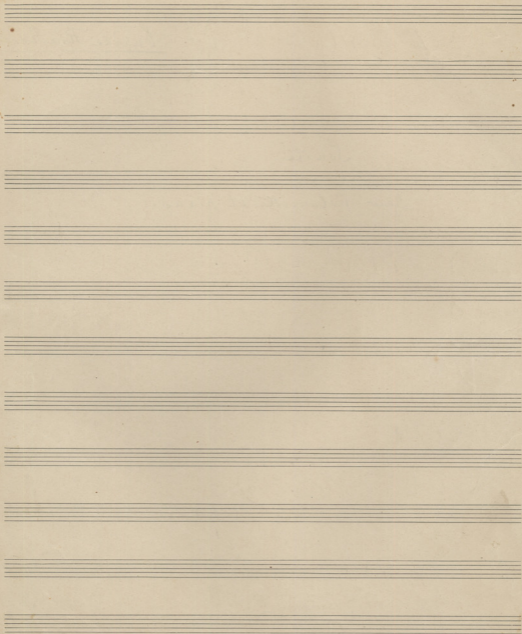


Luile Riado.

Sonate

pour violoncelle et piano.



2)

This image shows a page of handwritten musical notation, likely a score for a piece of music. The notation is written on several staves, with some sections heavily crossed out with large, dark scribbles. The notation includes various musical symbols such as notes, rests, and accidentals. There are also some handwritten annotations and markings, including the number '6' in the upper right corner. The overall appearance is that of a working draft or a composer's sketch.

4)

a.

b.

Handwritten musical score system 1, consisting of three staves. The top staff contains a melodic line with various notes and rests. The middle and bottom staves contain complex chordal accompaniment with many notes and accidentals. There are some scribbles and corrections in the bottom staff.

Handwritten musical score system 2, consisting of three staves. The top staff continues the melodic line. The middle and bottom staves continue the complex chordal accompaniment. There are some scribbles and corrections in the bottom staff.

Handwritten musical score system 3, consisting of three staves. The top staff continues the melodic line. The middle and bottom staves continue the complex chordal accompaniment. There are some scribbles and corrections in the bottom staff.

Handwritten musical score system 4, consisting of three staves. The top staff continues the melodic line. The middle and bottom staves continue the complex chordal accompaniment. There are some scribbles and corrections in the bottom staff.

A handwritten musical score consisting of ten staves. The notation includes treble and bass clefs, various time signatures (such as 3/4, 2/2, and 3/2), and complex rhythmic patterns. The score is heavily annotated with corrections, including large scribbles, arrows, and additional notes. Dynamic markings such as *mf*, *mp*, *f*, and *p* are present throughout. The manuscript shows signs of being a working draft, with many areas of the score being crossed out or heavily revised.

Handwritten musical notation on two staves. The top staff contains a melodic line with various note values and rests. The bottom staff contains a bass line with chords and rhythmic markings. There are some scribbles and corrections in the middle of the piece.

Handwritten musical notation on two staves. The top staff has a melodic line with a large slur over a section. The bottom staff has a bass line with chords. There are some scribbles and corrections in the middle of the piece.

Handwritten musical notation on two staves. The top staff has a melodic line with a large slur over a section. The bottom staff has a bass line with chords. There are some scribbles and corrections in the middle of the piece.

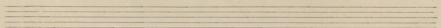
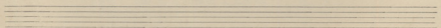
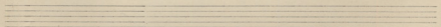
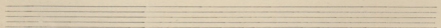
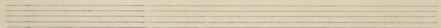
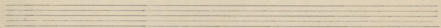
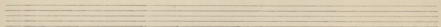
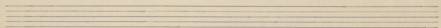
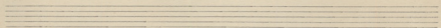
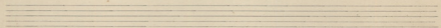
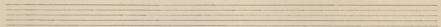
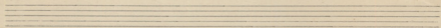
Handwritten musical notation on two staves. The top staff has a melodic line with a large slur over a section. The bottom staff has a bass line with chords. There are some scribbles and corrections in the middle of the piece.

Handwritten musical score on aged paper, featuring multiple staves of music. The notation includes various notes, rests, and dynamic markings such as *pp*, *mf*, and *ff*. The score is divided into several systems, with some sections marked by a large 'X' at the beginning. The paper shows signs of wear, including a tear at the top left corner.

The score consists of approximately 12 staves of music, organized into several systems. The notation includes various notes, rests, and dynamic markings such as *pp*, *mf*, and *ff*. The score is divided into several systems, with some sections marked by a large 'X' at the beginning. The paper shows signs of wear, including a tear at the top left corner.

Key features of the notation include:

- Multiple staves of music, likely representing different instruments or voices.
- Complex rhythmic patterns and rests.
- Dynamic markings: *pp* (pianissimo), *mf* (mezzo-forte), and *ff* (fortissimo).
- Articulation marks and slurs.
- Section markers, including a large 'X' at the start of a section.



Violini & m.

Alc.

Dim.

And

Violini & m.

Alc.

Viol.

f

Violini

ral

Handwritten musical score system 1. It consists of three staves. The top staff has a treble clef and a common time signature. The middle staff has a treble clef and a key signature of one sharp (F#). The bottom staff has a bass clef and a key signature of one sharp (F#). A large section of the middle and bottom staves is heavily crossed out with diagonal lines. The notation includes various notes, rests, and dynamic markings such as 'p'.

Handwritten musical score system 2. It consists of three staves. The top staff has a treble clef and a common time signature. The middle staff has a treble clef and a key signature of one sharp (F#). The bottom staff has a bass clef and a key signature of one sharp (F#). The notation includes various notes, rests, and dynamic markings such as 'p'.

Handwritten musical score system 3. It consists of three staves. The top staff has a treble clef and a common time signature. The middle staff has a treble clef and a key signature of one sharp (F#). The bottom staff has a bass clef and a key signature of one sharp (F#). The notation includes various notes, rests, and dynamic markings such as 'p'.

Handwritten musical score system 4. It consists of three staves. The top staff has a treble clef and a common time signature. The middle staff has a treble clef and a key signature of one sharp (F#). The bottom staff has a bass clef and a key signature of one sharp (F#). The notation includes various notes, rests, and dynamic markings such as 'p'.

Handwritten musical notation on a single staff, featuring a treble clef, a key signature of one sharp (F#), and a 4/4 time signature. The notation includes various rhythmic values and accidentals.

Handwritten musical notation on a single staff, featuring a treble clef and a 4/4 time signature. The notation includes various rhythmic values and accidentals.

Handwritten musical notation on a single staff, featuring a bass clef and a 4/4 time signature. The notation includes various rhythmic values and accidentals.

Handwritten musical notation on a single staff, featuring a treble clef, a key signature of one sharp (F#), and a 4/4 time signature. The notation includes various rhythmic values and accidentals.

Handwritten musical notation on a single staff, featuring a treble clef and a 4/4 time signature. The notation includes various rhythmic values and accidentals.

Handwritten musical notation on a single staff, featuring a bass clef and a 4/4 time signature. The notation includes various rhythmic values and accidentals.

Handwritten musical notation on a single staff, featuring a treble clef, a key signature of one sharp (F#), and a 4/4 time signature. The notation includes various rhythmic values and accidentals.

Handwritten musical notation on a single staff, featuring a treble clef and a 4/4 time signature. The notation includes various rhythmic values and accidentals.

Handwritten musical notation on a single staff, featuring a bass clef and a 4/4 time signature. The notation includes various rhythmic values and accidentals.

Handwritten musical notation on a single staff, featuring a treble clef and a 4/4 time signature. The notation includes various rhythmic values and accidentals.

Handwritten musical notation on a single staff, featuring a treble clef and a 4/4 time signature. The notation includes various rhythmic values and accidentals.

Handwritten musical notation on a single staff, featuring a bass clef and a 4/4 time signature. The notation includes various rhythmic values and accidentals.

8/1

2a. 2a. 2a. 2a. 2a.

Handwritten musical score for the first system, featuring a vocal line and two piano accompaniment staves. The notation includes complex rhythmic patterns and various accidentals. Annotations include "sm" above the vocal line and "forte labmaj" near the piano accompaniment.

Handwritten musical score for the second system, including a vocal line and two piano accompaniment staves. The word "Andante" is written above the vocal line. The piano accompaniment features chords with dynamic markings such as "p." and "f."

Handwritten musical score for the third system, including a vocal line and two piano accompaniment staves. The word "Andante" is written above the vocal line. The piano accompaniment features chords with dynamic markings such as "p." and "f." and includes the word "rit." (ritardando).

Handwritten musical score for the fourth system, including a vocal line and two piano accompaniment staves. The word "Andante" is written above the vocal line. The piano accompaniment features chords with dynamic markings such as "p." and "f." and includes the word "rit." (ritardando).

etc

Andante etc

Handwritten musical score for the first system. It consists of two staves: a piano part on the left and a violin part on the right. The piano part is in 4/4 time and features a complex, rhythmic accompaniment with many beamed notes. The violin part is in 4/4 time and has a melodic line with various ornaments and slurs. The key signature has one flat (B-flat).

Handwritten musical score for the second system. It consists of two staves: a piano part on the left and a violin part on the right. The piano part continues with its complex accompaniment. The violin part has a melodic line with slurs and ornaments. The key signature has one flat (B-flat). There are handwritten annotations: "ans" above the piano staff and "Mie." above the violin staff.

Handwritten musical score for the third system. It consists of two staves: a piano part on the left and a violin part on the right. The piano part continues with its complex accompaniment. The violin part has a melodic line with slurs and ornaments. The key signature has one flat (B-flat). There are handwritten annotations: "ans" above the piano staff and "mp." below the piano staff.

Handwritten musical score for the fourth system. It consists of two staves: a piano part on the left and a violin part on the right. The piano part continues with its complex accompaniment. The violin part has a melodic line with slurs and ornaments. The key signature has one flat (B-flat). There are handwritten annotations: "ans" above the piano staff and "mp." below the piano staff.

Handwritten musical score, first system. It consists of three staves. The top staff has a treble clef and a key signature of one sharp (F#). The middle and bottom staves have bass clefs. The music includes various notes, rests, and dynamic markings such as *mf* and *ff*. There are some scribbles and corrections in the first staff.

Handwritten musical score, second system. It consists of three staves. The top staff has a treble clef and a key signature of one sharp. The middle and bottom staves have bass clefs. The music is heavily marked with dynamic changes like *mf*, *f*, *ff*, and *pp*. There are large, sweeping lines drawn across the staves, possibly indicating phrasing or editing. The word *And* is written above the top staff.

Handwritten musical score, third system. It consists of three staves. The top staff has a treble clef and a key signature of one sharp. The middle and bottom staves have bass clefs. The music is marked with *mf*, *f*, and *pp*. There are large, sweeping lines drawn across the staves. The word *And* is written above the top staff. The word *Allegretto* is written above the top staff, and *And* is written below the bottom staff.

Handwritten musical score, fourth system. It consists of three staves. The top staff has a treble clef and a key signature of one sharp. The middle and bottom staves have bass clefs. The music is marked with *mf*, *f*, and *pp*. There are large, sweeping lines drawn across the staves. The word *And* is written above the top staff.

Handwritten musical score on aged paper, consisting of multiple systems of staves. The notation includes treble and bass clefs, various time signatures (e.g., 2/2, 3/2, 9/8), and dynamic markings such as *p.*, *mf*, *un.*, and *mp.*. The score features complex rhythmic patterns, including triplets and sixteenth notes, and contains several instances of heavy blacked-out sections, likely indicating deletions or corrections. A large bracket at the top right spans across the first two systems. The notation is dense and appears to be a working draft or a composer's sketch.

Handwritten musical notation for the first system, featuring a treble clef, a key signature of one sharp (F#), and a 9/8 time signature. The notation includes a melodic line with a fermata and a bass line with chords and a dynamic marking of *mf*.

Handwritten musical notation for the second system, showing a treble clef, a key signature of one sharp, and a 5/4 time signature. It includes a melodic line with a fermata and a bass line with complex chordal structures and a dynamic marking of *f*.

Handwritten musical notation for the third system, featuring a treble clef, a key signature of one sharp, and a 5/4 time signature. The notation includes a melodic line with a fermata and a bass line with chords and a dynamic marking of *mp*.

Handwritten musical notation for the fourth system, showing a treble clef, a key signature of one sharp, and a 5/4 time signature. It includes a melodic line with a fermata and a bass line with chords and a dynamic marking of *f*. The system concludes with the word *Fine* written above the staff.

Handwritten musical notation for the first system, consisting of three staves. The top staff is in bass clef with a common time signature (C) and contains a melodic line with several notes and rests. The middle staff is in treble clef with a common time signature (C) and contains a melodic line with notes and rests. The bottom staff is in bass clef with a common time signature (C) and contains a bass line with notes and rests. There are some markings like '4/4' and 'p.' in the first measure.

Handwritten musical notation for the second system, consisting of three staves. The top staff is in bass clef with a 5/4 time signature and contains a melodic line with notes and rests. The middle staff is in treble clef with a 5/4 time signature and contains a melodic line with notes and rests. The bottom staff is in bass clef with a 5/4 time signature and contains a bass line with notes and rests.

Handwritten musical notation for the third system, consisting of three staves. The top staff is in bass clef with a 9/4 time signature and contains a melodic line with notes and rests. The middle staff is in treble clef with a 9/4 time signature and contains a melodic line with notes and rests. The bottom staff is in bass clef with a 9/4 time signature and contains a bass line with notes and rests.

Handwritten musical notation for the fourth system, consisting of three staves. The top staff is in bass clef with a 5/4 time signature and contains a melodic line with notes and rests. The middle staff is in treble clef with a 5/4 time signature and contains a melodic line with notes and rests. The bottom staff is in bass clef with a 5/4 time signature and contains a bass line with notes and rests.

Handwritten musical score for the first system, consisting of three staves. The top staff is in treble clef with a 4/4 time signature. The middle staff is in treble clef with a 4/4 time signature. The bottom staff is in bass clef with a 4/4 time signature. The notation includes various notes, rests, and accidentals. A large section of the right side of the page is heavily crossed out with a dense grid of diagonal lines.

Handwritten musical score for the second system, consisting of three staves. The top staff is in treble clef with a 4/4 time signature. The middle staff is in treble clef with a 4/4 time signature. The bottom staff is in bass clef with a 4/4 time signature. The notation includes various notes, rests, and accidentals. There are some markings like 'p' and 'f'.

Handwritten musical score for the third system, consisting of three staves. The top staff is in treble clef with a 4/4 time signature. The middle staff is in treble clef with a 4/4 time signature. The bottom staff is in bass clef with a 4/4 time signature. The notation includes various notes, rests, and accidentals. There are some markings like 'p' and 'f'.

Handwritten musical score for the fourth system, consisting of three staves. The top staff is in treble clef with a 4/4 time signature. The middle staff is in treble clef with a 4/4 time signature. The bottom staff is in bass clef with a 4/4 time signature. The notation includes various notes, rests, and accidentals. There are some markings like 'p' and 'f'.

lento



Mu calmo.

tr. in 3

Handwritten musical notation for the first system, consisting of three staves. The notation includes various notes, rests, and dynamic markings. A large diagonal line is drawn across the entire page, crossing through this system.

Handwritten musical notation for the second system, consisting of three staves. It features complex rhythmic patterns and dynamic markings such as *mp*. A large diagonal line is drawn across the entire page, crossing through this system.

Handwritten musical notation for the third system, consisting of three staves. It includes various notes and rests. A large diagonal line is drawn across the entire page, crossing through this system.

Octave

Handwritten musical notation for the fourth system, consisting of three staves. It includes various notes and rests. A large diagonal line is drawn across the entire page, crossing through this system.

in qui si
cantando

Handwritten musical notation for the fifth system, consisting of three staves. It includes various notes and rests. A large diagonal line is drawn across the entire page, crossing through this system.

Handwritten musical notation for the sixth system, consisting of three staves. It includes various notes and rests. A large diagonal line is drawn across the entire page, crossing through this system.

Handwritten musical notation for the seventh system, consisting of three staves. It includes various notes and rests. A large diagonal line is drawn across the entire page, crossing through this system.

mp

Handwritten musical notation for the eighth system, consisting of three staves. It includes various notes and rests. A large diagonal line is drawn across the entire page, crossing through this system.

Handwritten musical notation for the ninth system, consisting of three staves. It includes various notes and rests. A large diagonal line is drawn across the entire page, crossing through this system.

Handwritten musical notation for the tenth system, consisting of three staves. It includes various notes and rests. A large diagonal line is drawn across the entire page, crossing through this system.

Handwritten musical notation for the eleventh system, consisting of three staves. It includes various notes and rests. A large diagonal line is drawn across the entire page, crossing through this system.

Handwritten musical score for the first system, consisting of three staves. The top staff is in bass clef with a 3/2 time signature. The middle and bottom staves are in treble clef. The notation includes various rhythmic values, accidentals, and dynamic markings such as *sfz* (sforzando) and *mf* (mezzo-forte). There are also some handwritten annotations and a large 'C' time signature in the middle staff.

Handwritten musical score for the second system, consisting of three staves. The notation continues from the first system, featuring complex rhythmic patterns and dynamic markings like *sfz*. The staves are filled with dense musical notation, including many accidentals and slurs.

Empty musical staves for the third system. The top staff has a few faint notes and a *p.* (piano) marking. The middle and bottom staves are mostly blank.

Empty musical staves for the fourth system. The top staff has a few faint notes. The middle and bottom staves are mostly blank.

Sonate pour violoncelle et piano

Emile Biadis.

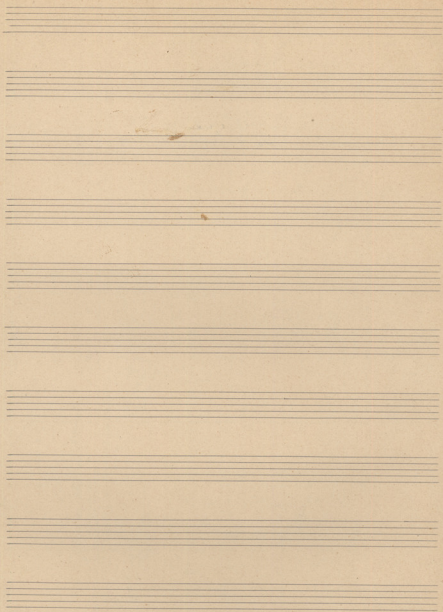
Au specter Adagio à Claveco.

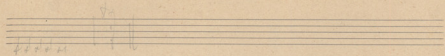
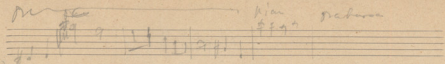
Sonate biblique

pour piano violoncelle et violoncelle.

Andante

Allegro appassionato.





34

Handwritten musical notation for the first system. It consists of three staves. The top staff has a treble clef and a common time signature (C). The middle and bottom staves have bass clefs. The notation includes various rhythmic patterns, notes, and rests, with some markings that appear to be '10' and '10'.

Handwritten musical notation for the second system. It consists of three staves. The top staff has a treble clef and a common time signature (C). The middle and bottom staves have bass clefs. The word "Andorist" is written above the top staff. The notation includes various rhythmic patterns, notes, and rests, with some markings that appear to be "2" and "ff".

Handwritten musical notation for the third system. It consists of three staves. The top staff has a treble clef and a common time signature (C). The middle and bottom staves have bass clefs. The word "Andorist" is written above the top staff. The notation includes various rhythmic patterns, notes, and rests, with some markings that appear to be "50", "cho", "8", "12356789", and "10".

