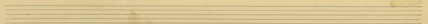
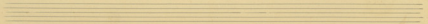
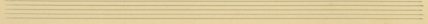
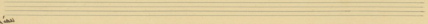
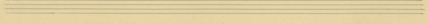
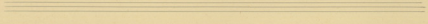
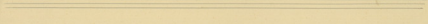
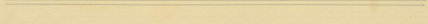
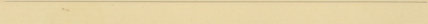
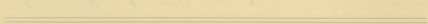
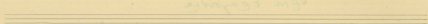
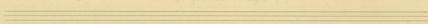
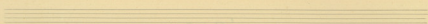
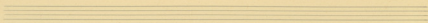
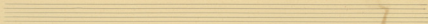


Α' μ. Πιάτο,

[2/4] Τρία τραγούδια

Χαρωμένα με δύο γυναικί μαυρές

με πολλά βήματα βίβη, βυζαντινά, γαρίμ
Νιάω και νλεγιώ.



Faint handwritten text, possibly a title or name.

Faint handwritten text, possibly a title or name.

Faint handwritten text, possibly a title or name.

Faint handwritten text, possibly a title or name.

Small handwritten mark or signature.

Lentement

1. *me.* *me.*

me. *me.*

me. *me.*

me. *me.*

me. *me.*

me. *me.*

me. *me.*

me. *me.*

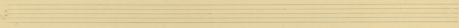
me. *me.*

me. *me.*

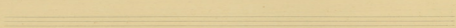
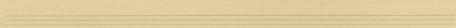
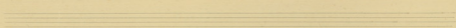
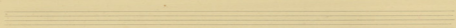
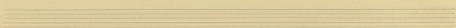
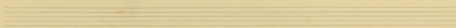
me. *me.*

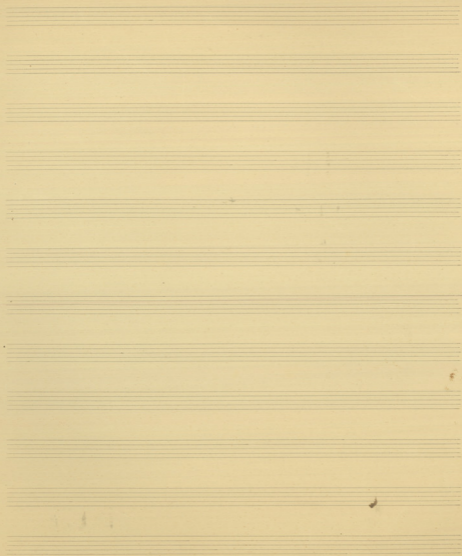
me. *me.*

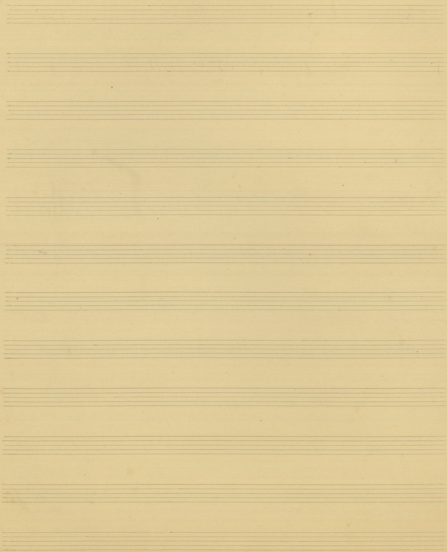
Handwritten musical notation on a single staff system. The notation includes a treble clef, a key signature of one flat (B-flat), and a common time signature (C). The music is written in a style that appears to be a vocal line with lyrics underneath. The lyrics are: "a - - - - -" on the first line, "W. K. - - - - -" on the second line, "10 - - - - -" on the third line, "1100 110" on the fourth line, and "na - - - - -" on the fifth line. There are also some musical symbols like a fermata and a double bar line.



Handwritten musical notation on a single staff system. The notation includes a treble clef, a key signature of one flat (B-flat), and a common time signature (C). The music is written in a style that appears to be a vocal line with lyrics underneath. The lyrics are: "a - - - - -" on the first line, "W. K. - - - - -" on the second line, "10 - - - - -" on the third line, "1100 110" on the fourth line, and "na - - - - -" on the fifth line. There are also some musical symbols like a fermata and a double bar line.







Handwritten musical score for the first movement of the 35th Symphony by Wolfgang Amadeus Mozart. The score is written in G major and 3/4 time, marked *Allegro*. It features staves for Clarinet (Clarin.), Bassoon (Fagotti), Horns (Corni), Trumpets (Tromben), and Timpani (Trommeln). The score includes various musical notations such as notes, rests, and dynamic markings like *noisy*, *piu forte*, *piu piano*, *Obra*, *Coro*, and *Coro 2*. There are several large circles drawn around specific passages in the woodwind parts, and a large diagonal line is drawn across the lower portion of the page, crossing over the bottom of the woodwind staves.

Gravioso.

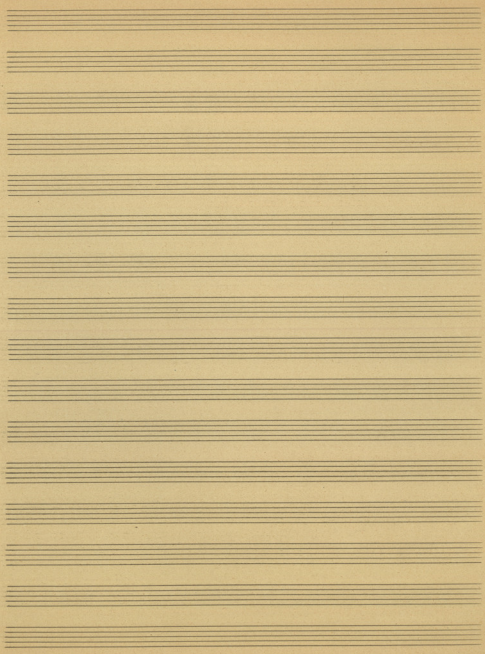
no. 9

Handwritten musical score for the first system. It consists of five staves. The top staff is a vocal line with lyrics: "Ri - sap va' an' inno - ce." The piano accompaniment is written in treble and bass clefs. The music is in a key with one flat and a 3/4 time signature. The tempo is marked "Gravioso".

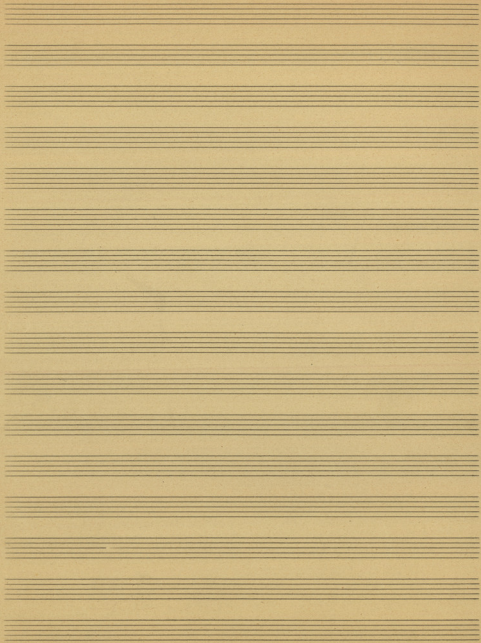
Handwritten musical score for the second system. It consists of five staves. The top staff is a vocal line. The piano accompaniment is written in treble and bass clefs. The music is in a key with one flat and a 3/4 time signature. The tempo is marked "Gravioso". A section of the score is marked "Duo".

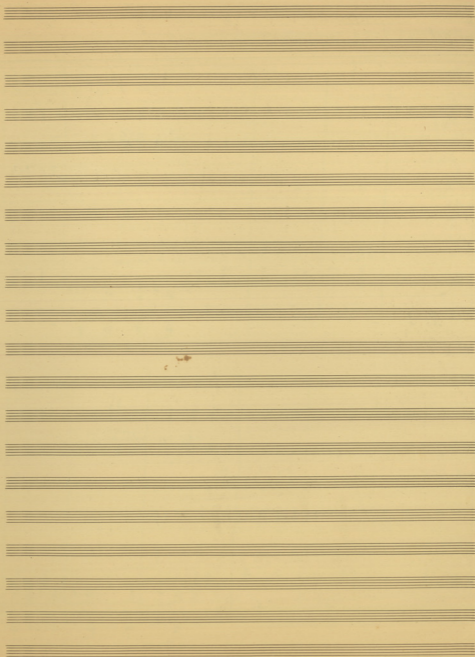
Handwritten musical score for the first system, consisting of five staves. The top staff is a treble clef with a key signature of one sharp (F#). The second and third staves are bass clefs. The fourth and fifth staves are piano accompaniment with treble and bass clefs respectively. The music is written in a cursive, handwritten style with various notes, rests, and slurs.

Handwritten musical score for the second system, consisting of five staves. The notation is similar to the first system, with a treble clef on the top staff and piano accompaniment on the bottom two staves. The handwriting is consistent with the first system.



96
100
111

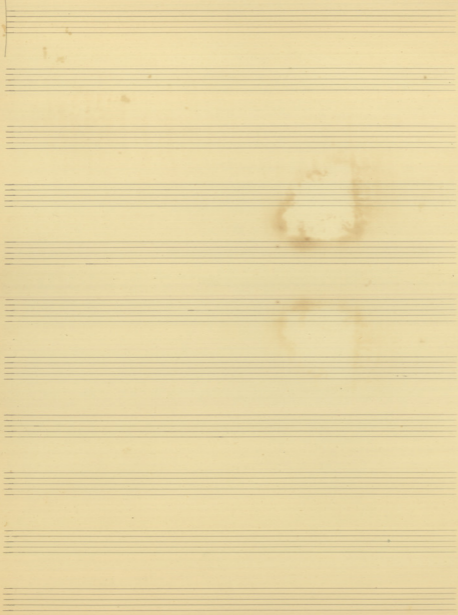




Cla *aus*
 vl *for*
 w *aus*
 Cell
 Cant
 Harp

Cant
*Come now
 meus amicos*
Alce *rall*
Talve col i us...
La Capa

Handwritten musical notation on a single staff, including a treble clef, a key signature of one sharp (F#), and a 2/4 time signature. The notation consists of several measures with notes and rests, some of which are partially obscured by a large stain.





Handwritten musical score on aged paper. The score consists of five staves. The top four staves are mostly blank, with some faint markings at the beginning. The fifth staff contains a melodic line with lyrics written below it. The lyrics are: "si - br' - ju pa - le - no - a - ca' ri mu' - vr". Above the notes are some handwritten annotations, including "h9", "9", and "9". The paper shows signs of age, including yellowing and a small stain at the bottom.

A series of ten empty musical staves on aged paper, arranged vertically. The paper is yellowed and shows signs of wear.

