

Voluptueux et Lust. = 72

Handwritten musical score for the first system, measures 1-4. It features a treble clef with a 5/4 time signature, a bass clef with a 5/4 time signature, and a piano part with a 5/4 time signature. The piano part includes a 'rit.' marking and various chordal textures.

Handwritten musical score for the second system, measures 5-8. It features a treble clef with a common time signature, a bass clef with a common time signature, and a piano part with a common time signature. The piano part includes a 'rit.' marking and various chordal textures.

Handwritten musical score for the third system, measures 9-12. It features a treble clef with a 3/4 time signature, a bass clef with a 3/4 time signature, and a piano part with a 3/4 time signature. The piano part includes a 'rit.' marking and various chordal textures.

Handwritten musical score for the fourth system, measures 13-16. It features a treble clef with a 3/4 time signature, a bass clef with a 3/4 time signature, and a piano part with a 3/4 time signature. The piano part includes a 'rit.' marking and various chordal textures.

non fin animato

rall

a tempo

de clashes

Handwritten musical notation on a single staff, showing a sequence of notes and rests.

Handwritten musical notation on two staves. The upper staff contains a melodic line with slurs and accents. The lower staff contains a bass line with chords and some slurs. The word "Muy" is written on the left, and "auf" and "lun" are written above the lower staff.

Handwritten musical notation on two staves. The upper staff continues the melodic line. The lower staff features a complex bass line with many slurs and accents, suggesting a dense texture.

Handwritten musical notation on two staves. The upper staff has a few notes. The lower staff is very dense with many slurs and accents, indicating a highly active bass line. The number "3" and the phrase "molto rit" are written above the staff.

Handwritten musical notation on two staves. The upper staff shows a melodic line with a fermata over the final note. The lower staff has a bass line with slurs and accents. The phrase "p dolcissimo. calare" is written on the left.

Handwritten musical score on page 13, featuring multiple staves with complex notation, including chords, melodic lines, and dynamic markings.

Key markings and annotations include:

- molto rit.* (written above the first staff)
- ad tempo* (written below the first staff)
- ff* (written above the second staff)
- quasi d. = 56 d. = 92.* (written above the eighth staff)
- molto rit.* (written above the ninth staff)
- rit.* (written below the ninth staff)

The score consists of approximately 10 staves of music, with various time signatures and key signatures indicated throughout. The notation includes complex chordal structures, melodic lines, and dynamic markings.

Handwritten musical notation on a five-line staff. The notation includes various rhythmic values and accidentals. Below the staff, there are several vertical lines of text, possibly representing a transcription or a specific notation system, with some characters that appear to be Chinese or Japanese.

Handwritten musical notation on a five-line staff, continuing the piece. It features a mix of note values and rests, with some dynamic markings.

Handwritten musical notation on a five-line staff. This section includes a variety of rhythmic patterns and some complex phrasing.

Handwritten musical notation on a five-line staff. The notation is dense with notes and rests, and includes some dynamic markings.

Handwritten musical notation on a five-line staff. This section includes a variety of rhythmic patterns and some complex phrasing.

Handwritten musical notation on a five-line staff. This section includes a variety of rhythmic patterns and some complex phrasing. The notation is dense with notes and rests, and includes some dynamic markings.

The image shows a page of handwritten musical notation on aged, yellowed paper. The score is written in black ink and consists of several systems of staves.

- System 1:** The first staff contains a melodic line with various note values and rests. The second staff shows a complex harmonic accompaniment with many beamed notes and accidentals.
- System 2:** The first staff begins with a *rall.* marking and a tempo indication of $\text{♩} = 88$. The word *Polipticum* is written above the staff. The music continues with intricate rhythmic patterns.
- System 3:** The first staff features a melodic line with some rests. The second staff has a complex accompaniment with many beamed notes and accidentals.
- System 4:** The first staff begins with a *rall. poco* marking and the text *Fin. numero 669*. The music concludes with a final melodic phrase and a complex accompaniment.

The notation includes various note values (quarter, eighth, sixteenth notes), rests, and accidentals (sharps, flats, naturals). There are also some markings that appear to be figured bass or specific performance instructions, such as $\frac{6}{8}$ and $\frac{2}{4}$ time signatures, and $\frac{b}{b}$ or $\frac{b}{\flat}$ symbols.

La mix mixite velle to,
à plain des acous, ayogeo

deut = 69.

D. Pousignol dans la nuit

mf

p

ven

meut

La mix mixite velle to,
à plain des acous, ayogeo

deut = 69.

D. Pousignol dans la nuit

mf

p

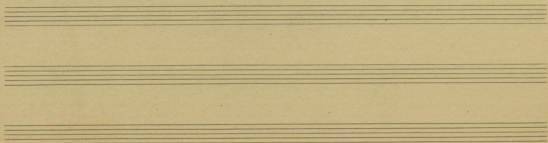
ven

meut

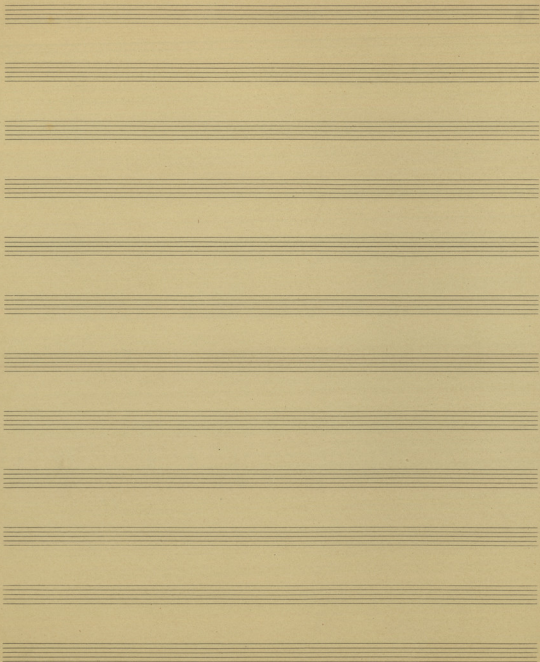
Handwritten musical score for the first system. It consists of three staves: a vocal line in G major, a piano accompaniment in G major, and a bass line in G major. The piano part features a complex rhythmic pattern with many sixteenth notes. The bass line has a few notes, including a prominent G in the second measure.

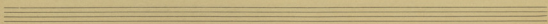
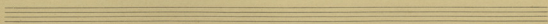
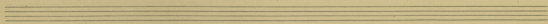
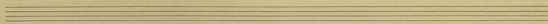
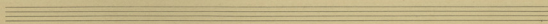
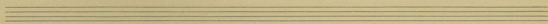
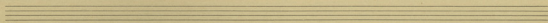
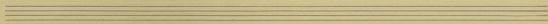
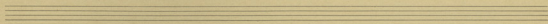
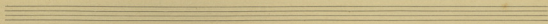
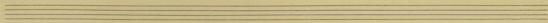
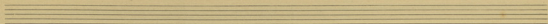
Handwritten musical score for the second system. It includes the vocal line with lyrics: "Ed - na a' - na - la -". The piano accompaniment continues with dense sixteenth-note patterns. The bass line has notes corresponding to the lyrics. Dynamic markings include *mp.* and *ff*.

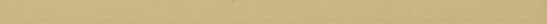
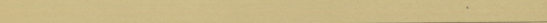
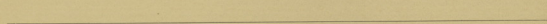
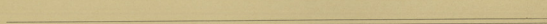
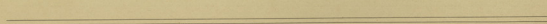
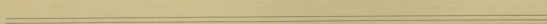
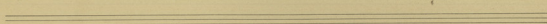
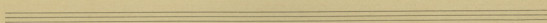
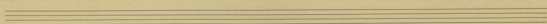
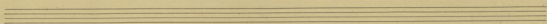
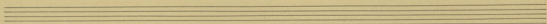
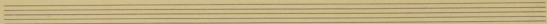
Handwritten musical score for the third system. It includes the vocal line with lyrics: "Pa - tris - ter - ce - num -". The piano accompaniment continues with dense sixteenth-note patterns. The bass line has notes corresponding to the lyrics. Dynamic markings include *rit*, *pp.*, and *pp.*.

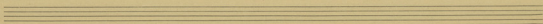
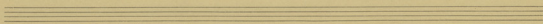
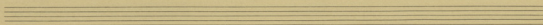
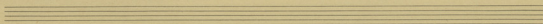
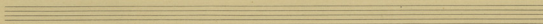
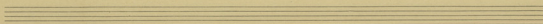
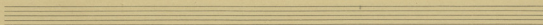
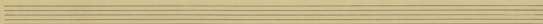
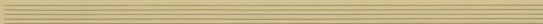
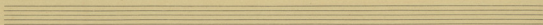
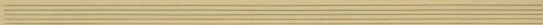
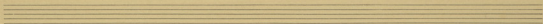


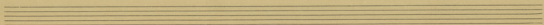
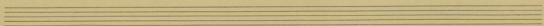
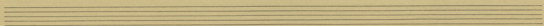
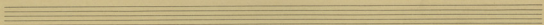
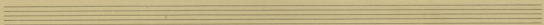
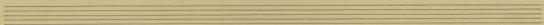
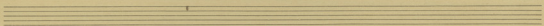
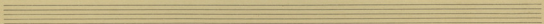
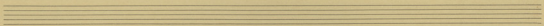
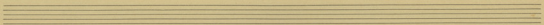
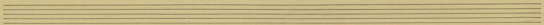
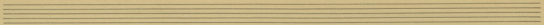
Lute aux fontaines.

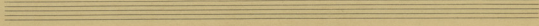
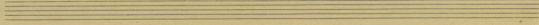
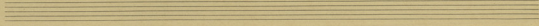
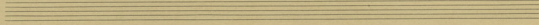
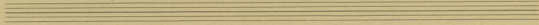
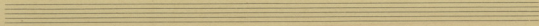
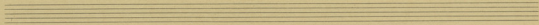
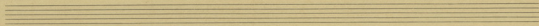
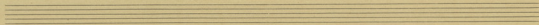
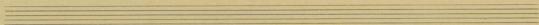
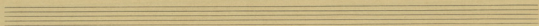
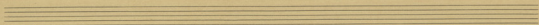


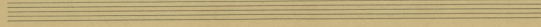
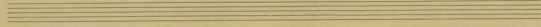
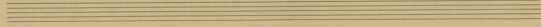
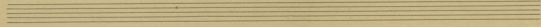
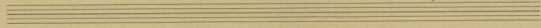
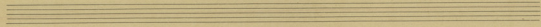
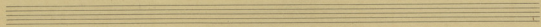
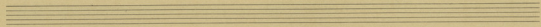
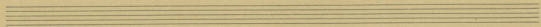
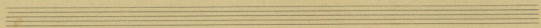
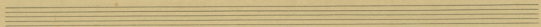
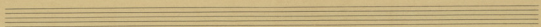












IV. Les champs du retour...

Pis lent! = 44.

Handwritten musical score for "Les champs du retour...". The score is written on four systems of staves, each system containing three staves (likely piano, violin, and cello/bass). The music is in 3/4 time and features complex rhythmic patterns, including triplets and sixteenth notes. The score includes various performance markings such as "dolce", "rall.", "a tempo", and "rit.". The notation is dense and includes many accidentals and dynamic markings.

Key markings and features include:

- Tempo/Performance markings:** "dolce", "rall.", "a tempo", "rit.", "3", "4", "5", "6", "7", "8", "9", "10", "11", "12", "13", "14", "15", "16", "17", "18", "19", "20", "21", "22", "23", "24", "25", "26", "27", "28", "29", "30", "31", "32", "33", "34", "35", "36", "37", "38", "39", "40", "41", "42", "43", "44", "45", "46", "47", "48", "49", "50", "51", "52", "53", "54", "55", "56", "57", "58", "59", "60", "61", "62", "63", "64", "65", "66", "67", "68", "69", "70", "71", "72", "73", "74", "75", "76", "77", "78", "79", "80", "81", "82", "83", "84", "85", "86", "87", "88", "89", "90", "91", "92", "93", "94", "95", "96", "97", "98", "99", "100".
- Accidentals:** Numerous flats (b) and sharps (#) are used throughout the score.
- Rhythmic patterns:** The score features complex rhythmic patterns, including triplets and sixteenth notes.
- Staff layout:** Each system consists of three staves, with the top staff likely being the piano part and the bottom two staves being the violin and cello/bass parts.

