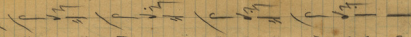
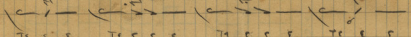


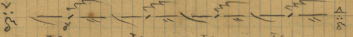
4
X
8



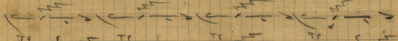
Tc c c Tc c c Tc c c Tc c c



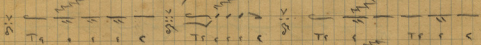
Tc c c Tc c c Tc c c Tc c c



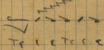
Tc Tc Tc Tc



Tc c c Tc c c Tc c c Tc c c



Tc c c c Tc c c c Tc c c Tc c c



Tc c c c

op::A

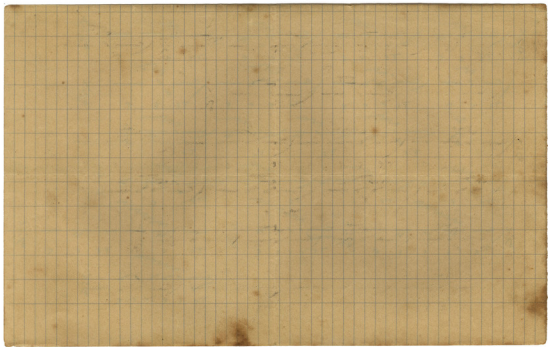
op::A

op::A

op::A

op::A

op::A



Handwritten musical notation on a five-line staff. The notation includes rhythmic values (dots and vertical lines) and melodic lines. A time signature of 4:40 is written at the beginning. The word "Lina" is written above the staff. A large "X" is written to the left of the staff.

Handwritten musical notation on a five-line staff. The notation includes rhythmic values and melodic lines. A time signature of 4:40 is written at the beginning.

Handwritten musical notation on a five-line staff. The notation includes rhythmic values and melodic lines. A time signature of 4:40 is written at the beginning.

Handwritten musical notation on a five-line staff. The notation includes rhythmic values and melodic lines. A time signature of 4:40 is written at the beginning.

Handwritten musical notation on a five-line staff. The notation includes rhythmic values and melodic lines. A time signature of 4:40 is written at the beginning.

Handwritten musical notation on a five-line staff. The notation includes rhythmic values and melodic lines. A time signature of 4:40 is written at the beginning.

