

I A!

Kew Airer I A!

127

112
Ερωτηνόν ΙΑ'

Σύντομον

2

Лавров I.A.

Лавров

Ἑωθινόν ΙΑ. Ἦχος Π' ς Νη
Ὡς ἔως Ἐυλόγων Ἀρχῶν

Ὡς ἔως Ἐυλόγων Ἀρχῶν
Ὡς ἔως Ἐυλόγων Ἀρχῶν

Ὡς ἔως Ἐυλόγων Ἀρχῶν
Ὡς ἔως Ἐυλόγων Ἀρχῶν

Ὡς ἔως Ἐυλόγων Ἀρχῶν
Ὡς ἔως Ἐυλόγων Ἀρχῶν

Ὡς ἔως Ἐυλόγων Ἀρχῶν
Ὡς ἔως Ἐυλόγων Ἀρχῶν

Ὡς ἔως Ἐυλόγων Ἀρχῶν
Ὡς ἔως Ἐυλόγων Ἀρχῶν

Ὡς ἔως Ἐυλόγων Ἀρχῶν
Ὡς ἔως Ἐυλόγων Ἀρχῶν

Ὡς ἔως Ἐυλόγων Ἀρχῶν
Ὡς ἔως Ἐυλόγων Ἀρχῶν

Ὡς ἔως Ἐυλόγων Ἀρχῶν
Ὡς ἔως Ἐυλόγων Ἀρχῶν

Handwritten text on lined paper, appearing as bleed-through from the reverse side. The text is mirrored and mostly illegible due to the bleed-through effect.

γα α α πη ης α α α αν τε ε ε ε ε ε υ η η σιν

την τς ποι μαι αι αι αι αι νει ει ει εν ρον τι ι

ι ι ι ι δα α αι αι αι αι των δι ο ο υαι

ε γε ε γες ει δι ρει ει εις με ε

πτε ε ε ε ε ε τρε ποι μαι νε τα α α α α ρ

νι ι ι ι α α α μς ποι οι οι οι μαι αι νε ε ε τα

προ ο ο ο βα τα α α α α α α α α α α α α α

λα α α α μς ο δε ευ θε ε ω ως εν

THE FIRST PART OF THE HISTORY OF THE
REIGN OF CHARLES THE FIRST

IN THE YEAR 1625

BY JOHN BURNETT

LONDON Printed by J. Sturges, at the
Sign of the Gun, in St. Dunstons Church-yard, 1704

THE SECOND PART OF THE HISTORY OF THE
REIGN OF CHARLES THE FIRST

IN THE YEAR 1625

BY JOHN BURNETT

LONDON Printed by J. Sturges, at the
Sign of the Gun, in St. Dunstons Church-yard, 1704

δεῖ ¹ ² ³ ⁴ ⁵ ⁶ ⁷ ⁸ ⁹ ¹⁰ ¹¹ ¹² ¹³ ¹⁴ ¹⁵ ¹⁶ ¹⁷ ¹⁸ ¹⁹ ²⁰ ²¹ ²² ²³ ²⁴ ²⁵ ²⁶ ²⁷ ²⁸ ²⁹ ³⁰ ³¹ ³² ³³ ³⁴ ³⁵ ³⁶ ³⁷ ³⁸ ³⁹ ⁴⁰ ⁴¹ ⁴² ⁴³ ⁴⁴ ⁴⁵ ⁴⁶ ⁴⁷ ⁴⁸ ⁴⁹ ⁵⁰ ⁵¹ ⁵² ⁵³ ⁵⁴ ⁵⁵ ⁵⁶ ⁵⁷ ⁵⁸ ⁵⁹ ⁶⁰ ⁶¹ ⁶² ⁶³ ⁶⁴ ⁶⁵ ⁶⁶ ⁶⁷ ⁶⁸ ⁶⁹ ⁷⁰ ⁷¹ ⁷² ⁷³ ⁷⁴ ⁷⁵ ⁷⁶ ⁷⁷ ⁷⁸ ⁷⁹ ⁸⁰ ⁸¹ ⁸² ⁸³ ⁸⁴ ⁸⁵ ⁸⁶ ⁸⁷ ⁸⁸ ⁸⁹ ⁹⁰ ⁹¹ ⁹² ⁹³ ⁹⁴ ⁹⁵ ⁹⁶ ⁹⁷ ⁹⁸ ⁹⁹ ¹⁰⁰ ¹⁰¹ ¹⁰² ¹⁰³ ¹⁰⁴ ¹⁰⁵ ¹⁰⁶ ¹⁰⁷ ¹⁰⁸ ¹⁰⁹ ¹¹⁰ ¹¹¹ ¹¹² ¹¹³ ¹¹⁴ ¹¹⁵ ¹¹⁶ ¹¹⁷ ¹¹⁸ ¹¹⁹ ¹²⁰ ¹²¹ ¹²² ¹²³ ¹²⁴ ¹²⁵ ¹²⁶ ¹²⁷ ¹²⁸ ¹²⁹ ¹³⁰ ¹³¹ ¹³² ¹³³ ¹³⁴ ¹³⁵ ¹³⁶ ¹³⁷ ¹³⁸ ¹³⁹ ¹⁴⁰ ¹⁴¹ ¹⁴² ¹⁴³ ¹⁴⁴ ¹⁴⁵ ¹⁴⁶ ¹⁴⁷ ¹⁴⁸ ¹⁴⁹ ¹⁵⁰ ¹⁵¹ ¹⁵² ¹⁵³ ¹⁵⁴ ¹⁵⁵ ¹⁵⁶ ¹⁵⁷ ¹⁵⁸ ¹⁵⁹ ¹⁶⁰ ¹⁶¹ ¹⁶² ¹⁶³ ¹⁶⁴ ¹⁶⁵ ¹⁶⁶ ¹⁶⁷ ¹⁶⁸ ¹⁶⁹ ¹⁷⁰ ¹⁷¹ ¹⁷² ¹⁷³ ¹⁷⁴ ¹⁷⁵ ¹⁷⁶ ¹⁷⁷ ¹⁷⁸ ¹⁷⁹ ¹⁸⁰ ¹⁸¹ ¹⁸² ¹⁸³ ¹⁸⁴ ¹⁸⁵ ¹⁸⁶ ¹⁸⁷ ¹⁸⁸ ¹⁸⁹ ¹⁹⁰ ¹⁹¹ ¹⁹² ¹⁹³ ¹⁹⁴ ¹⁹⁵ ¹⁹⁶ ¹⁹⁷ ¹⁹⁸ ¹⁹⁹ ²⁰⁰ ²⁰¹ ²⁰² ²⁰³ ²⁰⁴ ²⁰⁵ ²⁰⁶ ²⁰⁷ ²⁰⁸ ²⁰⁹ ²¹⁰ ²¹¹ ²¹² ²¹³ ²¹⁴ ²¹⁵ ²¹⁶ ²¹⁷ ²¹⁸ ²¹⁹ ²²⁰ ²²¹ ²²² ²²³ ²²⁴ ²²⁵ ²²⁶ ²²⁷ ²²⁸ ²²⁹ ²³⁰ ²³¹ ²³² ²³³ ²³⁴ ²³⁵ ²³⁶ ²³⁷ ²³⁸ ²³⁹ ²⁴⁰ ²⁴¹ ²⁴² ²⁴³ ²⁴⁴ ²⁴⁵ ²⁴⁶ ²⁴⁷ ²⁴⁸ ²⁴⁹ ²⁵⁰ ²⁵¹ ²⁵² ²⁵³ ²⁵⁴ ²⁵⁵ ²⁵⁶ ²⁵⁷ ²⁵⁸ ²⁵⁹ ²⁶⁰ ²⁶¹ ²⁶² ²⁶³ ²⁶⁴ ²⁶⁵ ²⁶⁶ ²⁶⁷ ²⁶⁸ ²⁶⁹ ²⁷⁰ ²⁷¹ ²⁷² ²⁷³ ²⁷⁴ ²⁷⁵ ²⁷⁶ ²⁷⁷ ²⁷⁸ ²⁷⁹ ²⁸⁰ ²⁸¹ ²⁸² ²⁸³ ²⁸⁴ ²⁸⁵ ²⁸⁶ ²⁸⁷ ²⁸⁸ ²⁸⁹ ²⁹⁰ ²⁹¹ ²⁹² ²⁹³ ²⁹⁴ ²⁹⁵ ²⁹⁶ ²⁹⁷ ²⁹⁸ ²⁹⁹ ³⁰⁰ ³⁰¹ ³⁰² ³⁰³ ³⁰⁴ ³⁰⁵ ³⁰⁶ ³⁰⁷ ³⁰⁸ ³⁰⁹ ³¹⁰ ³¹¹ ³¹² ³¹³ ³¹⁴ ³¹⁵ ³¹⁶ ³¹⁷ ³¹⁸ ³¹⁹ ³²⁰ ³²¹ ³²² ³²³ ³²⁴ ³²⁵ ³²⁶ ³²⁷ ³²⁸ ³²⁹ ³³⁰ ³³¹ ³³² ³³³ ³³⁴ ³³⁵ ³³⁶ ³³⁷ ³³⁸ ³³⁹ ³⁴⁰ ³⁴¹ ³⁴² ³⁴³ ³⁴⁴ ³⁴⁵ ³⁴⁶ ³⁴⁷ ³⁴⁸ ³⁴⁹ ³⁵⁰ ³⁵¹ ³⁵² ³⁵³ ³⁵⁴ ³⁵⁵ ³⁵⁶ ³⁵⁷ ³⁵⁸ ³⁵⁹ ³⁶⁰ ³⁶¹ ³⁶² ³⁶³ ³⁶⁴ ³⁶⁵ ³⁶⁶ ³⁶⁷ ³⁶⁸ ³⁶⁹ ³⁷⁰ ³⁷¹ ³⁷² ³⁷³ ³⁷⁴ ³⁷⁵ ³⁷⁶ ³⁷⁷ ³⁷⁸ ³⁷⁹ ³⁸⁰ ³⁸¹ ³⁸² ³⁸³ ³⁸⁴ ³⁸⁵ ³⁸⁶ ³⁸⁷ ³⁸⁸ ³⁸⁹ ³⁹⁰ ³⁹¹ ³⁹² ³⁹³ ³⁹⁴ ³⁹⁵ ³⁹⁶ ³⁹⁷ ³⁹⁸ ³⁹⁹ ⁴⁰⁰ ⁴⁰¹ ⁴⁰² ⁴⁰³ ⁴⁰⁴ ⁴⁰⁵ ⁴⁰⁶ ⁴⁰⁷ ⁴⁰⁸ ⁴⁰⁹ ⁴¹⁰ ⁴¹¹ ⁴¹² ⁴¹³ ⁴¹⁴ ⁴¹⁵ ⁴¹⁶ ⁴¹⁷ ⁴¹⁸ ⁴¹⁹ ⁴²⁰ ⁴²¹ ⁴²² ⁴²³ ⁴²⁴ ⁴²⁵ ⁴²⁶ ⁴²⁷ ⁴²⁸ ⁴²⁹ ⁴³⁰ ⁴³¹ ⁴³² ⁴³³ ⁴³⁴ ⁴³⁵ ⁴³⁶ ⁴³⁷ ⁴³⁸ ⁴³⁹ ⁴⁴⁰ ⁴⁴¹ ⁴⁴² ⁴⁴³ ⁴⁴⁴ ⁴⁴⁵ ⁴⁴⁶ ⁴⁴⁷ ⁴⁴⁸ ⁴⁴⁹ ⁴⁵⁰ ⁴⁵¹ ⁴⁵² ⁴⁵³ ⁴⁵⁴ ⁴⁵⁵ ⁴⁵⁶ ⁴⁵⁷ ⁴⁵⁸ ⁴⁵⁹ ⁴⁶⁰ ⁴⁶¹ ⁴⁶² ⁴⁶³ ⁴⁶⁴ ⁴⁶⁵ ⁴⁶⁶ ⁴⁶⁷ ⁴⁶⁸ ⁴⁶⁹ ⁴⁷⁰ ⁴⁷¹ ⁴⁷² ⁴⁷³ ⁴⁷⁴ ⁴⁷⁵ ⁴⁷⁶ ⁴⁷⁷ ⁴⁷⁸ ⁴⁷⁹ ⁴⁸⁰ ⁴⁸¹ ⁴⁸² ⁴⁸³ ⁴⁸⁴ ⁴⁸⁵ ⁴⁸⁶ ⁴⁸⁷ ⁴⁸⁸ ⁴⁸⁹ ⁴⁹⁰ ⁴⁹¹ ⁴⁹² ⁴⁹³ ⁴⁹⁴ ⁴⁹⁵ ⁴⁹⁶ ⁴⁹⁷ ⁴⁹⁸ ⁴⁹⁹ ⁵⁰⁰ ⁵⁰¹ ⁵⁰² ⁵⁰³ ⁵⁰⁴ ⁵⁰⁵ ⁵⁰⁶ ⁵⁰⁷ ⁵⁰⁸ ⁵⁰⁹ ⁵¹⁰ ⁵¹¹ ⁵¹² ⁵¹³ ⁵¹⁴ ⁵¹⁵ ⁵¹⁶ ⁵¹⁷ ⁵¹⁸ ⁵¹⁹ ⁵²⁰ ⁵²¹ ⁵²² ⁵²³ ⁵²⁴ ⁵²⁵ ⁵²⁶ ⁵²⁷ ⁵²⁸ ⁵²⁹ ⁵³⁰ ⁵³¹ ⁵³² ⁵³³ ⁵³⁴ ⁵³⁵ ⁵³⁶ ⁵³⁷ ⁵³⁸ ⁵³⁹ ⁵⁴⁰ ⁵⁴¹ ⁵⁴² ⁵⁴³ ⁵⁴⁴ ⁵⁴⁵ ⁵⁴⁶ ⁵⁴⁷ ⁵⁴⁸ ⁵⁴⁹ ⁵⁵⁰ ⁵⁵¹ ⁵⁵² ⁵⁵³ ⁵⁵⁴ ⁵⁵⁵ ⁵⁵⁶ ⁵⁵⁷ ⁵⁵⁸ ⁵⁵⁹ ⁵⁶⁰ ⁵⁶¹ ⁵⁶² ⁵⁶³ ⁵⁶⁴ ⁵⁶⁵ ⁵⁶⁶ ⁵⁶⁷ ⁵⁶⁸ ⁵⁶⁹ ⁵⁷⁰ ⁵⁷¹ ⁵⁷² ⁵⁷³ ⁵⁷⁴ ⁵⁷⁵ ⁵⁷⁶ ⁵⁷⁷ ⁵⁷⁸ ⁵⁷⁹ ⁵⁸⁰ ⁵⁸¹ ⁵⁸² ⁵⁸³ ⁵⁸⁴ ⁵⁸⁵ ⁵⁸⁶ ⁵⁸⁷ ⁵⁸⁸ ⁵⁸⁹ ⁵⁹⁰ ⁵⁹¹ ⁵⁹² ⁵⁹³ ⁵⁹⁴ ⁵⁹⁵ ⁵⁹⁶ ⁵⁹⁷ ⁵⁹⁸ ⁵⁹⁹ ⁶⁰⁰ ⁶⁰¹ ⁶⁰² ⁶⁰³ ⁶⁰⁴ ⁶⁰⁵ ⁶⁰⁶ ⁶⁰⁷ ⁶⁰⁸ ⁶⁰⁹ ⁶¹⁰ ⁶¹¹ ⁶¹² ⁶¹³ ⁶¹⁴ ⁶¹⁵ ⁶¹⁶ ⁶¹⁷ ⁶¹⁸ ⁶¹⁹ ⁶²⁰ ⁶²¹ ⁶²² ⁶²³ ⁶²⁴ ⁶²⁵ ⁶²⁶ ⁶²⁷ ⁶²⁸ ⁶²⁹ ⁶³⁰ ⁶³¹ ⁶³² ⁶³³ ⁶³⁴ ⁶³⁵ ⁶³⁶ ⁶³⁷ ⁶³⁸ ⁶³⁹ ⁶⁴⁰ ⁶⁴¹ ⁶⁴² ⁶⁴³ ⁶⁴⁴ ⁶⁴⁵ ⁶⁴⁶ ⁶⁴⁷ ⁶⁴⁸ ⁶⁴⁹ ⁶⁵⁰ ⁶⁵¹ ⁶⁵² ⁶⁵³ ⁶⁵⁴ ⁶⁵⁵ ⁶⁵⁶ ⁶⁵⁷ ⁶⁵⁸ ⁶⁵⁹ ⁶⁶⁰ ⁶⁶¹ ⁶⁶² ⁶⁶³ ⁶⁶⁴ ⁶⁶⁵ ⁶⁶⁶ ⁶⁶⁷ ⁶⁶⁸ ⁶⁶⁹ ⁶⁷⁰ ⁶⁷¹ ⁶⁷² ⁶⁷³ ⁶⁷⁴ ⁶⁷⁵ ⁶⁷⁶ ⁶⁷⁷ ⁶⁷⁸ ⁶⁷⁹ ⁶⁸⁰ ⁶⁸¹ ⁶⁸² ⁶⁸³ ⁶⁸⁴ ⁶⁸⁵ ⁶⁸⁶ ⁶⁸⁷ ⁶⁸⁸ ⁶⁸⁹ ⁶⁹⁰ ⁶⁹¹ ⁶⁹² ⁶⁹³ ⁶⁹⁴ ⁶⁹⁵ ⁶⁹⁶ ⁶⁹⁷ ⁶⁹⁸ ⁶⁹⁹ ⁷⁰⁰ ⁷⁰¹ ⁷⁰² ⁷⁰³ ⁷⁰⁴ ⁷⁰⁵ ⁷⁰⁶ ⁷⁰⁷ ⁷⁰⁸ ⁷⁰⁹ ⁷¹⁰ ⁷¹¹ ⁷¹² ⁷¹³ ⁷¹⁴ ⁷¹⁵ ⁷¹⁶ ⁷¹⁷ ⁷¹⁸ ⁷¹⁹ ⁷²⁰ ⁷²¹ ⁷²² ⁷²³ ⁷²⁴ ⁷²⁵ ⁷²⁶ ⁷²⁷ ⁷²⁸ ⁷²⁹ ⁷³⁰ ⁷³¹ ⁷³² ⁷³³ ⁷³⁴ ⁷³⁵ ⁷³⁶ ⁷³⁷ ⁷³⁸ ⁷³⁹ ⁷⁴⁰ ⁷⁴¹ ⁷⁴² ⁷⁴³ ⁷⁴⁴ ⁷⁴⁵ ⁷⁴⁶ ⁷⁴⁷ ⁷⁴⁸ ⁷⁴⁹ ⁷⁵⁰ ⁷⁵¹ ⁷⁵² ⁷⁵³ ⁷⁵⁴ ⁷⁵⁵ ⁷⁵⁶ ⁷⁵⁷ ⁷⁵⁸ ⁷⁵⁹ ⁷⁶⁰ ⁷⁶¹ ⁷⁶² ⁷⁶³ ⁷⁶⁴ ⁷⁶⁵ ⁷⁶⁶ ⁷⁶⁷ ⁷⁶⁸ ⁷⁶⁹ ⁷⁷⁰ ⁷⁷¹ ⁷⁷² ⁷⁷³ ⁷⁷⁴ ⁷⁷⁵ ⁷⁷⁶ ⁷⁷⁷ ⁷⁷⁸ ⁷⁷⁹ ⁷⁸⁰ ⁷⁸¹ ⁷⁸² ⁷⁸³ ⁷⁸⁴ ⁷⁸⁵ ⁷⁸⁶ ⁷⁸⁷ ⁷⁸⁸ ⁷⁸⁹ ⁷⁹⁰ ⁷⁹¹ ⁷⁹² ⁷⁹³ ⁷⁹⁴ ⁷⁹⁵ ⁷⁹⁶ ⁷⁹⁷ ⁷⁹⁸ ⁷⁹⁹ ⁸⁰⁰ ⁸⁰¹ ⁸⁰² ⁸⁰³ ⁸⁰⁴ ⁸⁰⁵ ⁸⁰⁶ ⁸⁰⁷ ⁸⁰⁸ ⁸⁰⁹ ⁸¹⁰ ⁸¹¹ ⁸¹² ⁸¹³ ⁸¹⁴ ⁸¹⁵ ⁸¹⁶ ⁸¹⁷ ⁸¹⁸ ⁸¹⁹ ⁸²⁰ ⁸²¹ ⁸²² ⁸²³ ⁸²⁴ ⁸²⁵ ⁸²⁶ ⁸²⁷ ⁸²⁸ ⁸²⁹ ⁸³⁰ ⁸³¹ ⁸³² ⁸³³ ⁸³⁴ ⁸³⁵ ⁸³⁶ ⁸³⁷ ⁸³⁸ ⁸³⁹ ⁸⁴⁰ ⁸⁴¹ ⁸⁴² ⁸⁴³ ⁸⁴⁴ ⁸⁴⁵ ⁸⁴⁶ ⁸⁴⁷ ⁸⁴⁸ ⁸⁴⁹ ⁸⁵⁰ ⁸⁵¹ ⁸⁵² ⁸⁵³ ⁸⁵⁴ ⁸⁵⁵ ⁸⁵⁶ ⁸⁵⁷ ⁸⁵⁸ ⁸⁵⁹ ⁸⁶⁰ ⁸⁶¹ ⁸⁶² ⁸⁶³ ⁸⁶⁴ ⁸⁶⁵ ⁸⁶⁶ ⁸⁶⁷ ⁸⁶⁸ ⁸⁶⁹ ⁸⁷⁰ ⁸⁷¹ ⁸⁷² ⁸⁷³ ⁸⁷⁴ ⁸⁷⁵ ⁸⁷⁶ ⁸⁷⁷ ⁸⁷⁸ ⁸⁷⁹ ⁸⁸⁰ ⁸⁸¹ ⁸⁸² ⁸⁸³ ⁸⁸⁴ ⁸⁸⁵ ⁸⁸⁶ ⁸⁸⁷ ⁸⁸⁸ ⁸⁸⁹ ⁸⁹⁰ ⁸⁹¹ ⁸⁹² ⁸⁹³ ⁸⁹⁴ ⁸⁹⁵ ⁸⁹⁶ ⁸⁹⁷ ⁸⁹⁸ ⁸⁹⁹ ⁹⁰⁰ ⁹⁰¹ ⁹⁰² ⁹⁰³ ⁹⁰⁴ ⁹⁰⁵ ⁹⁰⁶ ⁹⁰⁷ ⁹⁰⁸ ⁹⁰⁹ ⁹¹⁰ ⁹¹¹ ⁹¹² ⁹¹³ ⁹¹⁴ ⁹¹⁵ ⁹¹⁶ ⁹¹⁷ ⁹¹⁸ ⁹¹⁹ ⁹²⁰ ⁹²¹ ⁹²² ⁹²³ ⁹²⁴ ⁹²⁵ ⁹²⁶ ⁹²⁷ ⁹²⁸ ⁹²⁹ ⁹³⁰ ⁹³¹ ⁹³² ⁹³³ ⁹³⁴ ⁹³⁵ ⁹³⁶ ⁹³⁷ ⁹³⁸ ⁹³⁹ ⁹⁴⁰ ⁹⁴¹ ⁹⁴² ⁹⁴³ ⁹⁴⁴ ⁹⁴⁵ ⁹⁴⁶ ⁹⁴⁷ ⁹⁴⁸ ⁹⁴⁹ ⁹⁵⁰ ⁹⁵¹ ⁹⁵² ⁹⁵³ ⁹⁵⁴ ⁹⁵⁵ ⁹⁵⁶ ⁹⁵⁷ ⁹⁵⁸ ⁹⁵⁹ ⁹⁶⁰ ⁹⁶¹ ⁹⁶² ⁹⁶³ ⁹⁶⁴ ⁹⁶⁵ ⁹⁶⁶ ⁹⁶⁷ ⁹⁶⁸ ⁹⁶⁹ ⁹⁷⁰ ⁹⁷¹ ⁹⁷² ⁹⁷³ ⁹⁷⁴ ⁹⁷⁵ ⁹⁷⁶ ⁹⁷⁷ ⁹⁷⁸ ⁹⁷⁹ ⁹⁸⁰ ⁹⁸¹ ⁹⁸² ⁹⁸³ ⁹⁸⁴ ⁹⁸⁵ ⁹⁸⁶ ⁹⁸⁷ ⁹⁸⁸ ⁹⁸⁹ ⁹⁹⁰ ⁹⁹¹ ⁹⁹² ⁹⁹³ ⁹⁹⁴ ⁹⁹⁵ ⁹⁹⁶ ⁹⁹⁷ ⁹⁹⁸ ⁹⁹⁹ ¹⁰⁰⁰

Handwritten text at the top of the page, appearing to be a header or title, possibly including the name 'John' and some numbers.

Second line of handwritten text, containing several lines of cursive script.

Third line of handwritten text, continuing the cursive writing.

Fourth line of handwritten text, showing more of the cursive script.

Fifth line of handwritten text, with some characters that appear to be 'X' and 'D'.

Sixth line of handwritten text, continuing the cursive script.

Seventh line of handwritten text, showing more of the cursive script.

Eighth line of handwritten text, continuing the cursive writing.

Ninth line of handwritten text, showing more of the cursive script.

Tenth line of handwritten text at the bottom of the page, possibly a signature or date.

uw wv γυ μαι vo με ε ε ε ε ε ε

ε ε v w w ω ω ω ω wv α αυ

Tη η η v δ

Μουσική
 Νημέως Α. Καμαράδου

Αθήνα
 Μουσική Τ. Β. Καμαράδου
 11 Αθηνών 111

Handwritten text at the top of the page, possibly a title or header, including the word "Introduction".

Handwritten text in the upper middle section, possibly a list or a set of notes.

Handwritten text in the lower left quadrant, possibly a signature or a date.

Handwritten text in the lower right quadrant, possibly a signature or a date.

Handwritten text in the lower middle section, possibly a signature or a date.

Αντιγραφή
Μισογίου Τ. Βλαχοπούλου
22 Αυγούστου 1921

Μετ' ε 1920

Ἑωθινὸν ΙΑ. «Σύντομον»

Μουσική
Κηρώς Α. Καμαράδου

Ἀντιγραφή
τῆς 18 Σεπτεμβρίου 1961

N.T.R.

Μουσική
Κηρώς Α. Καμαράδου
1881 Μουσική 88

Fourier Transform

Equation 1

$$f(x) = \int_{-\infty}^{\infty} F(\omega) e^{i\omega x} d\omega$$

$$F(\omega) = \frac{1}{2\pi} \int_{-\infty}^{\infty} f(x) e^{-i\omega x} dx$$

$$f(x) = \int_{-\infty}^{\infty} \left[\frac{1}{2\pi} \int_{-\infty}^{\infty} f(x) e^{-i\omega x} dx \right] e^{i\omega x} d\omega$$

$$f(x) = \int_{-\infty}^{\infty} F(\omega) e^{i\omega x} d\omega$$

$$F(\omega) = \frac{1}{2\pi} \int_{-\infty}^{\infty} f(x) e^{-i\omega x} dx$$

$$f(x) = \int_{-\infty}^{\infty} F(\omega) e^{i\omega x} d\omega$$

$$F(\omega) = \frac{1}{2\pi} \int_{-\infty}^{\infty} f(x) e^{-i\omega x} dx$$

$$f(x) = \int_{-\infty}^{\infty} F(\omega) e^{i\omega x} d\omega$$

ι ι δα α αι αι αι τωv δε ο ο και ε λεςες
N

ει βι λαι κει υ με ε πτεςεεεεε τρε ποιμανετα α
N

αααααp vi i i ααααα μσ ποιαιαιαι μαται νεεεεετα
N

προοοοο βυ γαααα αα ααααα αα ααααααααα μσ
N

ο δε ευ θεε ωωω εν δει υνυυ μεεεεε νοσ
N

το ο φυυυυ λοο τοφυ λοο ζο ορχον περιτ α α α λλοο
N

Μαα θη η τσ οσσε πυν θαααα αα ααανεεεεε
N

το ωωνταιςπρεσβει ει κει αις Χρηι ζεεεεε εεεε
N

εεεεεεεεε την ποι κνηνηοσ δεα φυυυυ
N

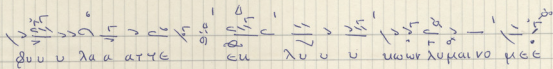
υυυ υυυ λαααα δεια

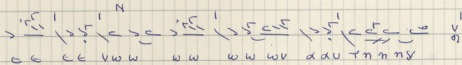
The first part of the document discusses the importance of maintaining accurate records of all transactions. It emphasizes that every entry should be supported by a valid receipt or invoice to ensure transparency and accountability.


In the second section, the author details the process of reconciling bank statements with the company's internal ledger. This involves comparing the opening and closing balances, as well as identifying any discrepancies that may arise from timing differences or errors.

The third section focuses on the classification of expenses. It provides a clear breakdown of how various costs are categorized into different accounts, such as salaries, rent, utilities, and supplies, to facilitate accurate financial reporting.

Finally, the document concludes with a summary of the key findings and recommendations. It stresses the need for regular audits and reviews to prevent fraud and ensure the integrity of the financial data.


 θυ υ λα α α τ ε


 ε υ λ υ υ υ κ ω ν λ υ μ α ι ν ο μ ε ε


 ε ε ε ν ω ω ω ω ω ν α λ υ τ η η η η

Νηλέω Α. Καμοράδου
 12 Δεκεμβρίου 1961

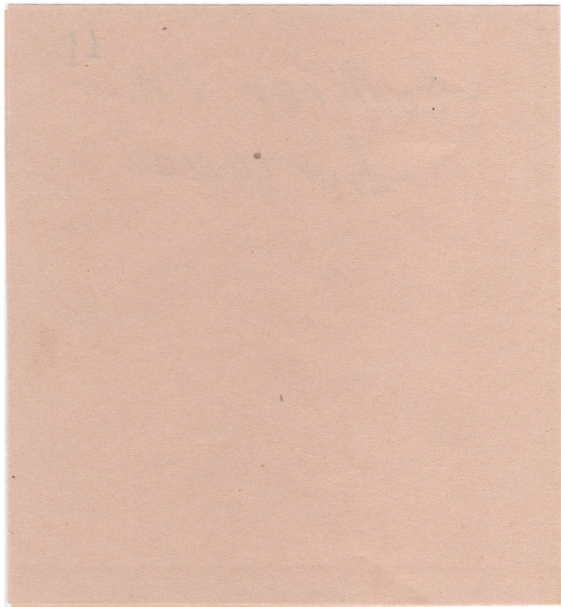
200

1. $\frac{1}{2} \times \frac{3}{4} = \frac{3}{8}$
2. $\frac{2}{3} \times \frac{5}{6} = \frac{10}{18} = \frac{5}{9}$
3. $\frac{3}{5} \times \frac{4}{7} = \frac{12}{35}$
4. $\frac{4}{8} \times \frac{6}{9} = \frac{24}{72} = \frac{1}{3}$
5. $\frac{5}{10} \times \frac{7}{14} = \frac{35}{140} = \frac{1}{4}$

6. $\frac{6}{12} \times \frac{8}{16} = \frac{48}{192} = \frac{1}{4}$
7. $\frac{7}{14} \times \frac{9}{18} = \frac{63}{252} = \frac{1}{4}$
8. $\frac{8}{16} \times \frac{10}{20} = \frac{80}{320} = \frac{1}{4}$
9. $\frac{9}{18} \times \frac{11}{22} = \frac{99}{396} = \frac{1}{4}$
10. $\frac{10}{20} \times \frac{12}{24} = \frac{120}{480} = \frac{1}{4}$

11. $\frac{1}{2} \times \frac{1}{3} = \frac{1}{6}$
12. $\frac{2}{3} \times \frac{1}{4} = \frac{2}{12} = \frac{1}{6}$
13. $\frac{3}{4} \times \frac{1}{5} = \frac{3}{20}$
14. $\frac{4}{5} \times \frac{1}{6} = \frac{4}{30} = \frac{2}{15}$
15. $\frac{5}{6} \times \frac{1}{7} = \frac{5}{42}$

11



20 12
Ἐρωθινὸν ἸΑ^{οὐ}

Ἰαγόν

11

№ 171

171

✓

λε Δο ο ζα Πα α τρι ι ι ι υ γι υι ω υ α γι

ω ω Πνεεεε ε ε εετ μα α α α τι Πα νε ρω ω ω

ω ων ε α αυ τον τοι μα α α θη η η η ται αι αι αι εεεε

ε ε ε ε Σω τη η η η η ηρ με τα α α α την

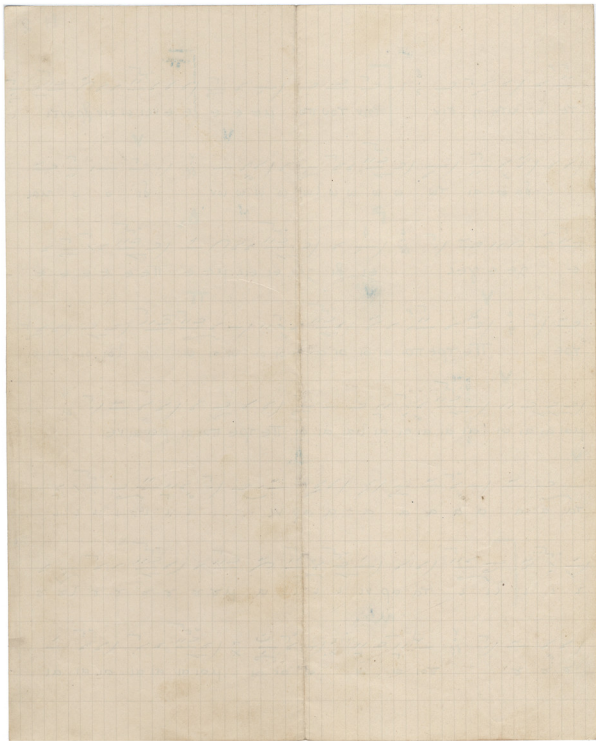
α α να α α α α α ζα α α α ον Σι ι ι ι ι

ι ι μω νι ι ι ι δεεεε ε δω ω ω υαε τιν τωπρω

βα α α α τω ων νο ο μη ην ει α γα α α πη ηε

α α α αν τε ε ε εεεεε ε ε ε υη η η η η η η η αν

Δ	_____	_____	Δ	}	o'
η	12	8	η		
ρ	_____	10	ρ		
η	8	_____	η		
θ	_____	_____	θ	}	
λ	10	12	λ		
π	_____	_____	Δ		
η	η		η		



Θοι οι με ε νε τα προ ο ο ο ο βα α α τα α α α

α α α α λα α α μσ. ο δε ευ θε ε ω ω

εν δει νυ ν με ε ε νοι το ο φιλι λ ο ο το φλ

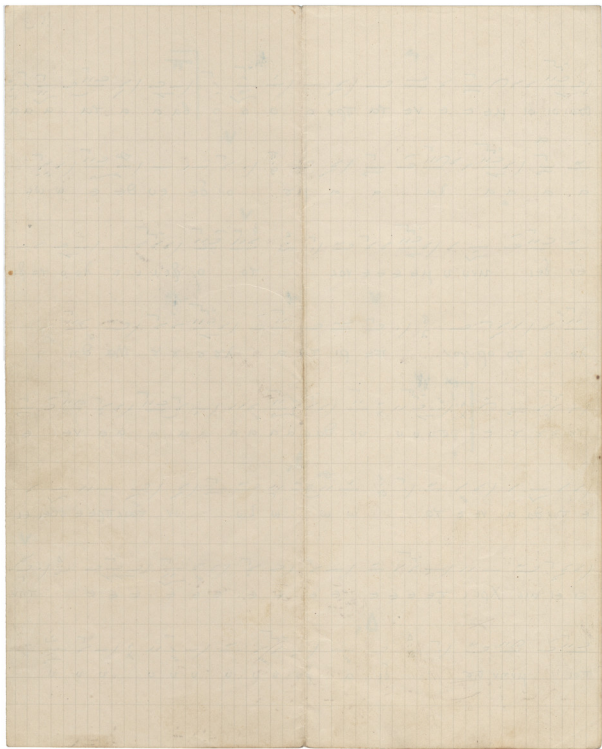
λο ο το οργον πε ρι τσ α λσ ε ε ε Μα θη ς

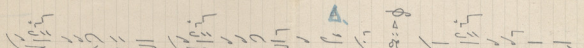
τε ε ε ε ε ου ν υ ν θα α α α α α α α νε ε

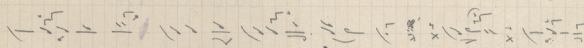
ε πιν θα α νε ε το ω ω ω λω ων τα ι τρε ε σ βει ε ι

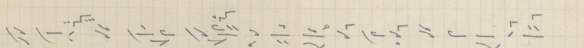
ει ει αι Χρι ι ζε ε ε ε ε ε ε ε ε ε ε ε ε ε ε ε ε τ η ν υ

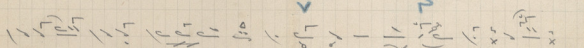
ποι μνην σσ δι α φου ου ου ου ου ου ου ου ου

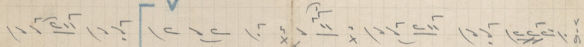



 λ α α α δ ι α ρ υ υ λ α α α τ ε ε ε ε ε ε υ


 λ υ υ υ υ υ λ υ υ υ υ υ x υ υ υ υ υ υ υ


 υ υ υ ε υ λ υ υ υ υ υ υ υ υ υ υ υ υ ε υ


 λ υ υ υ υ υ υ ω ω ω λ υ μ α ι ν ο μ ε ε ε ε


 ε ε ε ε ε ν ω ε ε υ ω ω ω ν α α υ τ η γ η ν

Ανλεξρύση
 τῆ 15 Σεπτεμβρίου 1961

Ε.έν.Θ. τῆ 24 Ἰουλίου 1915

'ΕΩΘΙΩΝ ΙΑ.'

((Αργόν))

H. T. B.

Ἑωθινόν ΙΑ' Ἀρχόν

Ἐπιλέως Α. Καραβίδου

ἸΗΧΟΣ $\frac{5}{4}$ ΝΗ

$\overset{1}{\text{C}} \overset{2}{\text{D}} \overset{3}{\text{E}} \overset{4}{\text{F}} \overset{5}{\text{G}} \overset{6}{\text{A}} \overset{7}{\text{B}} \overset{8}{\text{C}} \overset{9}{\text{D}} \overset{10}{\text{E}} \overset{11}{\text{F}} \overset{12}{\text{G}}$
 Ἦς Δοξοσα Πατρι λ λ λ γ γ υ υ υ ω γ α γ ω

$\overset{1}{\text{C}} \overset{2}{\text{D}} \overset{3}{\text{E}} \overset{4}{\text{F}} \overset{5}{\text{G}} \overset{6}{\text{A}} \overset{7}{\text{B}} \overset{8}{\text{C}} \overset{9}{\text{D}} \overset{10}{\text{E}} \overset{11}{\text{F}} \overset{12}{\text{G}}$
 Πνεεεε εε εε μαααα τι ε ε ε ε ε ε ε ε ε ε ε ε ε ε

$\overset{1}{\text{C}} \overset{2}{\text{D}} \overset{3}{\text{E}} \overset{4}{\text{F}} \overset{5}{\text{G}} \overset{6}{\text{A}} \overset{7}{\text{B}} \overset{8}{\text{C}} \overset{9}{\text{D}} \overset{10}{\text{E}} \overset{11}{\text{F}} \overset{12}{\text{G}}$
 ε α α υ του τοις Μαααα θνηνη η η αι αι αι αι ε ε ε ε ε ε ε ε

$\overset{1}{\text{C}} \overset{2}{\text{D}} \overset{3}{\text{E}} \overset{4}{\text{F}} \overset{5}{\text{G}} \overset{6}{\text{A}} \overset{7}{\text{B}} \overset{8}{\text{C}} \overset{9}{\text{D}} \overset{10}{\text{E}} \overset{11}{\text{F}} \overset{12}{\text{G}}$
 ζω τη η η η η η η η μο τα α α α την Αα ναααα

$\overset{1}{\text{C}} \overset{2}{\text{D}} \overset{3}{\text{E}} \overset{4}{\text{F}} \overset{5}{\text{G}} \overset{6}{\text{A}} \overset{7}{\text{B}} \overset{8}{\text{C}} \overset{9}{\text{D}} \overset{10}{\text{E}} \overset{11}{\text{F}} \overset{12}{\text{G}}$
 α α α ζα α α α α ε ν ε ε ε ε ε ε ε ε ε ε ε ε ε ε ε ε

$\overset{1}{\text{C}} \overset{2}{\text{D}} \overset{3}{\text{E}} \overset{4}{\text{F}} \overset{5}{\text{G}} \overset{6}{\text{A}} \overset{7}{\text{B}} \overset{8}{\text{C}} \overset{9}{\text{D}} \overset{10}{\text{E}} \overset{11}{\text{F}} \overset{12}{\text{G}}$
 ε ε ε ε ε ε ω ω υ α σ τ η ν τ η ν π ρ ο β α α α α α τ η ν ν ο ο η η η ν

$\overset{1}{\text{C}} \overset{2}{\text{D}} \overset{3}{\text{E}} \overset{4}{\text{F}} \overset{5}{\text{G}} \overset{6}{\text{A}} \overset{7}{\text{B}} \overset{8}{\text{C}} \overset{9}{\text{D}} \overset{10}{\text{E}} \overset{11}{\text{F}} \overset{12}{\text{G}}$
 ε α α γ α α α η η η α α α ν τ ε ε ε ε ε ε ε ε ε ε ε ε ε ε ε ε

$\overset{1}{\text{C}} \overset{2}{\text{D}} \overset{3}{\text{E}} \overset{4}{\text{F}} \overset{5}{\text{G}} \overset{6}{\text{A}} \overset{7}{\text{B}} \overset{8}{\text{C}} \overset{9}{\text{D}} \overset{10}{\text{E}} \overset{11}{\text{F}} \overset{12}{\text{G}}$
 η η η α ν τ ε ε υ η η ο υ τ η ν τ η ν ο ι μ ε ε ε ε ε υ α ε ι ρ ο ν

Handwritten title or header at the top left.

Handwritten title or header at the top right.

$$\frac{1}{2} \left(\frac{1}{2} + \frac{1}{2} \right) = \frac{1}{2} \left(\frac{2}{2} \right) = \frac{1}{2} \left(1 \right) = \frac{1}{2}$$

$$\frac{1}{3} \left(\frac{1}{3} + \frac{1}{3} + \frac{1}{3} \right) = \frac{1}{3} \left(\frac{3}{3} \right) = \frac{1}{3} \left(1 \right) = \frac{1}{3}$$

$$\frac{1}{4} \left(\frac{1}{4} + \frac{1}{4} + \frac{1}{4} + \frac{1}{4} \right) = \frac{1}{4} \left(\frac{4}{4} \right) = \frac{1}{4} \left(1 \right) = \frac{1}{4}$$

$$\frac{1}{5} \left(\frac{1}{5} + \frac{1}{5} + \frac{1}{5} + \frac{1}{5} + \frac{1}{5} \right) = \frac{1}{5} \left(\frac{5}{5} \right) = \frac{1}{5} \left(1 \right) = \frac{1}{5}$$

$$\frac{1}{6} \left(\frac{1}{6} + \frac{1}{6} + \frac{1}{6} + \frac{1}{6} + \frac{1}{6} + \frac{1}{6} \right) = \frac{1}{6} \left(\frac{6}{6} \right) = \frac{1}{6} \left(1 \right) = \frac{1}{6}$$

$$\frac{1}{7} \left(\frac{1}{7} + \frac{1}{7} + \frac{1}{7} + \frac{1}{7} + \frac{1}{7} + \frac{1}{7} + \frac{1}{7} \right) = \frac{1}{7} \left(\frac{7}{7} \right) = \frac{1}{7} \left(1 \right) = \frac{1}{7}$$

$$\frac{1}{8} \left(\frac{1}{8} + \frac{1}{8} + \frac{1}{8} + \frac{1}{8} + \frac{1}{8} + \frac{1}{8} + \frac{1}{8} + \frac{1}{8} \right) = \frac{1}{8} \left(\frac{8}{8} \right) = \frac{1}{8} \left(1 \right) = \frac{1}{8}$$

$$\frac{1}{9} \left(\frac{1}{9} + \frac{1}{9} + \frac{1}{9} + \frac{1}{9} + \frac{1}{9} + \frac{1}{9} + \frac{1}{9} + \frac{1}{9} + \frac{1}{9} \right) = \frac{1}{9} \left(\frac{9}{9} \right) = \frac{1}{9} \left(1 \right) = \frac{1}{9}$$

[Musical notation]
τε δι δα δι δι τω ω ω ω λ ω ω ω ω ω

[Musical notation]
ο ο ναι ε λρε γες ει βι λει αι μεε πεεεεε

[Musical notation]
τρε πετρε ποι οι οι αι οι οι οι οι οι οι οι οι οι οι οι

[Musical notation]
μα ι αι αι αι αι αι αι αι αι αι αι αι αι αι αι πετ ρε ποι αι αι αι αι αι

[Musical notation]
α α α α α α αρ νε ει ει ει ει ει ει ει ει τα αρ

[Musical notation]
νε ει ει α μαρ ρ ρ ρ ρ ρ ρ ρ ποι οι οι

[Musical notation]
οι οι οι μα ι αι αι αι αι αι αι ποι οι οι μεε εν ε τα προ ο ο ο ο

[Musical notation]
βα α α τα α α α α α α α α τα α α μαρ

[Musical notation]
ο δε ευ θεε ω ω ω εν δει υ ν υ υ μεεεε νοι το ο

183

1. $\frac{1}{x^2} = x^{-2}$
 $\frac{d}{dx} x^{-2} = -2x^{-3} = -\frac{2}{x^3}$

2. $\frac{1}{x^3} = x^{-3}$
 $\frac{d}{dx} x^{-3} = -3x^{-4} = -\frac{3}{x^4}$

3. $\frac{1}{x^4} = x^{-4}$
 $\frac{d}{dx} x^{-4} = -4x^{-5} = -\frac{4}{x^5}$

4. $\frac{1}{x^5} = x^{-5}$
 $\frac{d}{dx} x^{-5} = -5x^{-6} = -\frac{5}{x^6}$

5. $\frac{1}{x^6} = x^{-6}$
 $\frac{d}{dx} x^{-6} = -6x^{-7} = -\frac{6}{x^7}$

6. $\frac{1}{x^7} = x^{-7}$
 $\frac{d}{dx} x^{-7} = -7x^{-8} = -\frac{7}{x^8}$

7. $\frac{1}{x^8} = x^{-8}$
 $\frac{d}{dx} x^{-8} = -8x^{-9} = -\frac{8}{x^9}$

8. $\frac{1}{x^9} = x^{-9}$
 $\frac{d}{dx} x^{-9} = -9x^{-10} = -\frac{9}{x^{10}}$

9. $\frac{1}{x^{10}} = x^{-10}$
 $\frac{d}{dx} x^{-10} = -10x^{-11} = -\frac{10}{x^{11}}$

βι υ υ λο ο το βι λο ο ζο ο ρχον πε ρι το α λο ο ο ο

Μα θη η το ο ο ο ο ο π υ υ υ υ ν θα α α α α α α α α α α α

νε ε ε π υ ν θα α νε ε το ω ω ω λ ω ω ω ν ται π ρ ε ε σ θ ε ι κ

ει κ αι Χ ρ ι ζ ε ε ε ε ε ε ε ε ε ε ε ε ε ε ε τ η ν ποι

μ η ν ο σ δι α β υ υ υ υ υ υ υ υ υ λ α α α δ ι α

β υ υ λ α α α τ ε ε ε ε ε ε ε ε υ λ υ υ υ υ λ υ υ υ υ

χ υ υ υ υ υ υ υ υ υ ο υ λ υ υ υ υ υ υ υ υ υ

υ λ υ υ ε ι λ υ υ υ υ υ ω ω ω λ υ μ α ι ν ο μ ε ε ε ε

ε ε ε ε ν ω ω ω ω υ υ α α υ ι η η η η

Ἐγραψον ἐν Θεσσαλονικῆ τῆ 24 Ἰουλίου 1965

13 Σεπτεμβρίου 1961 Ν.Τ. Βλ.

20

20

2000

127