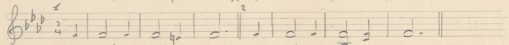
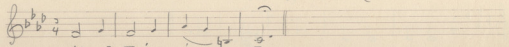


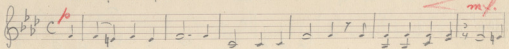
Ἄ μιν. Κύριε ἔλεη σον. Κύριε ἔλεη σον.



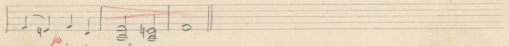
Παράσχε Κύριε. Παράσχε Κύριε



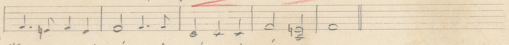
Καὶ τῷ Πνεύματι - σου



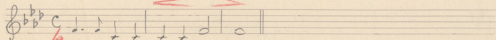
Πατέρι ὃν υἱ ἄγιον Πνεῦμα Τριάδα ὁμοῦσι



ον - υἱ ἄγιον.



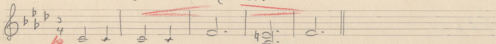
Ἐλεονείρησθε σίαναι νέσεως.



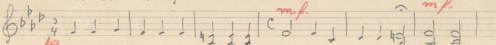
*mf* / *p* Και μετὰ τὸ Πνεῦμα τὸς Σς.



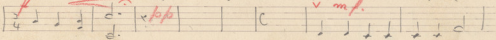
πρὸς τὸν Κύ-ριον.



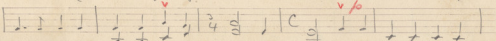
Ἄ-ξι-ον ἑ-στὶν δι-ψα-λ-ον.



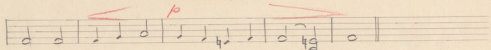
Ἄ-ξι-ος Ἄ-ξι-ος Ἄ-ξι-ος Κύ-ριος Σα-βω-θ ἁ-γί-ος



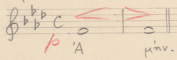
ὁ-ὄ-ρα νός ἡ ἡ γῆ τῆς δόξης σου ὡ-σαν ναὶ ἐν τοῖς ὑ-ψι-



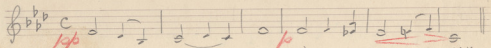
σοῖς εὐ-λο-γεῖς μέ-νος ὁ-ἐρ-χό-με-νος ἐν ὁ-νό-μα-τι Κυ-



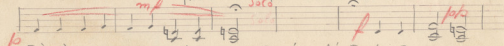
ρι ου ω σαν να ο εν τοις υ ψι - ζοις.



A μιν.



Σε υ - μιν - - - Solo μεν Σε ευ χο γο - - - μεν



Σοι ευ χα ρι ζο μεν Κυ ρι ε υς δε ο μεθι Σε ο Θε ος η



μιν.

