

Μοδάβερ

Παράκληση



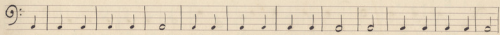
ΤΕΤΡΑΔΙΟΝ ΜΟΥΣΙΚΗΣ

Μιζάου Τ. Βραχοπούλου

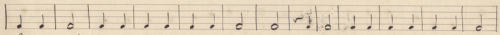
ΦΥΛ. 20

ΜΟΥΣΙΚΟΣ ΕΚΔΟΤΙΚΟΣ ΟΙΚΟΣ
ΓΡ. ΚΩΝΣΤΑΝΤΙΝΙΔΗ
ΣΤΟΑ ΑΡΣΑΚΕΙΟΥ 1^α

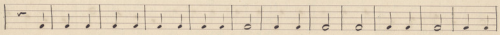




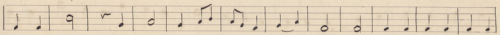
Τοῦ γί' σου εὐχαρι σθένος ἡ σὸ τῶν Ἱ ου εἰς ὡρ ἡ εὐχαρι ὡ τῶν



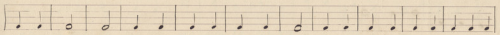
δε γας σὸν τῶν τῶ ἀ χροῖ τῶν σου Σὺ μα ἀ νί ζησθι ἡ με ποσ Σω τῆρ



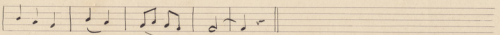
δω ρού με νοσ τῶν εὐσμε τῶν τῶ ἡν δι α' τοῦ το αἰ δυ νά μοισ τῶν



οὐ ρα τῶν ἔ θε ὡρ σοι - ζω - ο δο - τα δο ξα ἡ Ἱ Α να γά ρι



σου Χρι ζέ' δο ξα ἡ Ἱ βα ρι γεί α σου δο ξα ἡ Ἱ οἰ νο νο μί α σου



μόνε δε γάρ - θρω - σε -

Ἀποστολικὸν ἕκτος 9.

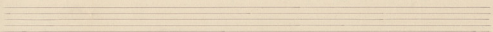
Εὐ φρα νέ στω λά οὐ πά νι α ἄ γα γ. γε ἄ στω τί ε - σι γε

α - ὄ λε ε σοί η σε κρύ ζος ἐν θρα χί ο νι αὐ τοῦ ὁ κή ρι

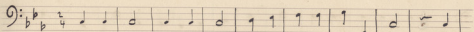
ος ε σά ηε σε τῷ θα νά τω λὸν - θά να ζον σρω λό ζο

νος τῶν νε υψῶ ε γέ νε ζο ευ νοι γί ας Ἄ σου ἐφ ρή σα το η

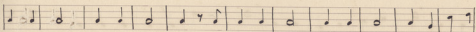
μᾶς τῆ σα ρέ σκε τῷ υσ' ομ ζο μέ γα ε - γε - οο -



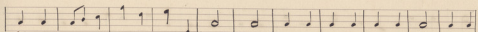
Παροισύμιον ἦχος Α'.



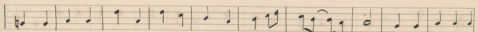
Τον σου ρά νασ τον λό γον πα τρι ες τόνμα λε τον



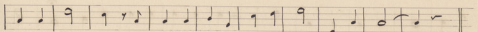
ει παρ θε ου λε χθεν τα εις σωτη ρί αν η μων α νυ μωσω



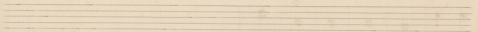
μεν αι σλοι ες απο αυτη σω μεν ε η ην δό υμ σε σα ρ μι α νες



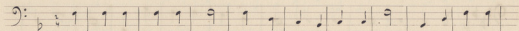
θην εν λη σταυρω ες θα - να τον υ πο - μει - ναι ες ε γει πατρη



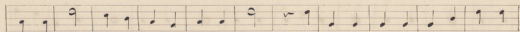
λε θε ω λαο εν τη εν δό ξη Α να ζα ces α λου -



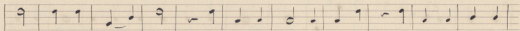
Ἀπολυτίκιον ἕως π' β'.



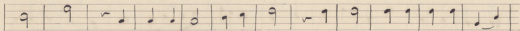
Ἄγ γε γε ναί· Ὁ ναί· μεις ἐσσι· τὸ μὴ μὰ Σου ἐγὼ οἱ θεοὶ γὰρ·



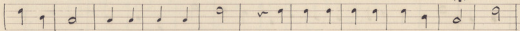
σοι θεοὶ ἀθεοῦ ἡμῶν· σοὶ ἐξ ἑσθλα τοῦ Νβαρία ἐν τῷ



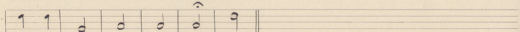
λάθῃ τῆς τοῦ - σα τοῦ ἔχου τόν σου Σῶμα, ἐκὺν γευσας τὸν



Ἄδεν μὴ πειραθεῖς ἰσθῶν τοῦ ὑπὲρ ἡμῶν Πατρὸς -



τη δὲ πού με νοσὶν τῶν τῶν οἱ ἀναζῆς ἐκ τῶν νεῦων Κυ



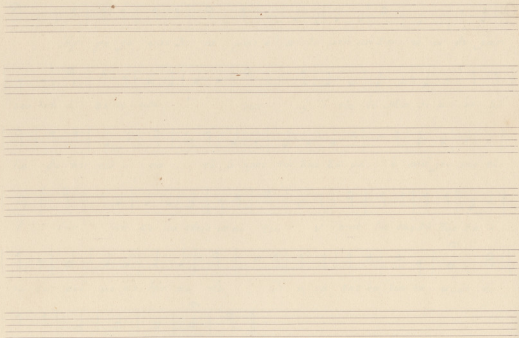
ρι εὐδοξία· Σοι -

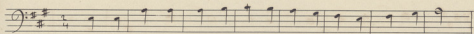
Ἐπισημειωτικὸν Ἦχος βαρῆς.

G: 4

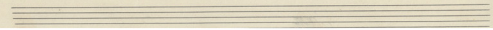
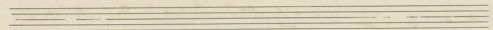
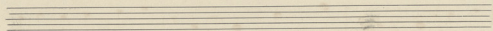
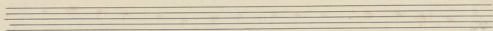
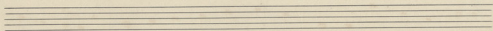
The page contains seven horizontal musical staves. The top staff is marked with a treble clef (G) and a 4/4 time signature. The remaining six staves are blank.

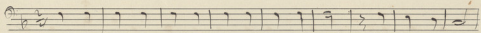
Πατριμίων ἦχος ς δ.



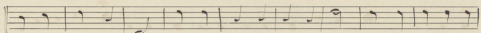


Handwritten musical notation on a single staff. The notation is in bass clef, 2/4 time, and one sharp (F#). The melody consists of the following notes: G2 (quarter), G2 (quarter), G2 (quarter), A2 (quarter), B2 (quarter), A2 (quarter), G2 (quarter), G2 (quarter), A2 (quarter), B2 (quarter), A2 (quarter), G2 (quarter). There are slurs over the first two notes and the last two notes. The lyrics below the staff are: *Ja - - - - - é - - - - -*

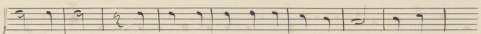




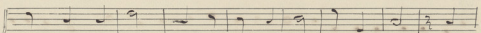
ὡς τῶν αἰχμαλώτων ἐλευθερωτῆς ὑπὸ τῶν πτωχῶν



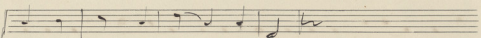
ὑπερασπίδης ἀσθενοῦντων ἰατροῦ βασιλέων ὑ



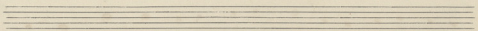
πέριμαχος τροπαίου θόρυβου χαρομάτου Γε

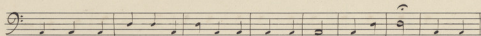


ώρ - γι ε πρέσβευε Χριστῶ τῷ Θεῷ σω

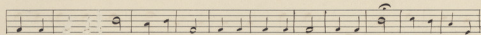


θῆναι τὰς ψυχὰς - ἡμῶν.

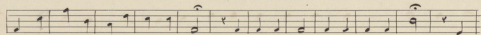




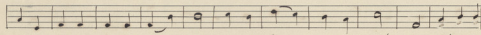
των ορθοδοξων προλατριν εν σαρκι αγχεχον υθου



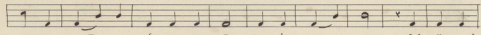
μα τουρ γον θεοδωρον νεοφανα τα ημιν επαινεσω



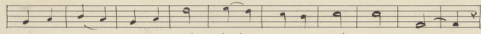
μεν πλοισθειον γερασιμον οτι αξιωσπαραθεου α



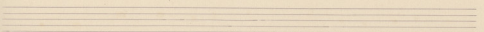
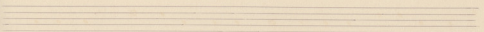
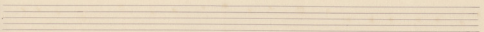
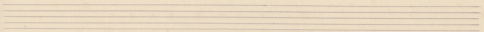
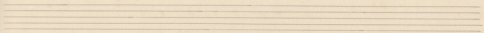
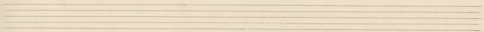
πειχιθενιαματων την ενναον χαριν ρωνυσι

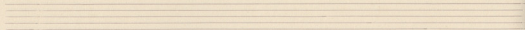
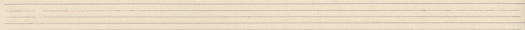
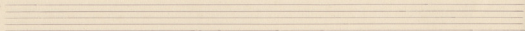
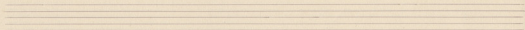
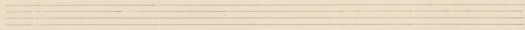
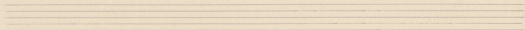


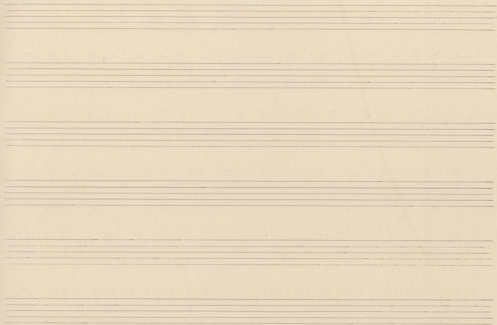
τους νοσουντας δαιμονωντας ιαται δι ο υαι

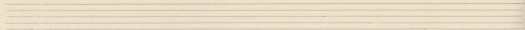
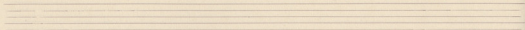
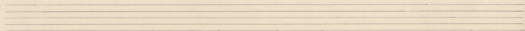
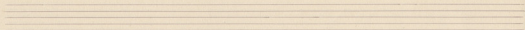
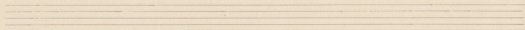
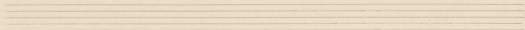


τοις τιμωσιν αυτον θρυει ιαματα.









Bassi II
Profondi

Κύριε Ἐλεῆσον

1

Ὁ - - μὴν Κύριε ἔ - γέ ν σου Κύριε ἔ

γέ ν σου Κύριε ἔ γέ ν σου ἔ - γέ ν σου

2

Κύριε ἔ γέ ν σου ἔ γέ ν σου ἔ γέ ν σου ἔ γέ ν σου ἔ

γέ ν σου

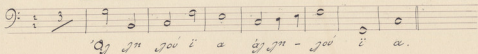
Μεσοία

1

Κύριε ἔ γέ ν σου Κύριε ἔ γε - ν σου Κύριε ἔ γέ ν σου

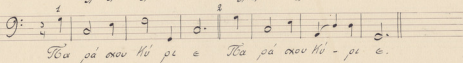
Σοὶ Κύριε - ε.

Αγγελία



Αγγελη σου εα αγγελη σου εα.

Καράοικου
Κύριε.



Καράοικου Κύριε. Καράοικου Κύριε.



Καράοικου Κύριε.

