

1012

Q. A. New

22

A. A. K

[Faint, illegible handwriting on lined paper, possibly bleed-through from the reverse side.]

10

Handwritten text, likely bleed-through from the reverse side of the page.

Handwritten text, likely bleed-through from the reverse side of the page.

Handwritten text, likely bleed-through from the reverse side of the page.

Handwritten text, likely bleed-through from the reverse side of the page.

Handwritten text, likely bleed-through from the reverse side of the page.

Handwritten text, likely bleed-through from the reverse side of the page.

Handwritten text, likely bleed-through from the reverse side of the page.

Handwritten text, likely bleed-through from the reverse side of the page.

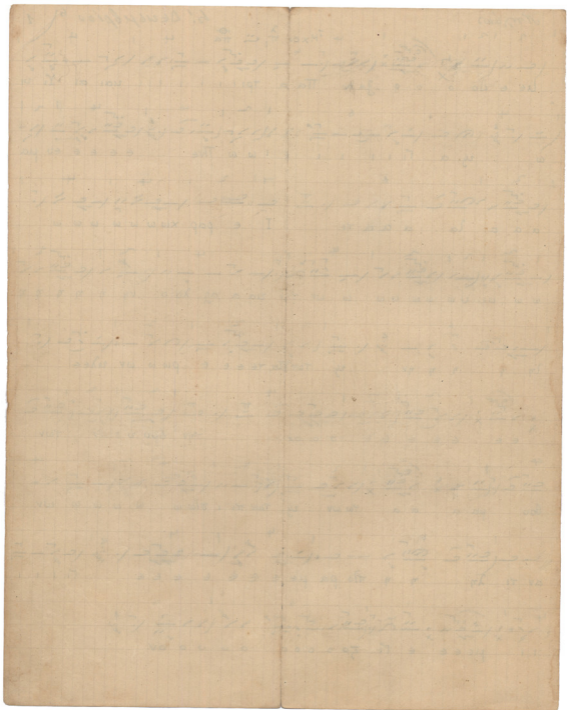
Handwritten text, likely bleed-through from the reverse side of the page.

Agri Nuvuz

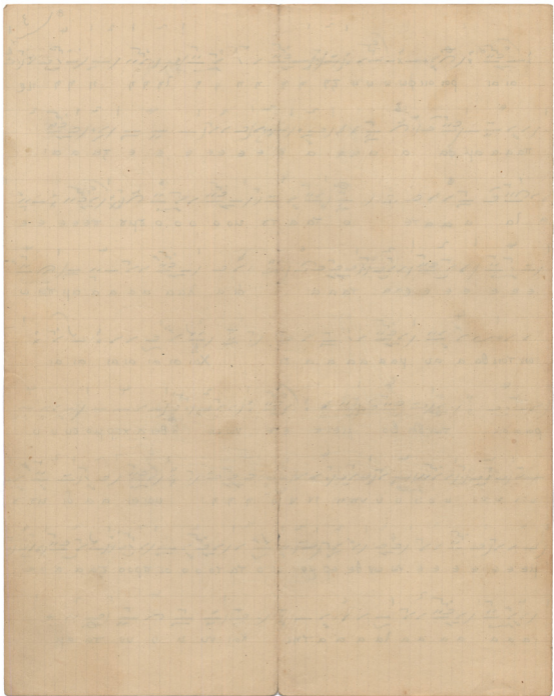
- 6024

6th December

B. N. K.

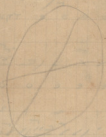
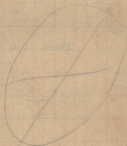


[Faint, illegible handwriting on lined paper, possibly bleed-through from the reverse side.]



Τῆς 5^{ης} Δεκεμβρίου
Δόξα τῆς Ἐσπερίου
Μουσῆς
Νηλέως Α. Καμοράδου

Σὺν τῷ Κ. Χρυσῷ



Ν.Α.Κ.

