

Βιολόγος

Ζωντανή Σειρά

1904

(Θ. Σ. Ζανναρίδης)

Zanoudou Epexila

Andte

p *leggerissimo*

Allegro

Τὴν ἡμετέραν - - - για σου καὶ μετέωρα καὶ μετέωρα

allegro

ναὶ δι - ποι καὶ τὸ ἔκρωτο καὶ τὸ ἔκρωτο

Allegro

σου καὶ μετέωρα καὶ μετέωρα καὶ μετέωρα - ἄν σου

mai l'oi wogoi mai l'oi wogoi mo - poi - di loi Me' l'oi l'oi wogoi woi

The first system of the handwritten musical score consists of two staves. The upper staff is a vocal line with a treble clef and a common time signature. It contains the lyrics "mai l'oi wogoi mai l'oi wogoi mo - poi - di loi Me' l'oi l'oi wogoi woi". The lower staff is a piano accompaniment with a grand staff (treble and bass clefs) and a common time signature. The music is written in a style characteristic of early 20th-century folk or popular music.

mi lo marlozi lo tou - mi Me' l'oi uni zozomi mai -

The second system of the handwritten musical score consists of two staves. The upper staff is a vocal line with a treble clef and a common time signature. It contains the lyrics "mi lo marlozi lo tou - mi Me' l'oi uni zozomi mai -". The lower staff is a piano accompaniment with a grand staff and a common time signature. The music continues with similar rhythmic patterns and chord structures as the first system.

vui loz androu wofou xó

col canto

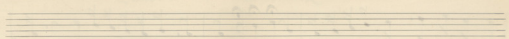
col canto

col canto

The third system of the handwritten musical score consists of two staves. The upper staff is a vocal line with a treble clef and a common time signature. It contains the lyrics "vui loz androu wofou xó". The lower staff is a piano accompaniment with a grand staff and a common time signature. This system includes performance markings: "col canto" is written three times, each with a vertical line indicating a specific point in the piano accompaniment. The music concludes with a final cadence.

mai mi nu l'oi wogoi xa - - co.

The fourth system of the handwritten musical score consists of two staves. The upper staff is a vocal line with a treble clef and a common time signature. It contains the lyrics "mai mi nu l'oi wogoi xa - - co.". The lower staff is a piano accompaniment with a grand staff and a common time signature. The music concludes with a final cadence, marked with a double bar line and repeat dots.



Faint handwritten text, possibly a title or subtitle.

