

Νέον ἔτος

Basso.

Né-or é-tos é-ra-tý-je

év-év-xí-ar á-raf-pé-je ús tos

néouor új xa-pá, év-év-xí-ar új xa-

pá. ó-joí lé-pa rap-le-póv-re ré-joí ré-

égn-póv-dóv-re bó-ou ó-re-pa gas-

pá. ó ma-de-ras éw-pa bíp-ra

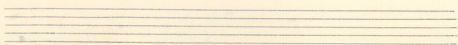
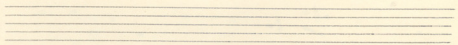
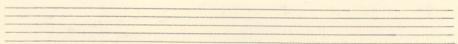
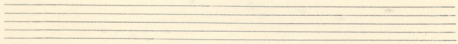
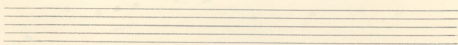
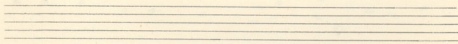
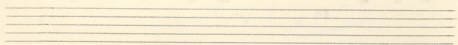
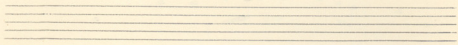
új év-xáís ó ay-joí gíp-ra é-zw naí-ru xu-yp-

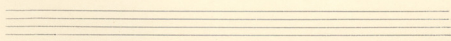
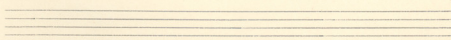
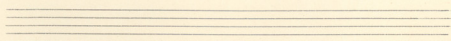
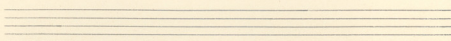
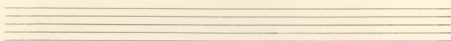
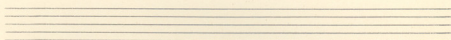
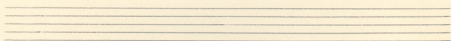
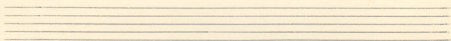
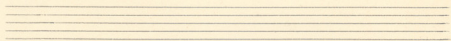
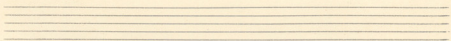
ríai é-zw naí-ru xu-yp-ríai Mí-rae

otó-na á égn-dóv-ye év-év-xí-a yíá rá-i-

Handwritten musical notation on a single staff. The notation includes a treble clef, a key signature of one sharp (F#), and a 4/4 time signature. The melody consists of quarter and eighth notes. Below the staff, the lyrics are written in Greek: *δοῦ-τε ἐν-δο-ξί-α θεῷ πατρί-δοῦ-τε τῷ ἱε-*

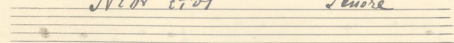
Handwritten musical notation on a single staff. The notation includes a treble clef and a 4/4 time signature. The melody consists of quarter and eighth notes. Below the staff, the lyrics are written in Greek: *ροῦ-τε ἐν χρο-νία -*





Níox étos

Tenore



Ní-ox é-τος á-ra-

gíxh ev-pw-xi-ar á-ra-yp-γί-μη ús τος

uóuox ú χαι-ρά ús τος uó-uox ú χαι-

ρά ó-fox τώ-ρα uaple-pwve τίξος τί-u

σπ-ρω-δω-ν-ε-ε- τό-σα ó-ru-ρα γαι-

ρά

ó na-de-ros ú-ρα úp-ru ú éw

χαι ó úγξος gίp-ru é-ξw uá-ru χαι-yp-

ρίά é-ξw uá-ru χαι-yp-ρίά,

Mi-ra do-u-a do ev-xn-do-u-a E-v-ro-

xi-a gla-rai-do-u-a E-v-ro- xi-a glari-

do-u-a mi ip-so-u-en xpo-vie-

