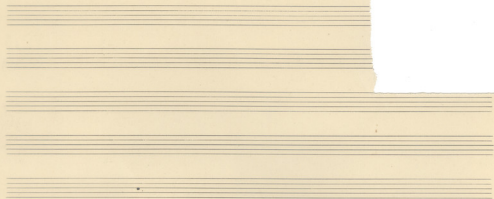
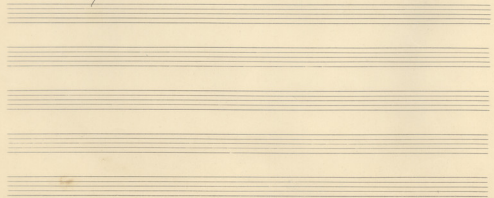


Griechische Ballade  
für  
Orchester



1.



*Allegro  
con moto*

*Ballade N° 2. pour Orchestre / Grecque /*

Handwritten musical notation for the first system of the piece. It features a treble and bass clef with a 4/4 time signature. The notation includes various note values, rests, and dynamic markings.

Handwritten musical notation for the second system of the piece. It continues the melodic and harmonic development from the first system.

Handwritten musical notation for the third system of the piece. The notation is heavily crossed out with diagonal lines, indicating a section that has been deleted or revised. A large 'a' is written above the first measure, and a '17.' is written above the second measure.

Handwritten musical notation for the fourth system of the piece. Similar to the third system, this section is also heavily crossed out with diagonal lines. A large 'B' is written above the second measure.

Handwritten musical score system 1, consisting of two staves. The upper staff contains a melodic line with various notes and rests, including a measure with a fermata. The lower staff contains a bass line with notes and rests. The word "cresc." is written above the upper staff in the second measure.

Handwritten musical score system 2, consisting of two staves. The upper staff features a melodic line with a fermata in the second measure. The lower staff contains a bass line with notes and rests.

Handwritten musical score system 3, consisting of two staves. The upper staff contains a melodic line with notes and rests. The lower staff contains a bass line with notes and rests.

Handwritten musical score system 4, consisting of two staves. The upper staff contains a melodic line with notes and rests. The lower staff contains a bass line with notes and rests. The word "dimin." is written above the upper staff in the second measure.

*mf* *dimin* *espressivo*

This system contains two staves of handwritten musical notation. The upper staff is in treble clef and the lower in bass clef. The music begins with a dynamic marking of *mf*. The first staff has a melodic line with slurs and a *dimin* marking. The second staff has a more active melodic line with a *espressivo* marking and a slur. The bass staff provides a harmonic accompaniment.

*ritocco* *mp* *dimin*

This system contains two staves of handwritten musical notation. The upper staff is in treble clef and the lower in bass clef. The music begins with a dynamic marking of *mp*. The first staff has a melodic line with slurs and a *dimin* marking. The second staff has a more active melodic line with a *dimin* marking and a slur. The bass staff provides a harmonic accompaniment.

*pp*

This system contains two staves of handwritten musical notation. The upper staff is in treble clef and the lower in bass clef. The music begins with a dynamic marking of *pp*. The first staff has a melodic line with slurs. The second staff has a more active melodic line with a slur. The bass staff provides a harmonic accompaniment.

*p*

This system contains two staves of handwritten musical notation. The upper staff is in treble clef and the lower in bass clef. The music begins with a dynamic marking of *p*. The first staff has a melodic line with slurs. The second staff has a more active melodic line with a slur. The bass staff provides a harmonic accompaniment.

Handwritten musical notation on a five-line staff. The notation includes a treble clef, a common time signature (C), and various rhythmic markings such as eighth and sixteenth notes, rests, and beams. There are also some handwritten annotations below the staff, possibly indicating fingerings or performance instructions.

Handwritten musical notation on a five-line staff. The notation includes a treble clef, a common time signature (C), and various rhythmic markings such as eighth and sixteenth notes, rests, and beams. There are also some handwritten annotations below the staff, possibly indicating fingerings or performance instructions.

Handwritten musical notation on a five-line staff. The notation includes a treble clef, a common time signature (C), and various rhythmic markings such as eighth and sixteenth notes, rests, and beams. There are also some handwritten annotations below the staff, possibly indicating fingerings or performance instructions.

Handwritten musical notation on a five-line staff. The notation includes a treble clef, a common time signature (C), and various rhythmic markings such as eighth and sixteenth notes, rests, and beams. There are also some handwritten annotations below the staff, possibly indicating fingerings or performance instructions.

Handwritten signature and the number 2/4.



*espressivo*

*dimin.*

*I tempo*

*poco rall.*

Handwritten musical score system 1, consisting of two staves. The upper staff contains a melodic line with various notes and rests. The lower staff contains a bass line with notes and rests. A large section of the score is obscured by a dense grid of diagonal lines, likely representing a complex or dense texture.

Handwritten musical score system 2, consisting of two staves. The upper staff contains a melodic line with various notes and rests. The lower staff contains a bass line with notes and rests. The notation includes various rhythmic values and accidentals.

Handwritten musical score system 3, consisting of two staves. The upper staff contains a melodic line with various notes and rests. The lower staff contains a bass line with notes and rests. The notation includes various rhythmic values and accidentals.

Handwritten musical score system 4, consisting of two staves. The upper staff contains a melodic line with various notes and rests. The lower staff contains a bass line with notes and rests. The notation includes various rhythmic values and accidentals.





Handwritten musical notation system 1, consisting of three staves. The top staff contains a melodic line with various note values and rests. The middle and bottom staves contain accompaniment with vertical stems and some note heads.

Handwritten musical notation system 2, consisting of three staves. The notation continues with melodic and accompaniment parts.

Handwritten musical notation system 3, consisting of three staves. A large, stylized signature or initials "B.B." are written above the first staff. The notation includes melodic lines and accompaniment.

Handwritten musical notation system 4, consisting of three staves. This system is heavily crossed out with multiple diagonal lines, indicating it is a revision or a section to be discarded.

2

Handwritten musical score system 1. The system consists of two staves. The upper staff contains a melodic line with various notes and rests, and is heavily crossed out with diagonal lines. The lower staff contains a bass line with notes and rests, also partially crossed out. There are some markings like "p" and "f" in the lower staff.

Handwritten musical score system 2. Similar to the first system, it has two staves. The upper staff is mostly obscured by diagonal crossing-out lines. The lower staff shows a bass line with notes and rests, with some markings like "p" and "f".

Handwritten musical score system 3. This system also has two staves. The upper staff is heavily crossed out. The lower staff contains a bass line with notes and rests, and includes markings such as "p", "f", and "c.".

Handwritten musical score system 4. The system consists of two staves. The upper staff is mostly obscured by diagonal crossing-out lines. The lower staff contains a bass line with notes and rests, and includes markings such as "p", "f", and "c.".



Handwritten musical score for the first system. It features a treble clef, a key signature of one sharp (F#), and a 4/4 time signature. The music includes a melody with slurs and a bass line with rhythmic notation. A large section of the top staff is heavily scribbled out with dark ink.

Handwritten musical score for the second system. It continues the piece with similar notation and dynamics like "allegro" and "rit". The notation includes various rhythmic values and slurs.

Handwritten musical score for the third system. It shows a change in dynamics and tempo markings such as "allegro" and "rit". The notation includes various rhythmic values and slurs.

Handwritten musical score for the fourth system. It concludes the piece with a final cadence and dynamic markings. The notation includes various rhythmic values and slurs.

Handwritten musical notation on a five-line staff. The notation includes rhythmic markings such as vertical lines with flags and beams, and notes with stems. The piece begins with a treble clef and a common time signature (C). The notation is dense and appears to be a rhythmic exercise or a short piece.

Handwritten musical notation on a five-line staff, continuing the piece from the previous system. It features similar rhythmic markings and notes, maintaining the common time signature.

Handwritten musical notation on a five-line staff, continuing the piece. The notation includes various rhythmic patterns and notes, with some notes having stems pointing downwards.

Handwritten musical notation on a five-line staff, continuing the piece. This system includes a double bar line and some notes with stems pointing downwards. The notation is consistent with the previous systems.

Four empty musical staves, indicating the end of the written music on this page.

a.

Handwritten musical notation for system 1, measures 1-2. The system consists of two staves. The upper staff contains a melodic line with eighth and sixteenth notes, and the lower staff contains a bass line with quarter and eighth notes. The key signature has one sharp (F#).

Handwritten musical notation for system 2, measures 3-4. The system consists of two staves. The upper staff continues the melodic line, and the lower staff continues the bass line. The notation includes various rhythmic values and rests.

Handwritten musical notation for system 3, measures 5-6. The system consists of two staves. The upper staff continues the melodic line, and the lower staff continues the bass line. The notation includes various rhythmic values and rests.

Handwritten musical notation for system 4, measures 7-8. The system consists of two staves. The upper staff continues the melodic line, and the lower staff continues the bass line. The notation includes various rhythmic values and rests.

b.

Handwritten musical notation for system 5, measures 9-10. The system consists of two staves. The upper staff continues the melodic line, and the lower staff continues the bass line. The notation includes various rhythmic values and rests.

Handwritten musical notation for system 6, measures 11-12. The system consists of two staves. The upper staff continues the melodic line, and the lower staff continues the bass line. The notation includes various rhythmic values and rests.



Handwritten musical notation on a single staff, featuring rhythmic patterns and a 4/4 time signature at the end.

Handwritten musical notation on a single staff, continuing the piece with various rhythmic values.

Handwritten musical notation on a single staff, including a section with a 7/4 time signature.

Handwritten musical notation on a single staff, featuring a section with a 3/4 time signature and dynamic markings such as *dim.* and *rit.*

Handwritten musical notation on a single staff, showing complex rhythmic patterns and some corrections.

Handwritten musical notation on a single staff, concluding the piece with a final cadence and a large 'C' time signature.

Handwritten musical notation on a single staff. It begins with a treble clef, a key signature of one sharp (F#), and a 3/4 time signature. The notation includes a series of notes with stems, some with accidentals, and a large bracketed section. There are some scribbles at the beginning of the staff.

Handwritten musical notation on two staves. The top staff has a treble clef and the bottom staff has a bass clef. The notation includes notes, rests, and various markings such as 'f' and 'p'.

Handwritten musical notation on two staves. The top staff has a treble clef and the bottom staff has a bass clef. The notation includes notes, rests, and various markings such as 'f' and 'p'. There is a large bracketed section at the end of the bottom staff.

3/4

Handwritten musical notation on a five-line staff. The first measure contains a treble clef, a key signature of one flat (B-flat), and a 3/4 time signature. The melody consists of quarter notes: G4, A4, Bb4, C5, Bb4, A4, G4. The bass line consists of quarter notes: G3, F3, E3, D3. The second measure contains a treble clef, a key signature of one flat, and a 3/4 time signature. The melody consists of quarter notes: G4, A4, Bb4, C5, Bb4, A4, G4. The bass line consists of quarter notes: G3, F3, E3, D3. The third measure contains a treble clef, a key signature of one flat, and a 3/4 time signature. The melody consists of quarter notes: G4, A4, Bb4, C5, Bb4, A4, G4. The bass line consists of quarter notes: G3, F3, E3, D3.

Handwritten musical notation on a five-line staff. The first measure contains a treble clef, a key signature of one flat, and a 3/4 time signature. The melody consists of quarter notes: G4, A4, Bb4, C5, Bb4, A4, G4. The bass line consists of quarter notes: G3, F3, E3, D3. The second measure contains a treble clef, a key signature of one flat, and a 3/4 time signature. The melody consists of quarter notes: G4, A4, Bb4, C5, Bb4, A4, G4. The bass line consists of quarter notes: G3, F3, E3, D3. The third measure contains a treble clef, a key signature of one flat, and a 3/4 time signature. The melody consists of quarter notes: G4, A4, Bb4, C5, Bb4, A4, G4. The bass line consists of quarter notes: G3, F3, E3, D3. The fourth measure contains a treble clef, a key signature of one flat, and a 3/4 time signature. The melody consists of quarter notes: G4, A4, Bb4, C5, Bb4, A4, G4. The bass line consists of quarter notes: G3, F3, E3, D3.

Handwritten musical notation on a five-line staff. The first measure contains a treble clef, a key signature of one flat, and a 3/4 time signature. The melody consists of quarter notes: G4, A4, Bb4, C5, Bb4, A4, G4. The bass line consists of quarter notes: G3, F3, E3, D3. The second measure contains a treble clef, a key signature of one flat, and a 3/4 time signature. The melody consists of quarter notes: G4, A4, Bb4, C5, Bb4, A4, G4. The bass line consists of quarter notes: G3, F3, E3, D3. The third measure contains a treble clef, a key signature of one flat, and a 3/4 time signature. The melody consists of quarter notes: G4, A4, Bb4, C5, Bb4, A4, G4. The bass line consists of quarter notes: G3, F3, E3, D3. The fourth measure contains a treble clef, a key signature of one flat, and a 3/4 time signature. The melody consists of quarter notes: G4, A4, Bb4, C5, Bb4, A4, G4. The bass line consists of quarter notes: G3, F3, E3, D3. The fifth measure contains a treble clef, a key signature of one flat, and a 3/4 time signature. The melody consists of quarter notes: G4, A4, Bb4, C5, Bb4, A4, G4. The bass line consists of quarter notes: G3, F3, E3, D3.





Handwritten musical notation on a single staff, consisting of several measures of rhythmic notation with stems and beams.

Handwritten musical notation on a single staff, including a treble clef, a 4/4 time signature, and several measures of rhythmic notation.

Handwritten musical notation on a single staff, including a treble clef, a 4/4 time signature, and several measures of rhythmic notation.

Handwritten musical notation on a single staff, including a treble clef, a 4/4 time signature, and several measures of rhythmic notation.





