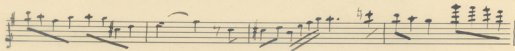
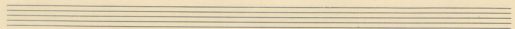


Fuge

für

Violine und Klavier

J. L. Zialot



A handwritten musical score consisting of six staves. The notation is in a single system, likely for a piano or similar instrument. The first staff begins with a treble clef and a key signature of one sharp (F#). The music is characterized by dense, rapid passages, often using sixteenth or thirty-second notes, with many beamed notes. There are several dynamic markings, including *ff* (fortissimo) and *sf* (sforzando), and some phrasing slurs. The second staff continues the melodic line with some rests. The third staff features more complex rhythmic patterns and some triplet-like figures. The fourth staff has a *sf* marking and continues the dense texture. The fifth staff shows a change in the melodic contour. The sixth staff concludes the piece with a final cadence, marked with a double bar line and repeat dots.

Seven empty musical staves, each consisting of five horizontal lines, arranged vertically. These staves are completely blank and do not contain any musical notation.

