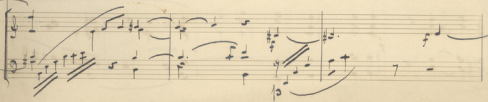
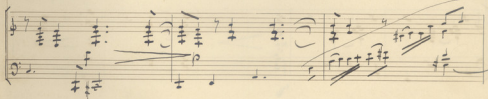
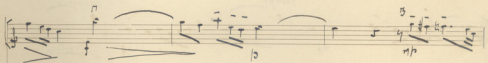
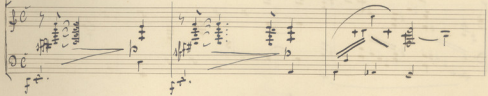


(Tutti - meno)

Imyrua

Tanzballade No 1

*Sostenuto
col appassionato*



Handwritten musical score for the first system. The top staff is in treble clef and contains a melodic line with a fermata over the first measure, followed by a series of eighth and sixteenth notes. The bottom staff is in bass clef and contains a bass line with chords and some slurs. Dynamics include *mf* and *ten.* (tension).

Handwritten musical score for the second system. The top staff is in treble clef and contains a melodic line with a fermata over the first measure, followed by a series of eighth and sixteenth notes. The bottom staff is in bass clef and contains a bass line with chords and some slurs. Dynamics include *mf* and *Allegro*.

Handwritten musical score for the third system. The top staff is in treble clef and contains a melodic line with a fermata over the first measure, followed by a series of eighth and sixteenth notes. The bottom staff is in bass clef and contains a bass line with chords and some slurs. Dynamics include *mf* and *lungo* (long).

Handwritten musical score for the fourth system. The top staff is in treble clef and contains a melodic line with a fermata over the first measure, followed by a series of eighth and sixteenth notes. The bottom staff is in bass clef and contains a bass line with chords and some slurs. Dynamics include *mf* and *dimin.* (diminuendo).

Handwritten musical notation on a single staff. The notes are mostly quarter and eighth notes. A dynamic marking *sempre p^o* is written below the staff.

Handwritten musical notation on a single staff. The notes are mostly quarter and eighth notes. A dynamic marking *sempre p^o* is written below the staff.

Handwritten musical notation on a single staff. The notes are mostly quarter and eighth notes. Dynamic markings *crescen* and *molto cresc* are written below the staff.

Handwritten musical notation on a single staff. The notes are mostly quarter and eighth notes. Dynamic markings *crescen* and *molto cresc* are written below the staff.

Handwritten musical notation on a single staff. The notes are mostly quarter and eighth notes. There are some large slurs and dynamic markings.

Handwritten musical notation on a single staff. The notes are mostly quarter and eighth notes. There are some large slurs and dynamic markings.

sempre ff *poco a poco cresc.*

poco a poco cresc.

cresc.

cresc.

subito cresc.

cresc.

dim.

cresc.

Molto meno mosso ed espansivo

Molto meno mosso

dimin.

dimin.

Al tempo

Al tempo
Capriccio

Handwritten musical score for the first system. It consists of a treble clef staff with a key signature of two sharps (F# and C#) and a common time signature. The music includes various rhythmic patterns, including eighth and sixteenth notes, and rests. There are dynamic markings such as *mf* and *f*. The system ends with a double bar line and a key signature change to two sharps and a common time signature.

Handwritten musical score for the second system. It continues the piece with complex rhythmic figures, including sixteenth and thirty-second notes. Dynamic markings include *mf* and *f*. The system ends with a double bar line.

Handwritten musical score for the third system. It shows further development of the musical themes with intricate rhythmic patterns. Dynamic markings include *mf* and *f*. The system ends with a double bar line.

Handwritten musical score for the fourth system. It concludes the piece with dynamic markings *cresc.* and *cresc. molto*. The system ends with a double bar line.

Handwritten musical score for the first system, featuring a vocal line and two piano accompaniment staves. The vocal line includes notes and rests, with dynamic markings such as *ff* and *pp*. The piano parts consist of chords and melodic fragments, with some notes marked with *pp* and *ff*. There are also some handwritten annotations in parentheses.

Handwritten musical score for the second system, continuing the vocal and piano parts. The vocal line has a *cresc.* marking. The piano accompaniment includes chords and melodic lines, with dynamic markings like *pp* and *ff*. There are also some handwritten annotations in parentheses.

Handwritten musical score for the third system, featuring a vocal line and two piano accompaniment staves. The vocal line includes notes and rests, with dynamic markings such as *pp* and *ff*. The piano parts consist of chords and melodic fragments, with some notes marked with *pp* and *ff*. There are also some handwritten annotations in parentheses.

Handwritten musical score for the fourth system, featuring a vocal line and two piano accompaniment staves. The vocal line includes notes and rests, with dynamic markings such as *pp* and *ff*. The piano parts consist of chords and melodic fragments, with some notes marked with *pp* and *ff*. There are also some handwritten annotations in parentheses.

Handwritten musical notation on a single staff, featuring a sequence of chords and melodic lines with various fingerings and dynamics.

Handwritten musical notation on two staves, showing a complex texture with multiple voices and dynamic markings like 'ff'.

Handwritten musical notation on a single staff, starting with a '6' above the staff and a 'dimin' marking.

Handwritten musical notation on two staves, with 'f' and 'dimin' markings.

Espressivo

Handwritten musical notation on a single staff, with 'dimin' and 'cresc' markings.

Molto espressivo

Handwritten musical notation on two staves, with 'dimin' and 'cresc' markings.

Handwritten musical notation on two staves, featuring a dense texture of chords and dynamic markings like 'dimin' and 'mf'.

allegro con brio

allegro con brio

This page contains a handwritten musical score for piano and violin. The score is organized into several systems, each with a piano part on the left and a violin part on the right. The piano part is written in a grand staff (treble and bass clefs), while the violin part is in a single staff with a treble clef. The music is characterized by dense, rhythmic patterns, including triplets and sixteenth-note runs. Dynamic markings such as *mf* (mezzo-forte) and *f* (forte) are present. The tempo is indicated as *allegro con brio* in two locations. The score concludes with a double bar line and repeat dots.

Handwritten musical notation for the first system, consisting of a treble staff and a bass staff. The treble staff contains a series of rhythmic patterns, including groups of sixteenth notes and slurs. The bass staff contains a melodic line with slurs and rests.

Handwritten musical notation for the second system, consisting of a treble staff and a bass staff. The treble staff features a melodic line with slurs and rests. The bass staff contains rhythmic accompaniment with slurs and rests.

Handwritten musical notation for the third system, consisting of a treble staff and a bass staff. The treble staff features a melodic line with slurs and rests. The bass staff contains rhythmic accompaniment with slurs and rests.

Handwritten musical notation for the fourth system, consisting of a treble staff and a bass staff. The treble staff features a melodic line with slurs and rests. The bass staff contains rhythmic accompaniment with slurs and rests.

12

A page of handwritten musical notation on ten staves. The notation is written in dark ink on aged, yellowish paper. The score consists of ten staves, each containing a series of notes, rests, and other musical symbols. The notes are mostly eighth and sixteenth notes, often grouped with beams. There are several measures with rests. The handwriting is somewhat cursive and shows signs of being a working draft. The paper has some foxing and staining, particularly in the lower half. The overall appearance is that of a historical manuscript page.

Tanzballade

N. 1.

für Violine & Klavier

(Smyrna)

D. 2. Lialia

*Andante
ed appassionato*

Handwritten musical score for the first system. The top staff is a treble clef with a melodic line, featuring slurs and dynamic markings such as *p* and *f*. The bottom two staves are a grand staff (treble and bass clefs) with piano accompaniment, including chords and arpeggiated figures.

Handwritten musical score for the second system. The top staff continues the melodic line with slurs and ties. The piano accompaniment in the grand staff below includes chords and arpeggiated patterns.

Handwritten musical score for the third system. The top staff continues the melodic line. The piano accompaniment in the grand staff includes chords and arpeggiated patterns.

Handwritten musical score for the fourth system. The top staff continues the melodic line. The piano accompaniment in the grand staff includes chords and arpeggiated patterns, ending with a final chord.

allegro 2

lunga *lunga*

dimin. *dimin.* *sempre fo:*

sempre fo: *4^o*

This page of a handwritten musical score, numbered 3, contains six systems of music. The first system consists of a vocal line and a piano accompaniment. The vocal line begins with the dynamic marking "cresc. molto cresc." and features a melodic line with various ornaments and slurs. The piano accompaniment also starts with "cresc. molto cresc." and includes a bass line with a "pp" marking and a treble line with chords and slurs. The second system continues the vocal line with a "p" marking and the piano accompaniment with a "cresc." marking. The third system shows the vocal line with a "cresc." marking and the piano accompaniment with a "pp" marking. The fourth system features a vocal line with a "pp" marking and the piano accompaniment with a "dimin." marking. The fifth system includes a vocal line with a "Coda" marking and a "dimin." marking, and a piano accompaniment with a "pp" marking. The sixth system concludes with a vocal line and a piano accompaniment, both featuring a "pp" marking and a "Coda" marking. The score is written in a cursive hand with various musical notations such as slurs, ornaments, and dynamic markings.

cresc poco

cresc poco

a poco cresc

a poco cresc

Meno mosso molto espressivo

Meno mosso molto espressivo

dimin

dimin

In tempo

Handwritten musical notation for the first system, featuring a treble clef and a single staff with various rhythmic patterns and accidentals.

Adagio

In tempo

Handwritten musical notation for the second system, including a grand staff with treble and bass clefs, showing chordal textures and melodic lines.

Handwritten musical notation for the third system, featuring a treble clef staff with dynamic markings *mf* and *dimin...*.

Handwritten musical notation for the fourth system, including a grand staff with dynamic markings *mf* and *dimin...*.

Handwritten musical notation for the fifth system, featuring a treble clef staff with various rhythmic patterns.

Handwritten musical notation for the sixth system, including a grand staff with complex chordal structures.

Handwritten musical notation for the seventh system, featuring a treble clef staff with dynamic markings *rescres. molto*.

Handwritten musical notation for the eighth system, including a grand staff with dynamic markings *rescres. molto*.

Allegro

Handwritten musical score for the first system, featuring a treble clef staff and a grand staff. The treble staff contains a melodic line with notes and rests, marked with a dynamic of *f* and a *cresc.* instruction. The grand staff below contains piano accompaniment with chords and arpeggiated figures, also marked with *f* and *cresc.*

Adagio

Sostenuto
rit. tempo

Handwritten musical score for the second system. The treble staff begins with a *f* dynamic and a *cresc.* marking, then transitions to a *Sostenuto rit. tempo* section. The grand staff provides accompaniment with complex textures, including triplets and dense chordal structures.

Adagio

Sostenuto
rit. tempo

Handwritten musical score for the third system. The treble staff features a melodic line with dynamics ranging from *f* to *mp*. The grand staff continues the accompaniment with intricate patterns and textures.

Handwritten musical score for the fourth system. The treble staff shows a melodic line with dynamics *mp* and *p*. The grand staff includes piano accompaniment with various textures and a *Ped.* (pedal) marking at the end.

Ped. (C) #

Molto appassionato

7

Handwritten musical score for the first system. The piano part (left) features a series of chords with dynamic markings: *dimin*, *f*, and *mpo crescen*. The violin part (right) has a melodic line with a *mpo crescen* marking. The system concludes with a fermata over a chord.

Handwritten musical score for the second system. The piano part (left) continues with chords and dynamic markings: *dimin*, *f*, and *mpo crescen*. The violin part (right) features a melodic line with a *mpo crescen* marking. The system concludes with a fermata over a chord.

Handwritten musical score for the third system. The piano part (left) continues with chords and dynamic markings: *dimin*, *f*, and *mpo crescen*. The violin part (right) features a melodic line with a *mpo crescen* marking. The system concludes with a fermata over a chord.

Two empty musical staves at the bottom of the page, consisting of five-line systems.