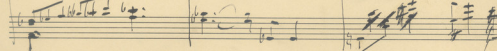
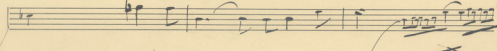
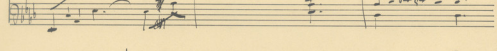
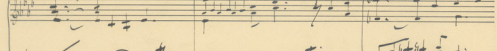
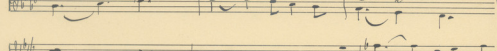
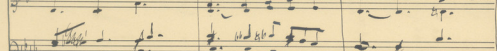
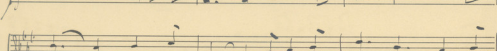
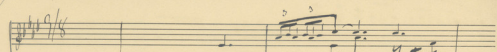
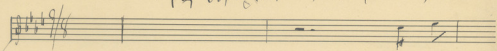


Τα Μαγιά της Νεότητος



Handwritten musical score on aged paper, featuring multiple systems of staves with notes, rests, and dynamic markings. The score is written in a style characteristic of 19th-century manuscript notation.

Key features include:

- Staff 1:** Melody line with notes and rests. Above the staff, the words "Mel" and "12' 176' - 188" are written.
- Staff 2:** Accompanying line with chords and rhythmic patterns.
- Staff 3:** Melody line with notes and rests. Above the staff, the words "114' 117' 188' 191' 193' 195'" are written.
- Staff 4:** Accompanying line with chords and rhythmic patterns.
- Staff 5:** Melody line with notes and rests.
- Staff 6:** Accompanying line with chords and rhythmic patterns.
- Staff 7:** Melody line with notes and rests. Above the staff, the words "4/8" and "5" are written.
- Staff 8:** Accompanying line with chords and rhythmic patterns.

The notation includes various note values, rests, and dynamic markings such as *mf* and *f*. The paper shows signs of age, including yellowing and some staining.

Handwritten musical score on aged paper, consisting of ten systems of staves. The notation includes various rhythmic values, accidentals, and dynamic markings.

The score is organized into ten systems, each with two staves:

- System 1:** Features a treble clef and a key signature of one sharp (F#). A measure rest is marked with the number "7".
- System 2:** Continues the melodic and harmonic development.
- System 3:** Shows a change in time signature to 3/4.
- System 4:** Includes a dynamic marking of *pp* (pianissimo) and a change in time signature to 2/4.
- System 5:** Continues the piece with various rhythmic patterns.
- System 6:** Features a treble clef and a key signature of one sharp (F#).
- System 7:** Includes a dynamic marking of *pp* and a change in time signature to 6/8.
- System 8:** Continues the melodic line.
- System 9:** Continues the piece.
- System 10:** Continues the piece.

The notation includes various rhythmic values, accidentals, and dynamic markings such as *pp* (pianissimo).

M.M.M.S.

~~Tralala in A~~  
griechische  
für A