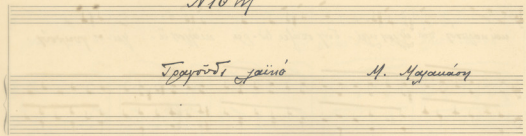
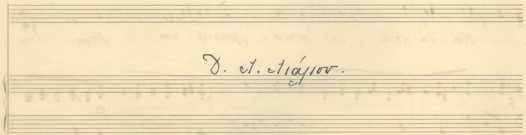


*Nio'm*

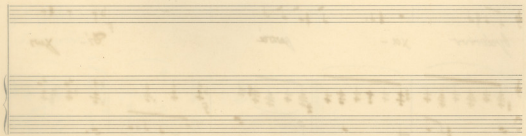


*Γραφῆς γαιῆς*

*M. Μαγανῆς*



*Δ. Α. Νιάγιου.*



*Andantino*

Μετὰ τὴν ἑορτὴν τοῦ ἁγίου ἁγίου - ἁγίου

καὶ ἡμεῖς οὖν ἄξιον ἔσται ὑμῶν ἡμεῖς ἄξιον ἔσται ὑμῶν

Ναὶ ἐκείνη ἡ ἡμέρα - ἡμέρα - ἡμέρα - ἡμέρα

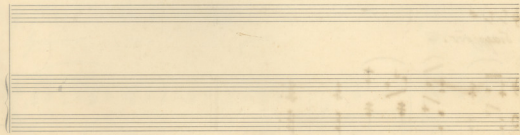
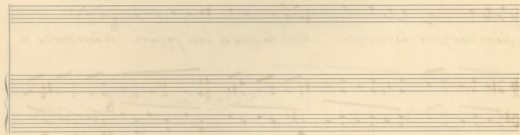
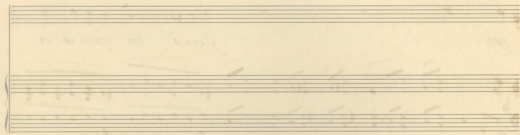
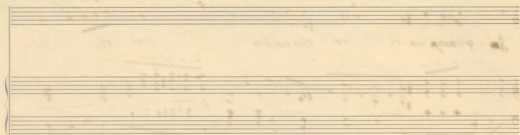
ἡμεῖς ἁ - ἁ ἡμεῖς ἁ - ἁ

Ἰη-σὺν χριστὸν ἡ-γά-ρι-τε - να ἰ-σχυράτα  
 και ἰ-σὺν πα-

τία.  
 Ἰ-η-σὺς ἔ-σ-τω ἀ-ρ-χὴ καὶ ἡ-γε-

*Poco meno*  
 ἡ-σὺν πάντων ἀ-σώ-των  
*cresc* ὄ-ντων ἰ-σχυράτα ἰ-σὺν πάντων ἡ-σὺν πάντων ἀ-

ἰ-σχυρότερη. -



~~Νότα~~

~~Τραγούδι γαϊάρι~~

~~Α. Μοραΐου~~

~~Δ. Α. Στάγιου.~~

*Andantino*

Με' λ'ι' υή - ποτ' ὀσπ'ι' ὑπότ'α οὐραπ'ι'ατ' - τ'α

καὶ καρπ'ὸν ἄν' ὀφ'θ'υμ'ι' - τ'ου σπ'ῆρ'ος ἕρ'α ἡδ'υμ'ῶ - σ'α - σε γ'λυκ'ῶν

Ναὶ τὰ ρεῖα - τα ἄγ'ρα - τ'α - οὐρ - ρα Μῆσα - ρο -

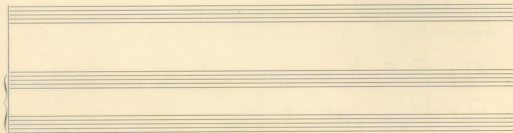
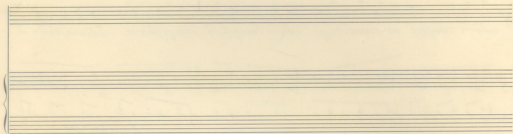
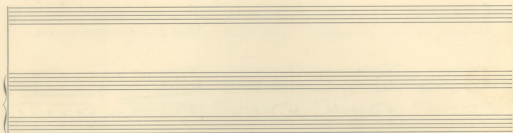
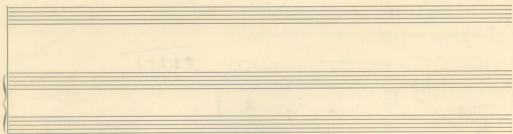
βραϊν'ατ' καὶ - π'οσι' θ'ι - γ'ωτ'

Ζαί-γνησιμα-ρε-ρα στήναρτά 3 και στί θω-

ρία. 3 τον ε-λοσ γλιου ναίε

μέσση πόρην αι σιασών 3 θών δαυρη οι νεοχη-ρα-ε 3 υδωνωντων αι

Στασσην.





~~Νιότη~~

~~Γαϊνό τραγούδι~~

~~Μ. Μαζαράκη~~

~~Θ. Α. Παύλου~~

Musical notation for the first staff, including a treble clef, a key signature of one flat, and a 4/4 time signature. The staff contains a melodic line with several measures of music.

*Andantino*

Μετ' ἄνθη-σιν ἄνθη ἄνθη-σιν ἄνθη-σιν ἄνθη-σιν

Piano accompaniment for the first system, featuring a grand staff with treble and bass clefs. The music consists of chords and moving lines in both hands.

Musical notation for the second staff, continuing the melody from the first system.

καὶ ἀνθη-σιν ἄνθη ἄνθη-σιν ἄνθη-σιν ἄνθη-σιν ἄνθη-σιν

Piano accompaniment for the second system, showing the harmonic support for the vocal line.

Musical notation for the third staff, continuing the melody.

Ναὶ τὰ νεῦ-τα ἄνθη-σιν ἄνθη-σιν ἄνθη-σιν

Piano accompaniment for the third system, including some dynamic markings like *mf*.

Musical notation for the fourth staff, continuing the melody.

ὄρνιθες καὶ ἄνθη ἄνθη

Piano accompaniment for the fourth system, concluding the piece with a final chord.

3  
 Ζα-γραμμενι-να σ'η καρδια και σ'η ζω-

ηδ.  
 Του ε-λεησου ναυε

*Poco meno*  
 υμων δελογοι αι σωτων ουν δελογοι οι νεοτε-ρι υμων διδου α-

*Poco meno*  
*creu*  
*diminu*

σραπονη.

