

Manolis Ekmektsoglou

***Tonally, texturally, abruptly***

for piano solo

August / September 2022

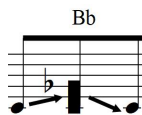
## PERFORMANCE NOTES



Release soft pedal abruptly so to create loud noise.  
The soft pedal should have been pressed as softly as possible so not to make any prior noise.



Chromatic cluster



Moving cluster. Throughout this passages execute transmissions between the base and the cluster using the palm(s) of your hand. The base (single note) and the upper edge of the cluster should not be articulated substantially. A blurry, sound mass-like texture should be created. The gradual thickening effect on sound should be heard.

Damper should be depressed throughout the work

**Duration: 1'**

# Tonally, texturally, abruptly

for piano solo

Manolis Ekmektoglou  
(\*1986)

$\text{♩} = 90$  *rall.*  $\text{♩} = 40$   $\text{♩} = 90$  *rall.*  $\text{♩} = 40$

*(sfff)* Chromatic cluster A0-C1 L.V. *(sfff)* L.V.

*mf* *pp* *mf* *pp*

5 ( $\text{♩} = 40$ )

*sempre con il palmo de la mano*

*sim.* *artic. sim.* *pp*

7

*sff*

9  $\text{♩} = 90$  *rall.*  $\text{♩} = 40$

Chromatic cluster A0-C1 A1-C2 A2-C3 A3-C4 A4-C5 A5-C6 A6-C7 A7-C8 L.V. *pp* *pp*

12

L.V. *mf* L.V. *pp* L.V. *pp* L.V. *pp*