

G

Handwritten musical score for guitar, consisting of 12 systems of two staves each (treble and bass clef). The score is written in a single system with a 2/4 time signature and a key signature of one sharp (F#). The notation includes chords, arpeggios, and melodic lines. Measure numbers 4 through 29 are indicated throughout the piece. The score concludes with a double bar line and repeat dots at the end of the final system.

4 5 6 8
9 10 11 12
13 15 16
17 18 19 20 21
22 23 24 25
26 27 28 29

Handwritten musical score on a single page, featuring ten systems of music. Each system consists of a vocal line (treble clef) and a piano accompaniment (grand staff). The score is numbered with measure numbers 30 through 59. The music is written in a style characteristic of early 20th-century manuscript notation, with various clefs, time signatures, and dynamic markings.

Measure numbers: 30, 31, 32, 33, 34, 35, 36, 37, 38, 39, 40, 41, 42, 43, 44, 45, 46, 47, 48, 49, 50, 51, 52, 53, 54, 55, 56, 57, 58, 59.

Dynamic markings and performance instructions:

- glacé* (measures 44-45)
- Viol.* (measures 47-48)
- pp Viol.* (measures 53-54)

The score includes various musical notations such as notes, rests, slurs, and ties, along with some handwritten annotations and corrections.

60 61 62 63

64 65 66 67

68 69 70 71

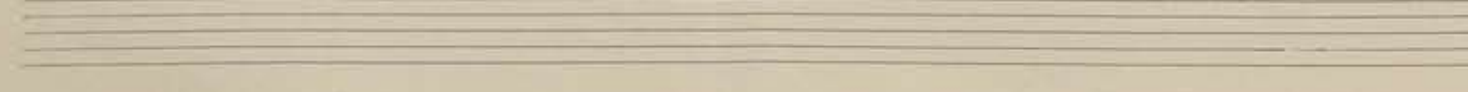
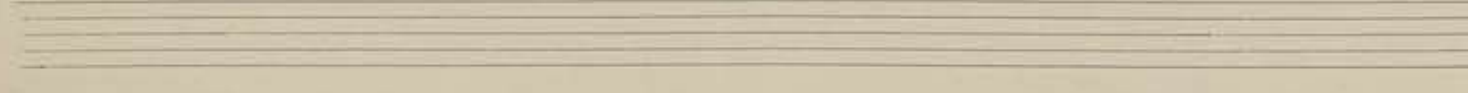
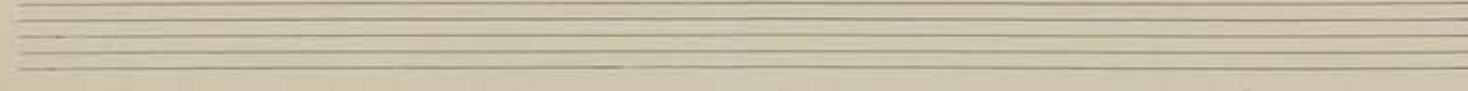
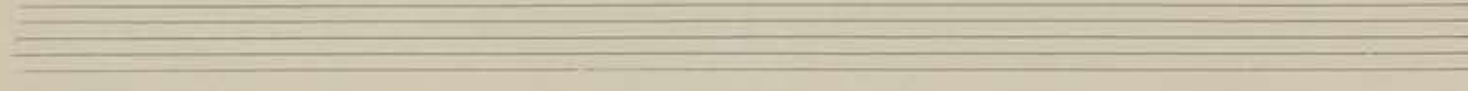
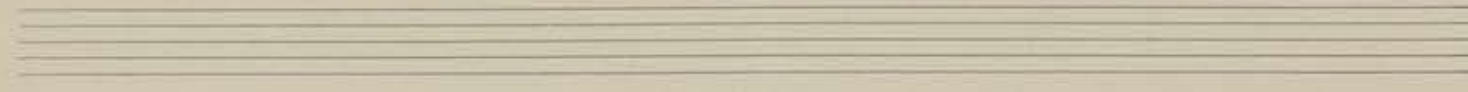
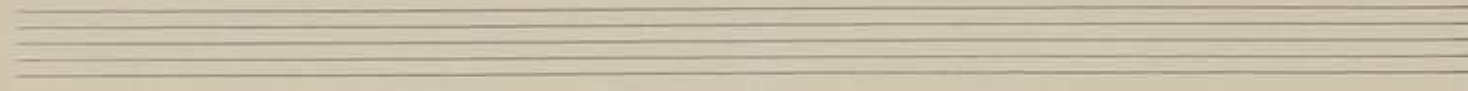
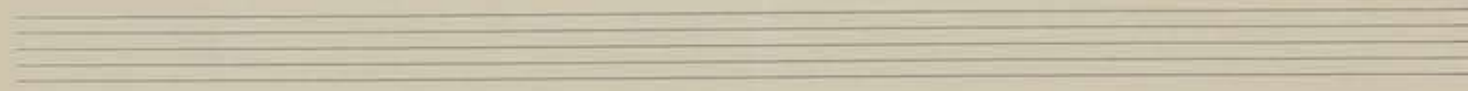
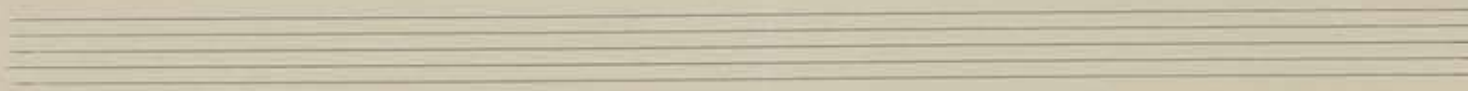
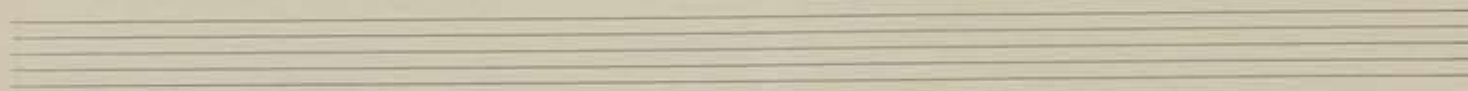
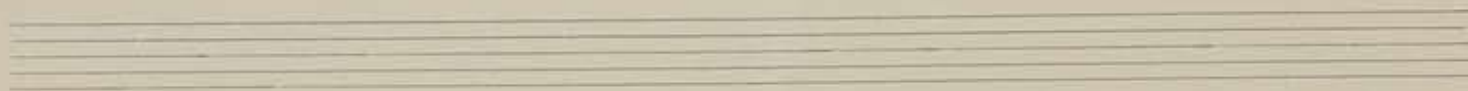
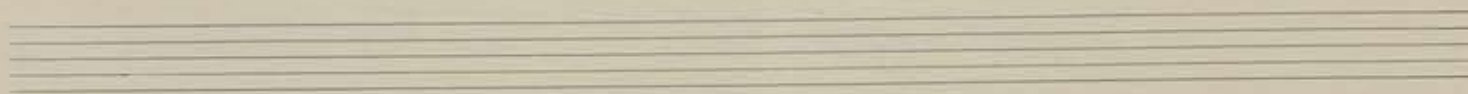
72 73 74 75

76 77 78 79 80

81 82 83 84 85 86

87 88 89 90 91

Handwritten musical notation on a grand staff. The notation includes a treble clef, a key signature of one sharp (F#), and a 2/4 time signature. The melody consists of four notes: a quarter note on G4, a quarter note on A4, a quarter note on B4, and a quarter note on C5. The bass staff is empty.



3. Thema

Handwritten musical notation for measures 1-6. The notation includes a treble clef, a key signature of one sharp (F#), and a 3/4 time signature. The notes are mostly quarter and eighth notes, with some beamed eighth notes. Measure numbers 1 through 6 are written above the staff.

Handwritten musical notation for measures 7-13. The notation continues with similar rhythmic patterns. Measure numbers 7 through 13 are written above the staff.

Handwritten musical notation for measures 14-18. The notation includes some complex chordal structures. Measure numbers 14 through 18 are written above the staff.

Allegro

Handwritten musical notation for measures 19-22. Measure 20 contains a large, dark scribble. Measure numbers 19 through 22 are written above the staff.

Handwritten musical notation for measures 23-27. The notation shows a continuation of the melodic line. Measure numbers 23 through 27 are written above the staff.

Handwritten musical notation for measures 28-33. Measure 32-33 is enclosed in a box. Measure numbers 28 through 33 are written above the staff.

Handwritten musical notation for measures 34-35. The notation concludes with a double bar line. Measure numbers 34 and 35 are written above the staff.

36 37 38 39 40 41 42 43

52 53 54 55 56 57 58

67 68 69 70 71 72 73 74

75 76 77 78 79 80 81 82

83 84 85 86 87