

F

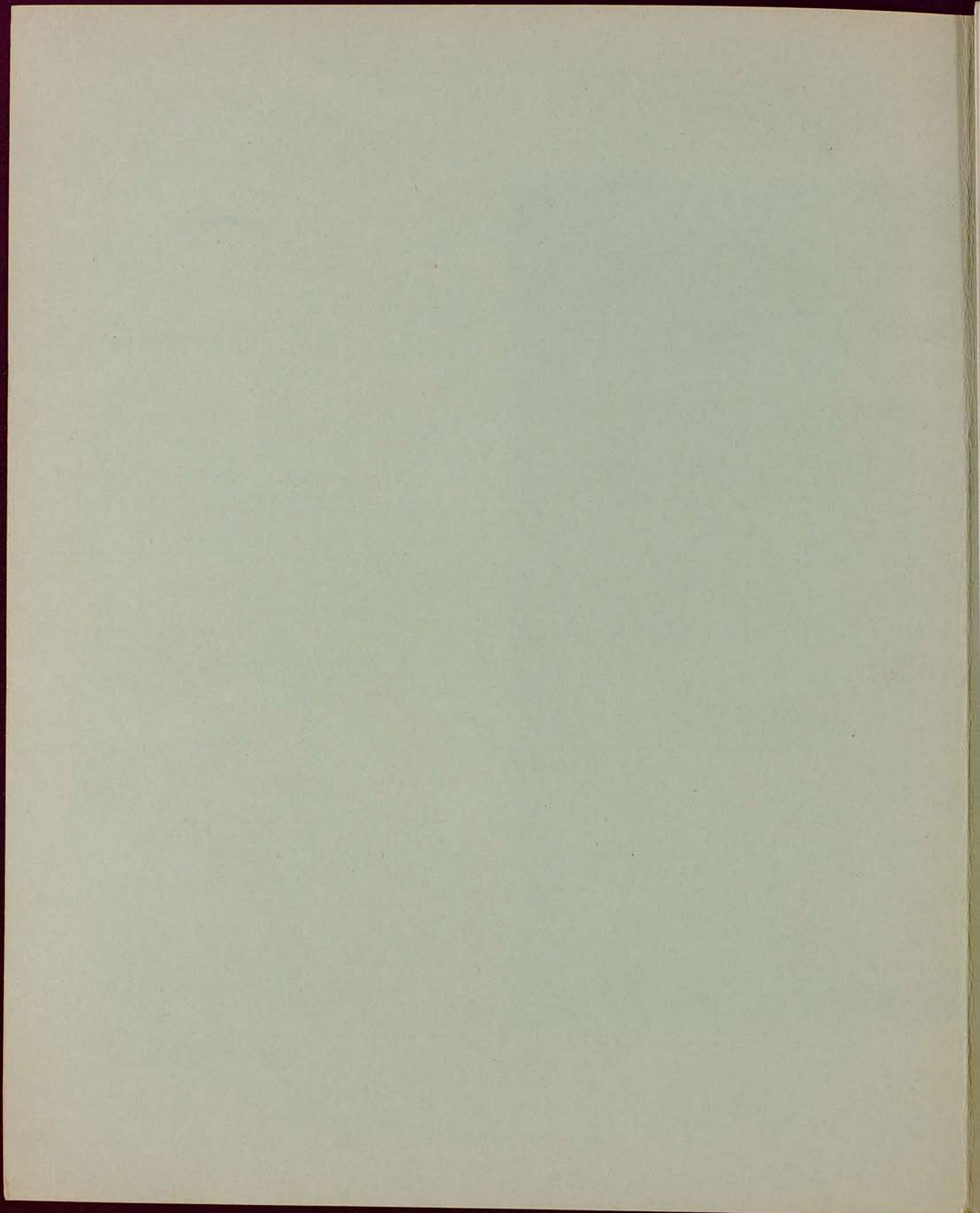
ΝΙΚΟΛΑΟΣ ΣΚΑΛΚΟΤΑΣ

N. SKALKOTAS

BALLET

β5

Partition - 2 -



1

BALLET

II TRATTA

Moderato quasi Andante

A. Braunstein

piccolo
Fl.
ob.
clarinet

Coro
Violini
Violoncelli

Partiti

Moderato quasi Andante

Violini
Violoncelli

Handwritten musical score system 1. It consists of three staves. The top two staves contain dense, repetitive rhythmic patterns with vertical lines and stems. The bottom staff contains a more melodic line with notes and stems. A red bracket on the right side groups the top two staves.

Handwritten musical score system 2. It consists of three staves. The top two staves have melodic lines with notes and stems. The bottom staff has a rhythmic line with notes and stems. A blue horizontal line is drawn across the top two staves. The word "pianissimo" is written in blue ink on the right side.

Handwritten musical score system 3. It consists of three staves. The top two staves are mostly empty with diagonal slashes. The bottom staff contains a rhythmic line with notes and stems. A circled number "20" is written in the center. The word "Tutti" is written in red ink on the right side. The number "25" is written below the staff.

Handwritten musical score system 4. It consists of three staves. The top two staves have melodic lines with notes and stems. The bottom staff has a rhythmic line with notes and stems. A blue horizontal line is drawn across the top two staves. The word "piano" is written in blue ink on the right side.

Five empty musical staves at the bottom of the page.

Poco meno sostenuto → *Poco mosso*

Handwritten musical score for the first system, featuring four staves with complex rhythmic patterns and dynamic markings like 'P' and 'tenu'.

Handwritten musical score for the second system, consisting of three staves with rhythmic notation.

30 ↑ *tutti* 35 40

Handwritten musical score for the third system, showing a transition with a circled '30', a 'tutti' marking, and a circled '40'.

Poco meno sostenuto → *Poco Mosso*

Handwritten musical score for the fourth system, featuring four staves with dynamic markings like 'cresc' and 'f'.

Five empty musical staves at the bottom of the page.

Handwritten musical score for the first system, featuring a vocal line and piano accompaniment. The score includes notes, rests, and dynamic markings such as *pp* and *p*. There are blue horizontal lines drawn across the staves, and some notes are crossed out with blue ink. The word *rit.* is written above the first measure.

Handwritten musical score for the second system, continuing the vocal and piano parts. It features similar notation to the first system, with notes, rests, and dynamic markings. Vertical red lines are drawn under some notes in the piano part.

Handwritten musical score for the third system, which appears to be a piano solo section. It includes a circled number **50** and the word *rit.* above the first measure. The notation consists of notes on a grand staff with some rests.

Handwritten musical score for the fourth system, featuring a vocal line and piano accompaniment. The score is heavily annotated with blue ink, including horizontal lines across the staves and various markings. The word *espress.* is written above the piano part, and *alt.* is written above the vocal line. There are also some red markings and a red line drawn across the piano part.

Five empty musical staves at the bottom of the page, providing space for further notation.

Handwritten musical score for the first system, featuring multiple staves with notes and rests. Includes a blue double bar line and a red 'ob.' marking.

Handwritten musical score for the second system, featuring multiple staves with notes and rests. Includes a blue double bar line and a red 'Tb' marking.

Handwritten musical score for the third system, featuring multiple staves with notes and rests. Includes a blue double bar line, a circled '60', and a red 'g.c.' marking.

Handwritten musical score for the fourth system, featuring multiple staves with notes and rests. Includes a blue double bar line and a red 'mf' marking.

Empty musical staves at the bottom of the page.

molto cantabile

Handwritten musical score for the first system, consisting of four staves. The notation is dense with many notes and rests. There are several blue ink corrections, including a horizontal line drawn through the second and third staves in the latter half of the system.

Handwritten musical score for the second system, consisting of four staves. The notation is dense with many notes and rests. There are several blue ink corrections, including a horizontal line drawn through the second and third staves in the latter half of the system.

70

25

Handwritten musical score for the third system, consisting of two staves. The notation is dense with many notes and rests. There are several blue ink corrections, including a horizontal line drawn through the second staff in the latter half of the system.

Handwritten musical score for the fourth system, consisting of four staves. The notation is dense with many notes and rests. There are several blue ink corrections, including a horizontal line drawn through the second and third staves in the latter half of the system.

A series of empty musical staves at the bottom of the page, consisting of ten blank staves.

Handwritten musical score system 1. It consists of four staves. The top two staves contain treble clef notation with notes and rests. The bottom two staves contain bass clef notation with notes and rests. There are blue double bar lines at the beginning and end of the system. Handwritten annotations include "mf" in blue ink, "ob." in red ink, and "cl." in blue ink. The word "divis" is written in blue ink above the second staff. A blue horizontal line is drawn across the bottom two staves on the right side.

Handwritten musical score system 2. It consists of four staves. The top two staves contain treble clef notation with notes and rests. The bottom two staves contain bass clef notation with notes and rests. There are blue double bar lines at the beginning and end of the system. The dynamic marking "pp" is written in blue ink on the second staff.

80

Handwritten musical score system 3. It consists of four staves. The top two staves contain treble clef notation with notes and rests. The bottom two staves contain bass clef notation with notes and rests. There are blue double bar lines at the beginning and end of the system. The word "rinf." is written in blue ink on the first staff.

Handwritten musical score system 4. It consists of four staves. The top two staves contain treble clef notation with notes and rests. The bottom two staves contain bass clef notation with notes and rests. There are blue double bar lines at the beginning and end of the system. Handwritten annotations include "mf" in blue ink, "div." in blue ink, and "pp" in blue ink. The word "divis" is written in blue ink above the second staff. A blue horizontal line is drawn across the top two staves on the right side.

Handwritten musical notation on a five-line staff. The notation includes notes, rests, and dynamic markings such as **pp**. There are some scribbles and corrections in the first few measures.

Handwritten musical notation on a five-line staff, similar to the first block, with notes and dynamic markings such as **pp**.

25

Handwritten musical notation on a five-line staff, featuring more complex notation and dynamic markings such as **pp**. The notation includes notes, rests, and some additional markings.

A series of empty five-line musical staves, likely intended for further notation.

2

NYKTEPINO

Ballet

A. S. Gajdar

Andante moderato - calmo e spiccato

Flute (Fl.)

Oboe (ob.)

Clarinet in B-flat (Clarin. Sib)

Andante moderato - calmo e spiccato

Corn in F (Corni in Fa)

Trumpet in C (Trombe in C)

Drum (Percussion)

5

Violin I (Vcl. I)

Violin II (Vcl. II)

Andante moderato - calmo e spiccato

Violin I (Vcl. I)

Violin II (Vcl. II)

Viola (Vcl. III)

Cello (Cello)

Kbass (Kbass)

Handwritten musical score for the first system. It features a treble clef staff with a melodic line and a bass clef staff with a rhythmic accompaniment. The music is marked with a **P** (piano) dynamic. A red bracket labeled **Fl.** spans across the top of the system. There are various dynamic markings including **mf** and **pp** scattered throughout the piece.

Handwritten musical score for the second system. It consists of a treble clef staff with a melodic line and a bass clef staff with a rhythmic accompaniment. The music is marked with a **P** (piano) dynamic. There are dynamic markings of **mf** and **mp** in the upper staff, and **p** in the lower staff.

10

15

Handwritten musical score for the third system. It features a treble clef staff with a melodic line and a bass clef staff with a rhythmic accompaniment. The music is marked with a **f** (forte) dynamic. A red arrow points to the word **Tim** (Timpani). The system concludes with the instruction **muta in Si-mi**.

Handwritten musical score for the fourth system. It features a treble clef staff with a melodic line and a bass clef staff with a rhythmic accompaniment. The music is marked with a **P** (piano) dynamic. There are dynamic markings of **mf** and **p** in the upper staff, and **mf** and **p** in the lower staff.

5:6

Handwritten musical notation for the first system. It features a treble clef, a key signature of one sharp (F#), and a 5/6 time signature. The notation includes a melodic line with a blue horizontal line, a piano part with a red 'FR' marking and a blue 'fp' marking, and a bass line with a blue 'p' marking. A red arrow points to a specific measure.

Handwritten musical notation for the second system. It features a treble clef, a key signature of one sharp (F#), and a 5/6 time signature. The notation includes a melodic line with a blue horizontal line, a piano part with a red 'Tr' marking and a blue 'p' marking, and a bass line with a blue 'p' marking. A red 'C.' marking is also present.

20

25

A system of empty musical staves with a treble clef and a key signature of one sharp (F#).

Handwritten musical notation for the third system. It features a treble clef, a key signature of one sharp (F#), and a 5/6 time signature. The notation includes a melodic line with a blue horizontal line, a piano part with a blue 'fp' marking, and a bass line with a blue 'p' marking. A red 'C.' marking is also present.

Handwritten musical score for the first system. It features a grand staff with two staves. The upper staff contains notes with a red 'f' dynamic marking. The lower staff contains a complex melodic line with various accidentals and a red 'c' marking. A blue arrow points from the end of the first system to the beginning of the second.

Handwritten musical score for the second system. It continues the melodic line from the first system. A blue arrow points from the end of the second system to the beginning of the third.

30

Handwritten musical score for the third system. The upper staff has a red 'Tim.' marking and a series of vertical lines. A blue arrow points from the end of this system to the beginning of the fourth. The text 'muta in Sol' is written on the right side.

Handwritten musical score for the fourth system. It features a grand staff with two staves. The upper staff contains notes with a red 'v.' marking and a blue 'mf' dynamic marking. The lower staff contains a complex melodic line with various accidentals. A blue arrow points from the end of the fourth system to the beginning of the fifth.

5.6

Handwritten musical score for the first system, featuring woodwinds and strings. The notation includes notes, rests, and dynamic markings such as *p*, *mf*, and *f*. Specific instrument parts are labeled in red ink: *Fl.*, *ob.*, and *cl.*. A blue *rit.* marking is present at the top, and a red *mf* marking is at the bottom right.

Handwritten musical score for the second system, primarily consisting of string parts. It features a melodic line with notes and rests, accompanied by a bass line. A blue *p* marking is on the left, and a blue *mf* marking is in the center.

35

40

Handwritten musical score for the third system, showing a woodwind part with a *Tim* (timpani) marking. A blue *calmo* marking is written below the staff. The text "muta in Re" is written in the center of the system.

Handwritten musical score for the fourth system, featuring woodwinds and strings. It includes a blue *p* marking on the left, a blue *mf* marking in the center, and a red *rit.* marking on the right. The notation is dense with notes and rests.

Handwritten musical score for the first system, featuring vocal lines and piano accompaniment. The score includes lyrics such as "tu tu", "tu tu", and "tu tu". Dynamic markings include *mf* and *p*. A red vertical line is drawn through the score at the end of the system.

calmando

Handwritten musical score for the second system, primarily consisting of piano accompaniment. It features dynamic markings *p* and *mf*, and includes a red *Tor* marking. The system concludes with a red *P* marking and a red *TR.* marking.

45

50

Handwritten musical score for the third system, consisting of piano accompaniment with rhythmic patterns and rests.

calmando

Handwritten musical score for the fourth system, featuring vocal lines and piano accompaniment. It includes dynamic markings *mf* and *p*, and a red *alt.* marking. The system concludes with a red *P* marking.

Five empty musical staves at the bottom of the page.

rit. **pp**

Sib

pprit... Tempo

mf

rit. Tempo

p

55

rit. **Tim**

60

Tempo

rit. **pp**

mf

act.

Sib

Handwritten musical score for the first system. The piano part (bottom staff) has dynamic markings *f* and *mf*. The woodwind part (top staff) has *ob. rit.* and *cl. rit.* markings. A red box labeled "FR" is present in the piano part, and a blue box labeled "PP" is in the woodwind part. There are also some scribbles and arrows.

Handwritten musical score for the second system. The piano part (bottom staff) has dynamic markings *mf* and *p*. The woodwind part (top staff) has a *rit.* marking. There are some scribbles and a blue line in the woodwind part.

65

20

Handwritten musical score for the third system. The piano part (bottom staff) has dynamic markings *mf* and *p*. The woodwind part (top staff) has a *rit.* marking. There are various annotations, including a blue box labeled "PP", a red box, and several scribbles and arrows.

