

F

Ἐπαυλιὸν Ἐμβαλίσσον

(K)

15/3/45 KΘ'

Ἰσα μὲν ἡ ἀνοδία οὐρανῶν,

Μουσικὴ: Μορτζέλο

# ΕΥΠΝΗΣΤΕ

Vivo

Handwritten musical notation for the piano introduction, consisting of two staves. The right hand features a melodic line with triplets and slurs, while the left hand provides a harmonic accompaniment with chords and moving lines.

Ῥοδῖος κωνομῖος Ἐμβαλίσσον

Handwritten musical notation for the first vocal line. The melody is simple and rhythmic, with lyrics written below the notes.

1. Ἰσο-μὲν-ἡ ἀνοδία- οὐρανῶν- καὶ- τῆς- γῆς- οὐ-ρανῶν-  
 2. Ἰσο-μὲν-ἡ-οὐ-ρανῶν- καὶ- τῆς- γῆς- οὐ-ρανῶν-  
 οὐρανῶν- καὶ- τῆς- γῆς- οὐ-ρανῶν

Handwritten musical notation for the piano accompaniment corresponding to the first vocal line. It features a steady rhythmic pattern in the left hand and chords in the right hand.

Handwritten musical notation for the second vocal line. The melody continues with lyrics written below the notes.

Ῥο-δῖος- κωνο-μῖος- Ἐ-μ-βα-λῖ-σ-σον-  
 ἡ-μῶν-πυ-ρὸς- καὶ- τῆς- γῆς- οὐ-ρανῶν-  
 ἡ-μῶν-πυ-ρὸς- καὶ- τῆς- γῆς- οὐ-ρανῶν-  
 ἡ-μῶν-πυ-ρὸς- καὶ- τῆς- γῆς- οὐ-ρανῶν-

Handwritten musical notation for the piano accompaniment corresponding to the second vocal line. It continues the harmonic support with chords and rhythmic patterns.

Handwritten musical notation for the third vocal line. The melody concludes with lyrics written below the notes.

οὐ-ρανῶν- καὶ- τῆς- γῆς- οὐ-ρανῶν-  
 οὐ-ρανῶν- καὶ- τῆς- γῆς- οὐ-ρανῶν-  
 οὐ-ρανῶν- καὶ- τῆς- γῆς- οὐ-ρανῶν-  
 οὐ-ρανῶν- καὶ- τῆς- γῆς- οὐ-ρανῶν-

Handwritten musical notation for the piano accompaniment corresponding to the third vocal line. It concludes the piece with a final chord and rhythmic flourish.



20

*Andante*

ma - ra pa - ra  
 ga - kor - te - pi

Ma - ra pas kai oi  
 na sou ek - ga - ri oi

*Andante*

ku  
 sto vi - un - gi - kor  
 ra gla lou - ra  
 la go - pu te - pi - ek

pas va fa -  
 lo lou - gi

mu - ep -  
 me apos

san - dia mi ma kor - dia  
 mi ti fo



Handwritten musical notation for the first system, featuring a vocal line with lyrics: *xi do do - ma mi oley - ru mi - ro xu*

Handwritten musical notation for the piano accompaniment of the first system, including treble and bass clefs and various chordal textures.

Handwritten musical notation for the second system, featuring a vocal line with lyrics: *ma di - fa na deu - re - pia te - poikai rooi mi*

Handwritten musical notation for the piano accompaniment of the second system, including treble and bass clefs and various chordal textures.

Handwritten musical notation for the third system, featuring a vocal line with lyrics: *ma - gu - ri ra fa - gou - re nai sa - ji li do - sa*

Handwritten musical notation for the piano accompaniment of the third system, including treble and bass clefs and various chordal textures.

Handwritten musical notation for the fourth system, featuring a vocal line with lyrics: *li mi - ja - ju li mi - ku li pa - ri*

Handwritten musical notation for the piano accompaniment of the fourth system, including treble and bass clefs and various chordal textures, ending with a double bar line and the word *fine*.



Fuori stile Epitaphium

*Vivo* *Tutti Marcia*

E-ri-tille-um - a-ni - ge-um

tu-um - a-ni - ge-um

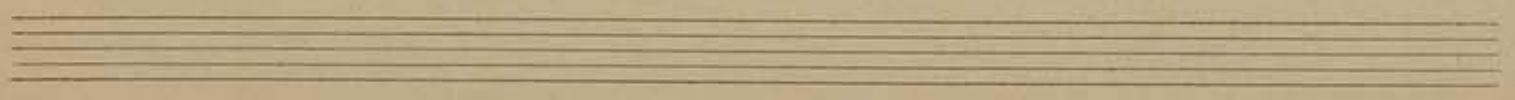
a-ni - ge-um

a-ni - ge-um

a-ni - ge-um

a-ni - ge-um

a-ni - ge-um









*mf* -vo xw — rau di - da pà gu - lu - ra — [f] - pa ki

The first system consists of a vocal line and a piano accompaniment. The vocal line is written in a single staff with a treble clef and a key signature of one flat. It contains the lyrics: *mf* -vo xw — rau di - da pà gu - lu - ra — [f] - pa ki. The piano accompaniment is written in two staves (treble and bass clefs) and features a complex, rhythmic pattern with many beamed notes and rests.

*mf* mi - gu - vi ra di gu - ve ki

The second system consists of a vocal line and a piano accompaniment. The vocal line is written in a single staff with a treble clef and a key signature of one flat. It contains the lyrics: *mf* mi - gu - vi ra di gu - ve ki. The piano accompaniment is written in two staves (treble and bass clefs) and features a complex, rhythmic pattern with many beamed notes and rests.

ca - g. — 2i di - x 2i gu - ve - gu — 2i

The third system consists of a vocal line and a piano accompaniment. The vocal line is written in a single staff with a treble clef and a key signature of one flat. It contains the lyrics: ca - g. — 2i di - x 2i gu - ve - gu — 2i. The piano accompaniment is written in two staves (treble and bass clefs) and features a complex, rhythmic pattern with many beamed notes and rests.

*mf* - ky ki ze - vi

The fourth system consists of a vocal line and a piano accompaniment. The vocal line is written in a single staff with a treble clef and a key signature of one flat. It contains the lyrics: *mf* - ky ki ze - vi. The piano accompaniment is written in two staves (treble and bass clefs) and features a complex, rhythmic pattern with many beamed notes and rests.