

R. Wagner

Chorus

Allegretto

Air

Handwritten musical score, first system. It consists of three staves. The top two staves are in treble clef, and the bottom staff is in bass clef. The music features complex rhythmic patterns and melodic lines. A handwritten annotation "Espl." is visible in the middle of the second staff.

Handwritten musical score, second system. It consists of a single staff in treble clef. The music continues with complex rhythmic patterns and melodic lines.

Handwritten musical score, third system. It consists of two staves. The top staff is in treble clef and the bottom staff is in bass clef. A handwritten annotation "p dolce" is visible in the middle of the top staff. The music features complex rhythmic patterns and melodic lines.

Handwritten musical score, fourth system. It consists of a single staff in treble clef. The music continues with complex rhythmic patterns and melodic lines.

Handwritten musical score, fifth system. It consists of two staves. The top staff is in treble clef and the bottom staff is in bass clef. A handwritten annotation "cresc." is visible in the middle of the top staff. The music features complex rhythmic patterns and melodic lines.

Handwritten musical score, sixth system. It consists of a single staff in treble clef. The music continues with complex rhythmic patterns and melodic lines.

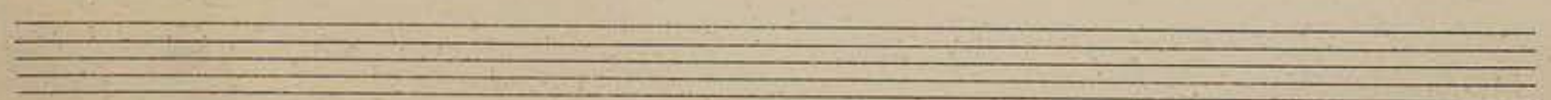
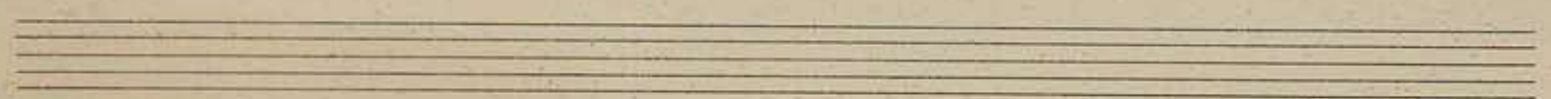
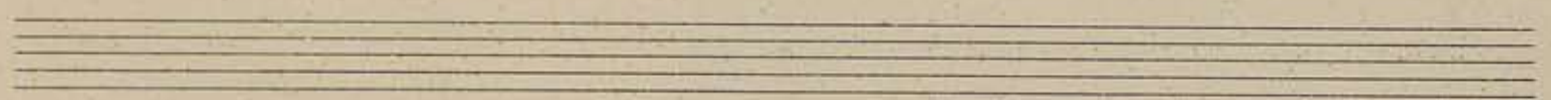
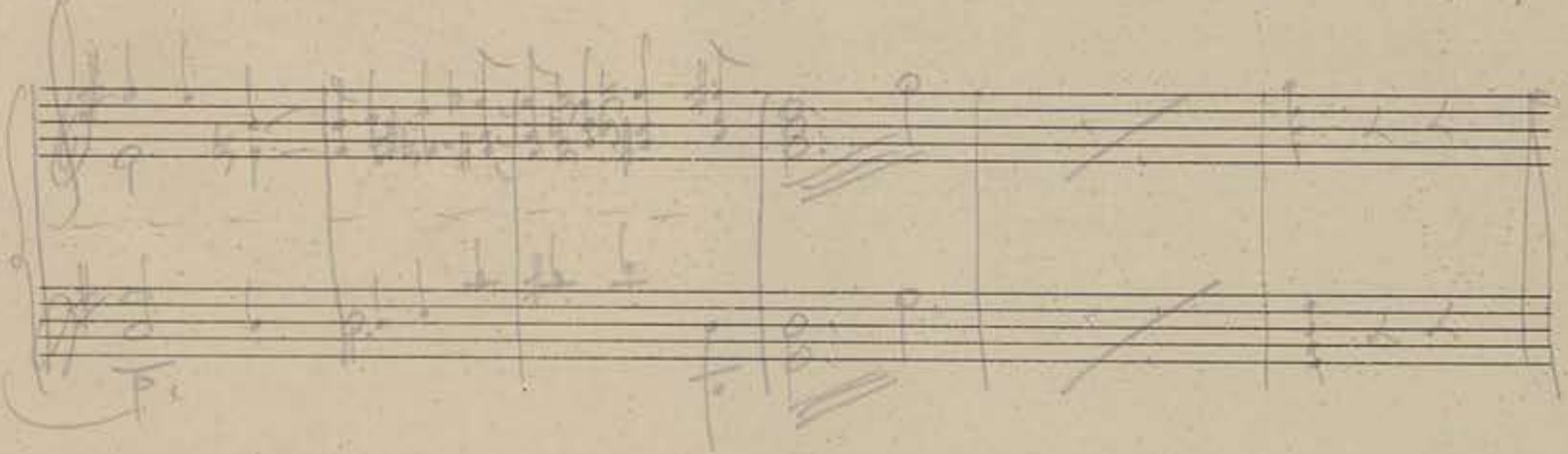
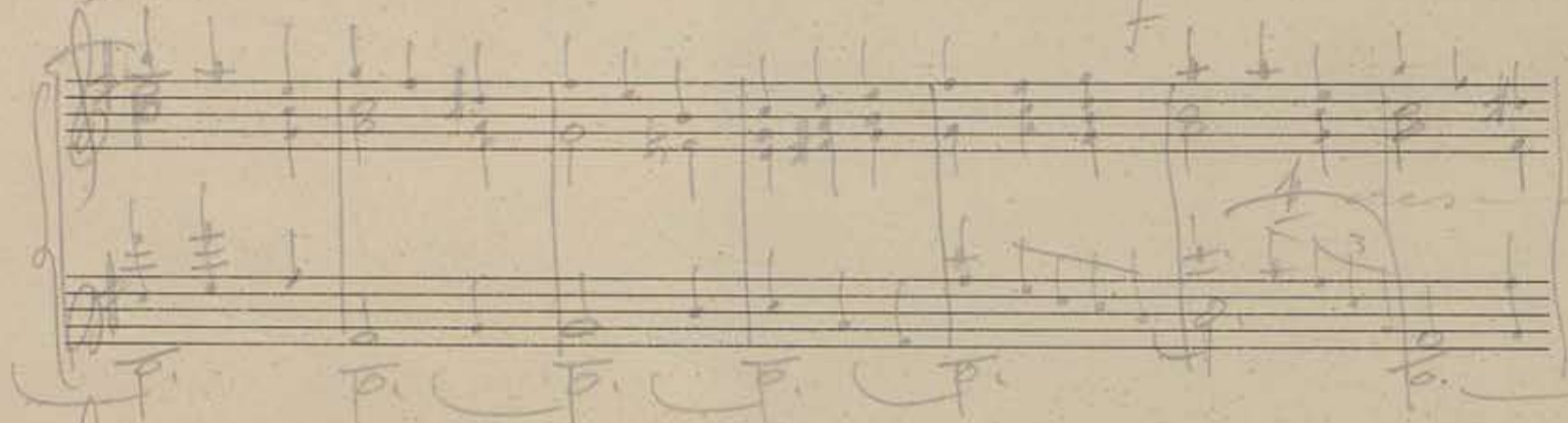
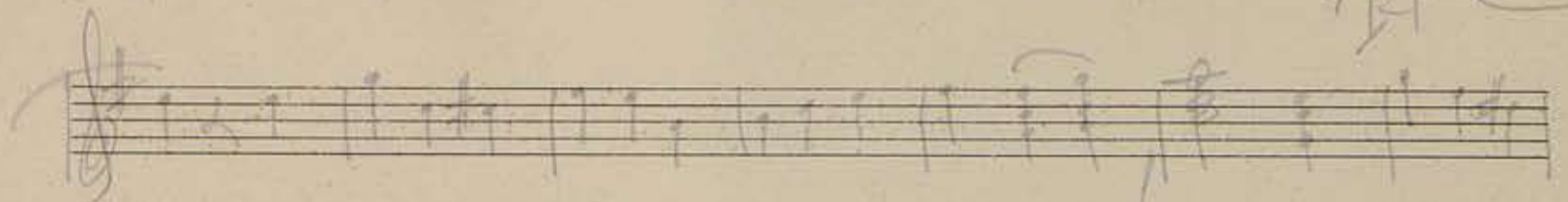
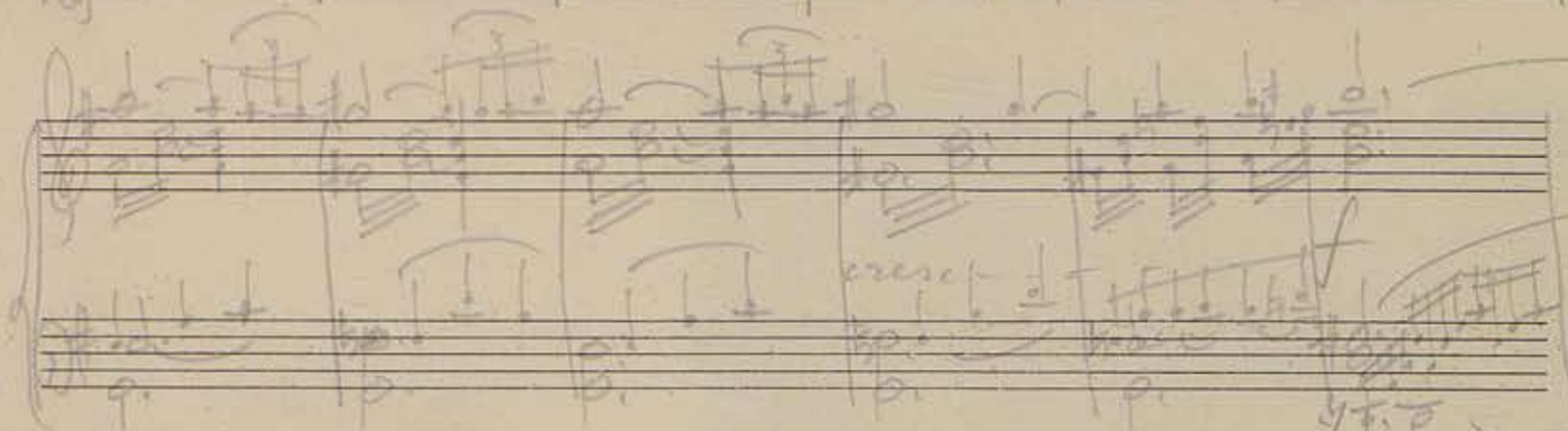
Handwritten musical score, seventh system. It consists of two staves. The top staff is in treble clef and the bottom staff is in bass clef. The music features complex rhythmic patterns and melodic lines.

Handwritten musical score, first system. It consists of three staves. The top staff is a single melodic line. The middle and bottom staves are a grand staff. The music includes various notes, rests, and dynamic markings such as *p.* and *pp.*. There are also some handwritten annotations above the notes.

Handwritten musical score, second system. It consists of three staves. The top staff is a single melodic line. The middle and bottom staves are a grand staff. The music includes various notes, rests, and dynamic markings such as *p.*, *pp.*, and *f*. There are also some handwritten annotations above the notes.

Handwritten musical score, third system. It consists of three staves. The top staff is a single melodic line. The middle and bottom staves are a grand staff. The music includes various notes, rests, and dynamic markings such as *p.*, *pp.*, and *f*. There are also some handwritten annotations above the notes.

Handwritten musical score, fourth system. It consists of three staves. The top staff is a single melodic line. The middle and bottom staves are a grand staff. The music includes various notes, rests, and dynamic markings such as *p.*, *pp.*, and *f*. There are also some handwritten annotations above the notes.



*choro*

*passage*

Handwritten musical notation on a single staff, featuring a treble clef and a key signature of one sharp (F#). The notation includes various note values, rests, and dynamic markings such as *pp.* and *ppp.*.

Handwritten musical notation on a grand staff (treble and bass clefs). The right hand contains melodic lines with slurs and ties, while the left hand features complex chordal textures and arpeggiated figures. Dynamic markings include *pp.* and *ppp.*.

Handwritten musical notation on a single staff, continuing the melodic line from the previous system. It includes slurs and various note values.

Handwritten musical notation on a grand staff. The right hand has a complex melodic passage with slurs and ties, and the left hand has dense chordal accompaniment. Dynamic markings include *pp.* and *ppp.*.

Handwritten musical notation on a single staff, showing a continuation of the melodic material with various note values and rests.

Handwritten musical notation on a grand staff. The right hand features a melodic line with slurs and ties, and the left hand has a complex accompaniment. A *Ped.* (pedal) marking is present in the left hand. Dynamic markings include *pp.* and *ppp.*.

Handwritten musical notation on a single staff, continuing the melodic line with various note values and rests.

Handwritten musical notation on a grand staff. The right hand has a melodic line with slurs and ties, and the left hand has a complex accompaniment. Dynamic markings include *pp.* and *ppp.*.