

M

Αἰγιός - αἰγιός ἐσθ' ὀνομαστός. - Αρ. Διονύσιος 3256

Ν. ΣΠΑΡΤΩΤΗΣ  
Α. ΚΟΥΚΟΥΡΑΣ  
Α. ΜΑΡΙΣ

Τραγούδι γ' ἱστῆς ἱερῆς Ἀγαθῆς  
Χανιά (Κρήνη).

Τραγούδι

Πίπτα  
Ἀγαθῆς

8va

Αἰ - γιός, αἰ - γιός, ἡν - ἰός, αἰ - γιός, αἰ - γιός, αἰ - γιός

8va

ὀ - νο - μασ - τός, ἑ, ἡν ἰός, ἡν ἰός, ἡν ἰός

N. SPARTOY  
ADRIAN

8va

ἡν ἰός, ἡν ἰός, ἡν ἰός, ἡν ἰός, ἡν ἰός

*g* *vo*  
si - pi - ja, va - pu va, va

*g* *vo*  
va - pu - va - pu - va - pu

*g* *vo*  
va - pu - va - pu - va - pu

*g* *vo*  
va - pu - va, va - pu - va - pu - va - pu - va



Handwritten musical notation on a single staff, featuring a treble clef and a key signature of one flat. The lyrics are: *802* *ev. Cor - vo - per - hinc - in - sup - gi*

Piano accompaniment for the first system, showing the right and left hands with various chords and melodic lines.

Handwritten musical notation on a single staff, featuring a treble clef and a key signature of one flat. The lyrics are: *802* *ev. Cor - vo - per - hinc - in - sup - gi - cor - Na - end - per*

Piano accompaniment for the second system, showing the right and left hands with various chords and melodic lines.

Handwritten musical notation on a single staff, featuring a treble clef and a key signature of one flat. The lyrics are: *802* *ev. Cor - vo - per - hinc - in - sup - gi - cor - Na - end - per*

Piano accompaniment for the third system, showing the right and left hands with various chords and melodic lines.

Handwritten musical notation on a single staff, featuring a treble clef and a key signature of one flat. The lyrics are: *802* *ev. Cor - vo - per - hinc - in - sup - gi - cor - Na - end - per*

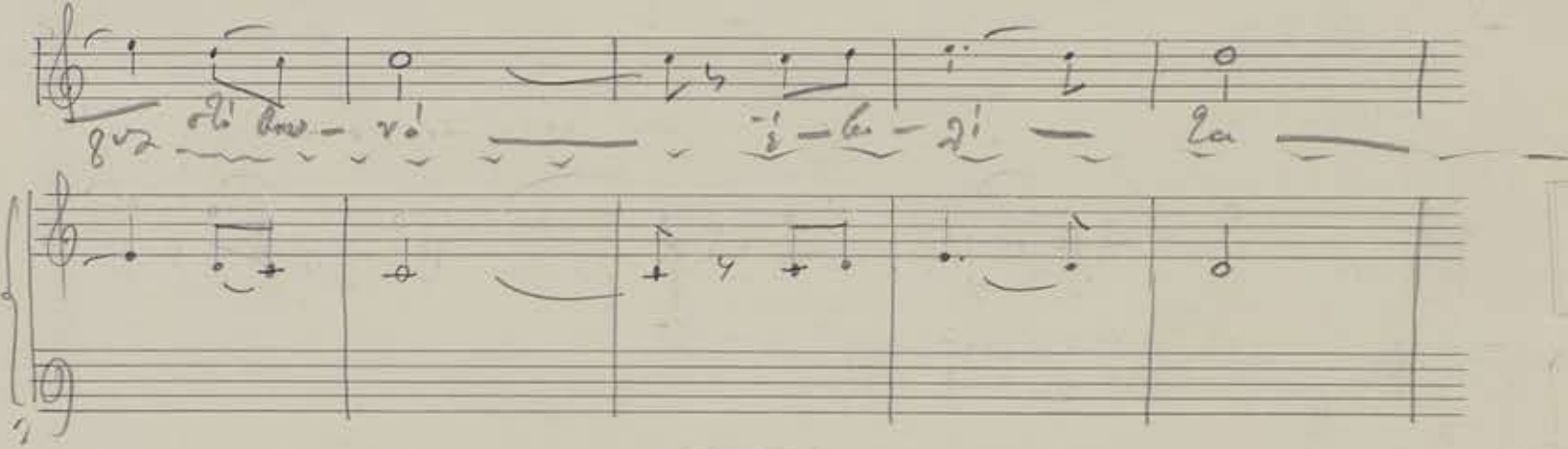
Piano accompaniment for the fourth system, showing the right and left hands with various chords and melodic lines.

Two sets of empty musical staves at the bottom of the page, one for the right hand and one for the left hand.

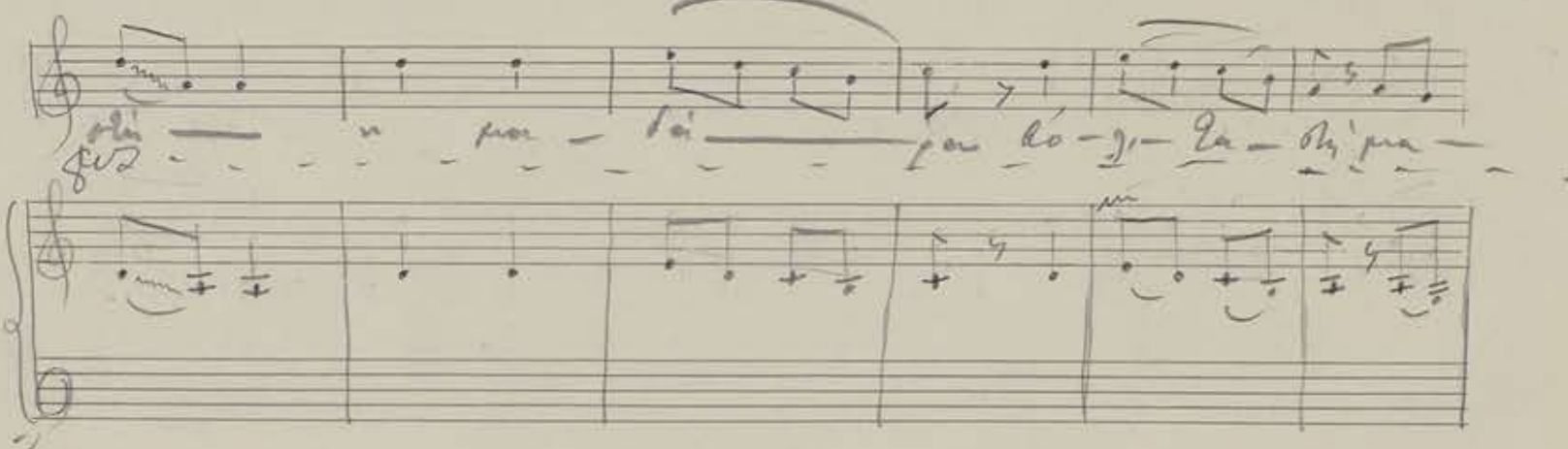
8va - *Vois* - *ans* - *sur* - *ni* - *ra* - *moi* - *sur* - *ni* - *ra* -



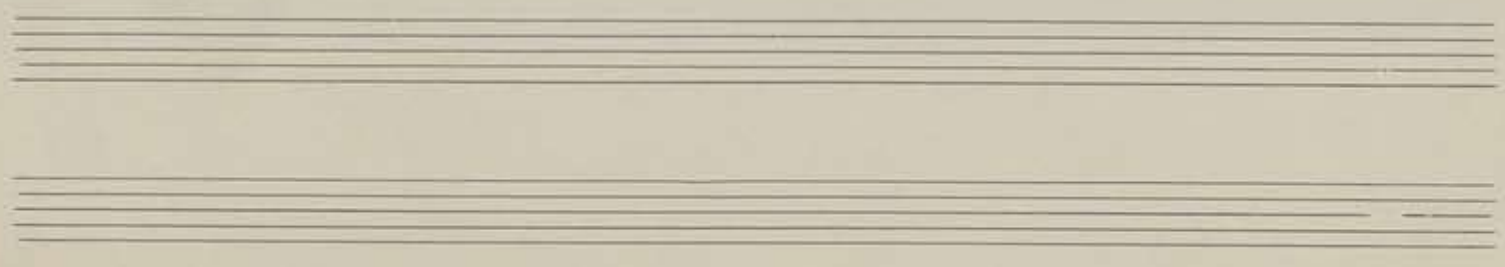
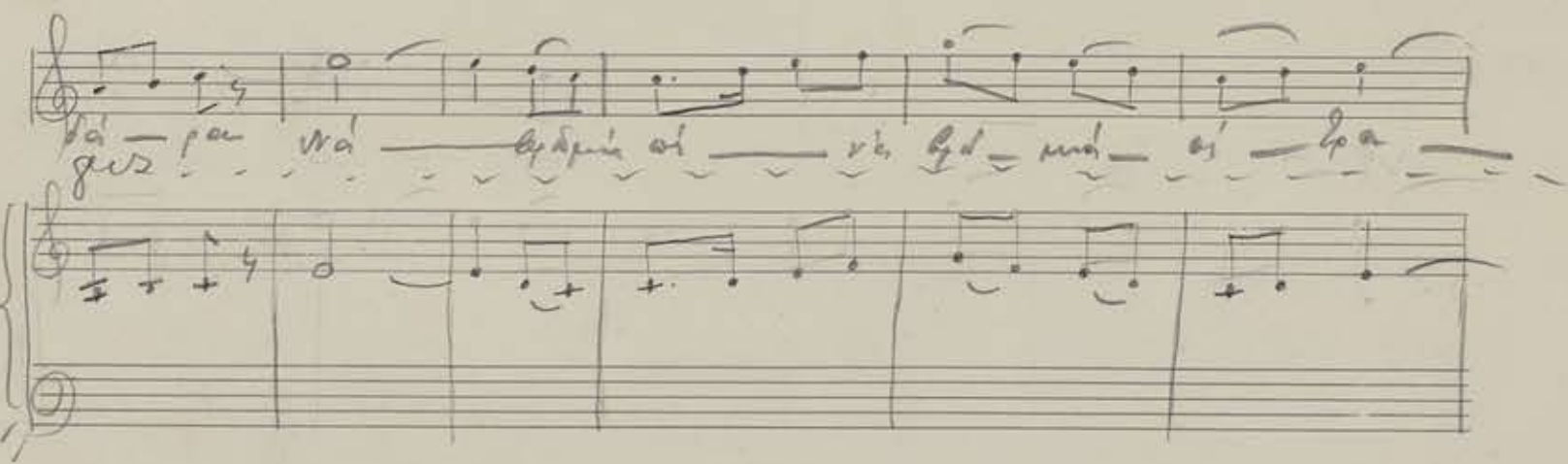
8va *oh* - *lors* - *ra* - *si* - *la* - *si* - *la* -



8va *oh* - *sur* - *la* - *sur* - *lo* - *si* - *la* - *si* - *la* -



8va *si* - *sur* - *ni* - *ra* - *si* - *la* - *si* - *la* -





Handwritten musical notation for the first system, including a vocal line and a piano accompaniment. The lyrics "pi-fo - ma" are written under the vocal line.

Handwritten musical notation for the second system, including a vocal line and a piano accompaniment. The lyrics "Ma' opat ma' ai - va" are written under the vocal line.

Handwritten musical notation for the third system, including a vocal line and a piano accompaniment. The lyrics "Opat ma' ai - opau - pi-fo - ma" are written under the vocal line.

Handwritten musical notation for the fourth system, including a vocal line and a piano accompaniment. The lyrics "di - opu - ai - va - ma" are written under the vocal line.

Two sets of empty musical staves at the bottom of the page.

Handwritten musical notation on a single staff with lyrics: *Low va li - ag - a - de va' ma - low. Na' - mi - sa -*

Handwritten musical notation on a grand staff (treble and bass clefs) corresponding to the first system of lyrics.

Handwritten musical notation on a single staff with lyrics: *je - va - mi - sa - je - pa - mi - sa - va' .*

Handwritten musical notation on a grand staff (treble and bass clefs) corresponding to the second system of lyrics.

Handwritten musical notation on a single staff, mostly blank with some faint markings.

Handwritten musical notation on a grand staff (treble and bass clefs) with a dashed line above the treble clef staff and some markings.

Handwritten musical notation on a single staff with lyrics: *Na' - mi - sa - je - va' - mi - sa - je - pa -*

Handwritten musical notation on a grand staff (treble and bass clefs) corresponding to the third system of lyrics.

Empty musical staff lines.

Empty musical staff lines.



Handwritten musical notation on a single staff with lyrics: *me qu - re - re, me qu - re - re*

Handwritten musical notation on a grand staff (treble and bass clefs).

Handwritten musical notation on a single staff with lyrics: *ra - a - ja - ja, me qu - re - re*

Handwritten musical notation on a grand staff.

Handwritten musical notation on a single staff with lyrics: *ra - ga - ga - ga, ra - ga - ga - ga*

Handwritten musical notation on a grand staff.

Handwritten musical notation on a single staff with lyrics: *ra - ga - ga - ga, ra - ga - ga - ga*

Handwritten musical notation on a grand staff.

Empty musical staff.

Empty musical staff.





Handwritten musical notation for the first system, featuring a vocal line and a piano accompaniment. The lyrics are: *gua - vi, Kia al li - ca - mi - oi Za'*

Handwritten musical notation for the second system, featuring a vocal line and a piano accompaniment. The lyrics are: *ca - su - pa - na.* The system concludes with a *Fine* marking.

ST. CATHARINE  
ACADEMY

Seven sets of empty musical staves, each consisting of a treble clef staff and a bass clef staff, provided for further notation.